

ELECTRICAL LOAD FOR INTERSECTION				
STREET NAME	COMPONENT	NUMBER	WATTAGE EACH	BURNTIME %
US 30	RED	6	11	50
	YELLOW	6	22	25
	GREEN	6	15	25
	(R) (Y) (G)	8	20	100
ELM STREET	RED	6	11	50
	YELLOW	6	22	25
	GREEN	6	15	25
	GREEN ARROW LT.	2	11	10
TRAFFIC SIGNAL CABINET	(R) (Y) (G)	4	20	100
	CONTROLLER	1	6	100
	UPS	1	50	100

AGENCY RESPONSIBLE FOR TRAFFIC SIGNAL ENERGY CHARGES:  
VILLAGE OF WATERMAN

THERE MAY BE ADDITIONAL ENERGY CHARGES DUE TO LIGHTING, ILLUMINATED SIGNS, OR EMERGENCY VEHICLE DETECTION EQUIPMENT.

### TRAFFIC SIGNALS LEGEND

	DENOTES NUMBER OF EXISTING CONDUCTORS
	DENOTES NUMBER OF PROPOSED CONDUCTORS
	EXISTING CONTROLLER AND CABINET
	EXISTING RAILROAD CONTROLLER
	EXISTING HANDHOLE
	EXISTING DOUBLE HANDHOLE
	EXISTING SERVICE INSTALLATION
	EXISTING TRAFFIC SIGNAL POST
	PROPOSED TRAFFIC SIGNAL POST
	EXISTING SIGNAL SECTION 12"
	EXISTING ILLUMINATED SIGN, LED
	EXISTING PEDESTRIAN PUSH BUTTON
	EXISTING WALK/DON'T WALK WITH COUNT DOWN TIMER
	EXISTING TRAFFIC SIGNAL BACKPLATE
	PROPOSED PEDESTRIAN PUSH BUTTON
	PROPOSED WALK/DON'T WALK WITH COUNT DOWN TIMER
	EXISTING CONDUIT
	GROUND CABLE IN CONDUIT, NO. 6 SOLID COPPER (GREEN)
	GROUND ROD AT MAST ARM (MA) OR HANDHOLE (H) OR CONTROLLER (C) OR SERVICE INSTALLATION (S)

### CONSTRUCTION NOTES:

REMOVAL OF THE FOLLOWING ITEMS SHALL BE PAID FOR AS REMOVE EXISTING TRAFFIC SIGNAL EQUIPMENT:  
1 EACH - TRAFFIC SIGNAL POST, 10 FT.  
1 EACH - TRAFFIC SIGNAL POST, 12 FT.

HOLES IN TRAFFIC SIGNAL POSTS OR MAST ARM POLES RESULTING FROM REMOVAL OF SIGNAL HEADS SHALL BE COVERED WITH STAINLESS STEEL PLATES AND MOUNTING HARDWARE. THIS WORK SHALL BE CONSIDERED INCLUDED IN THE COST OF REMOVE EXISTING TRAFFIC SIGNAL EQUIPMENT.

REMOVE AND REPLACE ONE (1) 10 FT. TRAFFIC SIGNAL POST IN THE NORTHEAST ISLAND WITH A 13 FT. TRAFFIC SIGNAL POST.

REMOVE AND REPLACE ONE (1) 12 FT. TRAFFIC SIGNAL POST IN THE SOUTHWEST ISLAND WITH A 15 FT. TRAFFIC SIGNAL POST.

REMOVE AND RE-ERECT THE FOLLOWING SIGNS AS DIRECTED BY THE ENGINEER TO ALLOW PLACEMENT OF NEW TRAFFIC SIGNAL EQUIPMENT:



AT NORTHEAST AND SOUTHWEST ISLAND TRAFFIC SIGNAL POSTS



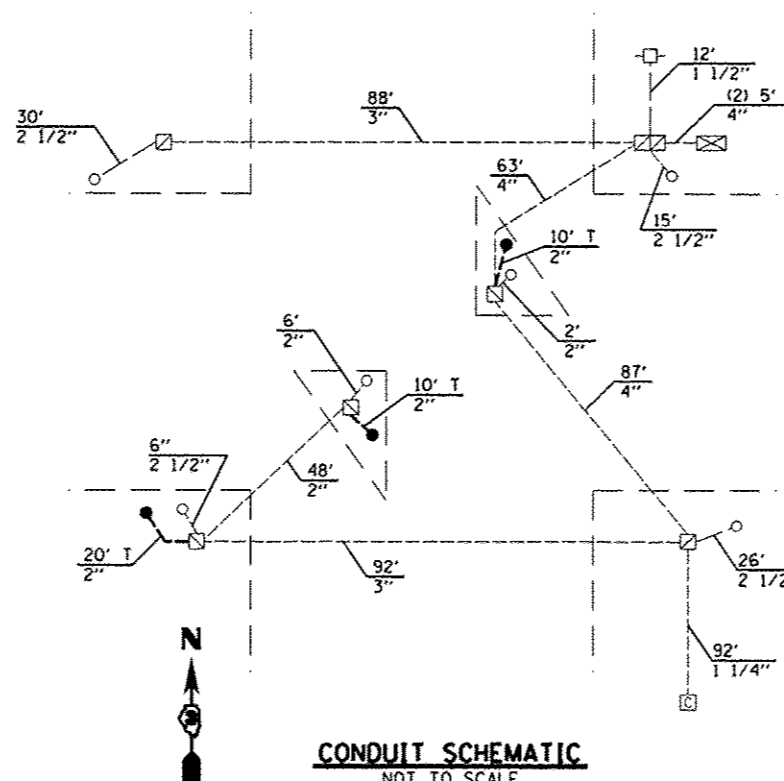
AT SOUTHWEST QUADRANT MAST ARM POLE

THE TRAFFIC SIGNAL SYSTEM SHALL BE SET TO ALL FLASHING RED IF ANY PART OF THE SIGNAL SYSTEM IS NOT OPERATIONAL OVER NIGHT.

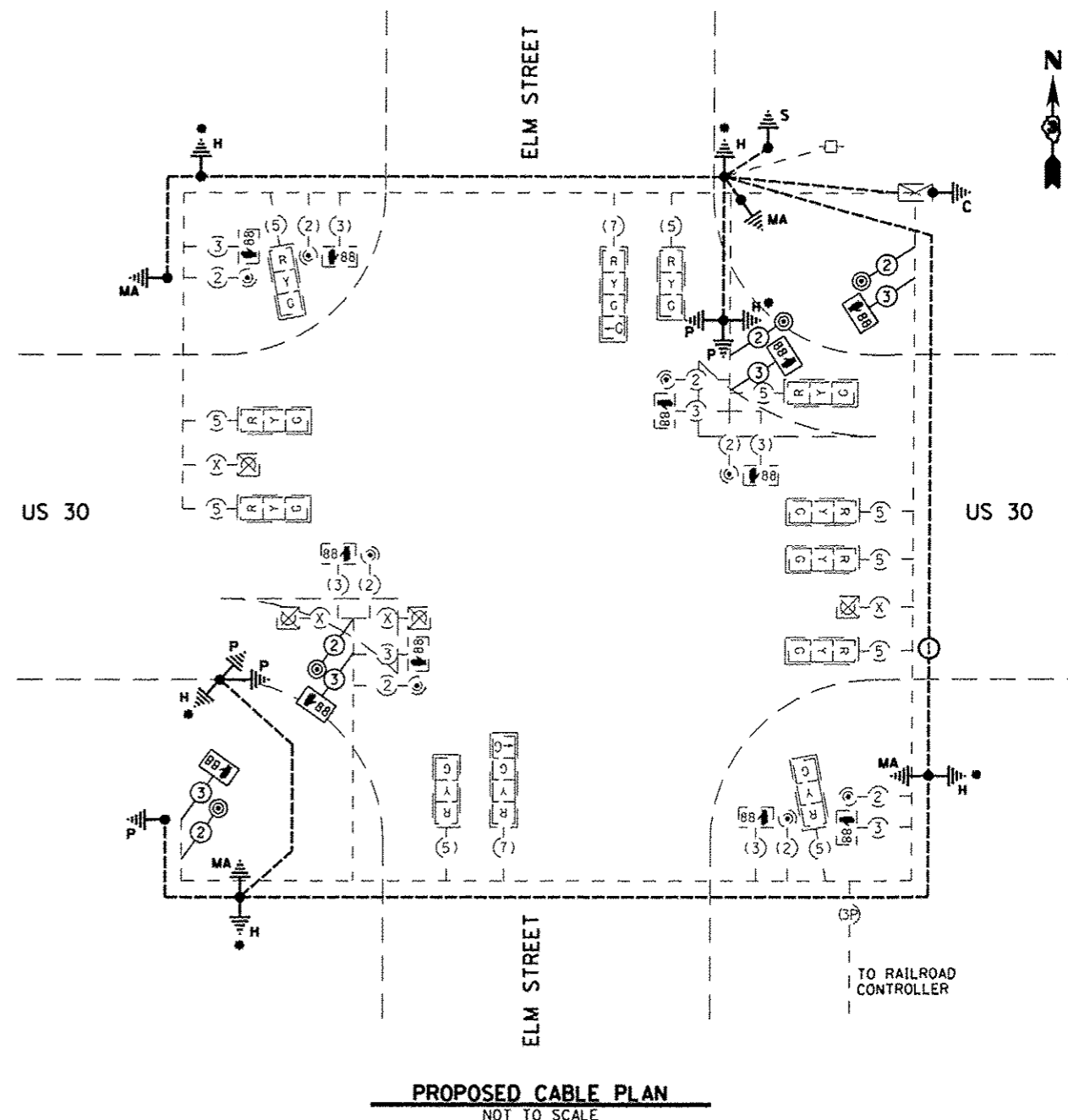
RELOCATE TWO (2) ILLUMINATED SIGNS AT THE SOUTHWEST ISLAND FROM THE EXISTING 12 FT. TRAFFIC SIGNAL POST TO THE NEW 15 FT. TRAFFIC SIGNAL POST.

RELOCATE TWO (2) PEDESTRIAN SIGNAL HEADS AND PUSH BUTTONS FROM THE EXISTING 12 FT. TRAFFIC SIGNAL POST TO THE NEW 15 FT. TRAFFIC SIGNAL POST.

RELOCATE TWO (2) PEDESTRIAN SIGNAL HEADS AND PUSH BUTTONS FROM THE EXISTING 10 FT. TRAFFIC SIGNAL POST TO THE NEW 13 FT. TRAFFIC SIGNAL POST.

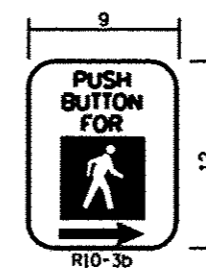


CONDUIT SCHEMATIC  
NOT TO SCALE

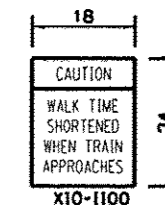


PROPOSED CABLE PLAN  
NOT TO SCALE

• DENOTES GROUND EXISTING HANDHOLE, SEE MISCELLANEOUS DETAILS



THE CONTRACTOR SHALL SUPPLY AND MOUNT ONE SIGN WITH EACH PEDESTRIAN PUSH-BUTTON AND THIS SHALL BE INCLUDED IN THE COST OF PEDESTRIAN SIGNAL HEAD PAY ITEM.



THE CONTRACTOR SHALL SUPPLY AND MOUNT ONE SIGN AT THE SOUTHWEST QUADRANT AND NORTHEAST QUADRANT MAST ARM POLES AND THIS SHALL BE INCLUDED IN THE COST OF THE PEDESTRIAN SIGNAL HEAD PAY ITEM.

FILE NAME : 0366C67-SHT-TS-C-W-US38-ELMST.DGN

USER NAME : --  
PLOT SCALE : 1" = 20'  
PLOT DATE : 03/13

DESIGNED : --  
DRAWN : ARR/NV  
CHECKED : PM  
DATE : 03/13

REVISED : ---  
REVISED : ---  
REVISED : ---  
REVISED : ---

STATE OF ILLINOIS  
DEPARTMENT OF TRANSPORTATION

TRAFFIC SIGNAL CABLE PLAN  
WATERMAN - US 30 & ELM STREET  
SCALE: 1" = 20' SHEET NO. \_\_\_ OF \_\_\_ SHEETS STA. \_\_\_\_\_ TO STA. \_\_\_\_\_

\* DEKALB, GRUNDY, KANKAKEE & LASALLE  
F.A. RTE. SECTION COUNTY TOTAL SHEET NO.  
D-3 LED RETROFIT 2013-1 38 35  
CONTRACT NO. 66C67  
ILLINOIS FED. AID PROJECT