

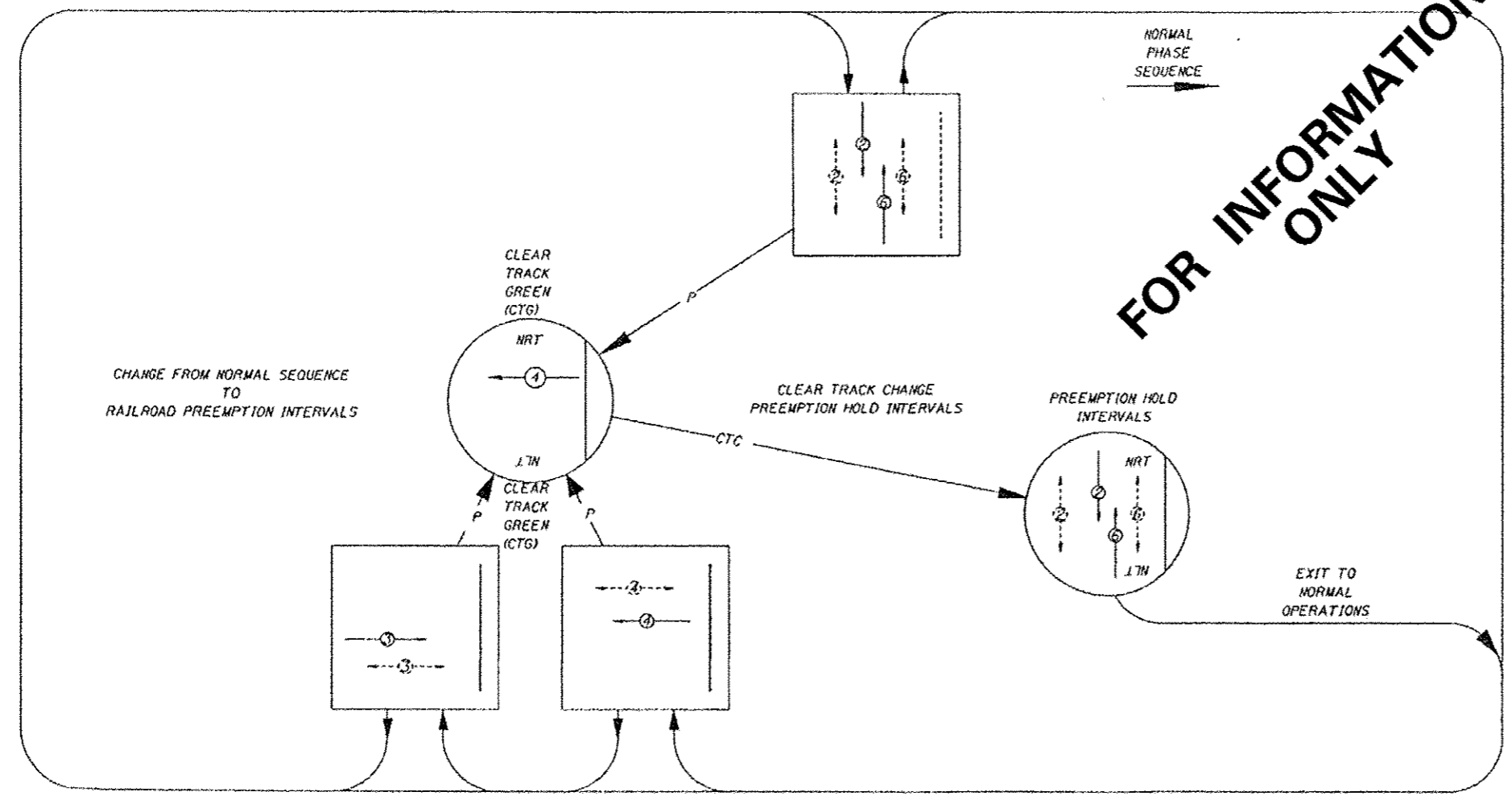
F.A.P. RTE.	SECTION	COUNTY	TOTAL SHEETS	SHEET NO.
573	116R-3	DEKALB	271	103
STA.	TO STA.			
PROJECT DESIGN NO.	ILLINOIS FED. AID PROJECT			

SHEET 4 OF 5

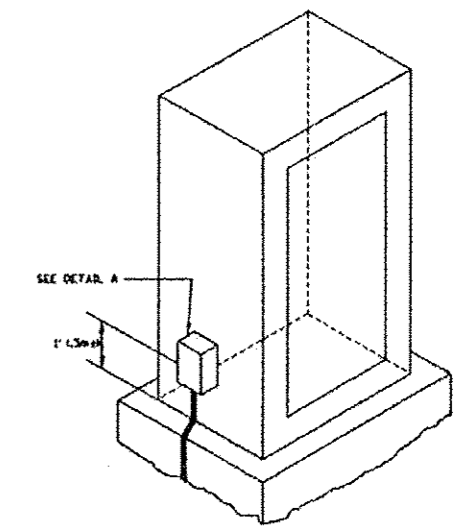
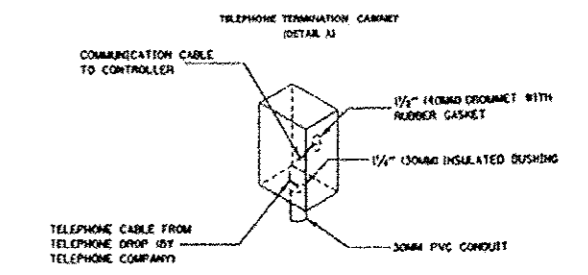
RAILROAD GRADE CROSSING PREEMPTION

SIGNAL PHASE	RIGHT-OF-WAY CHANGE INTERVAL									TRACK CLEAR INTERVAL			PREEMPTION HOLD INTERVAL	EXIT PHASES TO NORMAL OPERATION
	2+5	CL	CLH	4	CL	CLH	3	CL	CLH	G	Y	R		
PHASE G TO RR CLEARANCE	G	Y	R	G	Y	R	G	Y	R	G	Y	R	PREEMPTION HOLD INTERVAL	EXIT PHASES TO NORMAL OPERATION
2	R	R	R	R	R	R	R	R	R	R	R			
4	R	R	R	R	R	R	R	R	R	R	R			
6	R	R	R	R	R	R	R	R	R	R	R			
3	R	R	R	R	R	R	R	R	R	R	R			
1	R	R	R	R	R	R	R	R	R	R	R			
PEDESTRIAN	W	FL DW	DW	DW	FL DW	DW	DW	DW	DW	DW	DW	PREEMPTION HOLD INTERVAL	EXIT PHASES TO NORMAL OPERATION	
2	DW	DW	DW	DW	DW	DW	DW	DW	DW	DW	DW			
4	DW	DW	DW	DW	DW	DW	DW	DW	DW	DW	DW			
6	DW	DW	DW	DW	DW	DW	DW	DW	DW	DW	DW			
3	DW	DW	DW	DW	DW	DW	DW	DW	DW	DW	DW			
1	DW	DW	DW	DW	DW	DW	DW	DW	DW	DW	DW			
BLANK OUT SIGNS	OFF	ON	ON	OFF	ON	ON	OFF	ON	ON	ON	ON	PREEMPTION HOLD INTERVAL	EXIT PHASES TO NORMAL OPERATION	
NO LEFT TURN	OFF	ON	ON	OFF	ON	ON	OFF	ON	ON	ON	ON			
NO RIGHT TURN	OFF	ON	ON	OFF	ON	ON	OFF	ON	ON	ON	ON			

GRAPHIC PREEMPTION SEQUENCE
OUTER LOOP REPRESENTS AN 8-PHASE, FULL-ACTUATED, DUAL ENTRY TRAFFIC SIGNAL OPERATION



FOR INFORMATION ONLY



REVISIONS		ILLINOIS DEPARTMENT OF TRANSPORTATION
NAME	DATE	
L.HILL	8/25/02	DRAWN BY L.D.HILL CHECKED BY K.K.MOSON
L.HILL	9/4/02	
L.HILL	9/5/02	

SCALE: VERT. DATE 8/21/02
 HORIZ. DATE 8/21/02

RAILROAD GRADE CROSSING PREEMPTION SEQUENCE AND CABINET DETAIL

SIGNAL PLANS