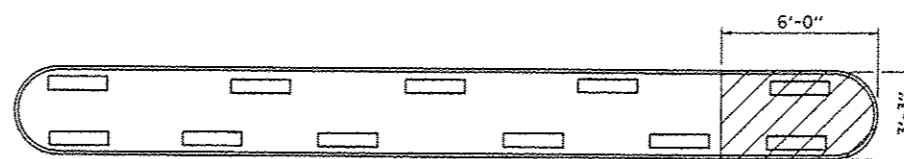
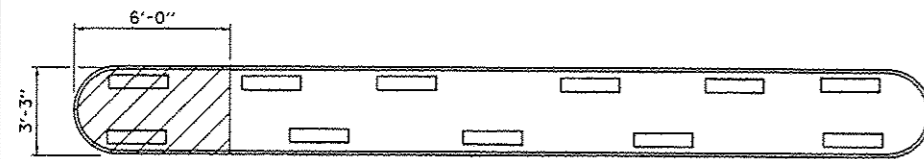


PIER 1 BEAM REACTION TABLE

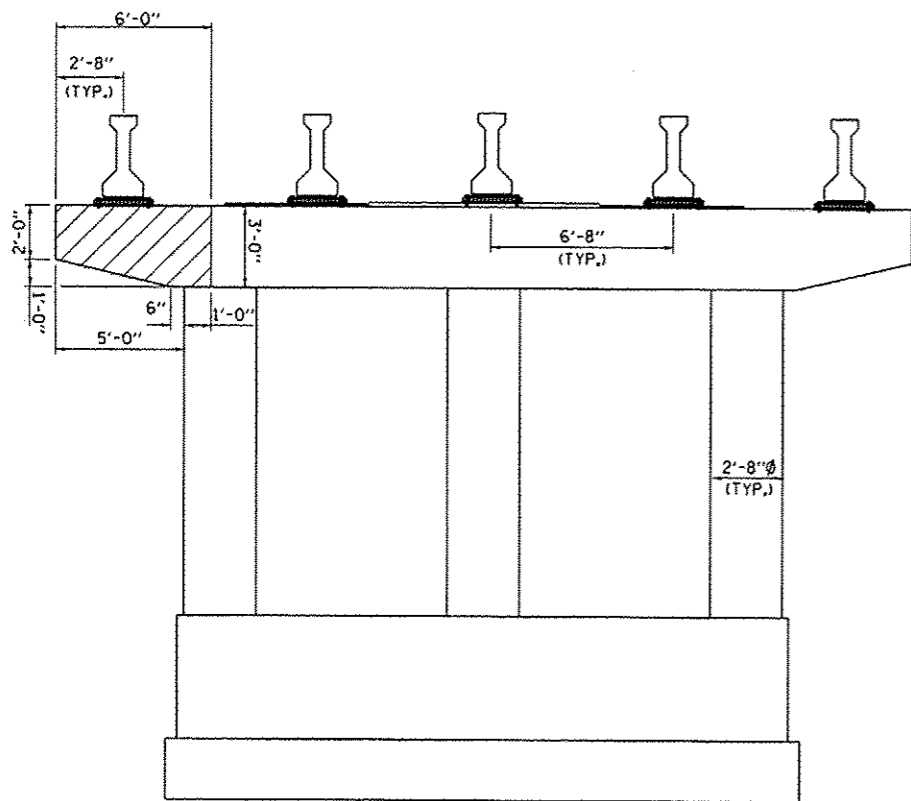
		SPAN 1	SPAN 2
R_{ϕ}	(K)	27.4	35.6
R_L	(K)	27.3	29.1
Imp.	(K)	8.0	8.0
R (Total)	(K)	62.7	72.7

NOTES:

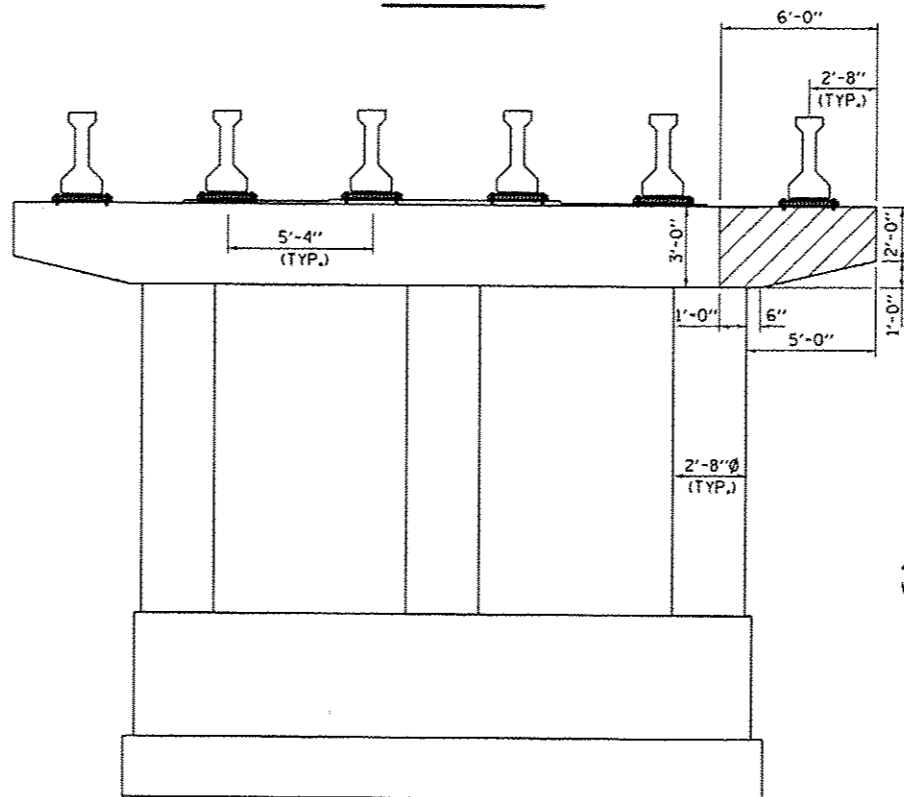
1. TEMPORARY BEAM SUPPORTS SHALL BE FURNISHED AND INSTALLED PRIOR TO BEGINNING CONCRETE REMOVAL OPERATIONS.
2. THE CONTRACTOR SHALL EXERCISE EXTREME CARE DURING CONCRETE REMOVAL OPERATIONS SO THE PPC-I BEAMS ARE NOT DAMAGED. IF THE EXISTING BEAMS ARE DAMAGED DUE TO THE CONTRACTOR'S CONCRETE REMOVAL OPERATIONS, THE CONTRACTOR SHALL REPAIR THE BEAMS TO THE SATISFACTION OF THE ENGINEER AT THE CONTRACTOR'S EXPENSE.
3. REMOVE EXISTING BEARINGS AND REPLACE WITH NEW ELASTOMERIC BEARING ASSEMBLY, TYPE II (SPECIAL) AS DETAILED ON SHEET 10 OF 24.
4. ALL STRUCTURAL STEEL SHALL CONFORM TO AASHTO CLASSIFICATION M-270 GR. 36, UNLESS OTHERWISE NOTED



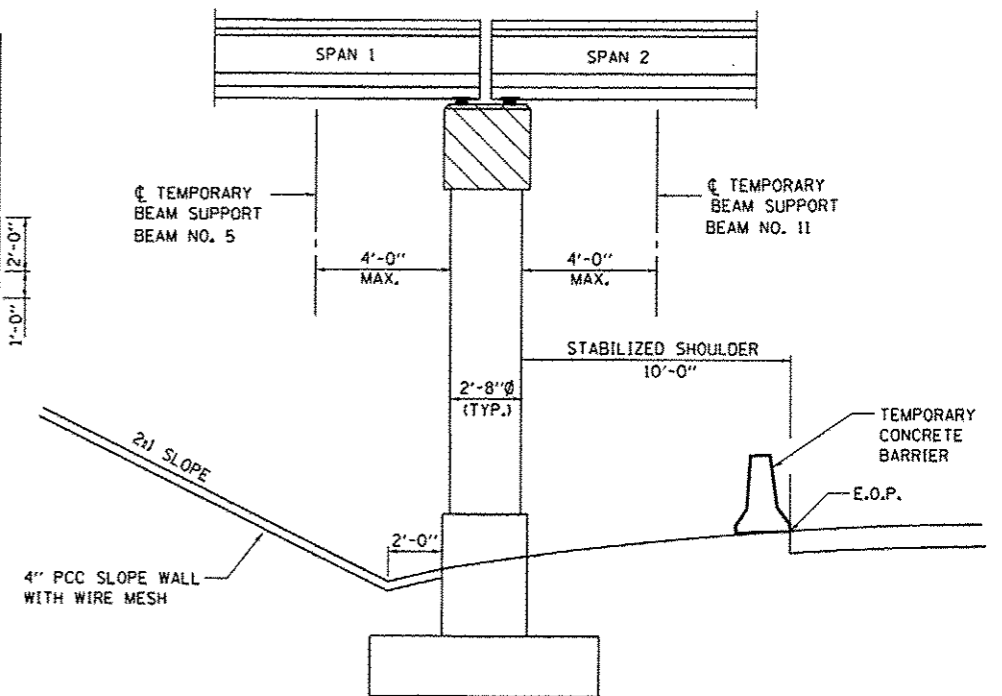
TOP PLAN



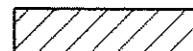
**NORTH FACE
PIER 1**



**SOUTH FACE
PIER 1**



**EAST END ELEVATION
PIER 1**



CONCRETE REMOVAL LIMITS

BILL OF MATERIAL

ITEM	UNIT	QUANTITY
Temporary Shoring and Cribbing	Each.	2

FILE NAME =	USER NAME = patel.yj	DESIGNED - YOGESH PATEL	REVISED -
ch:\pv\work\pav\patel.yj\0320332\0366	71-shit-details.dgn	DRAWN - YOGESH PATEL	REVISED -
	PLOT SCALE = 99.7550 1/1 in.	CHECKED - RON WOODSHANK	REVISED -
	PLOT DATE = 4/3/2013	DATE -	REVISED -

**STATE OF ILLINOIS
DEPARTMENT OF TRANSPORTATION**

**PIER 1 REPAIR DETAILS
SN: 050-0132**

F.A.I. RTE.	SECTION	COUNTY	TOTAL SHEETS	SHEET NO.
80	03 PIER CAP REPAIR 2014-1	LASALLE	25	9
			CONTRACT NO. 66C71	
ILLINOIS				

SCALE: SHEET NO. 2 OF 8 SHEETS STA. TO STA.