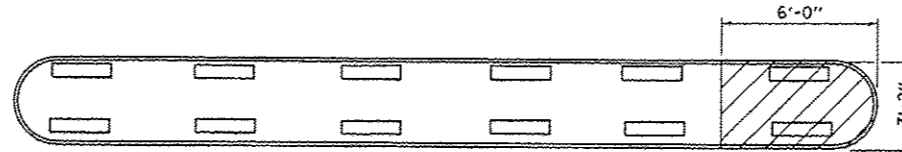
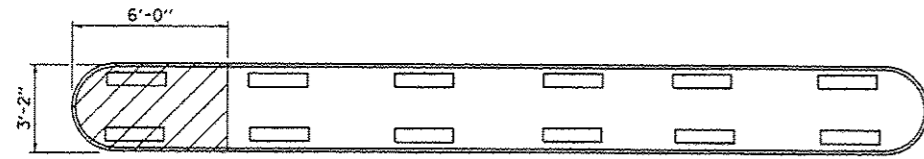
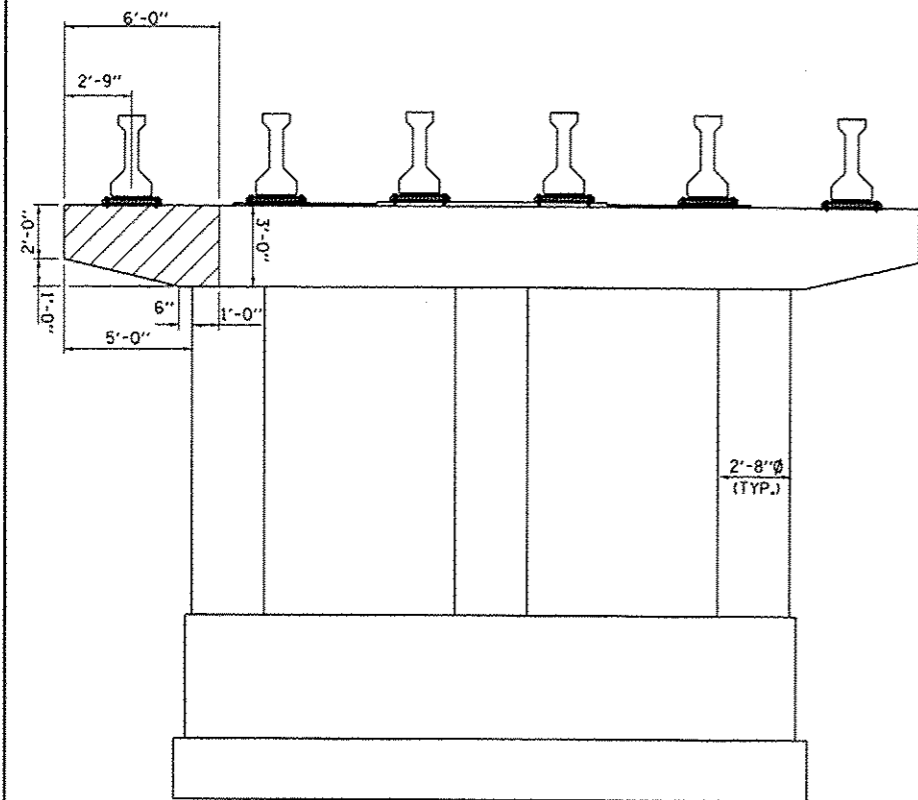


PIER 2 BEAM REACTION TABLE

		SPAN 2	SPAN 3
R_{ϕ}	(K)	35.6	35.6
R_{\perp}	(K)	29.1	29.1
Imp.	(K)	8.0	8.0
R (Total)	(K)	72.7	72.7

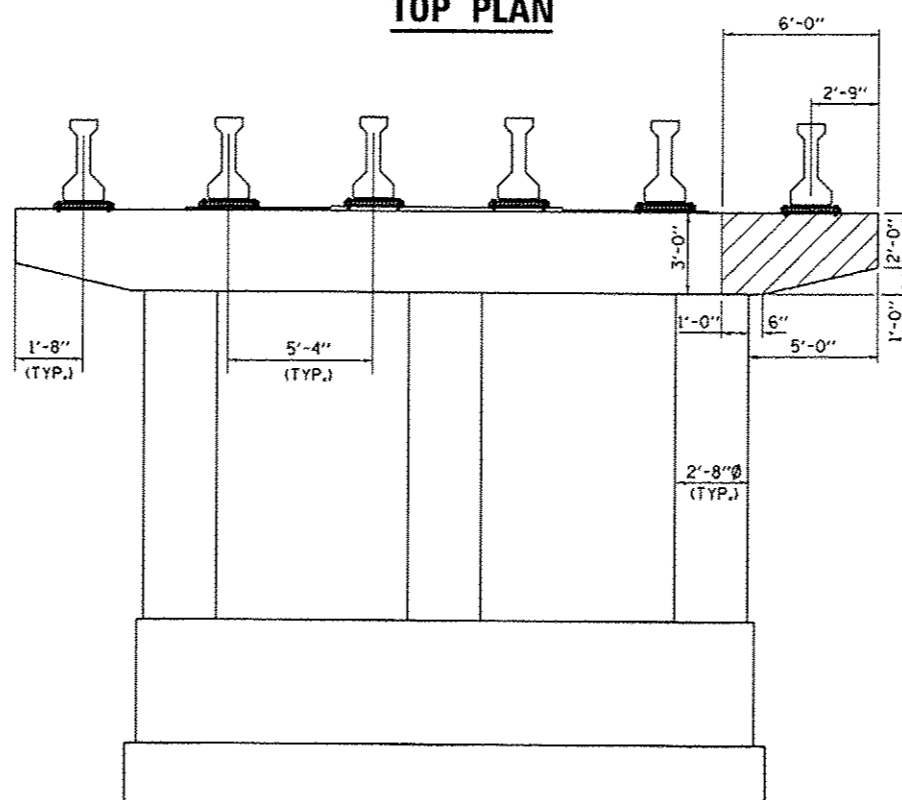


TOP PLAN



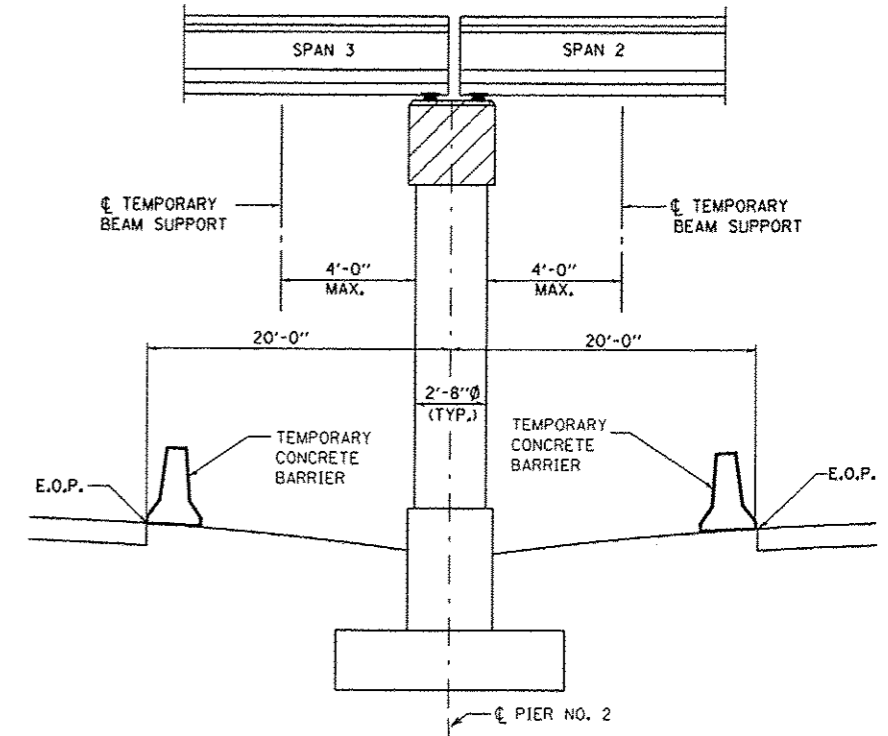
PIER2-CENTER PIER
LOOKING SOUTH

NORTH FACE



PIER2-CENTER PIER
LOOKING NORTH

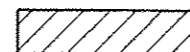
SOUTH FACE



PIER2-CENTER PIER
LOOKING WEST

NOTES:

1. TEMPORARY BEAM SUPPORTS SHALL BE FURNISHED AND INSTALLED PRIOR TO BEGINNING CONCRETE REMOVAL OPERATIONS.
2. THE CONTRACTOR SHALL EXERCISE EXTREME CARE DURING CONCRETE REMOVAL OPERATIONS SO THE PPC-1 BEAMS ARE NOT DAMAGED. IF THE EXISTING BEAMS ARE DAMAGED DUE TO THE CONTRACTOR'S CONCRETE REMOVAL OPERATIONS, THE CONTRACTOR SHALL REPAIR THE BEAMS TO THE SATISFACTION OF THE ENGINEER AT THE CONTRACTOR'S EXPENSE.
3. REMOVE EXISTING BEARINGS AND REPLACE WITH NEW FIXED BEARING AS DETAILED ON SHEET 18 OF 24 .
4. ALL STRUCTURAL STEEL SHALL CONFORM TO AASHTO CLASSIFICATION M-270 GR. 36, UNLESS OTHERWISE NOTED.



HATCHED AREA INDICATES CONCRETE REMOVAL

FILE NAME *	USER NAME = potelyj	DESIGNED - YOGESH PATEL	REVISED -	STATE OF ILLINOIS DEPARTMENT OF TRANSPORTATION	PIER 2 REPAIR DETAILS SN: 050-0133	F.A.I. RTE.	SECTION	COUNTY	TOTAL SHEETS	SHEET NO.	
c:\pwork\pvidot\potelyj\08328332\036071-shr-details.dgn		DRAWN - YOGESH PATEL	REVISED -			80	03 PIER CAP REPAIR 2014-I	LASALLE	25	18	
PLOT SCALE = 99.7550 ' / in.		CHECKED - RON WOODSHANK	REVISED -			CONTRACT NO. 66C71					
PLOT DATE = 4/3/2013		DATE -	REVISED -			ILLINOIS					

SCALE: SHEET NO. 2 OF 4 SHEETS STA. TO STA.