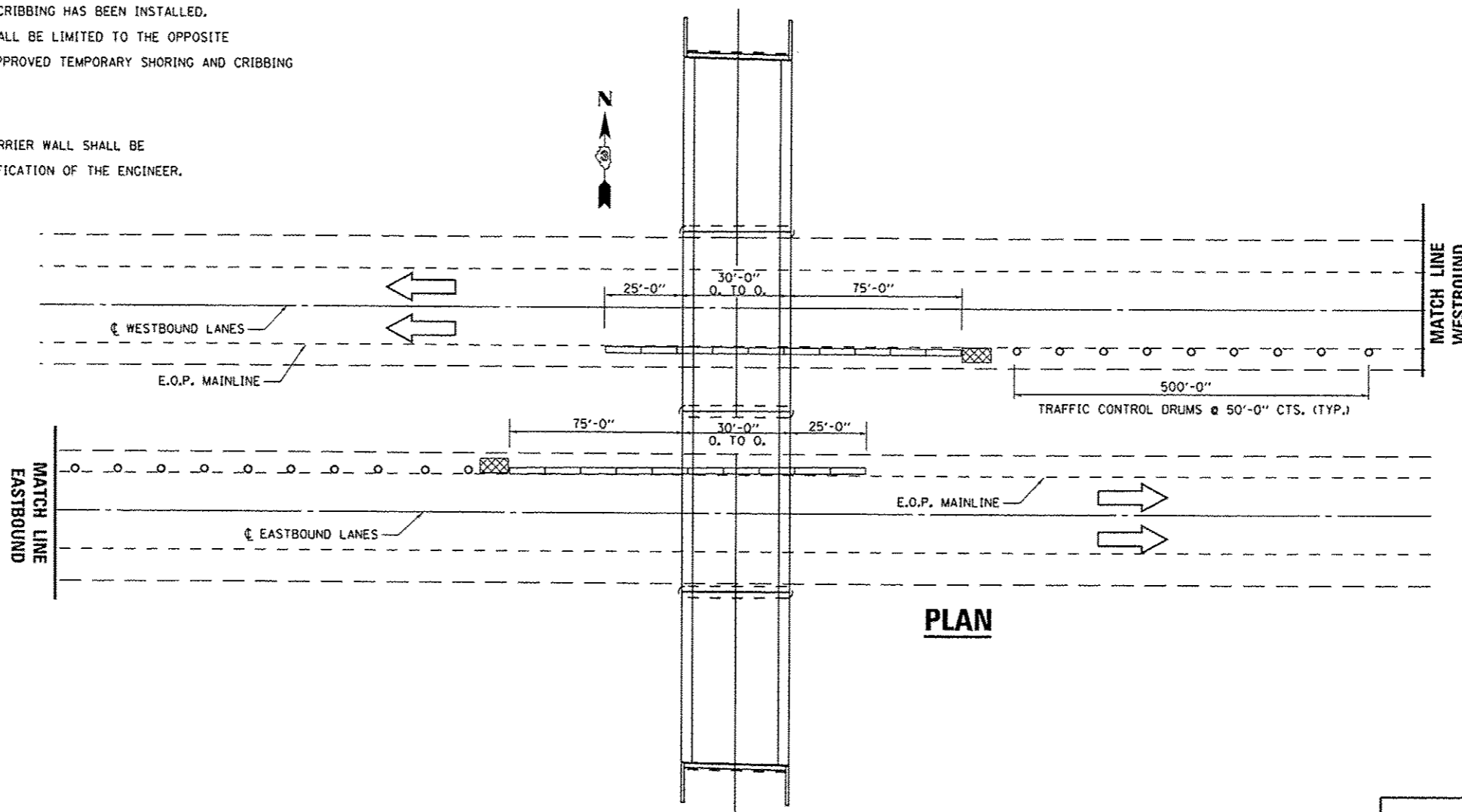


ELEVATION
LOOKING WEST

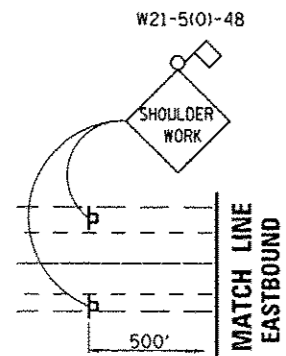
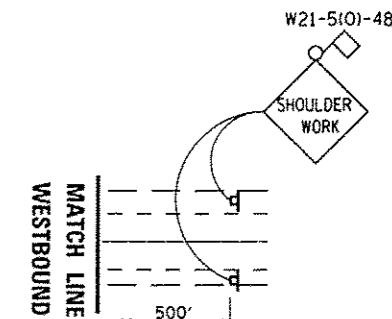
NOTES

TRAFFIC CONTROL AND PROTECTION STANDARD 701201 SHALL BE USED ON ALL OVERHEAD STRUCTURES WHEN THE CONTRACTOR IS TO JACK AND REMOVE BEARINGS, AND SHALL REMAIN IN PLACE UNTIL THE APPROVED TEMPORARY SHORING AND CRIBBING HAS BEEN INSTALLED. DURING THE JACKING PERIOD, TRAFFIC SHALL BE LIMITED TO THE OPPOSITE SIDE OF THE JACKING AREA UNTIL THE APPROVED TEMPORARY SHORING AND CRIBBING IS IN PLACE.

ALL TANGENT PORTIONS OF CONCRETE BARRIER WALL SHALL BE PINNED TO THE PAVEMENT TO THE SATISFACTION OF THE ENGINEER.



PLAN



- SYMBOLS**
- ⊢ SIGN
 - DRUM WITH STEADY BURNING LIGHT
 - ▣ IMPACT ATTENUATOR TEMP SUN TL3
 - ▬ TEMPORARY CONCRETE BARRIER

BILL OF MATERIAL

ITEM	UNIT	TOTAL
TEMPORARY CONCRETE BARRIER	FOOT	260
IMP ATTN TEMP SUN TL3	EACH	2

NOTE: SIGNS, AND SIGN PLACEMENT TO BE USED IN CONJUNCTION WITH TRAFFIC CONTROL AND PROTECTION SPECIAL.

FILE NAME =	USER NAME = patelujj	DESIGNED - YOGESH PATEL	REVISED -	STATE OF ILLINOIS DEPARTMENT OF TRANSPORTATION	TRAFFIC CONTROL DETAILS			F.A.I. RTE.	SECTION	COUNTY	TOTAL SHEETS	SHEET NO.
ci:\pw_work\pvidot\patelujj\0320132\036671-shd-details.dgn	71-shd-details.dgn	DRAWN - YOGESH PATEL	REVISED -		SN: 050-0134			80	03 PIER CAP REPAIR 2014-1	LASALLE	25	21
	PLOT SCALE = 99.7958 1/ in.	CHECKED - RON WOODSHANK	REVISED -		SCALE:	SHEET NO. 1 OF 1 SHEETS	STA.	TO STA.	CONTRACT NO. 66C71			
	PLOT DATE = 4/3/2013	DATE -	REVISED -		[ILLINOIS]							