

STATE OF ILLINOIS
DEPARTMENT OF TRANSPORTATION
DIVISION OF HIGHWAYS

**PROPOSED
HIGHWAY PLANS**

FAI ROUTE 180 (I-180)
SECTION (06)I-2

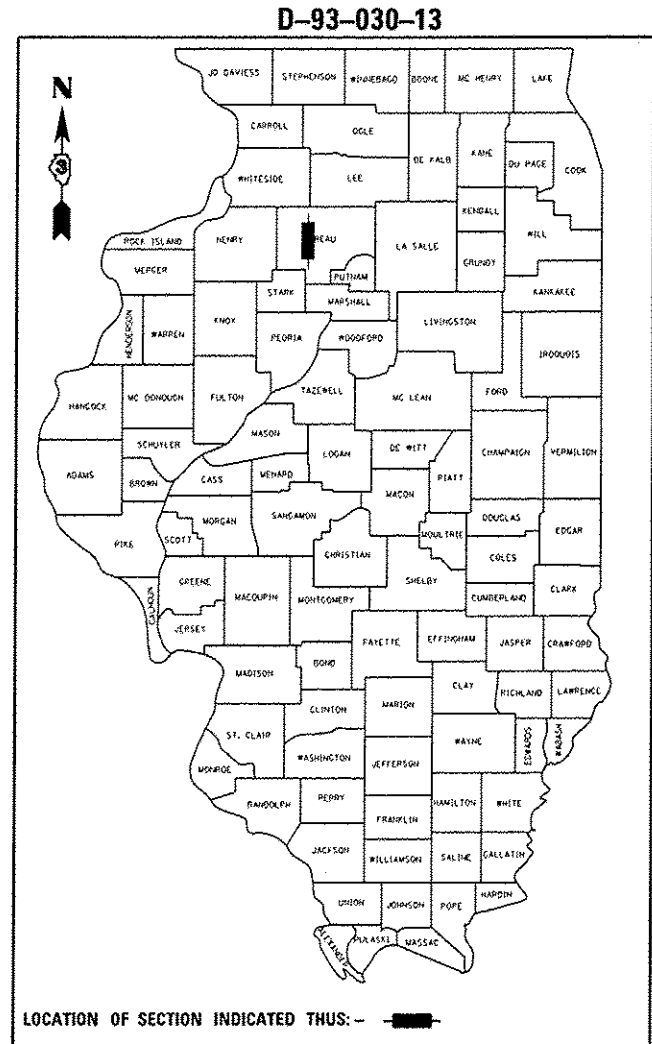
**CENTERLINE MICRO-SURFACING (JOINT REPAIR)
BUREAU COUNTY**

C-93-035-13

F.A.I. RTE.	SECTION	COUNTY	TOTAL SHEETS	SHEET NO.
180	(06)I-2	BUREAU	6	1
		ILLINOIS	CONTRACT NO. 66C72	

INDEX

- 1 COVER SHEET
- 2 GENERAL NOTES
- 3 SUMMARY OF QUANTITIES
- 4 TYPICAL SECTION
- 5 SCHEDULE OF QUANTITIES
- 6 DETAILS



DESIGN DESIGNATION: INTERSTATE

ADT 3550 (2012)

PV=82.2% SU=3.7% MU=14.1%

STATE OF ILLINOIS
DEPARTMENT OF TRANSPORTATION
DIVISION OF HIGHWAYS

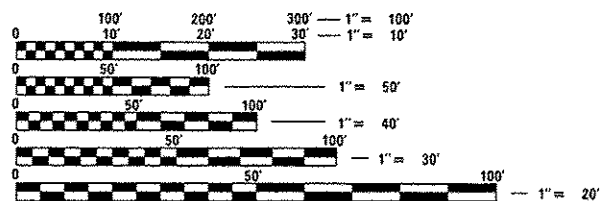
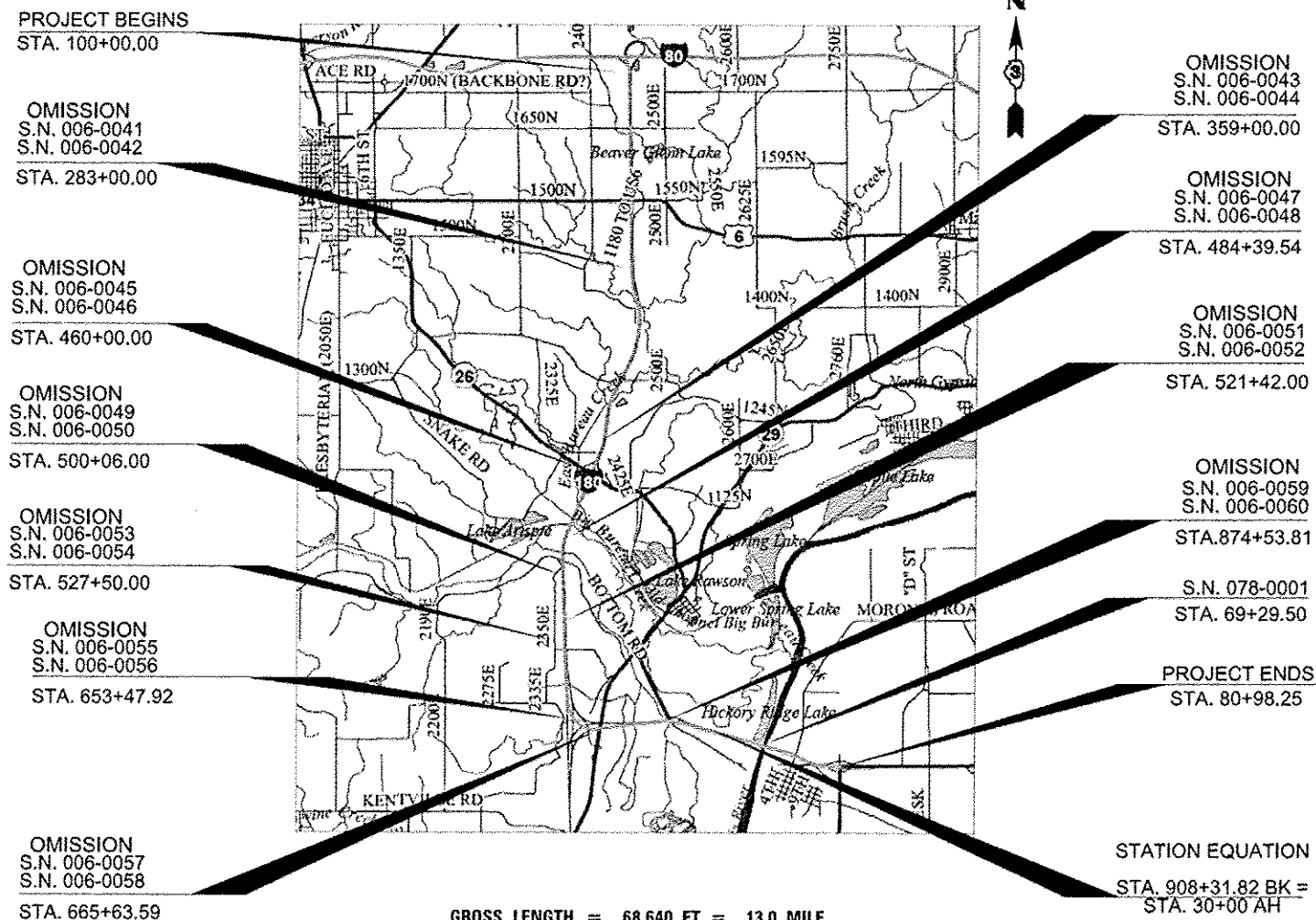
SUBMITTED *3-29 2013*
Paul A. Latam
DEPUTY DIRECTOR OF HIGHWAYS, REGION ENGINEER

May 10 2013
John D. Baranelli, P.E.
ENGINEER OF DESIGN AND ENVIRONMENT

May 10 2013
Omer Osman, P.E.
DIRECTOR OF HIGHWAYS, CHIEF ENGINEER

**PRINTED BY THE AUTHORITY
OF THE STATE OF ILLINOIS**

0.2 MILES SOUTH OF I-80 TO 2.2 MILES EAST OF IL 29



FULL SIZE PLANS HAVE BEEN PREPARED USING STANDARD ENGINEERING SCALES. REDUCED SIZED PLANS WILL NOT CONFORM TO STANDARD SCALES. IN MAKING MEASUREMENTS ON REDUCED PLANS, THE ABOVE SCALES MAY BE USED.

J.U.L.I.E.
JOINT UTILITY LOCATION INFORMATION FOR EXCAVATION
1-800-892-0123
OR 811

PROJECT ENGINEER: JOE KANNEL, P.E.
UNIT CHIEF: SCOTT FERGUSON, P.E.
DISTRICT NO. (815)-434-6131
CONTRACT NO. 66C72

GROSS LENGTH = 68,640 FT. = 13.0 MILE
NET LENGTH = 64,230 FT. = 12.2 MILE