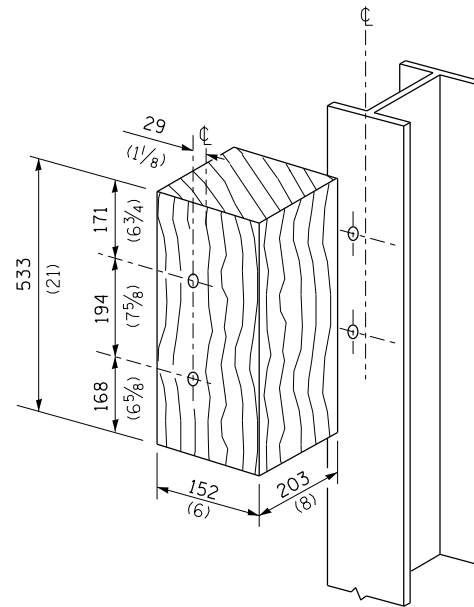
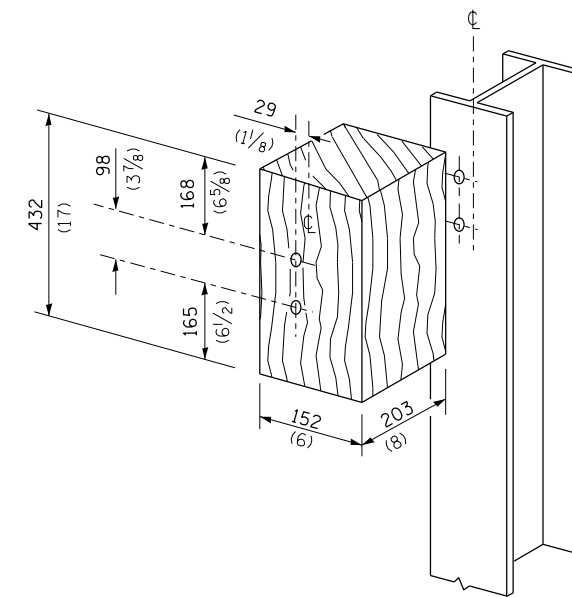


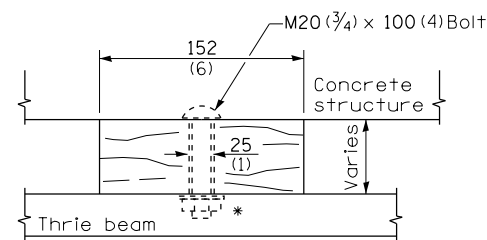
MODIFIED THICKNESS WOOD BLOCKOUT DETAIL



POSTS 1-11 WOOD BLOCKOUT DETAIL

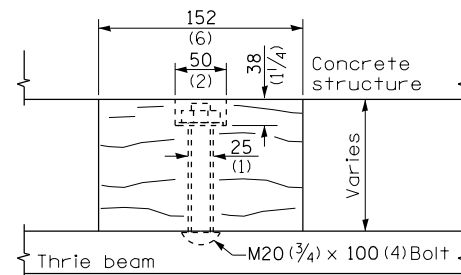


POST 12 WOOD BLOCKOUT DETAIL

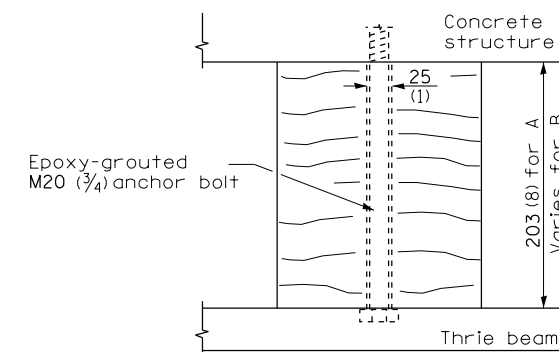


WOOD BLOCKOUT D

Bolt to thrie beam with M20 (3/4) by 100 (4) bolt, washer & nut. Reverse direction of insertion. *



WOOD BLOCKOUT C



WOOD BLOCKOUT A & B

FILE NAME =	USER NAME = corcoranlm	DESIGNED -	REVISED -
et:\pw\work\p\dot\corcoranlm\d0329287\066C76-sht-details.dgn		DRAWN -	REVISED -
	PLOT SCALE = 100.0000' / in.	CHECKED -	REVISED -
	PLOT DATE = 3/25/2013	DATE -	REVISED -

STATE OF ILLINOIS
DEPARTMENT OF TRANSPORTATION

PRE-MGS EFFECTIVE 4-1-06 TRAFFIC BARRIER TERMINAL, TYPE 6B STANDARD 631033-01			
SCALE:	SHEET NO.	OF SHEETS	STA. TO STA.
			Sheet 2 of 2

• D-3 HIGHWAY DAMAGE REPAIR 2014				
F.A. RTE.	SECTION	COUNTY	TOTAL SHEETS	SHEET NO.
VAR.	*	VAR.	43	40
			CONTRACT NO. 66C76	
FED. ROAD DIST. NO.		ILLINOIS FED. AID PROJECT		