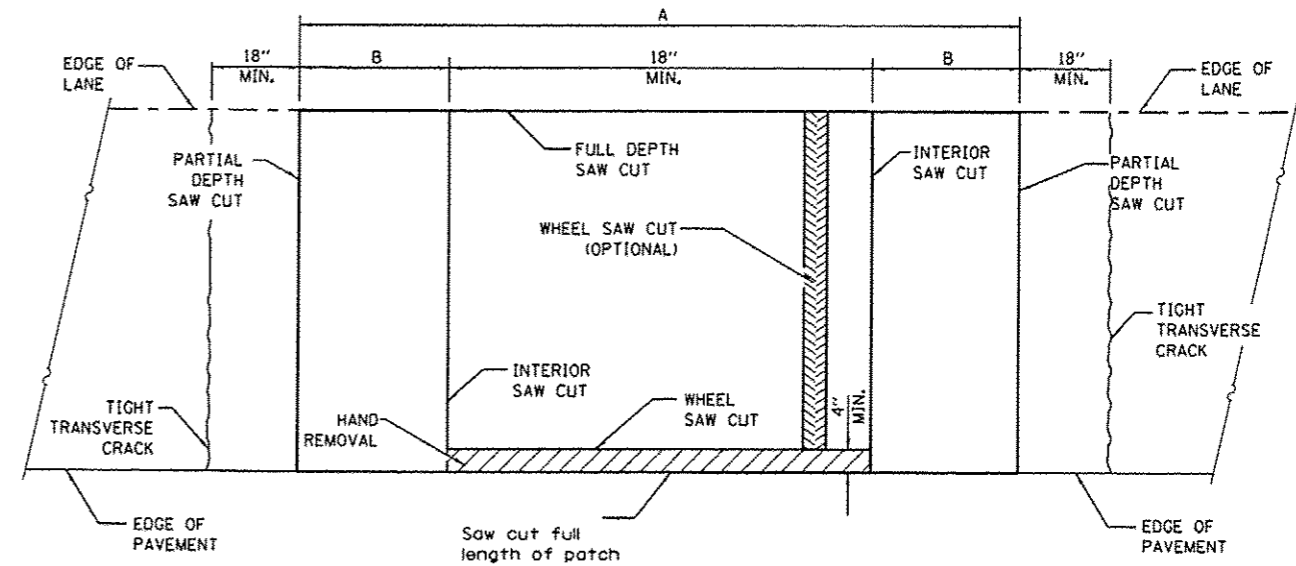
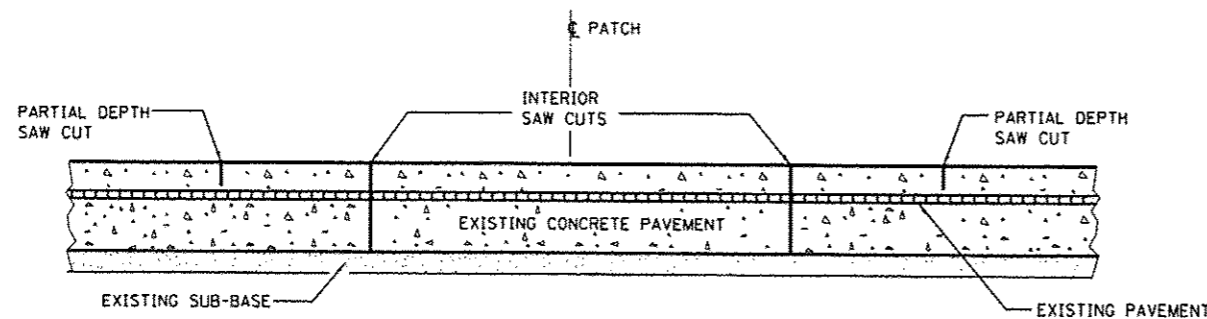


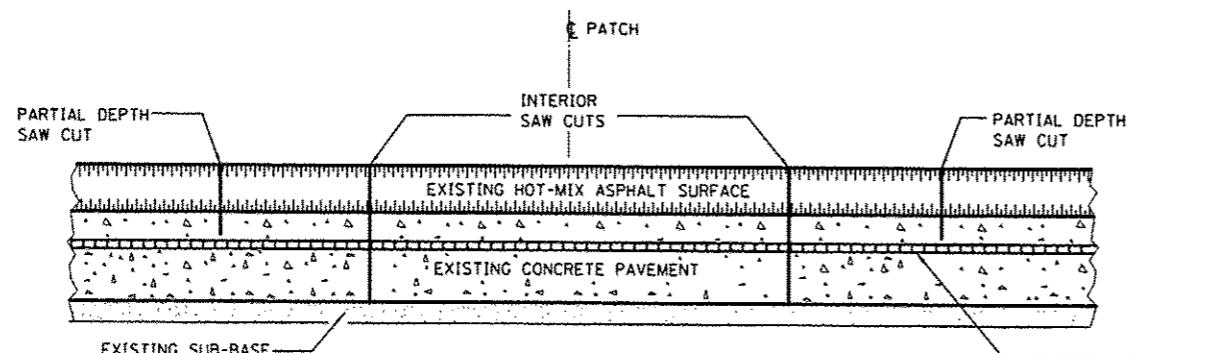
**PAVEMENT SAWING DETAIL**  
(HMA SHOULDER)



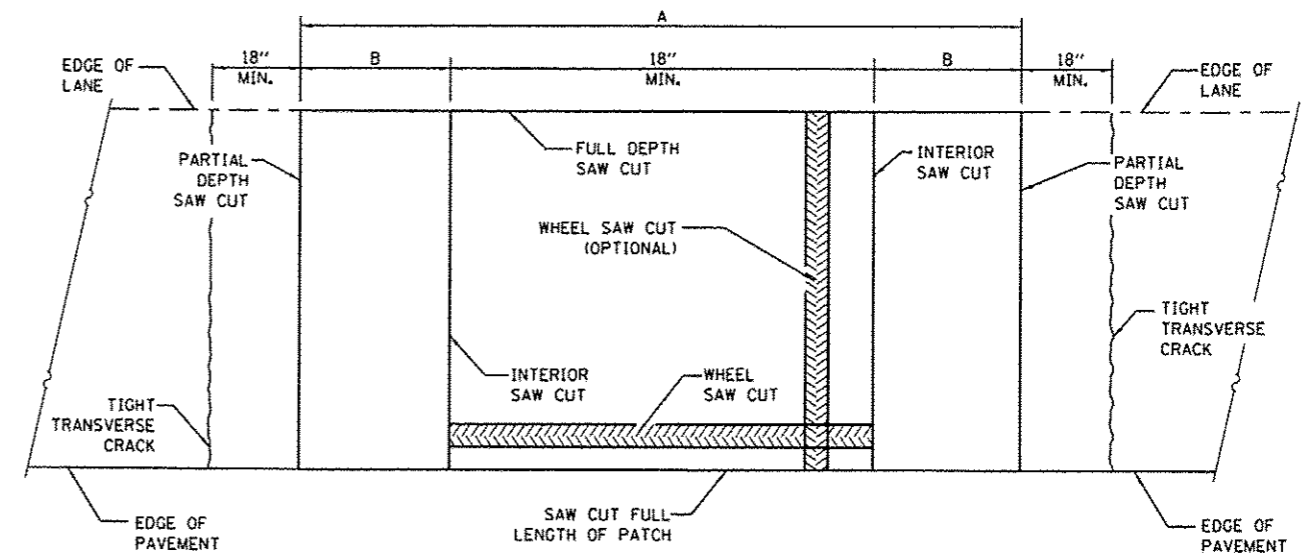
**PAVEMENT SAWING DETAIL**  
(PCC SHOULDER)



**SAW CUT DETAIL**  
WITHOUT HMA SURFACE



**SAW CUT DETAIL**  
WITH HMA SURFACE



**ALTERNATE SAWING DETAIL**  
(PCC SHOULDER)

EXISTING REINFORCEMENT BARS	A (MIN.)	B (MIN.)	C (MIN.)
#5	4'-6"	18"	16"
#6	5'-0"	21"	19"
#7	5'-6"	24"	22"
FABRIC	5'-0"	21"	18"

**GENERAL NOTES**

WHEN PATCHING TWO ADJACENT LANES IN ONE OPERATION THE LONGITUDINAL JOINT SHALL BE LONGITUDINAL SAWED JOINT AS DETAILED ON STANDARD 420001, HOWEVER, THE GROOVE MAYBE EITHER PREFORMED OR SAWED.

SEE STANDARD 421001 FOR DETAILS OF PAVEMENT REINFORCEMENT.

FILE NAME *	USER NAME * woodshankr	DESIGNED -	REVISED -
c:\pwwork\psidot\woodshankr\10336599\0366092-shit-details.dgn		DRAWN -	REVISED -
#MODELNAME*	PLOT SCALE * 100.0000' / in.	CHECKED -	REVISED -
	PLOT DATE * 3/28/2013	DATE -	REVISED -

STATE OF ILLINOIS  
DEPARTMENT OF TRANSPORTATION

**CLASS A PATCHES**

SCALE: SHEET 1 OF 3 SHEETS STA. TO STA.

F.A.I. RTE.	SECTION	COUNTY	TOTAL SHEETS	SHEET NO.
57	03 PATCHING 2014-4	IROQUOIS	19	13
CONTRACT NO. 66C92			[ILLINOIS] FED. AID PROJECT	