

F.A.I. RTE.	SECTION	COUNTY	TOTAL SHEETS	SHEET NO.
*	D3 RUMBLESTRIPS	VARIOUS	5	1
* VARIOUS ROUTES ILLINOIS			CONTRACT NO. 66C99	

STATE OF ILLINOIS
DEPARTMENT OF TRANSPORTATION

DIVISION OF HIGHWAYS

**PROPOSED
HIGHWAY PLANS**

VARIOUS ROUTES
SECTION D3 RUMBLE STRIPS
PROJECT: HSIP-0005(930)
SHOULDER RUMBLE STRIPS

VARIOUS (DEKALB, LASALLE, BUREAU, AND LIVINGSTON) COUNTIES

C-93-097-13

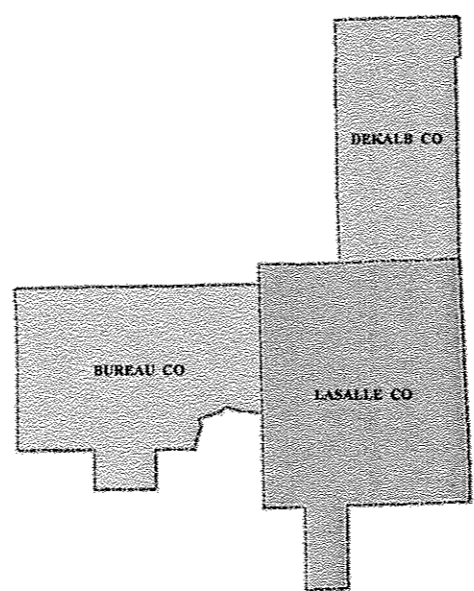
INDEX OF SHEETS

1. COVER SHEET
2. GENERAL NOTES AND SIGNATURE BLOCK
3. SUMMARY OF QUANTITIES
4. TYPICAL SECTION DETAILS AND MATERIAL TABLE
5. SCHEDULE OF QUANTITIES

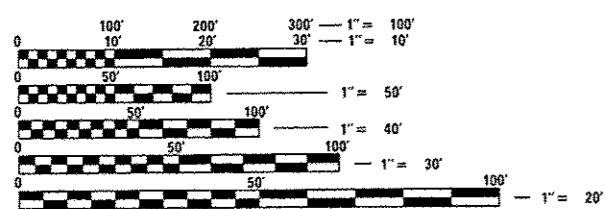
STANDARDS

000001-06	STANDARD SYMBOLS, ABBREVIATIONS AND PATTERNS
001006	DECIMAL OF AN INCH AND OF A FOOT
642006	SHOULDER RUMBLE STRIPS, 8 INCH
642001-02	SHOULDER RUMBLE STRIPS, 16 INCH
701306-03	LANE CLOSURE, 2L, 2W, SLOW MOVING OPERATIONS DAY ONLY, FOR SPEEDS **e** 45 MPH
701901-02	TRAFFIC CONTROL DEVICES
780001-03	TYPICAL PAVEMENT MARKINGS

D-93-044-13



LOCATION MAP
NOT TO SCALE



FULL SIZE PLANS HAVE BEEN PREPARED USING STANDARD ENGINEERING SCALES. REDUCED SIZED PLANS WILL NOT CONFORM TO STANDARD SCALES. IN MAKING MEASUREMENTS ON REDUCED PLANS, THE ABOVE SCALES MAY BE USED.

J.U.L.I.E.
JOINT UTILITY LOCATION INFORMATION FOR EXCAVATION
1-800-892-0123
OR 811

DISTRICT 3 NO. (815) 434-6131
PROJECT ENGINEER: JOE KANNEL, P.E.
UNIT CHIEF: SCOTT A. FERGUSON

CONTRACT NO. 66C99

STATE OF ILLINOIS
DEPARTMENT OF TRANSPORTATION
DIVISION OF HIGHWAYS

SUBMITTED 3-29-13
Paul A. Costerton
DEPUTY DIRECTOR OF HIGHWAYS, REGION ENGINEER

May 10 20 13
Don D. Baranzelli PE
ENGINEER OF DESIGN AND ENVIRONMENT

May 10 20 13
omer osman PE
DIRECTOR OF HIGHWAYS, CHIEF ENGINEER

PRINTED BY THE AUTHORITY
OF THE STATE OF ILLINOIS