

STATE OF ILLINOIS
DEPARTMENT OF TRANSPORTATION
DIVISION OF HIGHWAYS

**PROPOSED
HIGHWAY PLANS**

**VARIOUS ROUTES
SECTION D3 RUMBLE STRIPS-2
PROJECT: HSIP-0005(932)
SHOULDER RUMBLE STRIPS**

IROQUOIS, LIVINGSTON, KANKAKEE, AND GRUNDY COUNTIES

C-93-098-13

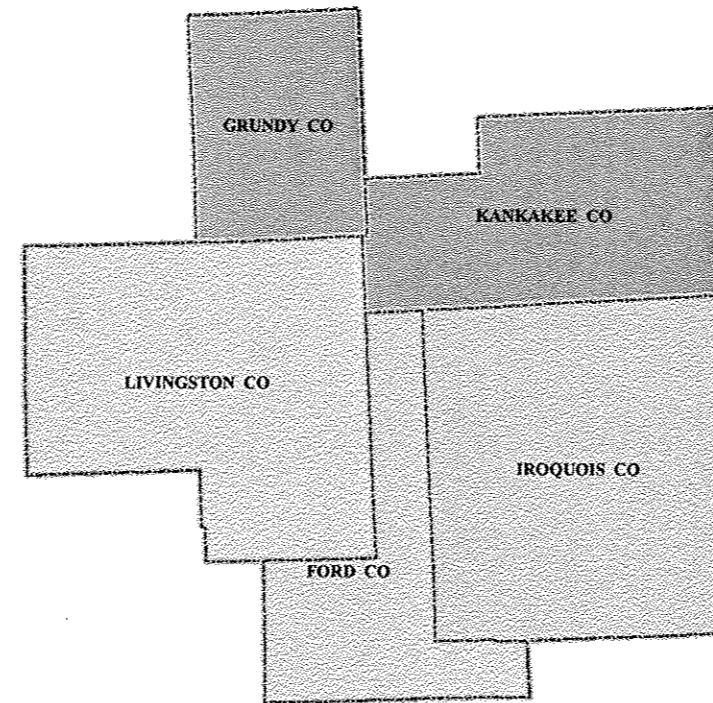
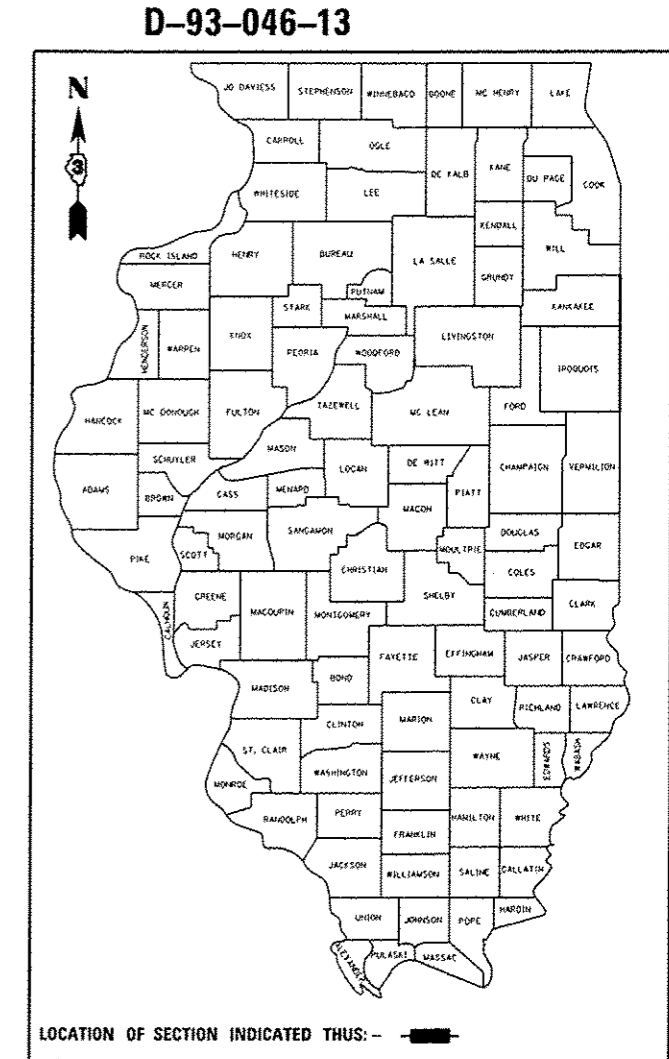
| F.A.I. RTE. | SECTION | COUNTY | TOTAL SHEETS | SHEET NO. |
|------------------|-------------------|----------|--------------------|-----------|
| * | D3 RUMBLESTRIPS-2 | VARIOUS | 5 | 1 |
| * VARIOUS ROUTES | | ILLINOIS | CONTRACT NO. 66D01 | |

INDEX OF SHEETS

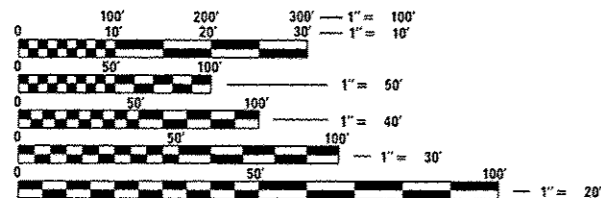
1. COVER SHEET
2. GENERAL NOTES AND SIGNATURE BLOCK
3. SUMMARY OF QUANTITIES
4. TYPICAL SECTION DETAILS AND MATERIAL TABLE
5. SCHEDULE OF QUANTITIES

STANDARDS

| | |
|-----------|--|
| 000001-06 | STANDARD SYMBOLS, ABBREVIATIONS AND PATTERNS |
| 001006 | DECIMAL OF AN INCH AND OF A FOOT |
| 642006 | SHOULDER RUMBLE STRIPS, 8 INCH |
| 642001-02 | SHOULDER RUMBLE STRIPS, 16 INCH |
| 701306-03 | LANE CLOSURE, 2L, 2W, SLOW MOVING OPERATIONS DAY ONLY, FOR SPEEDS **e** 45 MPH |
| 701901-02 | TRAFFIC CONTROL DEVICES |
| 780001-03 | TYPICAL PAVEMENT MARKINGS |



LOCATION MAP
NOT TO SCALE



FULL SIZE PLANS HAVE BEEN PREPARED USING STANDARD ENGINEERING SCALES. REDUCED SIZED PLANS WILL NOT CONFORM TO STANDARD SCALES. IN MAKING MEASUREMENTS ON REDUCED PLANS, THE ABOVE SCALES MAY BE USED.

J.U.L.I.E.
JOINT UTILITY LOCATION INFORMATION FOR EXCAVATION
1-800-892-0123
OR 811

DISTRICT 3 NO. (815) 434-6131
PROJECT ENGINEER: JOE KANNEL, P.E.
UNIT CHIEF: SCOTT A. FERGUSON

CONTRACT NO. 66D01

STATE OF ILLINOIS
DEPARTMENT OF TRANSPORTATION
DIVISION OF HIGHWAYS

SUBMITTED 3-29-13
Paul A. Laetson
DEPUTY DIRECTOR OF HIGHWAYS, REGION ENGINEER

May 10 2013
John D. Baranecchi, P.E.
ENGINEER OF DESIGN AND ENVIRONMENT

May 10 2013
Omer Osman, P.E.
DIRECTOR OF HIGHWAYS, CHIEF ENGINEER

PRINTED BY THE AUTHORITY
OF THE STATE OF ILLINOIS

GENERAL NOTES

PLAN DIMENSIONS RELATIVE TO THE EXISTING ROADWAY HAVE BEEN TAKEN FROM EXISTING PLANS AND ARE SUBJECT TO NOMINAL CONSTRUCTION VARIATIONS. IT SHALL BE THE CONTRACTOR'S RESPONSIBILITY TO MAKE NECESSARY ADJUSTMENTS PRIOR TO CONSTRUCTION OR ORDERING OF MATERIALS. SUCH VARIATIONS SHALL NOT BE CAUSE FOR ADDITIONAL COMPENSATION FOR A CHANGE IN THE SCOPE OF THE WORK. HOWEVER, THE CONTRACTOR WILL BE PAID FOR THE QUANTITY FURNISHED AT THE UNIT PRICE BID FOR THE WORK.

ANY REFERENCE TO A STANDARD IN THESE PLANS SHALL BE INTERPRETED TO MEAN THE EDITION AS INDICATED BY THE SUBNUMBER SHOWN IN THE LIST OF STANDARDS OR THE COPY INCLUDED IN THESE PLANS.

THE CONTRACTOR SHALL CONTACT JULIE AT LEAST 48 HOURS PRIOR TO EXCAVATION TO DETERMINE WHICH UTILITIES ARE IN THE AREA.

| | | |
|-----------------|-----|------------------|
| HMA RESURFACING | 112 | LBS / SQ YD / IN |
|-----------------|-----|------------------|

| BITUMINOUS MATERIALS (PRIME COAT) RATES | |
|--|---|
| TYPE OF SURFACE TO BE PRIMED | RESIDUAL ASPHALT RATE LB/SQ FT (KG/SQ M) |
| MILLED HMA, AGED NON-MILLED HMA, MILLED CONCRETE, NON-MILLED CONCRETE & FINED CONCRETE | 0.05 |
| FOG COAT BETWEEN HMA LIFTS, IL-4.75 & BRICK | 0.025 |

COMMITMENTS

DISPOSAL OF EXCAVATED MATERIALS. ALL SUITABLE OR UNSUITABLE MATERIALS EXCAVATED DUE TO CONSTRUCTION OPERATIONS SHALL BE DISPOSED OF WITHIN THE LIMITS OF EXISTING RIGHT OF WAY. DISPOSAL OF EXCAVATED MATERIALS OFF THE RIGHT OF WAY SHALL NOT BE PERMITTED.

EXCAVATED MATERIALS SHALL BE DISPOSED OF AT LOCATIONS DIRECTED BY THE ENGINEER. ANY SUCH DISPOSAL SHALL NOT CREATE AND UNSIGHTLY OR OBJECTIONABLE APPEARANCE OR DETRACT FROM THE NATURAL TOPOGRAPHIC FEATURES WITHOUT WRITTEN PERMISSION FROM THE ENGINEER.

DATE: 3-29-13

PREPARED BY: *Tom Bonin*
DISTRICT STUDIES & PLANS ENGINEER

EXAMINED BY: *Hal Jones*
DISTRICT CONSTRUCTION ENGINEER

Wayne Phillips
DISTRICT MATERIALS ENGINEER

Bruce A. Tucker
DISTRICT OPERATIONS ENGINEER

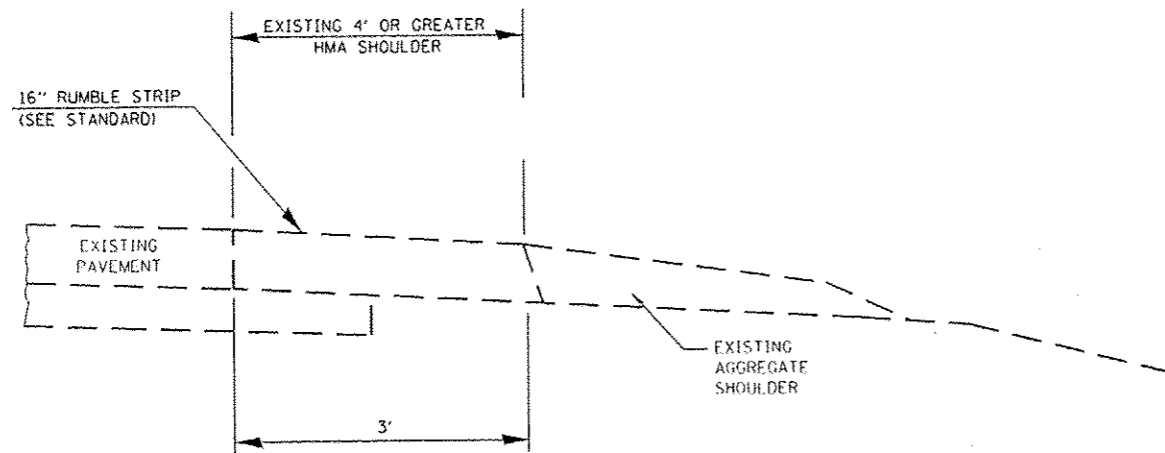
| | | | | | | | | | | |
|--|---------------------|---------------------|---------------------------|---|----------------------|--------------------|---------|--------|--------------|-----------|
| FILE NAME: c:\pe_work\psidot\ferguson\0333082\06083-shl-daten1.dgn | USER NAME: ferguson | DESIGNED: DBS | REVISED: - | STATE OF ILLINOIS DEPARTMENT OF TRANSPORTATION | GENERAL NOTES | F.A.I. RTE. | SECTION | COUNTY | TOTAL SHEETS | SHEET NO. |
| PLOT SCALE: 1/8" = 1'-0" | DRAWN: DBS | REVISED: - | * D3 RUMBLESTRIPS-2 | | | VARIOUS | 5 | 2 | | |
| PLOT DATE: 3/29/2013 | CHECKED: - | REVISED: - | * VARIOUS ROUTES | | | CONTRACT NO. 66001 | | | | |
| DATE: FEBRUARY 2013 | DATE: - | REVISED: - | ILLINOIS FED. AID PROJECT | | | | | | | |
| SCALE: | | SHEET 1 OF 1 SHEETS | | STA. TO STA. | | | | | | |

| CODE NO. | ITEM | UNIT | CONSTR. CODE | |
|------------|---|-------|--------------|-----------|
| | | | FED / STATE | 90% / 10% |
| | | | ROADWAY | |
| | | | 0021 | |
| | | | RURAL | |
| 44000155 | HOT-MIX ASPHALT SURFACE REMOVAL, 1 1/2" | SQ YD | 72022 | |
| 48203003 | HOT-MIX ASPHALT SHOULDERS, 1 1/2" | SQ YD | 72022 | |
| 64200108 | SHOULDER RUMBLE STRIPS, 8 INCH | FOOT | 491351.4 | |
| 64200116 | SHOULDER RUMBLE STRIPS, 16 INCH | FOOT | 453024 | |
| 67100100 | MOBILIZATION | L SUM | 1 | |
| 70100460 | TRAFFIC CONTROL AND PROTECTION, STANDARD 701306 | L SUM | 1 | |
| * 78001110 | PAINT PAVEMENT MARKING - LINE 4" | FOOT | 216066 | |
| X4060110 | BITUMINOUS MATERIALS (PRIME COAT), SPECIAL | POUND | 3601.1 | |

6

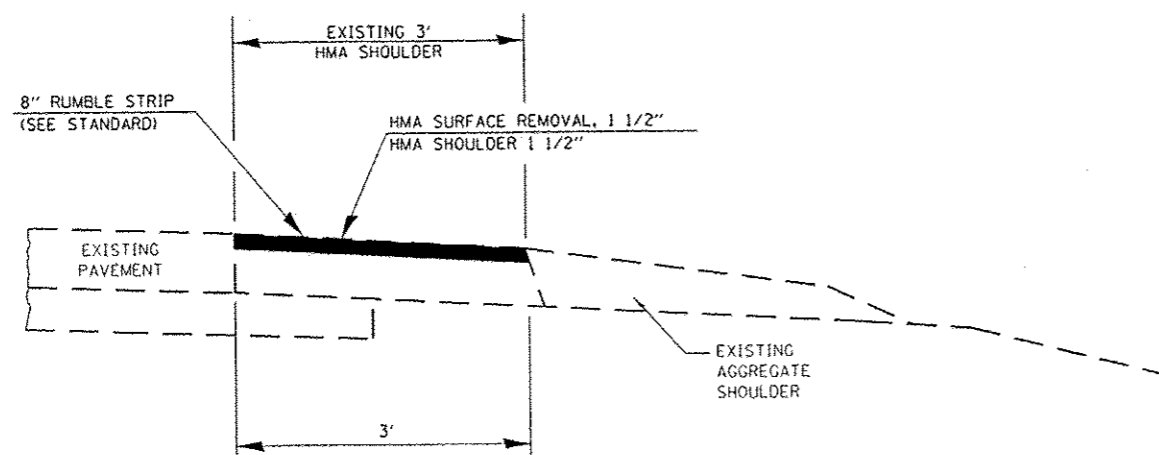
**Specialty Items*

| | | | | | | | | | | |
|---|------------------------|-----------------|---------------------------|---|------------------------------|---------------------|---------|--------------|--------------|-----------|
| FILE NAME * | USER NAME * Fergusonso | DESIGNED - OBS | REVISED - _____ | STATE OF ILLINOIS DEPARTMENT OF TRANSPORTATION | SUMMARY OF QUANTITIES | F.A.J. RTE. | SECTION | COUNTY | TOTAL SHEETS | SHEET NO. |
| c:\pwork\pvidot\fergusonso\0333082\066CB3-att-details.dgn | DRAWN - OBS | REVISED - _____ | * D3 RUMBLESTRIPS-2 | | | VARIOUS | 5 | 3 | | |
| PLOT SCALE = 100.0000' / in. | CHECKED - _____ | REVISED - _____ | * VARIOUS ROUTES | | | CONTRACT NO. 66D01 | | | | |
| PLOT DATE = 3/29/2013 | DATE - FEBRUARY 2013 | REVISED - _____ | ILLINOIS FED. AID PROJECT | | | | | | | |
| | | | | | SCALE: | SHEET 1 OF 1 SHEETS | | STA. TO STA. | | |

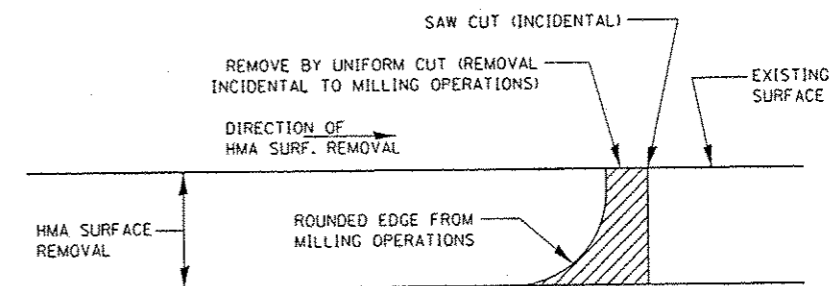


HMA SHOULDER REPAIR AND RUMBLE STRIP DETAIL

| HMA SURFACE FOR SHOULDERS | |
|---------------------------|--------------------|
| PG GRADE | PG64-22 |
| DESIGN AIR VOIDS | 4.0% @ NSO |
| MIXTURE COMPOSITION | IL 9.5 FG |
| FRICTION AGGREGATE | MIXTURE C |
| DENSITY CONTROL METHOD | CORES/ CORRELATION |



HMA SHOULDER REPAIR AND RUMBLE STRIP DETAIL



NOTE:
WHEN MILLING OPERATIONS PRODUCE A ROUNDED EDGE, THEN A SAW CUT SHALL BE USED TO MANUFACTURE A PERPENDICULAR EDGE AS SHOWN IN THE DETAIL. THE ENGINEER SHALL BE THE SOLE JUDGE CONCERNING THE USE OF THIS DETAIL.

HMA DETAIL AT BUTT JOINTS

| | | | | | | | | | | | | |
|--|-----------|----------|---------------|---|------------------|---------------------|---------------|---------|-------------------|---------------------------|-----------|---|
| FILE NAME | USER NAME | DESIGNED | REVISED | STATE OF ILLINOIS DEPARTMENT OF TRANSPORTATION | TYPICAL SECTIONS | | F.A.I. R.T.E. | SECTION | COUNTY | TOTAL SHEETS | SHEET NO. | |
| c:\p\work\sp\dot\1\fergusson\108333882\0 | Ferguson | OBS | | | SCALE: | SHEET 1 OF 1 SHEETS | STA. TO STA. | * | 03 RUMBLESTRIPS-2 | VARIOUS | 5 | 4 |
| 066CB3-shr-detail.dgn | | OBS | | | | | | * | VARIOUS ROUTES | | | |
| PLOT SCALE | 100.0000 | CHECKED | | | | | | | | | | |
| PLOT DATE | 3/29/2013 | DATE | FEBRUARY 2013 | | | | | | | | | |
| | | | | | | | | | | ILLINOIS FED. AID PROJECT | | |

RUMBLE STRIP SCHEDULE

| ROUTE | LOCATION | LENGTH FOOT | SHOULDER WIDTH | 8" RUMBLE STRIP FOOT | 16" RUMBLE STRIP FOOT | HMA SURF REM 1 1/2" SQ YD | HMA SHLDR 1 1/2" SQ YD | HMA PRIME COAT POUND | PAINT PVMT MARKING 4" WHITE FOOT |
|-------------------|--|----------------|------------------------|-------------------------------|--------------------------------|---------------------------------------|---------------------------------|-------------------------------|--|
| IROQUOIS COUNTY | | | | | | | | | |
| US 24 | From Ford Co. line to 600 E Rd. | 30945 | 3' bit 4' Agg 1' earth | 61890 | | 20630 | 20630 | 1031.5 | 61890 |
| US 24 | From 800 E Rd E. of Gilman to 1400 E Rd W. of Crescent | 11680 | 3' bit 4' Agg 1' earth | 63360 | | 21120 | 21120 | 1056 | 63360 |
| IL 1 | CH 2 (2400N) to 700' S of US 52 | 11450.7 | 3' bit 3' Agg | 22901.4 | | | | | |
| LIVINGSTON COUNTY | | | | | | | | | |
| IL 47 | Ford Co. line to 200 N Rd. S. of Strawn | 11088 | 3'-7' bit 3 agg | | 22176 | | | | |
| IL 47 | 500' N Strawn to E 700 N Rd S. of Forest | 28512 | 3'-7' bit 3 agg | | 57024 | | | | |
| IL 47 | Church St. N. of Forest to E 31st Rd S. of Dwight | 116688 | 3'-7' bit 3 agg | | 233376 | | | | |
| IL 116 | Woodford County Line to West of I-55 | 70224 | 4' bit 3' agg | | 140448 | | | | |
| KANKAKEE COUNTY | | | | | | | | | |
| IL 17 | Livingston Co. line to S. Warner Bridge Rd. | 63360 | 3' bit 3' agg | 126720 | | | | | |
| IL 1/17 | E 500 N Rd. to 150' west of IL 114 intersection | 24288 | 3' bit 3' agg | 48576 | | 16192 | 16192 | 809.6 | 48576 |
| GRUNDY COUNTY | | | | | | | | | |
| IL 47 | 11000 S Rd. N. of Dwight to RR tracks S. of Mazon | 41712 | 3'-7' bit 3 agg | 83424 | | | | | |
| IL 47 | N. of Mazon to Dupont Rd. | 21120 | 3'-7' bit 3 agg | 42240 | | 14080 | 14080 | 704 | 42240 |
| IL 47 | 8000 N Rd N. Of Morris to the Kendall Co. Line | 21120 | 3'-7' bit 3 agg | 42240 | | | | | |
| TOTAL | | | | 491351.4 | 453024 | 72022 | 72022 | 3601.1 | 216066 |