

F.A.I. RTE.	SECTION	COUNTY	TOTAL SHEETS	SHEET NO.
55	D3 PATCHING 2014-7	LIVINGSTON	12	1
		ILLINOIS	CONTRACT NO. 66D03	

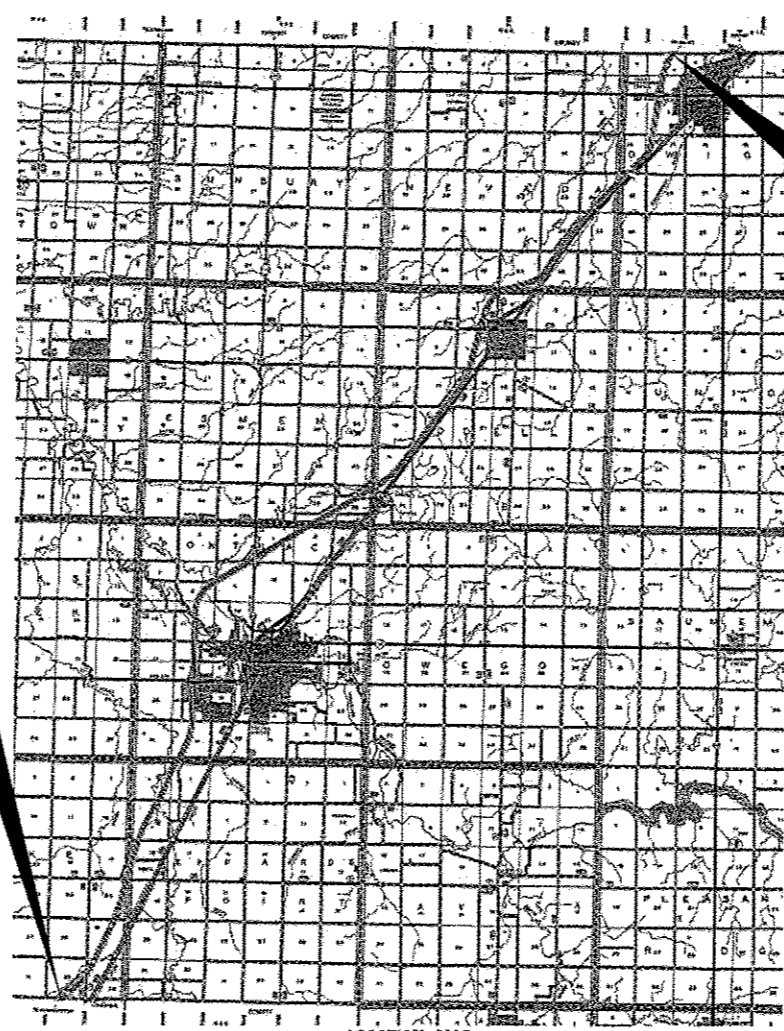
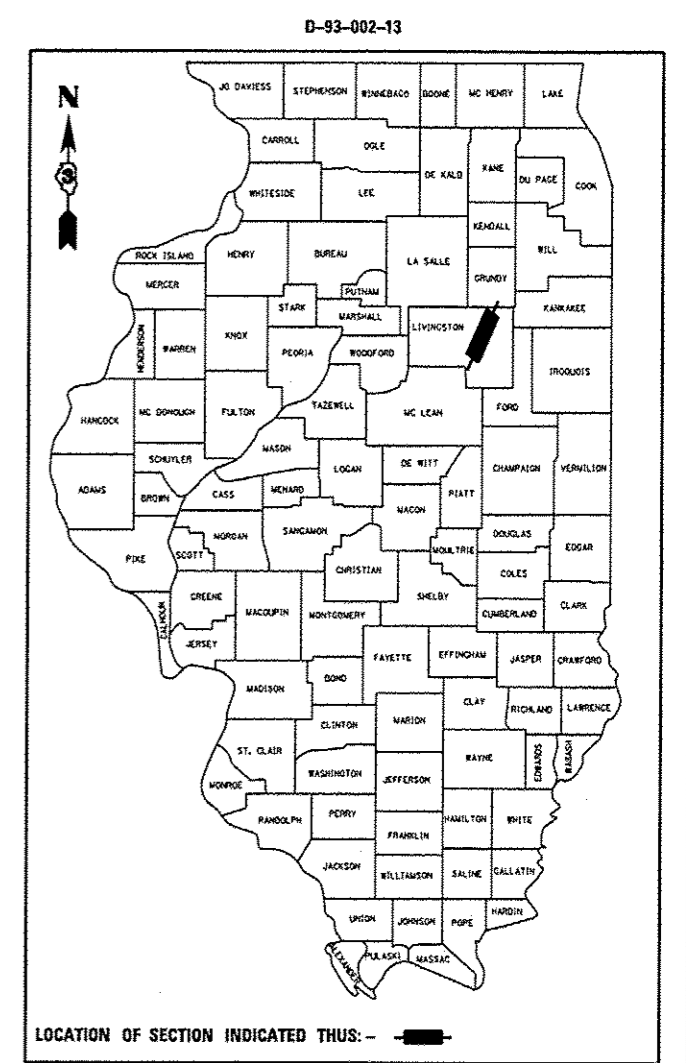
STATE OF ILLINOIS  
DEPARTMENT OF TRANSPORTATION  
DIVISION OF HIGHWAYS  
**PROPOSED  
HIGHWAY PLANS**  
FAI ROUTE 55 (I-55)  
SECTION D3 PATCHING 2014-7  
PAVEMENT PATCHING  
LIVINGSTON COUNTY  
C-93-101-13

**INDEX OF SHEETS**

1. COVER SHEET
2. GENERAL NOTES
3. SUMMARY OF QUANTITIES
4. TYPICAL SECTIONS
- 5 - 7. SCHEDULES
8. TRAFFIC CONTROL AND PROTECTION, STANDARD 701400 (SPECIAL)
- 9 - 11. CLASS A PATCHES
12. TYPICAL PAVEMENT MARKINGS

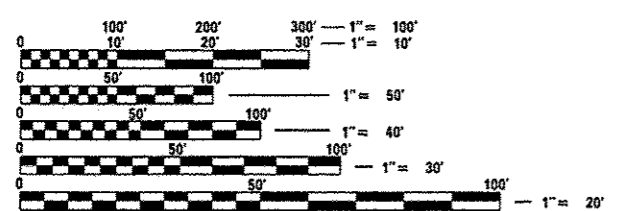
**HIGHWAY STANDARDS**

- |           |   |
|-----------|---|
| 000001-06 | STANDARD SYMBOLS, ABBREVIATIONS AND PATTERNS                                  |
| 001001-02 | AREAS OF REINFORCEMENT BARS   |
| 001006    | DECIMAL OF AN INCH AND OF A FOOT  |
| 420701-02 | PAVEMENT FABRIC   |
| 421001-02 | BAR REINFORCEMENT FOR CRC PAVEMENT  |
| 701101-03 | OFF-ROAD OPERATIONS MULTILANE, 15' (4.5 m) TO 24" (600 mm) FROM PAVEMENT EDGE |
| 701401-07 | LANE CLOSURE, FREEWAY/EXPRESSWAY  |
| 701411-08 | LANE CLOSURE, MULTILANE, AT ENTRANCE OR EXIT RAMP FOR SPEEDS ≥ 45 MPH         |
| 701426-05 | LANE CLOSURE, MULTILANE INTERMITTENT OR MOVING OPERATION, FOR SPEEDS ≥ 45 MPH |
| 701901-02 | TRAFFIC CONTROL DEVICES   |



**PROJECT BEGINS  
MCLEAN COUNTY LINE  
(M.P. 187.70)**

**PROJECT ENDS  
GRUNDY COUNTY LINE  
(M.P. 218.07)**



FULL SIZE PLANS HAVE BEEN PREPARED USING STANDARD ENGINEERING SCALES. REDUCED SIZED PLANS WILL NOT CONFORM TO STANDARD SCALES. IN MAKING MEASUREMENTS ON REDUCED PLANS, THE ABOVE SCALES MAY BE USED.

J.U.L.I.E.  
JOINT UTILITY LOCATION INFORMATION FOR EXCAVATION  
1-800-892-0123  
OR 811

**PROJECT ENGINEER: JOE KANNEL P.E.  
UNIT CHIEF: RON WOODSHANK  
TOWNSHIP: VARIOUS  
CONTRACT NO. 66D03**

RURAL	
INTERSTATE	
FAI 55 (I-55)	
2011	
AOT	23400
P.V.	64.59%
S.U.	11.73%
M.U.	23.68%

STATE OF ILLINOIS  
DEPARTMENT OF TRANSPORTATION  
DIVISION OF HIGHWAYS

SUBMITTED *Paul A. Lantieri* 4-3-13  
DEPUTY DIRECTOR OF HIGHWAYS, REGION ENGINEER

*May 10 2013*  
*John D. Baranelli P.E.*  
ENGINEER OF DESIGN AND ENVIRONMENT

*May 10 2013*  
*Omer Osham P.E.*  
DIRECTOR OF HIGHWAYS, CHIEF ENGINEER

**PRINTED BY THE AUTHORITY  
OF THE STATE OF ILLINOIS**

LOCATION MAP  
NOT TO SCALE  
GROSS LENGTH = 160354 FT. = 30.000 MI.  
NET LENGTH = 455 FT. = 0.084 MI.