

DEPARTMENT OF TRANSPORTATION

DIVISION OF HIGHWAYS

**PROPOSED  
HIGHWAY PLANS**

FAI ROUTE 55 (I-55)

SECTION D3 PATCHING 2014-7

PAVEMENT PATCHING  
LIVINGSTON COUNTY

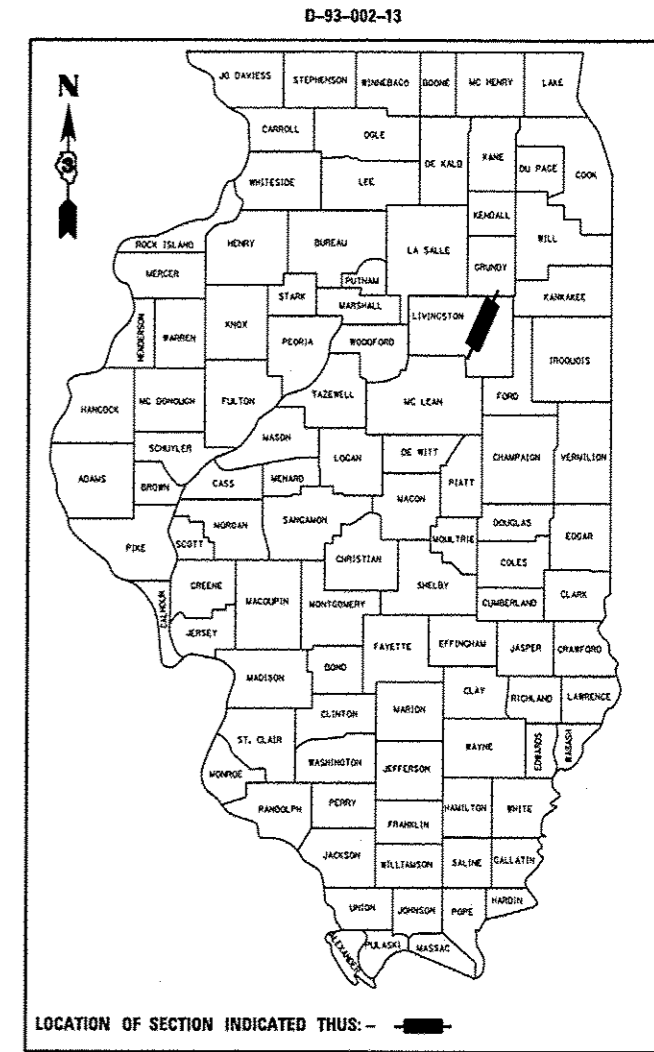
C-93-101-13

F.A.I. R.T.E.	SECTION	COUNTY	TOTAL SHEETS	SHEET NO.
55	D3 PATCHING 2014-7	LIVINGSTON	12	1
		ILLINOIS	CONTRACT NO. 66D03	

1. COVER SHEET
2. GENERAL NOTES
3. SUMMARY OF QUANTITIES
4. TYPICAL SECTIONS
- 5 - 7. SCHEDULES
8. TRAFFIC CONTROL AND PROTECTION, STANDARD 701400 (SPECIAL)
- 9 - 11. CLASS A PATCHES
12. TYPICAL PAVEMENT MARKINGS

HIGHWAY STANDARDS

- 000001-06 STANDARD SYMBOLS, ABBREVIATIONS AND PATTERNS
- 001001-02 AREAS OF REINFORCEMENT BARS
- 001006 DECIMAL OF AN INCH AND OF A FOOT
- 420701-02 PAVEMENT FABRIC
- 421001-02 BAR REINFORCEMENT FOR CRC PAVEMENT
- 701101-03 OFF-ROAD OPERATIONS MULTILANE, 15' (4.5 m) TO 24" (600 mm) FROM PAVEMENT EDGE
- 701401-07 LANE CLOSURE, FREEWAY/EXPRESSWAY
- 701411-08 LANE CLOSURE, MULTILANE, AT ENTRANCE OR EXIT RAMP FOR SPEEDS ≥ 45 MPH
- 701426-05 LANE CLOSURE, MULTILANE INTERMITTENT OR MOVING OPERATION, FOR SPEEDS ≥ 45 MPH
- 701901-02 TRAFFIC CONTROL DEVICES



RURAL	
INTERSTATE	
FAI 55 (I-55)	
2011	
AOT	23400
P.V.	64.59%
S.U.	11.73%
M.U.	23.68%

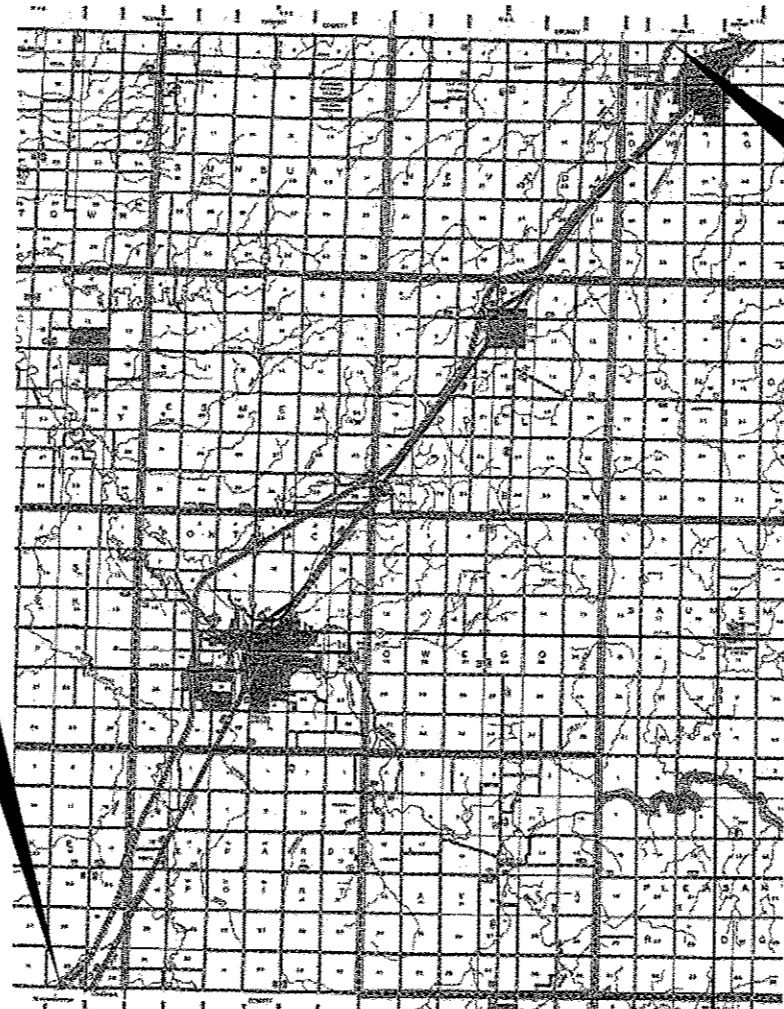
STATE OF ILLINOIS  
DEPARTMENT OF TRANSPORTATION  
DIVISION OF HIGHWAYS

SUBMITTED *Paul A. Lentz* 4-3-13  
DEPUTY DIRECTOR OF HIGHWAYS, REGION ENGINEER

*May 10 2013*  
*John D. Baranelli PE, Jr.*  
ENGINEER OF DESIGN AND ENVIRONMENT

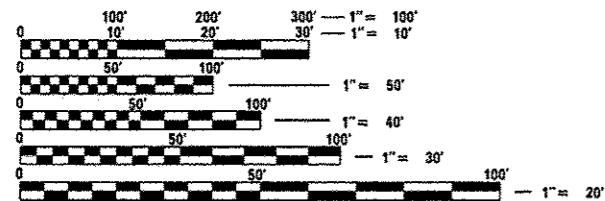
*May 10 2013*  
*Omer Osham PE, Jr.*  
DIRECTOR OF HIGHWAYS, CHIEF ENGINEER

**PRINTED BY THE AUTHORITY  
OF THE STATE OF ILLINOIS**



**PROJECT BEGINS  
MCLEAN COUNTY LINE  
(M.P. 187.70)**

**PROJECT ENDS  
GRUNDY COUNTY LINE  
(M.P. 218.07)**



FULL SIZE PLANS HAVE BEEN PREPARED USING STANDARD ENGINEERING SCALES. REDUCED SIZED PLANS WILL NOT CONFORM TO STANDARD SCALES. IN MAKING MEASUREMENTS ON REDUCED PLANS, THE ABOVE SCALES MAY BE USED.

J.U.L.I.E.  
JOINT UTILITY LOCATION INFORMATION FOR EXCAVATION  
1-800-892-0123  
OR 811

**PROJECT ENGINEER: JOE KANNEL P.E.  
UNIT CHIEF: RON WOODSHANK  
TOWNSHIP: VARIOUS  
CONTRACT NO. 66D03**

LOCATION MAP  
NOT TO SCALE  
GROSS LENGTH = 150354 FT. = 30.000 MI.  
NET LENGTH = 455 FT. = 0.004 MI.

**GENERAL NOTES**

PLAN DIMENSIONS AND DETAILS RELATIVE TO EXISTING PLANS ARE SUBJECT TO NOMINAL CONSTRUCTION VARIATIONS. THE CONTRACTOR SHALL FIELD VERIFY EXISTING DIMENSIONS AND DETAILS AFFECTING NEW CONSTRUCTION AND MAKE NECESSARY APPROVED ADJUSTMENTS PRIOR TO CONSTRUCTION OR ORDERING OF MATERIALS. SUCH VARIATIONS SHALL NOT BE CAUSE FOR ADDITIONAL COMPENSATION FOR A CHANGE IN SCOPE OF WORK; HOWEVER, THE CONTRACTOR WILL BE PAID FOR THE QUANTITY ACTUALLY FURNISHED AT THE UNIT PRICE BID FOR THE WORK.

FOR STABILIZATION, ALL TYPE III BARRICADES WILL REQUIRE A MINIMUM OF FOUR SAND BAGS PER BARRICADE.

ANY REFERENCE TO A STANDARD IN THESE PLANS SHALL BE INTERPRETED TO MEAN THE EDITION AS INDICATED BY THE SUBNUMBER SHOWN IN THE LIST OF STANDARDS OR THE COPY INCLUDED IN THESE PLANS.

THE CONTRACTOR SHALL CONTACT JULIE AT LEAST 48 HOURS PRIOR TO EXCAVATION TO DETERMINE WHICH UTILITIES ARE IN THE AREA.

**COMMITMENTS**

DISPOSAL OF EXCAVATED MATERIALS. ALL UNSUITABLE OR UNSTABLE MATERIALS, DEFINED AS SOILS, EMBANKMENTS, SUB-BASE GRANULAR MATERIALS, AND/OR AGGREGATE MATERIALS THAT ARE EXCAVATED DUE TO CONSTRUCTION OPERATIONS SHALL BE DISPOSED OF WITHIN THE LIMITS OF THE EXISTING RIGHT OF WAY. DISPOSAL OF EXCAVATED MATERIALS, AS DEFINED ABOVE, OFF THE EXISTING RIGHT OF WAY SHALL NOT BE PERMITTED.

EXCAVATED MATERIALS SHALL BE DISPOSED OF AT LOCATIONS DIRECTED BY THE ENGINEER. ANY SUCH DISPOSAL SHALL NOT CREATE AND UNSIGHTLY OR OBJECTIONABLE APPEARANCE OR DETRACT FROM THE NATURAL TOPOGRAPHIC FEATURES WITHOUT WRITTEN PERMISSION FROM THE ENGINEER.

DATE: 4-3-13.

PREPARED BY: Darl Pransale  
DISTRICT STUDIES & PLANS ENGINEER

EXAMINED BY: Herbert  
DISTRICT CONSTRUCTION ENGINEER

Wayne L. Phillips  
DISTRICT MATERIALS ENGINEER

Bruce G. Coker  
DISTRICT OPERATIONS ENGINEER

FILE NAME *	USER NAME * potelyj	DESIGNED - RW	REVISED -
ct:\pwwork\pwidot\potelyj\08337548\0366	95-aht-details.dgn	DRAWN - RW	REVISED -
	PLOT SCALE * 100.0000' / in.	CHECKED -	REVISED -
	PLOT DATE * 4/3/2013	DATE -	REVISED -

**STATE OF ILLINOIS  
DEPARTMENT OF TRANSPORTATION**

**GENERAL NOTES**

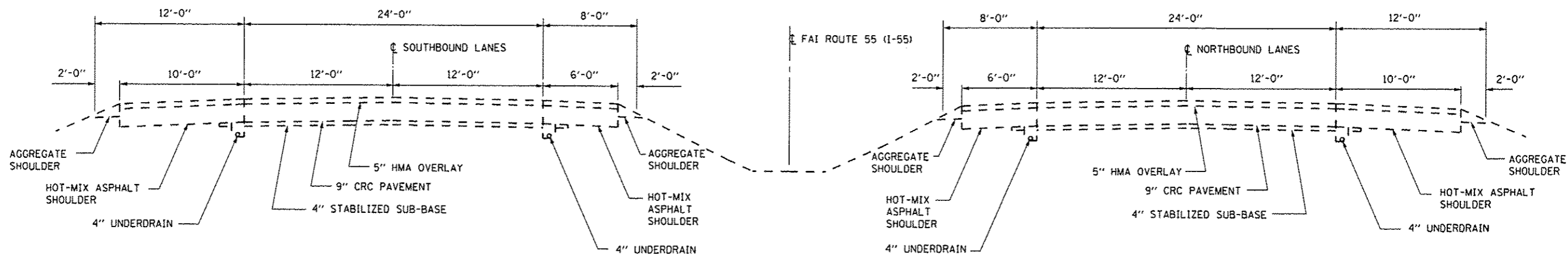
SCALE: SHEET NO. 1 OF 1 SHEETS STA. TO STA.

F.A.I. RTE.	SECTION	COUNTY	TOTAL SHEETS	SHEET NO.
55	D3 PATCHING 2014-7	LIVINGSTON	12	2
			CONTRACT NO. 66D03	
ILLINOIS FED. AID PROJECT				

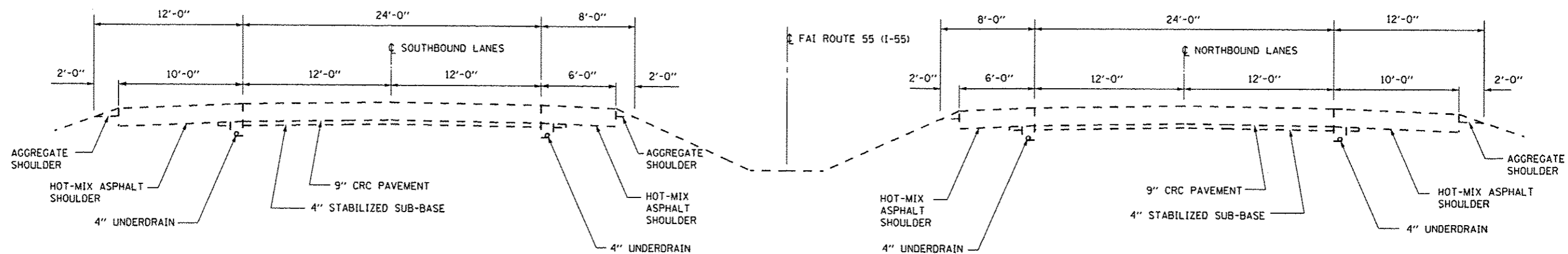
CODE NO.	ITEM	UNIT	CONSTR. CODE	
			STATE	
			100%	
			ROADWAY	
			0005	
			RURAL	
44200610	CLASS A PATCHES, TYPE II, 13 INCH	SQ YD		308
44200612	CLASS A PATCHES, TYPE III, 13 INCH	SQ YD		139
44200614	CLASS A PATCHES, TYPE IV, 13 INCH	SQ YD		213
44213000	PATCH REINFORCEMENT	SQ YD		660
44213100	PAVEMENT FABRIC	SQ YD		660
44213200	SAW CUTS	FOOT		2754
67100100	MOBILIZATION	L SUM		1
70100420	TRAFFIC CONTROL AND PROTECTION, STANDARD 701411	EACH		12
70103815	TRAFFIC CONTROL SURVEILLANCE	CAL DAY		10
* 78009004	MODIFIED URETHANE PAVEMENT MARKING LINE 4"	FOOT		495
* 78009006	MODIFIED URETHANE PAVEMENT MARKING LINE 6"	FOOT		490
X0326867	RADAR SPEED TRAILER	CAL MO		1
X0326880	MESSAGE BOARD VEHICLE DRIVER	HOURL		80
X0326907	PORTABLE, VEHICLE MOUNTED, CHANGEABLE MESSAGE SIGN	CAL MO		1
X7010805	TRAFFIC CONTROL AND PROTECTION, STANDARD 701401 (SPECIAL)	L SUM		1

15 • SPECIALITY ITEMS

FILE NAME =	USER NAME = patelvj	DESIGNED - RW	REVISED -	<b>STATE OF ILLINOIS DEPARTMENT OF TRANSPORTATION</b>	<b>SUMMARY OF QUANTITIES</b>	F.A.I. RTE.	SECTION	COUNTY	TOTAL SHEETS	SHEET NO.	
ei\pwwork\prvidat\patelvj\d0337548\0366	15-shd-details.dgn	DRAWN - RW	REVISED -			55	D3 PATCHING 2014-7	LIVINGSTON	12	3	
	PLOT SCALE = 1/80,000' / in.	CHECKED -	REVISED -			CONTRACT NO. 66003					
	PLOT DATE = 4/3/2013	DATE -	REVISED -			SCALE:	SHEET NO. 1 OF 1 SHEETS	STA.	TO STA.	[ILLINOIS] FED. AID PROJECT	



**TYPICAL SECTION  
MAINLINE**  
M.M. 187.70 TO M.M. 215.40



**TYPICAL SECTION  
MAINLINE**  
M.M. 215.40 TO M.M. 218.07

FILE NAME =	USER NAME = patelvj	DESIGNED - RW	REVISED -	<b>STATE OF ILLINOIS DEPARTMENT OF TRANSPORTATION</b>	<b>TYPICAL SECTIONS</b>				F.A.I. RTE.	SECTION	COUNTY	TOTAL SHEETS	SHEET NO.
ca\paw\work\p\p\patelvj\140337548\0366	95-sh1-details.dgn	DRAWN - RW	REVISED -		55	D3 PATCHING 2014-7	LIVINGSTON	12	4				
	PLOT SCALE = 1/8" = 1' / 1"	CHECKED -	REVISED -		CONTRACT NO. 66D03								
	PLOT DATE = 4/3/2013	DATE -	REVISED -		ILLINOIS FED. AID PROJECT								
				SCALE:	SHEET NO. 1 OF 1 SHEETS	STA.	TO STA.						



CLASS A PATCHES  
SOUTHBOUND LANES

LOCATION MILE POST	PASS LANE FEET	DRIVE LANE FEET	PASSING LANE						DRIVING LANE					
			TYPE II 13" SQ YD	TYPE III 13" SQ YD	TYPE IV 13" SQ YD	PATCH REINF. SQ YD	PAV'T FABRIC SQ YD	SAW CUTS FOOT	TYPE II 13" SQ YD	TYPE II 13" SQ YD	TYPE II 13" SQ YD	PATCH REINF. SQ YD	PAV'T FABRIC SQ YD	SAW CUTS FOOT
213.85		10							13			13	13	56
202.95		6							8			8	8	48
202.90		15								20		20	20	66
202.60		6							8			8	8	48
202.55		6							8			8	8	48
202.50		6							8			8	8	48
202.40		30									40	40	40	96
202.35		15								20		20	20	66
202.15		6							8			8	8	48
202.00		6							8			8	8	48
201.98		6							8			8	8	48
201.80		6							8			8	8	48
200.40		8							11			11	11	52
199.60		6							8			8	8	48
199.57		6							8			8	8	48
199.52		6							8			8	8	48
198.80		6							8			8	8	48
NB TOTALS		150							120	40	40	200	200	912

SCHEDULE  
PAVEMENT MARKING  
NORTHBOUND LANES

LOCATION  MILE POST	MODIFIED URETHANE PAVEMENT MARKING LINE 4"		MODIFIED URETHANE PAVEMENT MARKING LINE 6"
	FEET		FEET
	YELLOW	WHITE	WHITE
202.20		6	10
202.25		9	10
202.40		6	10
202.50		6	10
202.50		22	10
202.60		6	10
202.70		6	10
202.75		6	10
202.80		6	10
202.85		6	10
202.87		6	10
202.95		24	10
202.95		17	10
202.95		24	10
203.00		6	10
203.00		8	10
203.20		6	10
203.30		12	10
203.30		32	10
203.35		15	10
203.40		6	10
203.40		6	10
203.60		6	10
203.70		6	10
203.75		28	10
203.78		6	10
203.80		10	10
203.99		6	10
204.00		6	10
204.10		15	10
204.20		15	10
204.50		6	10
NB TOTALS		345	320

SCHEDULE  
PAVEMENT MARKING  
SOUTHBOUND LANES

LOCATION  MILE POST	MODIFIED URETHANE PAVEMENT MARKING LINE 4"		MODIFIED URETHANE PAVEMENT MARKING LINE 6"
	FEET		FEET
	YELLOW	WHITE	WHITE
213.85		10	10
202.95		6	10
202.90		15	10
202.60		6	10
202.55		6	10
202.50		6	10
202.40		30	10
202.35		15	10
202.15		6	10
202.00		6	10
201.98		6	10
201.80		6	10
200.40		8	10
199.60		6	10
199.57		6	10
199.52		6	10
198.80		6	10
SB TOTALS		150	170

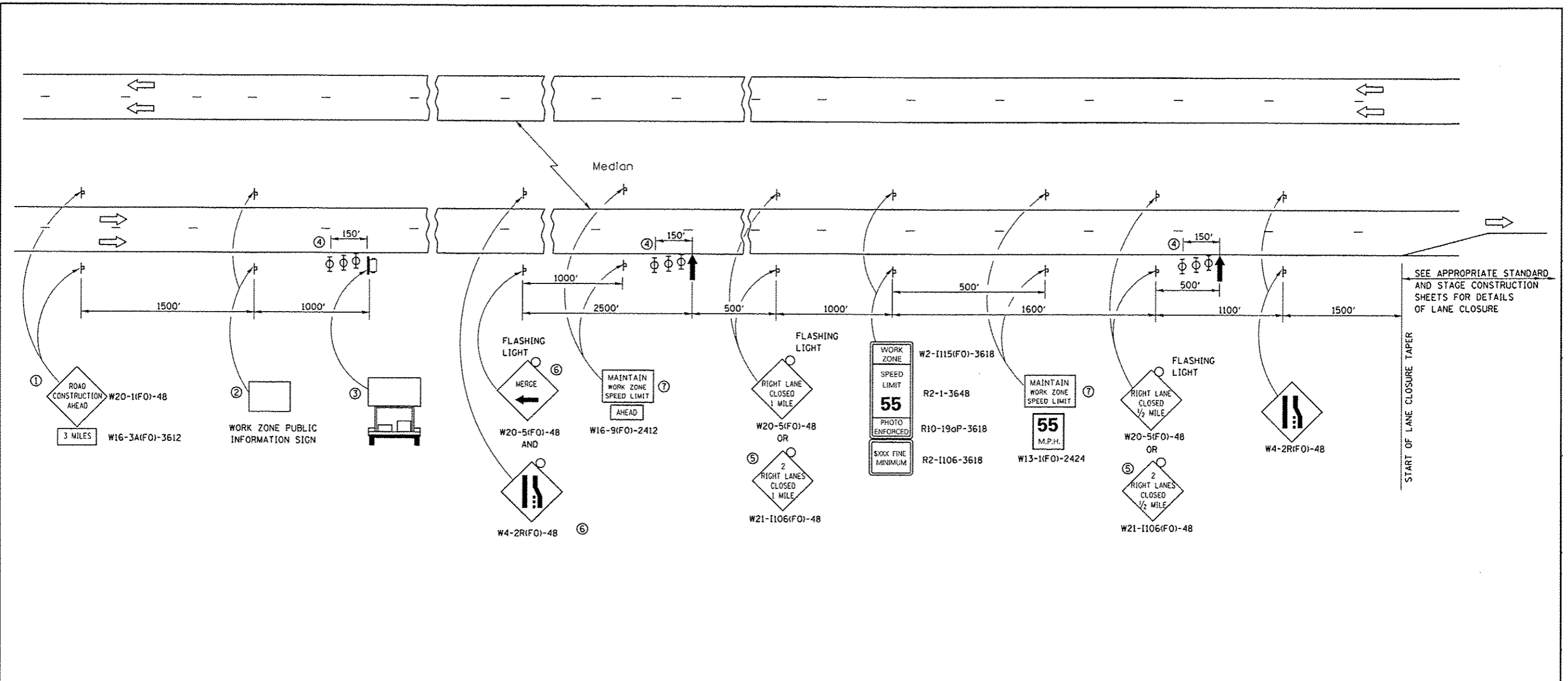
FILE NAME =	USER NAME = pccatlyj	DESIGNED - RW	REVISED -
ci:\pccatlyj\pccatlyj\08337548\0366	95-shr-details.dgn	DRAWN - RW	REVISED -
	PLOT SCALE = 1/80.0000' / in.	CHECKED -	REVISED -
	PLOT DATE = 4/3/2013	DATE -	REVISED -

STATE OF ILLINOIS  
DEPARTMENT OF TRANSPORTATION

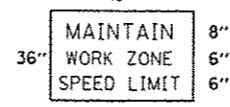
SCHEDULES

SCALE: SHEET NO. 3 OF 3 SHEETS STA. TO STA.

F.A.I. RTE.	SECTION	COUNTY	TOTAL SHEETS	SHEET NO.
55	D3 PATCHING 2014-7	LIVINGSTON	12	7
			CONTRACT NO. 66D03	
[ILLINOIS] FED. AID PROJECT				



- ① THE ROAD CONSTRUCTION AHEAD SIGN SHALL BE LOCATED 3 MILES IN ADVANCE OF THE PROJECT LIMITS.
- ② THE MESSAGE AND SIZE OF THE WORK ZONE PUBLIC INFORMATION SIGN SHALL BE AS SPECIFIED BY THE DEPARTMENT.
- ③ TO BE PLACED IN THE MEDIAN WHEN FEASIBLE. THE MESSAGE BOARD SHALL BE USED TO DISPLAY STATUS OF LANES WITHIN THE PROJECT. THE PRIMARY MESSAGES SHALL BE:  
"RIGHT LANE CLOSED" / " x MILES AHEAD"  
"LEFT LANE CLOSED" / " x MILES AHEAD"  
"ALL LANES OPEN"
- ④ THREE, TYPE II BARRICADES, DRUMS, OR VERTICAL BARRICADES AT 50' CENTERS.
- ⑤ THIS SIGN SHALL BE USED WHEN 2 LANES ARE CLOSED.
- ⑥ WHEN THE LEFT LANE IS CLOSED, SWITCH THESE TWO SIGNS AND THE DIRECTION OF THE MERGE ARROW.
- ⑦ 48"x36" FLUORESCENT ORANGE SIGN WITH BLACK LETTERS.



- ↑ ARROW BOARD
- ▭ PORTABLE CHANGEABLE MESSAGE SIGN
- ⊥ SIGN
- ⊕ TYPE II BARRICADE, DRUM, OR VERTICAL BARRICADE WITH MONODIRECTIONAL FLASHING LIGHT

**GENERAL NOTE:**

THIS STANDARD IS USED WHERE AT ANY TIME A LANE IS CLOSED ON A FREEWAY/EXPRESSWAY.

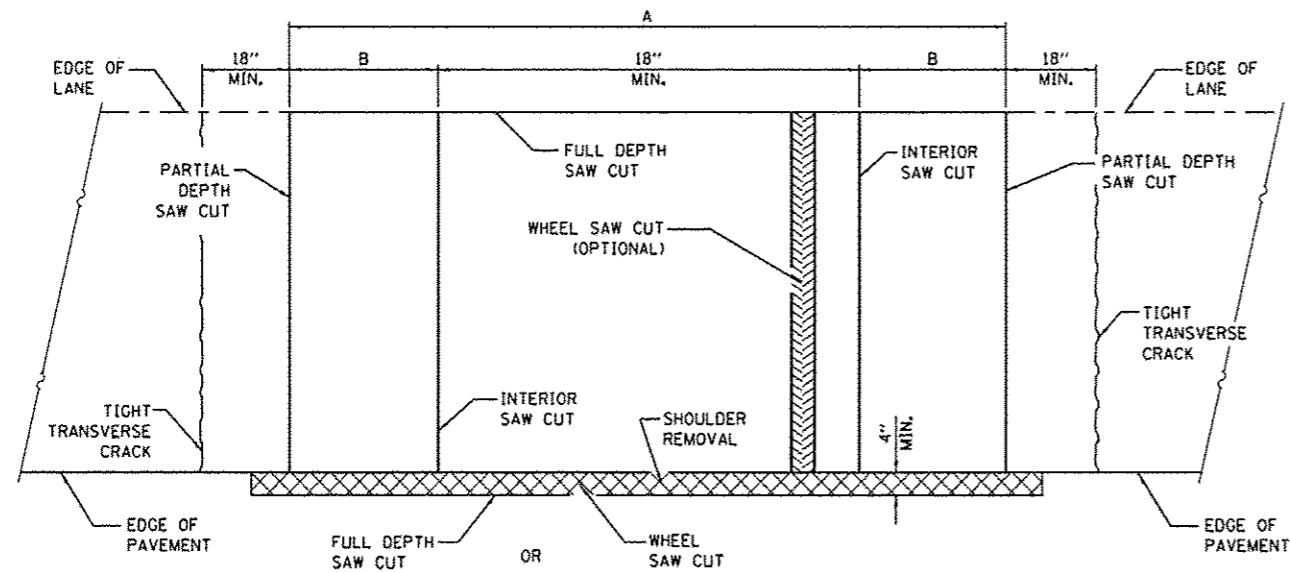
WHEN THE LEFT LANE IS CLOSED, LEFT LANE CLOSED SIGNS SHALL BE SUBSTITUTED FOR THE RIGHT LANE CLOSED SIGNS.

THE FIRST TWO SIGNS AND THE MESSAGE BOARD ARE STATIONARY. THE OTHER SIGNS AND ARROWBOARDS SHALL BE MOVED AS NECESSARY TO MAINTAIN THE REQUIRED DISTANCE FROM THE START OF THE LANE CLOSURE TAPER(S).

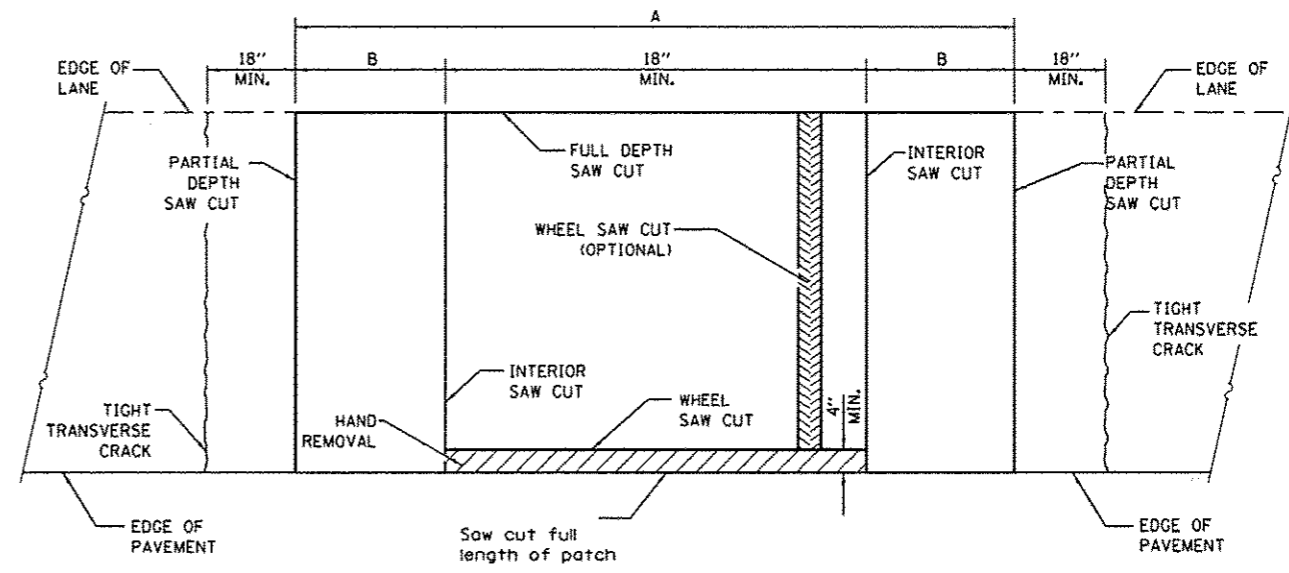
SEE SPECIAL PROVISIONS.

FILE NAME =	USER NAME = patelijj	DESIGNED - RW	REVISED -	<b>STATE OF ILLINOIS DEPARTMENT OF TRANSPORTATION</b>	<b>TRAFFIC CONTROL AND PROTECTION STANDARD 701400 (SPECIAL)</b>	F.A.I. RTE.	SECTION	COUNTY	TOTAL SHEETS	SHEET NO.
ca:\pwork\pwork\patelijj\0337548\0356895-ah1-details.dgn		DRAWN - RW	REVISED -			55	D3 PATCHING 2014-7	LIVINGSTON	12	8
PLOT SCALE = 1/8"=1'-0"		CHECKED -	REVISED -			CONTRACT NO. 66D03				
PLOT DATE = 4/3/2013		DATE -	REVISED -			ILLINOIS FED. AID PROJECT				

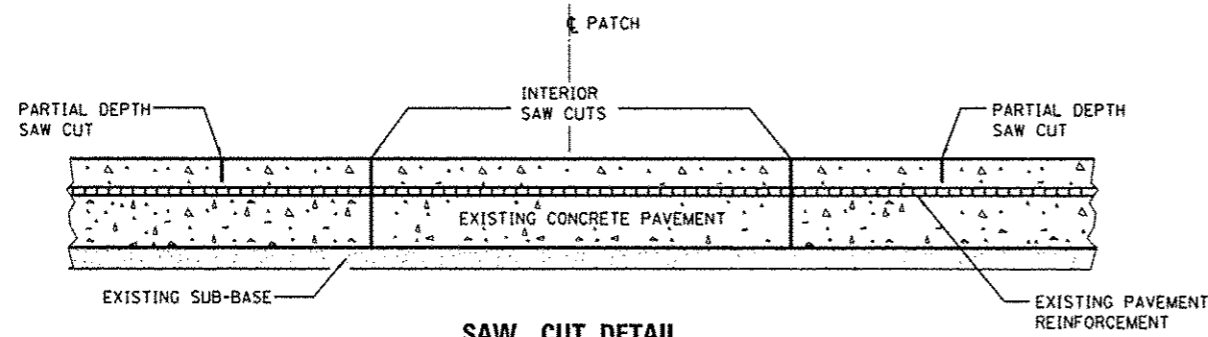




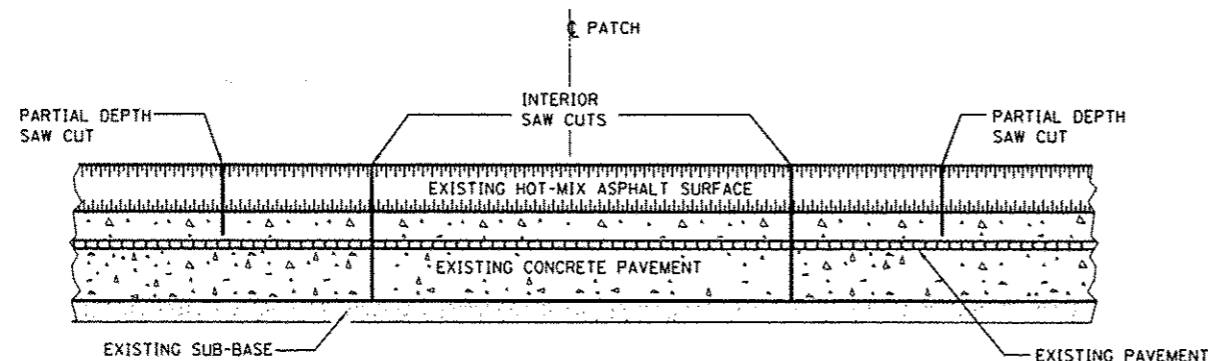
**PAVEMENT SAWING DETAIL**  
(HMA SHOULDER)



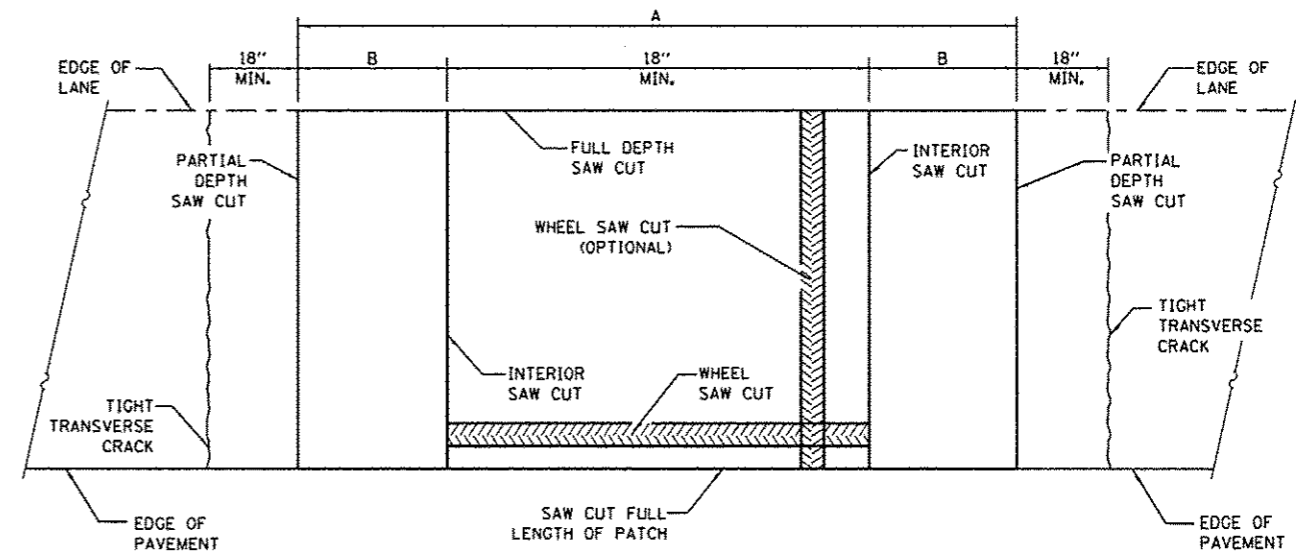
**PAVEMENT SAWING DETAIL**  
(PCC SHOULDER)



**SAW CUT DETAIL**  
WITHOUT HMA SURFACE



**SAW CUT DETAIL**  
WITH HMA SURFACE



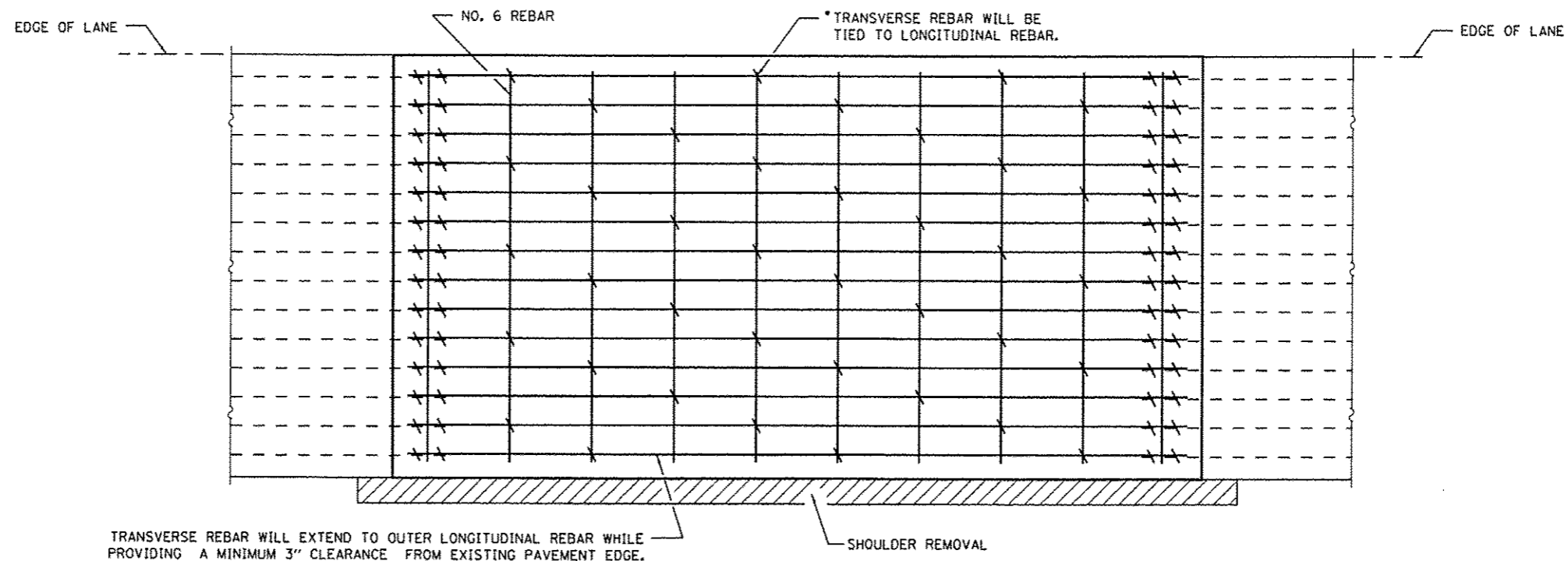
**ALTERNATE SAWING DETAIL**  
(PCC SHOULDER)

EXISTING REINFORCEMENT BARS	A (MIN.)	B (MIN.)	C (MIN.)
#5	4'-6"	18"	16"
#6	5'-0"	21"	19"
#7	5'-6"	24"	22"
FABRIC	5'-0"	21"	18"

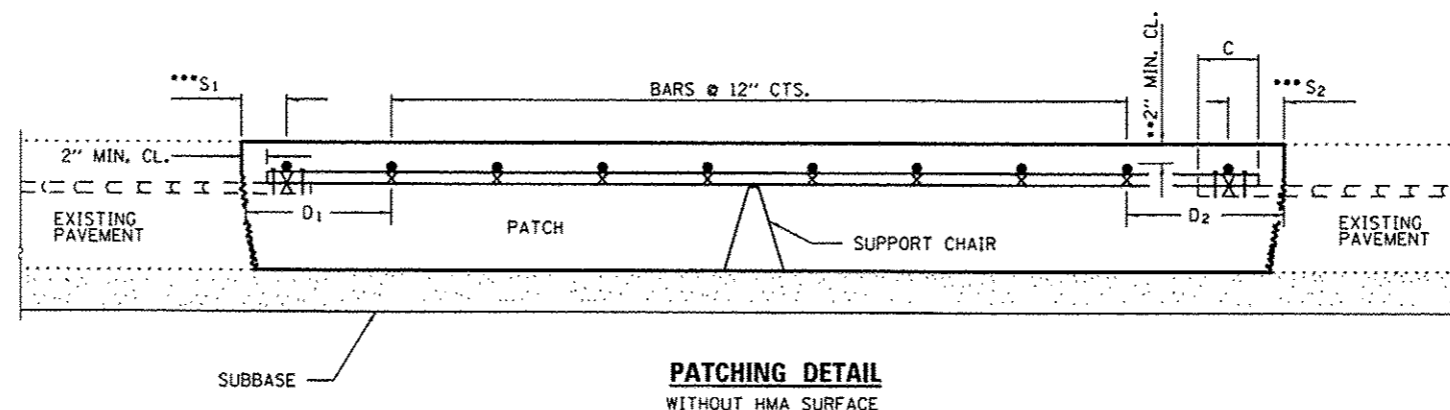
**GENERAL NOTES**

WHEN PATCHING TWO ADJACENT LANES IN ONE OPERATION THE LONGITUDINAL JOINT SHALL BE LONGITUDINAL SAWED JOINT AS DETAILED ON STANDARD 420001, HOWEVER, THE GROOVE MAYBE EITHER PREFORMED OR SAWED.

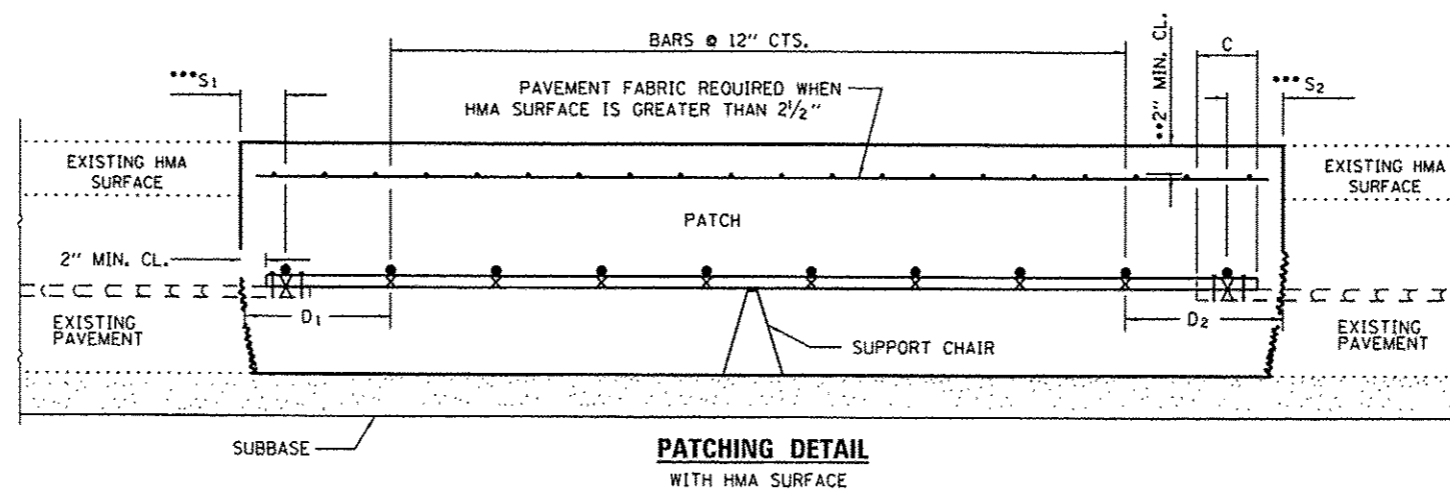
SEE STANDARD 421001 FOR DETAILS OF PAVEMENT REINFORCEMENT.



**PAVEMENT REINFORCEMENT DETAIL**



**PATCHING DETAIL  
WITHOUT HMA SURFACE**



**PATCHING DETAIL  
WITH HMA SURFACE**

- EVERY 3rd INTERSECTION MUST BE TIED.
- WHEN THE MINIMUM CLEARANCE CANNOT BE OBTAINED WITH THE TRANSVERSE REBAR ON TOP, THEN THE TRANSVERSE REBAR SHALL BE TIED TO THE BOTTOM OF THE LONGITUDINAL REBAR.
- VARIABLES: WHERE  $S_1$  AND  $S_2$  ARE  $2\frac{1}{2}$ " MIN. AND 12" MAX.  $D_1 = 2(S_1)$  AND  $D_2 = 2(S_2)$ .

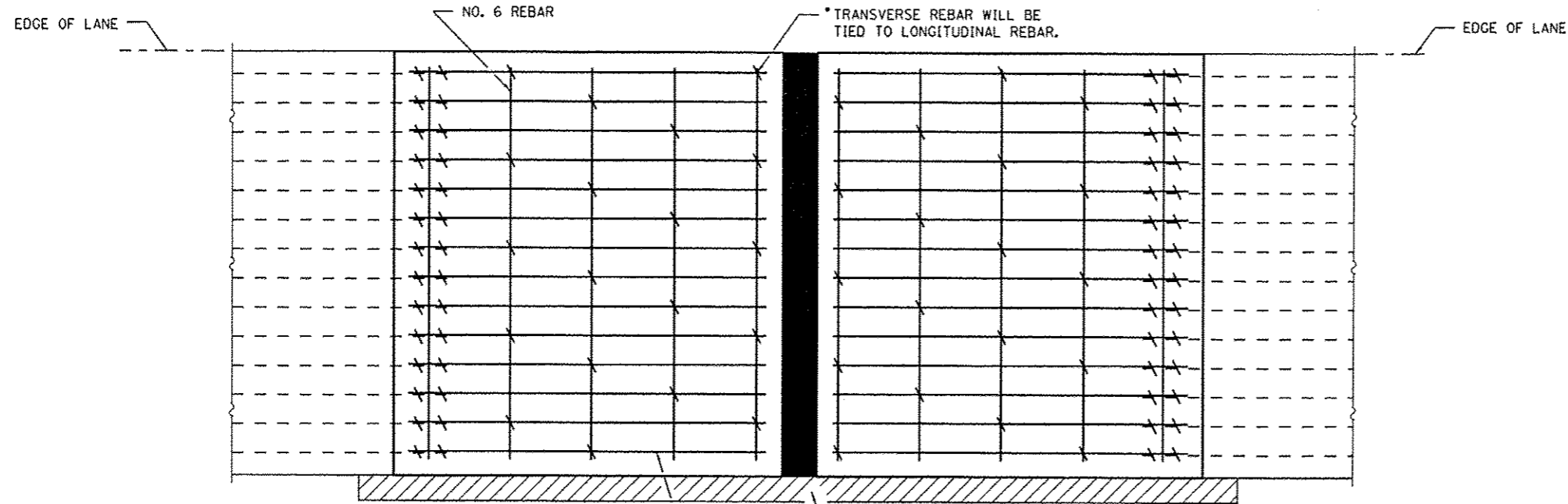
FILE NAME =	USER NAME = patelij	DESIGNED - RW	REVISED -
c:\pav_work\pav\dot\patelij\4033754\0\0366	95-shr-detail.dgn	DRAWN - RW	REVISED -
	PLOT SCALE = 100.0000 1 / in.	CHECKED -	REVISED -
	PLOT DATE = 4/3/2013	DATE -	REVISED -

STATE OF ILLINOIS  
DEPARTMENT OF TRANSPORTATION

**CLASS A PATCHES  
CONSTRUCTION DETAILS**

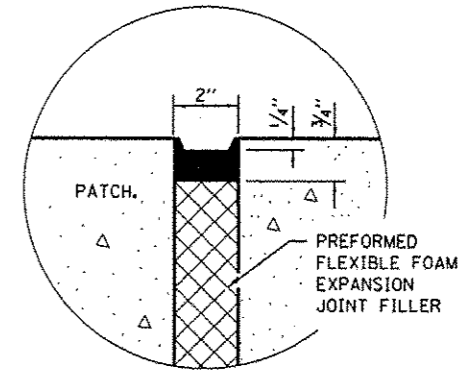
SCALE: SHEET NO. 1 OF 1 SHEETS STA. TO STA.

F.A.T. RTE.	SECTION	COUNTY	TOTAL SHEETS	SHEET NO.
55	D3 PATCHING 2014-7	LIVINGSTON	12	10
CONTRACT NO. 66003				
ILLINOIS FED. AID PROJECT				

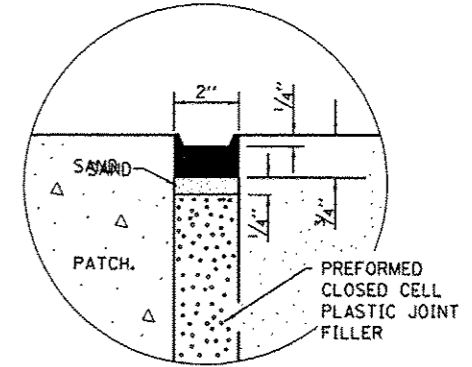


TRANSVERSE REBAR WILL EXTEND TO OUTER LONGITUDINAL REBAR WHILE PROVIDING A MINIMUM 3" CLEARANCE FROM EXISTING PAVEMENT EDGE.

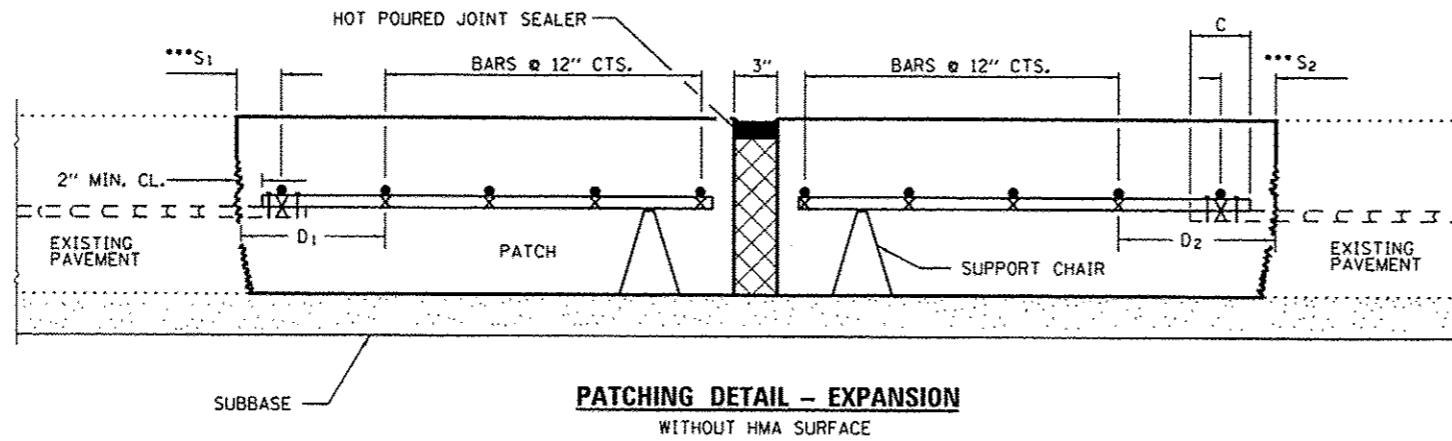
**PAVEMENT REINFORCEMENT DETAIL**



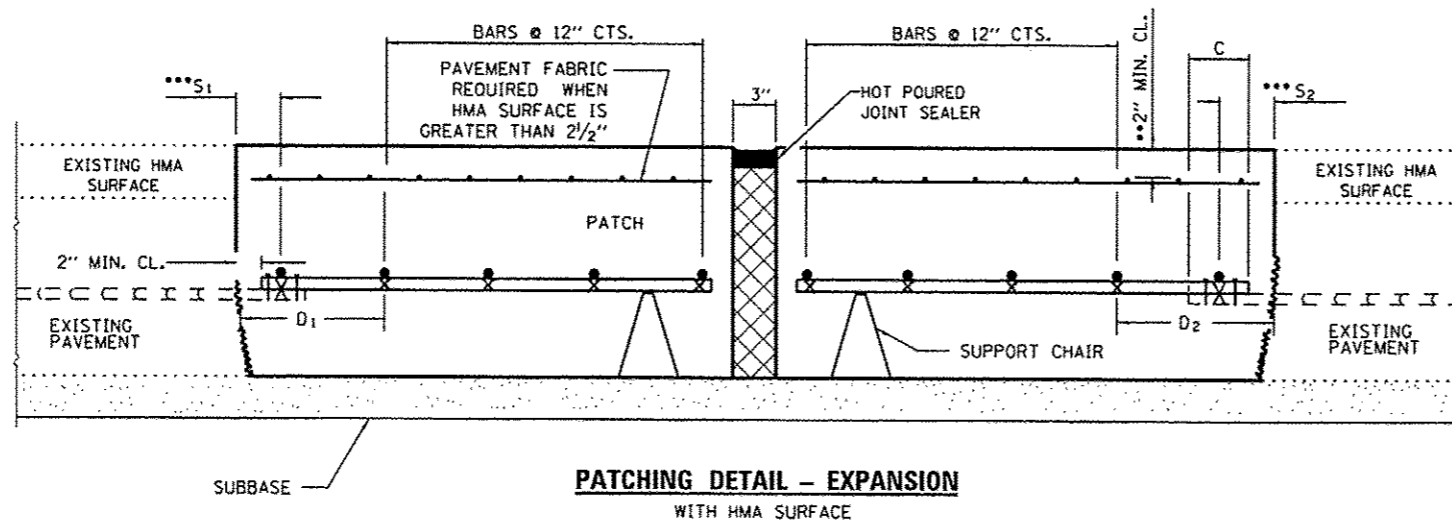
**SEALING DETAIL**



**SEALING DETAIL**



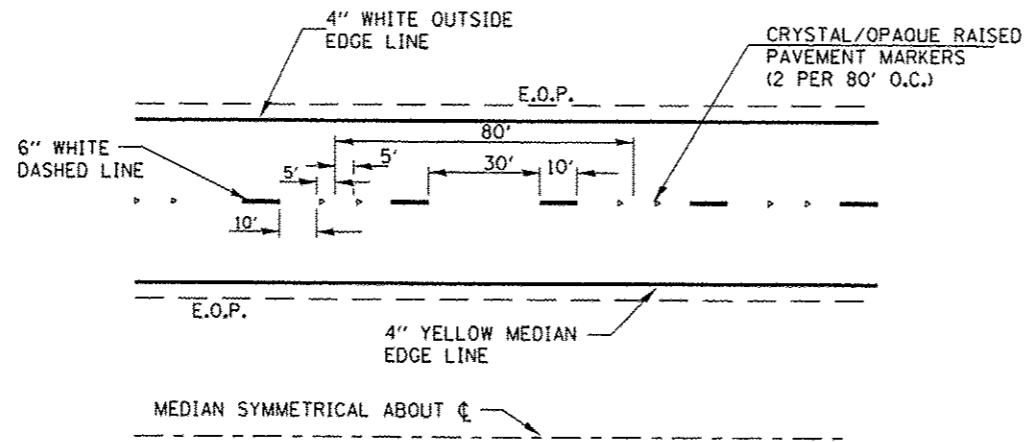
**PATCHING DETAIL - EXPANSION WITHOUT HMA SURFACE**



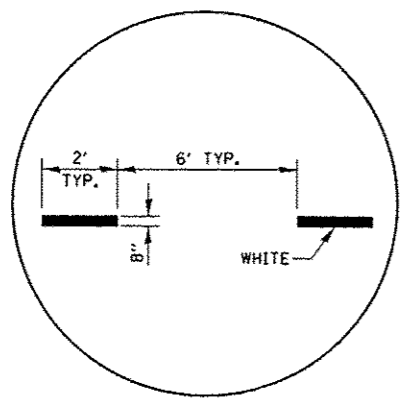
**PATCHING DETAIL - EXPANSION WITH HMA SURFACE**

- EVERY 3rd INTERSECTION MUST BE TIED.
- WHEN THE MINIMUM CLEARANCE CANNOT BE OBTAINED WITH THE TRANSVERSE REBAR ON TOP, THEN THE TRANSVERSE REBAR SHALL BE TIED TO THE BOTTOM OF THE LONGITUDINAL REBAR.
- VARIABLES: WHERE  $S_1$  AND  $S_2$  ARE  $2\frac{1}{2}$ " MIN. AND 12" MAX.  $D_1 = 2(S_1)$  AND  $D_2 = 2(S_2)$ .

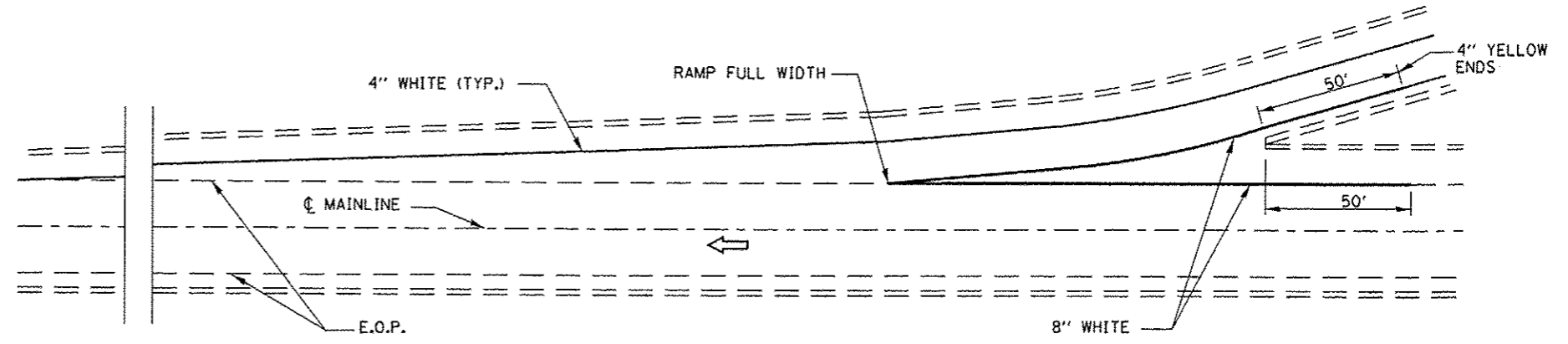
FILE NAME =	USER NAME = petelyj	DESIGNED - RW	REVISED -	<b>STATE OF ILLINOIS DEPARTMENT OF TRANSPORTATION</b>	<b>CLASS A PATCHES CONSTRUCTION DETAILS (EXPANSION)</b>		F.A.I. RTE. 55	SECTION 03 PATCHING 2014-7	COUNTY LIVINGSTON	TOTAL SHEETS 12	SHEET NO. 11	
c:\pawork\pawork\petelyj\140337548\0366495-sht-details.dgn	95-sht-details.dgn	DRAWN - RW	REVISED -		SCALE: 1/8" = 1'-0"	SHEET NO. 1 OF 1 SHEETS	STA. TO STA.	CONTRACT NO. 66D03		ILLINOIS FED. AID PROJECT		
		CHECKED -	REVISED -									
		DATE -	REVISED -									



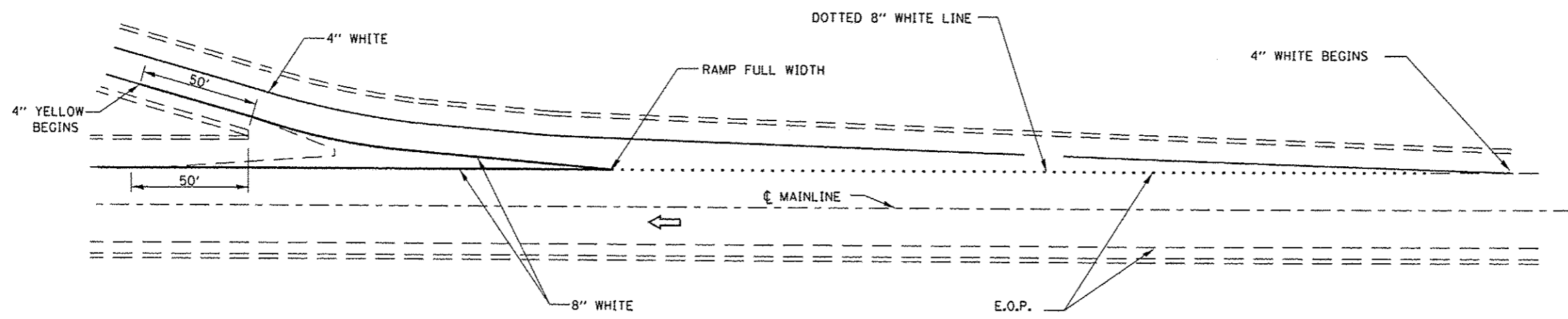
**TYPICAL PAVEMENT MARKINGS**



**INTERSTATE RAMP TRANSITION LINE**



**TYPICAL PAVEMENT MARKING FOR ENTRANCE RAMP TERMINALS**



**TYPICAL PAVEMENT MARKINGS FOR EXIT RAMP TERMINALS**

FILE NAME -	USER NAME - pateljj	DESIGNED - RW	REVISED -	<b>STATE OF ILLINOIS DEPARTMENT OF TRANSPORTATION</b>	<b>TYPICAL PAVEMENT MARKING</b>		F.A.I. RTE.	SECTION	COUNTY	TOTAL SHEETS	SHEET NO.
ci\p\work\p\idat\pateljj\d0337548\0366495.sht-detail.dgn	PLOT SCALE = 100.0000' / in.	DRAWN - RW	REVISED -				55	D3 PATCHING 2014-7	LIVINGSTON	12	12
	PLOT DATE = 4/3/2013	CHECKED -	REVISED -		SCALE: SHEET NO. 1 OF 1 SHEETS STA. TO STA.		CONTRACT NO. 66D03				
		DATE -	REVISED -		ILLINOIS FED. AID PROJECT						