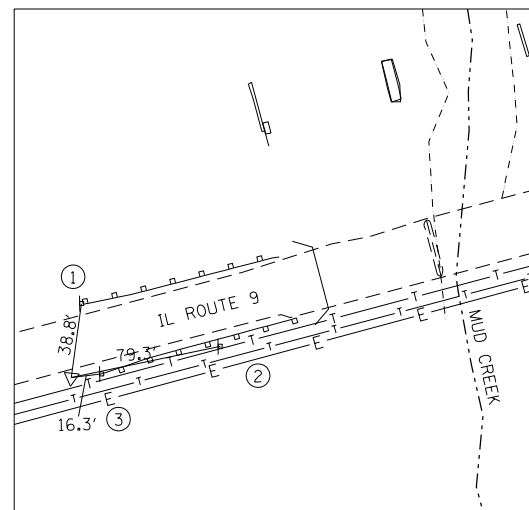


#PENTBLLS

#PLTDVRS

#SYSPRINTER_NAME

\\S:\IT_9_OVER_MUD_CREEK\CIVIL\CADD_Sheets\0468757-plt-11a.dgn

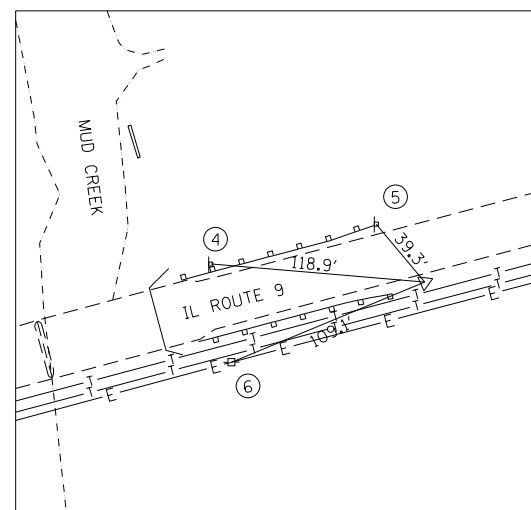


CONTROL POINT #1002

CONTROL POINT 1002 IS AN IRON ROD LOCATED ON THE SOUTH SHOULDER OF IL ROUTE 9 WEST OF THE MUD CREEK BRIDGE.

N = 1403543.27 STA. 647+33.64
E = 2505589.52 16.48' RT

1. SIGN BY NORTH GUARDRAIL
2. SIGN ON SOUTH SHOULDER OF IL 9
3. SIGN BY SOUTH GUARDRAIL

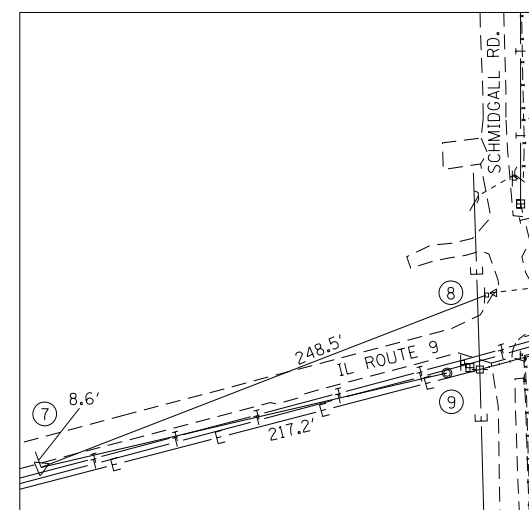


CONTROL POINT #1006

CONTROL POINT #1006 IS AN IRON ROD LOCATED ON THE SOUTH SHOULDER OF IL ROUTE 9 EAST OF THE MUD CREEK BRIDGE.

N = 1403644.25 STA. 651+34.17
E = 2505977.12 16.82' RT

4. SIGN ON NORTH SHOULDER
5. SIGN BY NORTH GUARDRAIL
6. ELECTRIC POWER POLE ON SOUTH SIDE OF IL 9

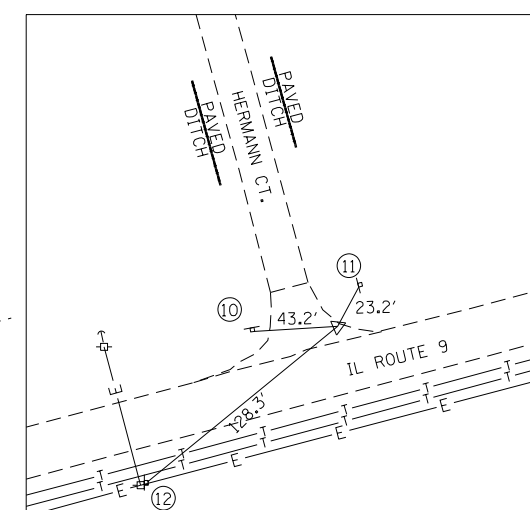


CONTROL POINT #1007

CONTROL POINT #1007 IS AN IRON ROD LOCATED ON THE SOUTH SHOULDER OF IL ROUTE 9 APPROXIMATELY 497' WEST OF THE CENTER LINE OF SCHMIDGALL ROAD.

N = 1403745.44 STA. 655+34.91
E = 2506364.87 16.93' RT

7. TO CENTERLINE OF IL 9
8. SIGN AT NW INT. OF SCHMIDGALL AND IL 9
9. MANHOLE NEAR SW INT. OF SCHMIDGALL AND IL 9



CONTROL POINT #1001

CONTROL POINT #1001 IS A MAG NAIL ON THE EAST CORNER OF THE INTERSECTION OF IL ROUTE 9 AND HERMANN CT.

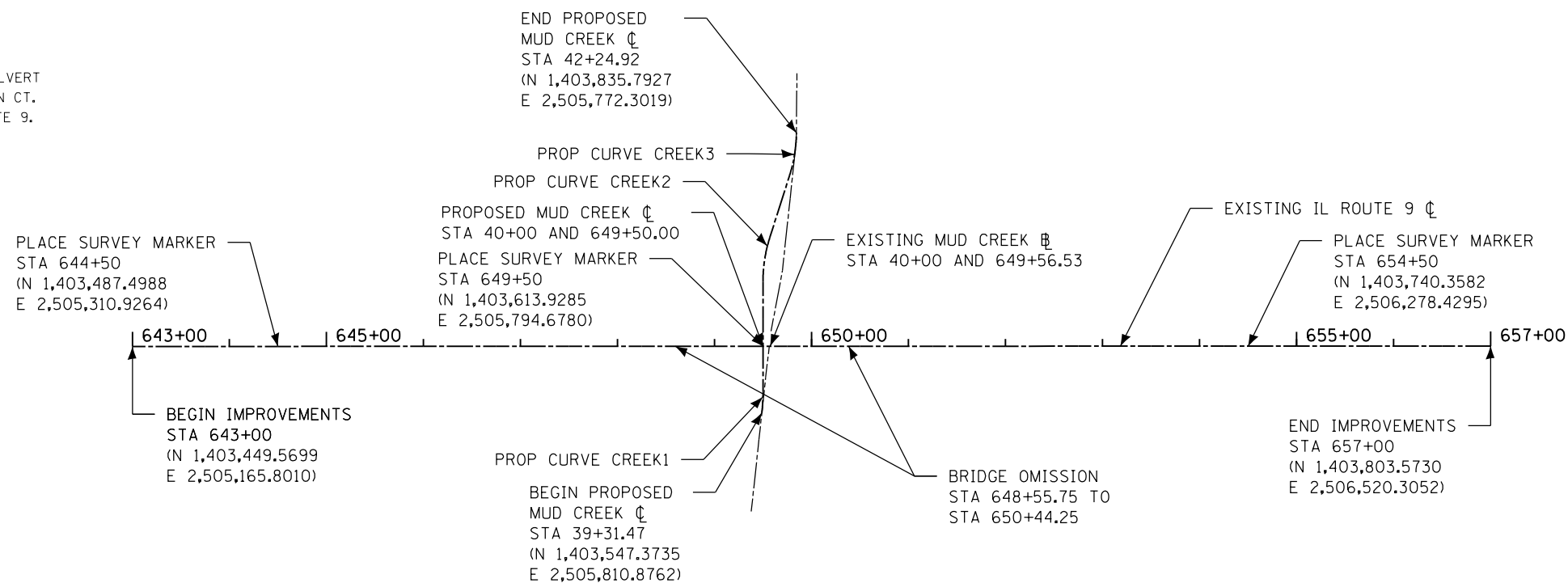
N = 1403334.91 STA. 637+61.94
E = 2504639.61 21.78' LT

10. SIGN AT WEST SIDE OF INT. OF HERMANN AND IL 9
11. SIGN ON EAST SIDE OF INT. OF HERMANN AND IL 9
12. SIGN NEXT TO POWER POLE WEST OF HERMANN ON SOUTH SIDE OF IL 9



BENCHMARK NUMBER 1
U.S. COAST AND GEODETIC SURVEY BRASS DISK SET IN TOP OF THE SOUTH WEST WING WALL OF THE STATE ROUTE 9 BRIDGE OVER MUD CREEK.
ELEVATION 578.58'

BENCHMARK NUMBER 2
CHISELED CROSS ON TOP OF THE 15' CULVERT LOCATED ON THE EAST SIDE OF HERMANN CT. 385' NORTH OF THE C.L. OF STATE ROUTE 9.
ELEVATION 580.43'



PROP. CURVE CREEK1 PI STA. = 39+42.24 Δ = 6° 09' 48" (LT) D = 28° 38' 52" R = 200.00' T = 10.77' L = 21.51' E = 0.29' e = N/A T.R. = N/A S.E. RUN = N/A P.C. STA. = 39+31.47 P.T. STA. = 39+52.98	PROP. CURVE CREEK3 PI STA. = 42+02.71 Δ = 17° 05' 35" (LT) D = 38° 11' 50" R = 150.00' T = 22.54' L = 44.75' E = 1.68' e = N/A T.R. = N/A S.E. RUN = N/A P.C. STA. = 41+80.17 P.T. STA. = 42+24.92
---	--

PROP. CURVE CREEK2
PI STA. = 40+90.00
Δ = 17° 37' 37" (RT)
D = 38° 11' 50"
R = 150.00'
T = 23.26'
L = 46.15'
E = 1.79'
e = N/A
T.R. = N/A
S.E. RUN = N/A
P.C. STA. = 40+66.74
P.T. STA. = 41+12.89



USER NAME = TERRA	DESIGNED - CL	REVISED -
	DRAWN - KJC	REVISED -
PLOT SCALE = N/A	CHECKED - LVA	REVISED -
PLOT DATE = 1/23/2013	DATE - 01/25/13	REVISED -

STATE OF ILLINOIS
DEPARTMENT OF TRANSPORTATION

SURVEY TIE SHEET
IL 9 OVER MUD CREEK

SCALE: N/A SHEET NO. 1 OF 1 SHEETS STA. TO STA.

F.A.P. RTE.	SECTION	COUNTY	TOTAL SHEETS	SHEET NO.
693	(119BR) BR	TAZEWELL	80	19
CONTRACT NO. 68757				
ILLINOIS FED. AID PROJECT				