

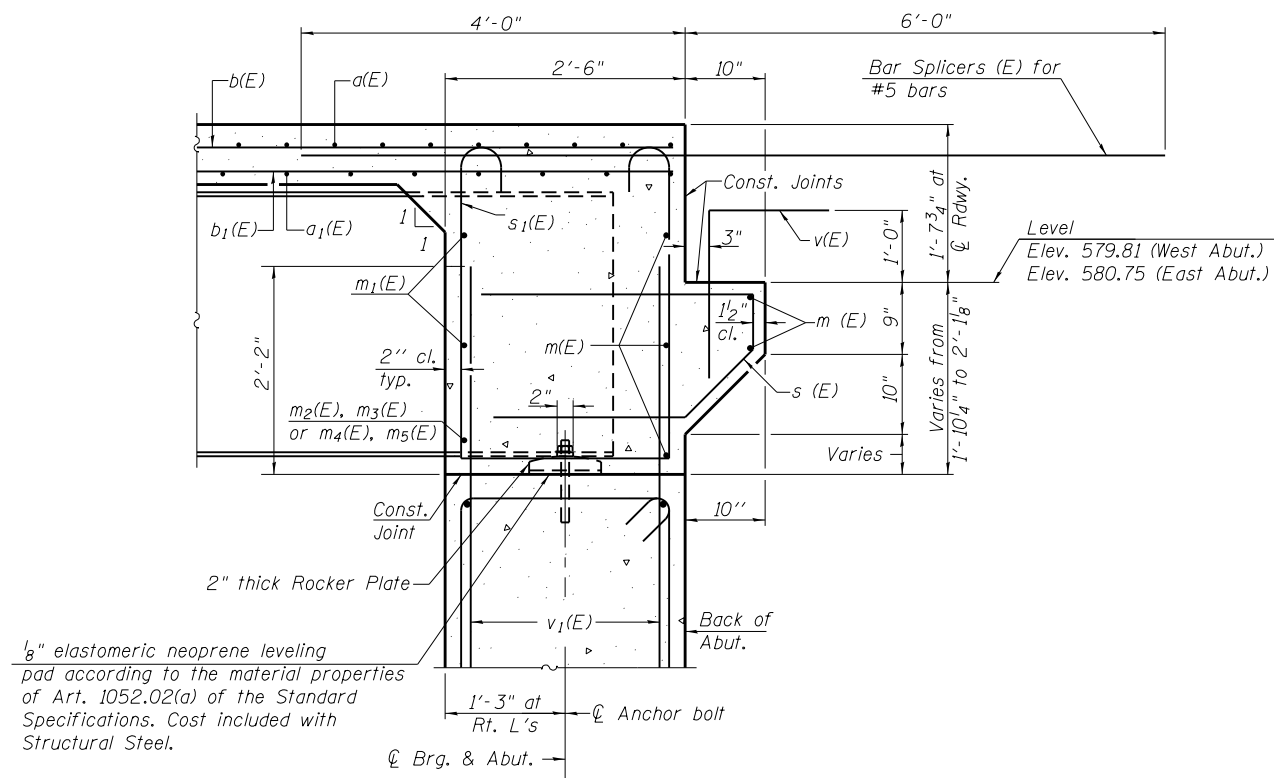
DIAPHRAGM ELEVATION AT ABUTMENT

(East Diaphragm shown, looking East, West diaphragm similar)

Notes:
 Reinforcement bars in diaphragm are billed with superstructure on sheet S12 of S25.
 Concrete in diaphragm is included with Concrete Superstructure on sheet S12 of S25.
 For details of bars s(E) & s1(E) see sheet S12 of S25.
 The s(E) and s1(E) bars shall be placed parallel to the beams. Spacing for these bars shall be at right angles to the beams.

MIN. BAR LAP

#6 bar = 3'-4"



SECTION A-A

(Dimensions at right angles to abutment)

MAIL RT. 9 OVER ROAD CREEK/CIVIL/CADD Sheets/Structural/Files/Plots/SHT/0468757-013-Diaphragm.dgn

TERRA ENGINEERING LTD.
 225 W. OHIO ST., FOURTH FL.
 CHICAGO, IL 60664
 W(312)467-0123 F(312)467-0220
 www.terraengineering.com

USER NAME = cvm
 FILE NAME = D468757-013-Diaphragm.dgn
 PLOT SCALE = 4:0 1" / 16"
 PLOT DATE = 1/21/2013

DESIGNED - OY
 CHECKED - DA
 DRAWN - CM
 CHECKED - JB

REVISED -
 REVISED -
 REVISED -
 REVISED -

**STATE OF ILLINOIS
 DEPARTMENT OF TRANSPORTATION**

**INTEGRAL ABUTMENT DIAPHRAGM DETAILS
 STRUCTURE NO. 090 - 0178**

SHEET NO. S13 OF S26 SHEETS

F.A. RTE.	SECTION	COUNTY	TOTAL SHEETS	SHEET NO.
693	(119BR) BR	TAZEWELL	80	53
CONTRACT NO. 68757				

ILLINOIS FED. AID PROJECT