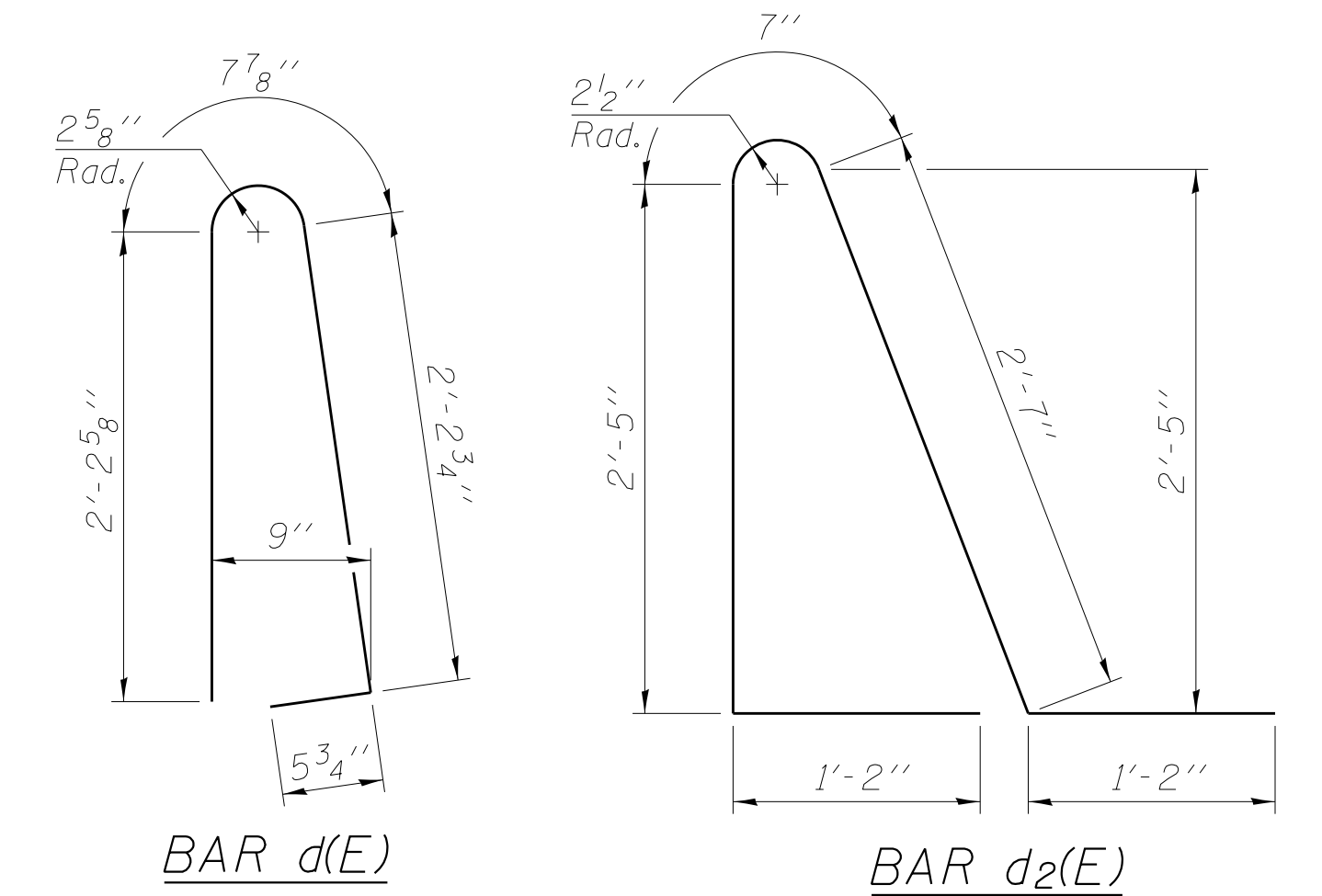
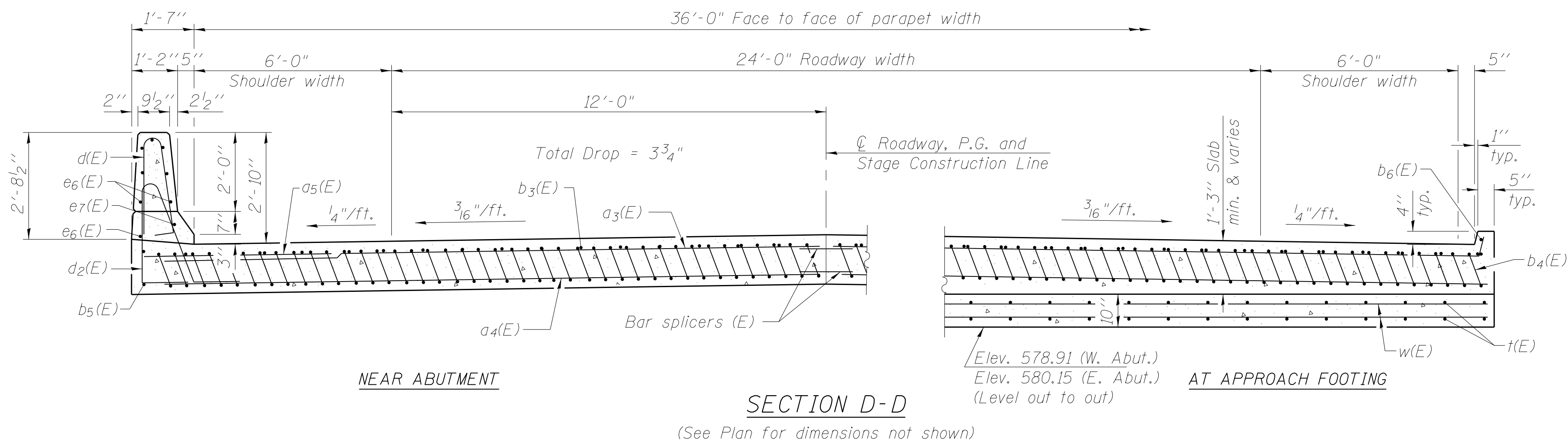


Notes:
 See sheet S14 of S26 for Detail A and View B-B.
 Approach slab and parapet concrete shall be paid for as Concrete Superstructure.
 Approach footing concrete shall be paid for as Concrete Structures.
 Reinforcement shall be paid for as Reinforcement Bars, Epoxy Coated.
 For v(E) bar details, see sheets S12 & S13 of S26.
 The approach footing maximum applied service bearing pressure (Q_{max}) = 2.0 ksf.
 For bar splicer details, see sheet S23 of S26.
 Cost of excavation for approach footing included with Concrete Structures.
 For Granular Backfill for Structures and drainage treatment details, see sheet S02 of S26.
 For additional parapet details, see sheet S12 of S26.



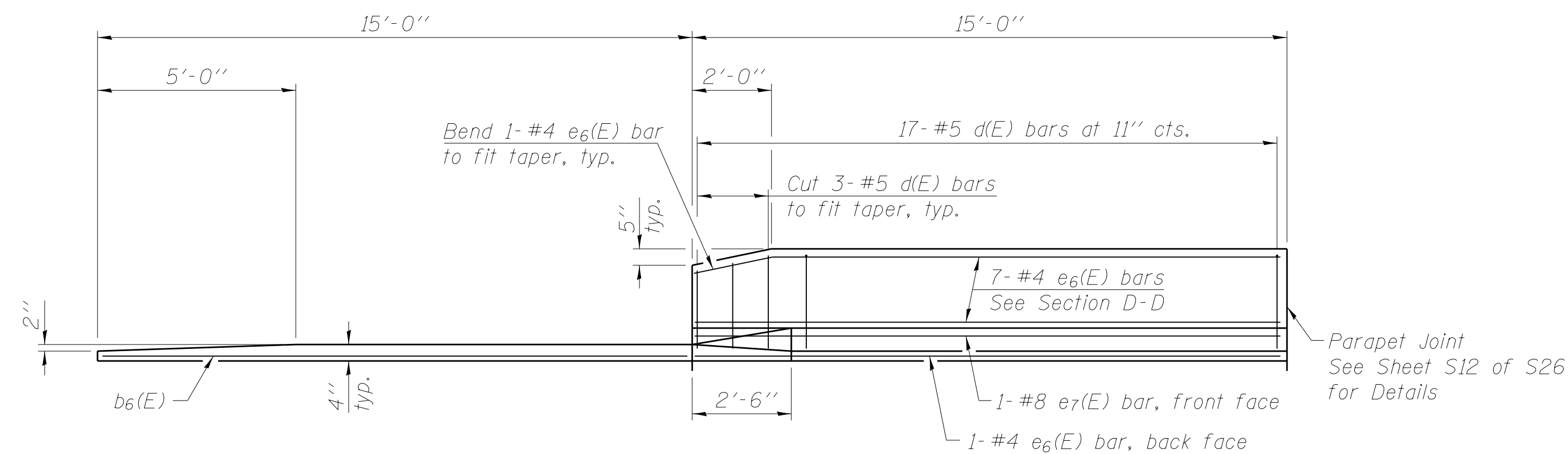
* Tilt #9 b4(E) bars as required to maintain clearance.
 *** Cost included with Concrete Superstructure.



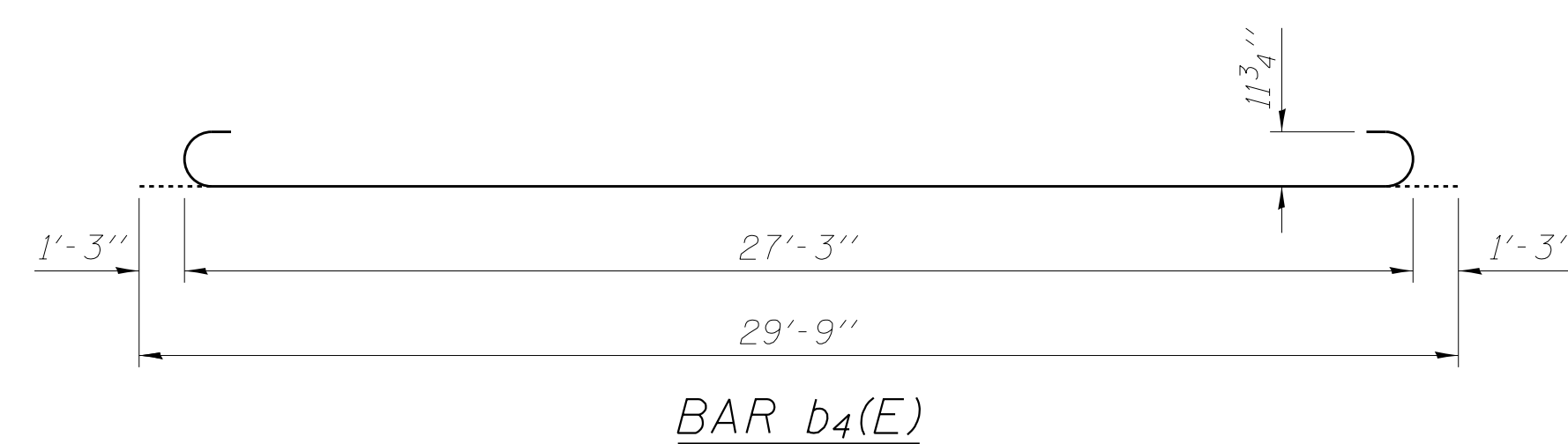
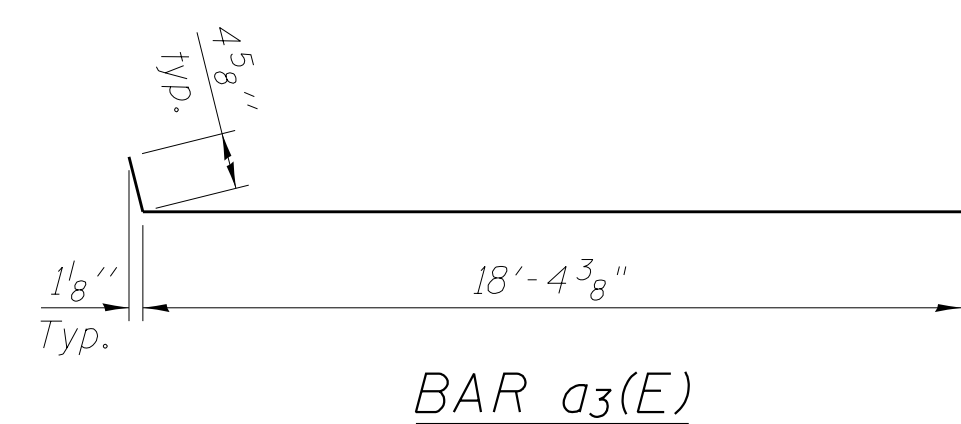
NEAR ABUTMENT

SECTION D-D

(See Plan for dimensions not shown)



VIEW E-E



TWO APPROACHES
 BILL OF MATERIAL

Bar	No.	Size	Length	Shape
a3(E)	100	#4	18'-9"	U
a4(E)	184	#5	18'-8"	U
a5(E)	48	#6	6'-6"	U
b3(E)	64	#4	29'-8"	U
b4(E)	180	#9	29'-9"	U
b5(E)	4	#4	14'-8"	U
b6(E)	4	#4	14'-7"	U
d(E)	68	#5	5'-7"	U
d2(E)	68	#5	7'-11"	U
e6(E)	32	#4	14'-8"	U
e7(E)	4	#8	14'-8"	U
t(E)	160	#4	9'-8"	U
w(E)	160	#5	18'-8"	U
Concrete Superstructure		Cu. Yd.	117.1	
Concrete Structures		Cu. Yd.	23.4	
Reinforcement Bars, Epoxy Coated		Pound	30,440	

(Sheet 2 of 2)