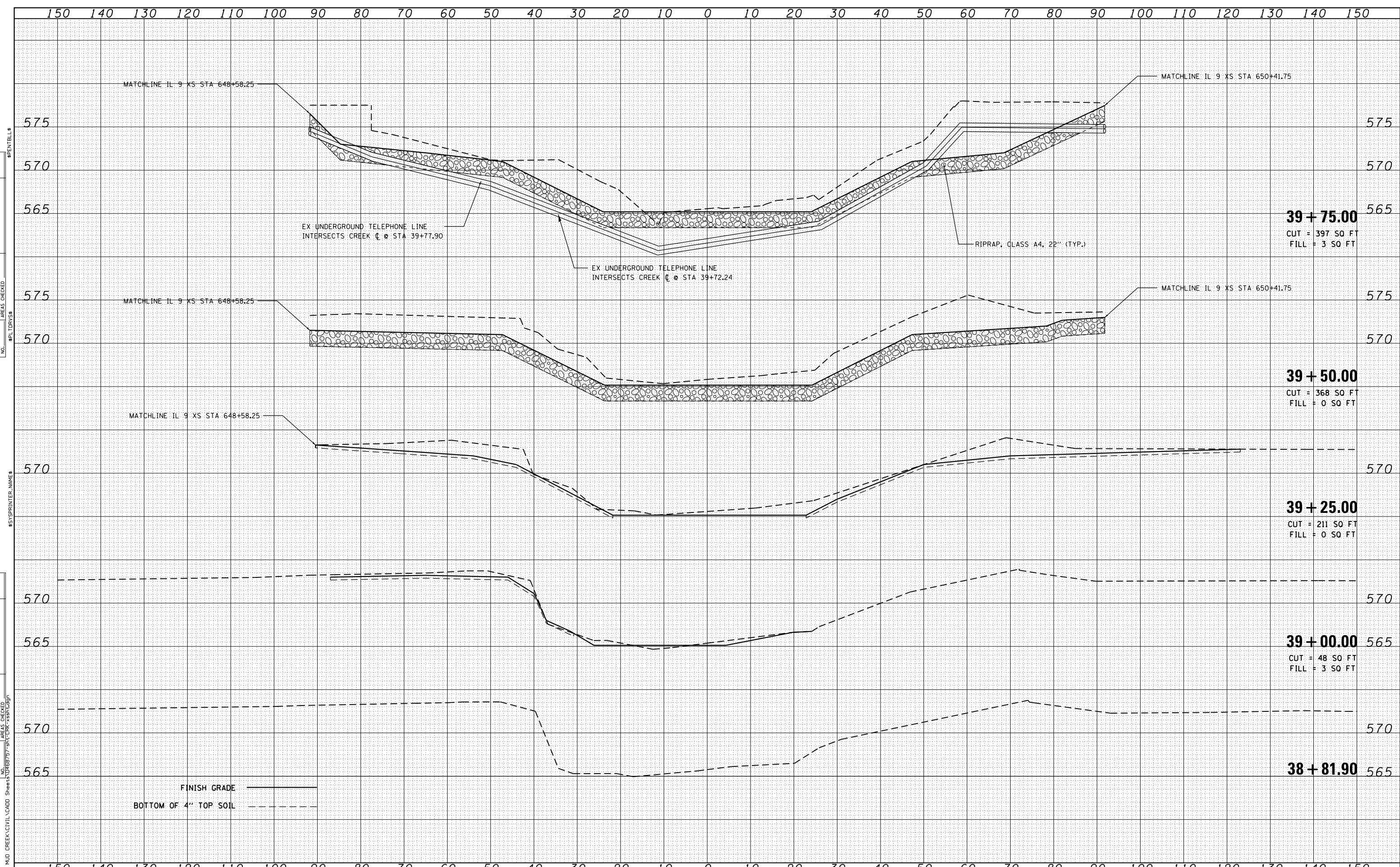


DATE	
BY	
FINISHED SURVEY	
PLOTTED	
TEMPLATE	
AREAS CHECKED	
NO.	

DATE	
BY	
ORIGINAL SURVEY	
PLOTTED	
TEMPLATE	
AREAS CHECKED	
NO.	



MAIL RT 9 OVER MUD CREEK CIVIL/CADD Sheets 68757, 68758, 68759, 68760

USER NAME - TERRA	DESIGNED - CL	REVISED -
	DRAWN - KJC	REVISED -
PLOT SCALE = 1"=10'	CHECKED - LVA	REVISED -
PLOT DATE = 1/23/2013 11:22:11 AM	DATE - 01/25/13	REVISED -

**STATE OF ILLINOIS
DEPARTMENT OF TRANSPORTATION**

**MUD CREEK CROSS SECTIONS
IL 9 OVER MUD CREEK**

SCALE: 1"=10' SHEET NO. 1 OF 4 SHEETS STA. 38+81.90 TO STA. 39+75.00

F.A.P. RTE.	SECTION	COUNTY	TOTAL SHEETS	SHEET NO.
693	(119BR) BR	TAZEWELL	80	77
			CONTRACT NO. 68757	
ILLINOIS FED. AID PROJECT				