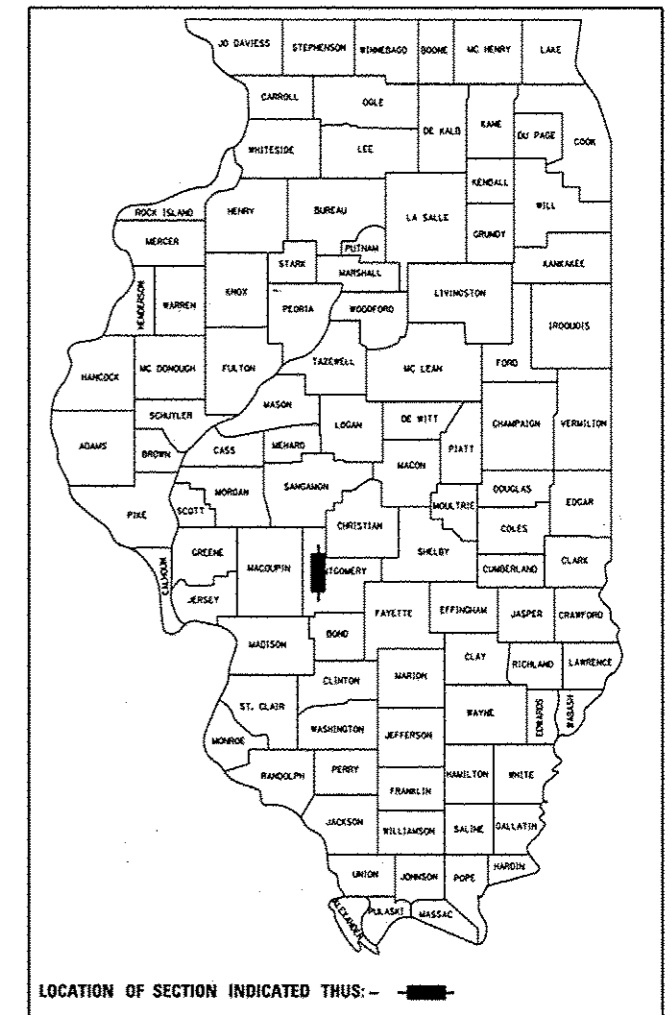


F.A.I. RTE.	SECTION	COUNTY	TOTAL SHEETS	SHEET NO.
55	68-2WS-2	MONTGOMERY	124	1
		ILLINOIS	CONTRACT NO. 72505	

124 + 11 = 135

D-96-517-01



STATE OF ILLINOIS
DEPARTMENT OF TRANSPORTATION
DIVISION OF HIGHWAYS

**PROPOSED
HIGHWAY PLANS**

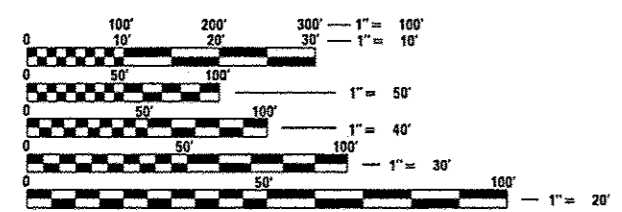
FAI ROUTE 55 (I-55)
SECTION 68-2WS-2
LITCHFIELD WEIGH STATION RECONSTRUCTION

MONTGOMERY COUNTY

C-96-525-03

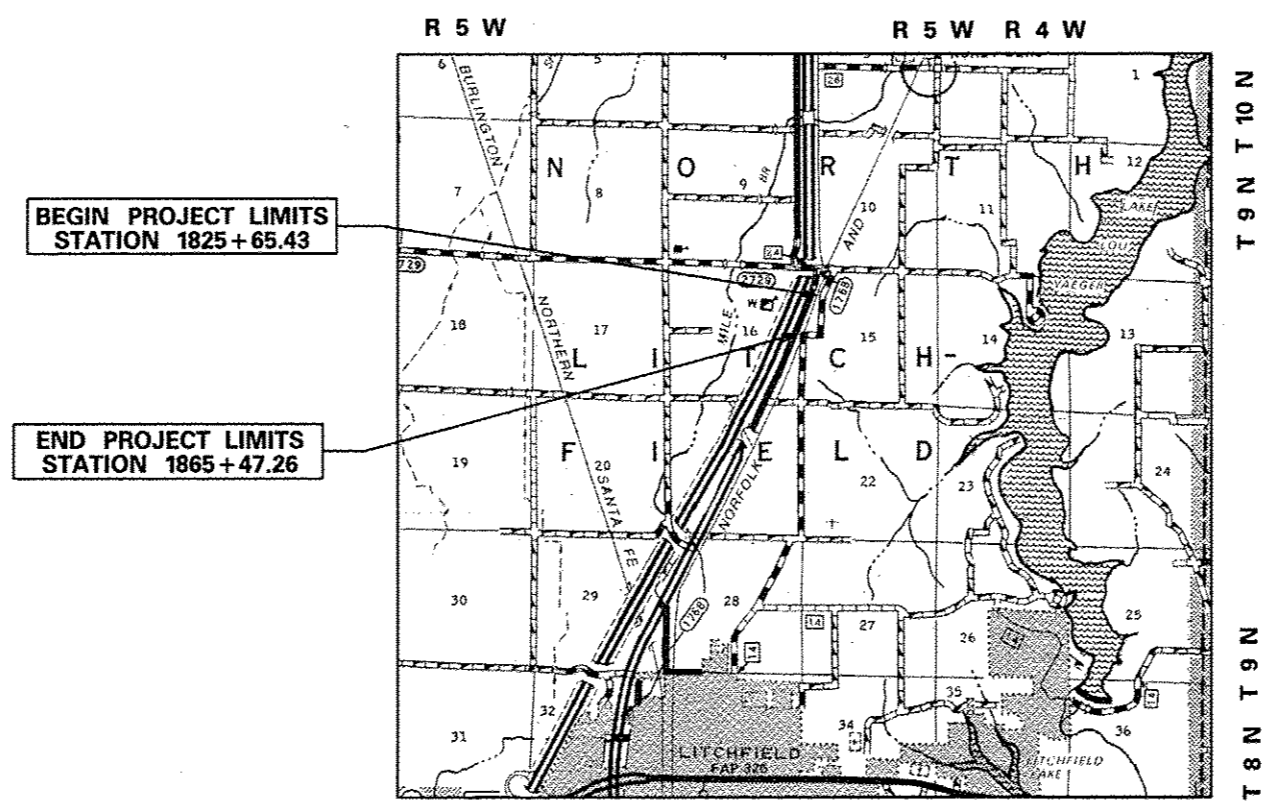
FOR INDEX OF SHEETS, SEE SHEET NO. 2

I-55 ADT
23,000 (2011)
PV = 69.91%
SU = 4.55%
MU = 25.54%



FULL SIZE PLANS HAVE BEEN PREPARED USING STANDARD ENGINEERING SCALES. REDUCED SIZED PLANS WILL NOT CONFORM TO STANDARD SCALES. IN MAKING MEASUREMENTS ON REDUCED PLANS, THE ABOVE SCALES MAY BE USED.

J.U.L.I.E.
JOINT UTILITY LOCATION INFORMATION FOR EXCAVATION
1-800-892-0123
OR 811



PROJECT ENGINEER: VINCE MADONIA 217-785-9046
SQUAD LEADER: JULIET SHOULTZ 217-785-2739

GROSS LENGTH = 3992.55 FT. = 0.76 MILE
NET LENGTH = 3992.55 FT. = 0.76 MILE

CONTRACT NO. 72505

STATE OF ILLINOIS
DEPARTMENT OF TRANSPORTATION
DIVISION OF HIGHWAYS

SUBMITTED April 12 20 13
Roy Z. Oskier
DEPUTY DIRECTOR OF HIGHWAYS, REGION ENGINEER

May 10 20 13
John D. Baranzelli, P.E.
ENGINEER OF DESIGN AND ENVIRONMENT

May 10 20 13
Omer Osman, P.E.
DIRECTOR OF HIGHWAYS, CHIEF ENGINEER

**PRINTED BY THE AUTHORITY
OF THE STATE OF ILLINOIS**