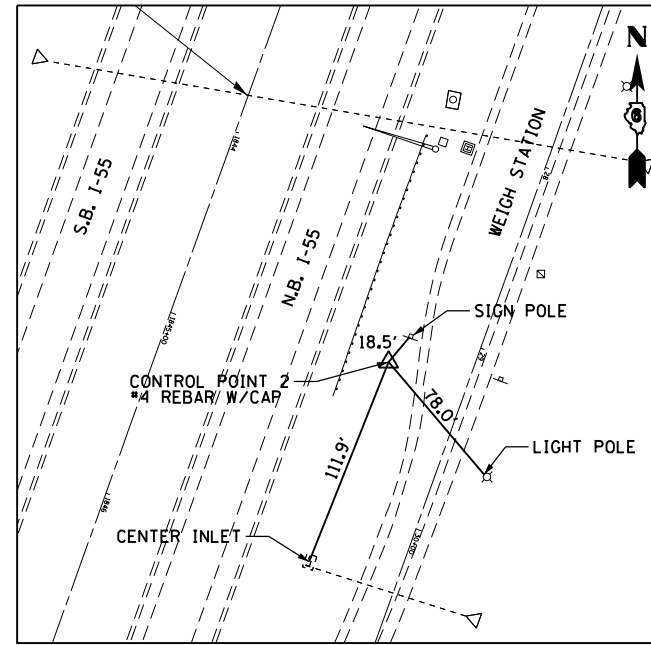
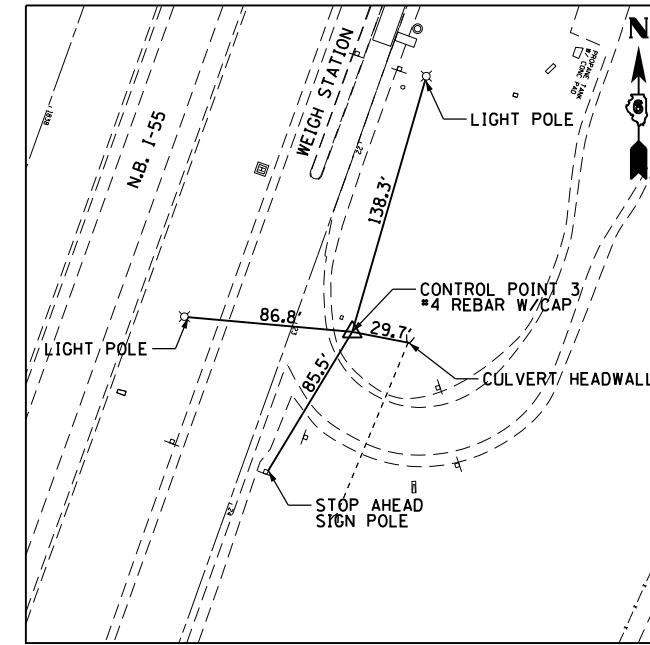


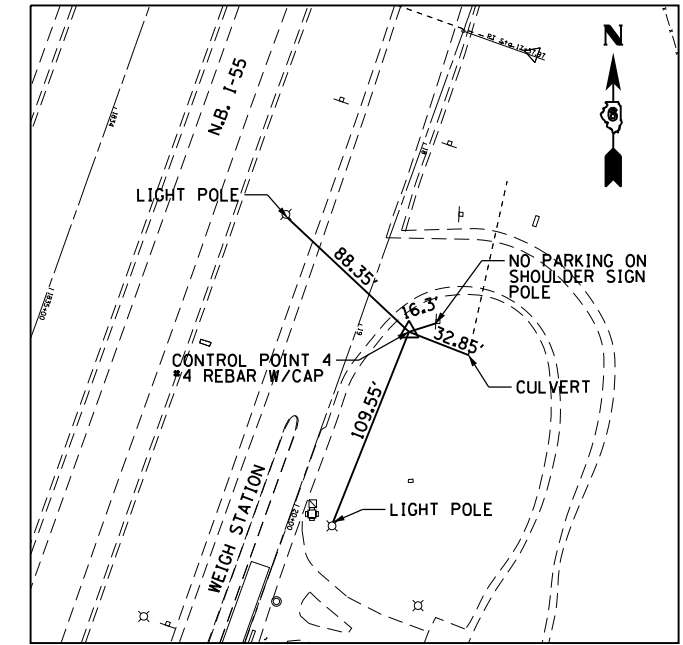
CONTROL POINT #1
 #4 REBAR WITH CAP
 N = 930996.296
 E = 2443970.188



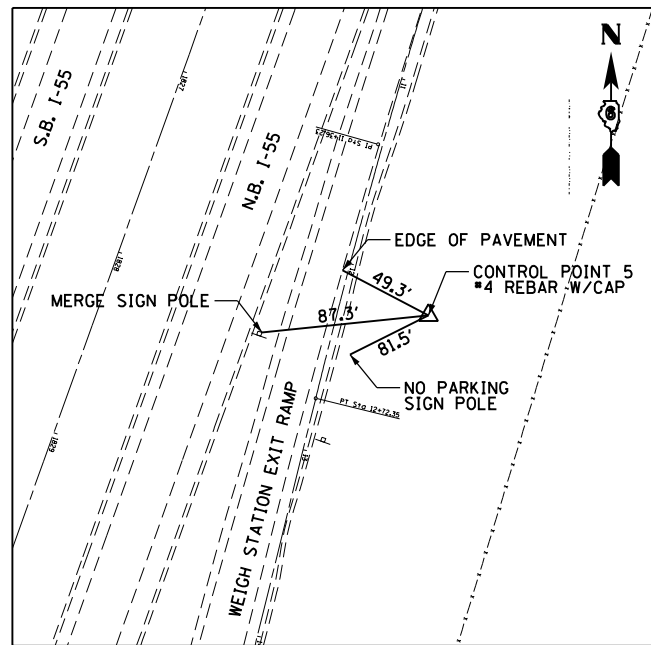
CONTROL POINT #2
 #4 REBAR WITH CAP
 N = 932141.844
 E = 2444403.001



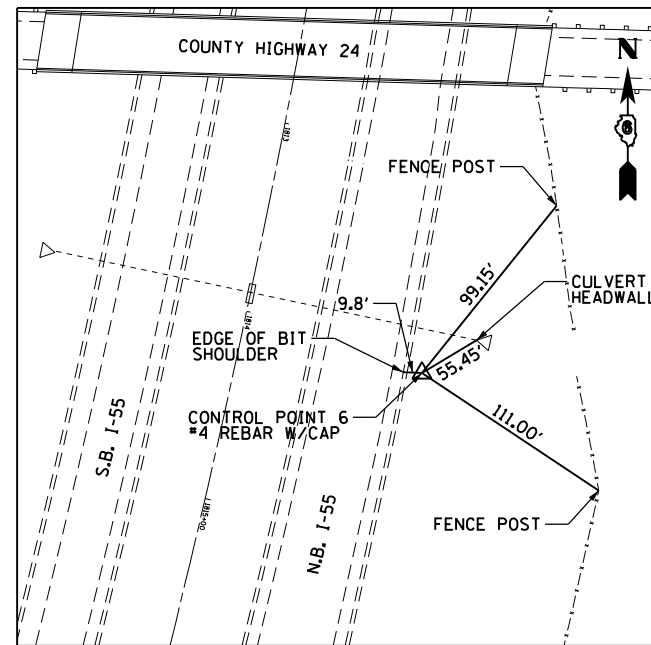
CONTROL POINT #3
 #4 REBAR WITH CAP
 N = 932709.055
 E = 2444683.582



CONTROL POINT #4
 #4 REBAR WITH CAP
 N = 933086.446
 E = 2444814.091



CONTROL POINT #5
 #4 REBAR WITH CAP
 N = 933735.355
 E = 2445023.554



CONTROL POINT #6
 #4 REBAR WITH CAP
 N = 935069.381
 E = 2445376.059

- BENCHMARKS**
- BENCHMARK 100 - STATION 1853+52.94, 105.71 LT. OF CENTERLINE MEDIAN SET CHISELED "+" IN WEST BOLT OF OVERHEAD WEIGH STATION SIGN FOUNDATION. ELEVATION = 663.11
 - BENCHMARK 101 - STATION 1847+43.70, 167.60 LT. OF CENTERLINE MEDIAN, SET CHISELED "u" IN NW CORNER LIGHT POLE FOUNDATION (6TH LIGHT POLE SOUTH OF SCALE HOUSE) EAST SIDE OF RAMP. ELEVATION = 656.40
 - BENCHMARK 102 - STATION 1936+44.33, 104.26 LT. OF CENTERLINE MEDIAN, SET CHISELED "u" IN SE CORNER LIGHT POLE FOUNDATION STRAIGHT WEST OF SCALE HOUSE. ELEVATION = 657.45
 - BENCHMARK 103 - STATION 1826+23.20, 105.70 LT. OF CENTERLINE MEDIAN, SET CHISELED "u" IN EAST EDGE OF RAMP. ELEVATION = 660.15

FILE NAME =	USER NAME = sparksgw	DESIGNED -	REVISED -	STATE OF ILLINOIS DEPARTMENT OF TRANSPORTATION	SURVEY CONTROL POINTS AND BENCHMARKS			F.A.I. RTE.	SECTION	COUNTY	TOTAL SHEETS	SHEET NO.
et:\pw\work\p\d\dot\sparksgw\10216368\0672505-sh1-BM_CP.dgn	DRAWN -	REVISED -	55					68-2WS-2	MONTGOMERY	124	17	
PLOT SCALE = 200.0000' / in.	CHECKED -	REVISED -	CONTRACT NO. 72505									
PLOT DATE = Apr-11-2013 03:49:47PM	DATE -	REVISED -	ILLINOIS FED. AID PROJECT									