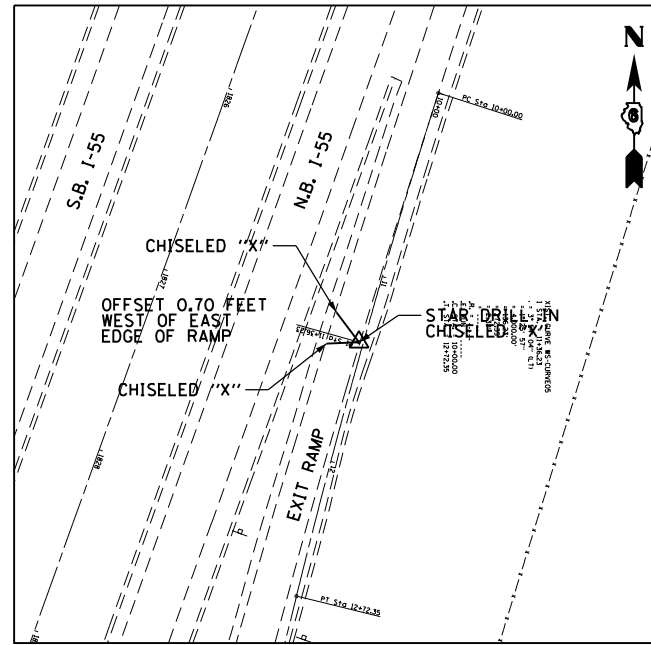
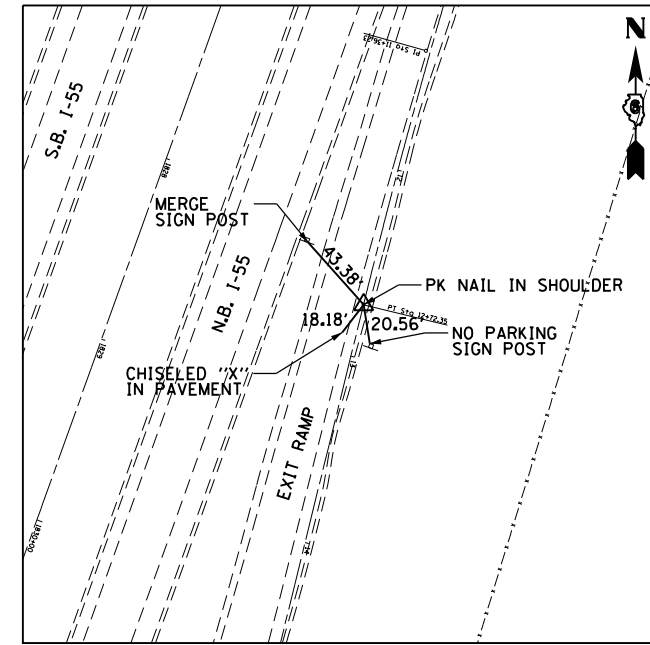


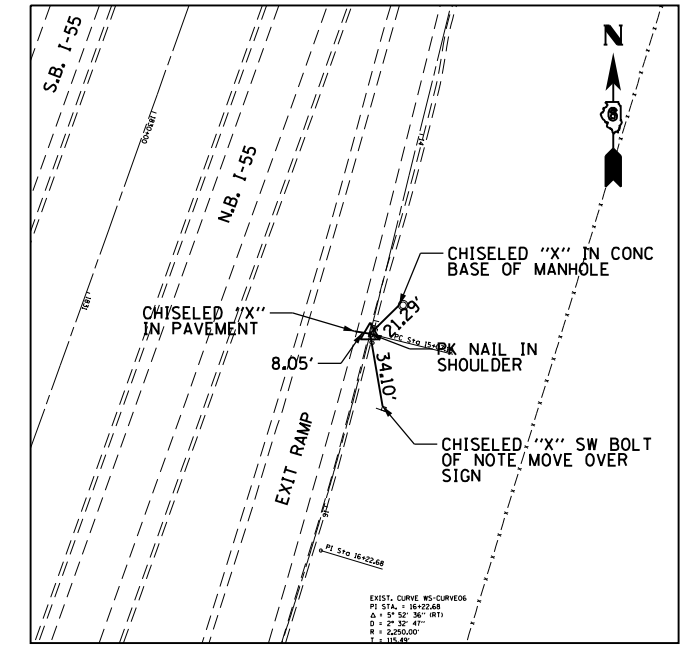
PC STATION 10+00.00
 PK NAIL
 N = 933,954.21
 E = 2,445,038.87



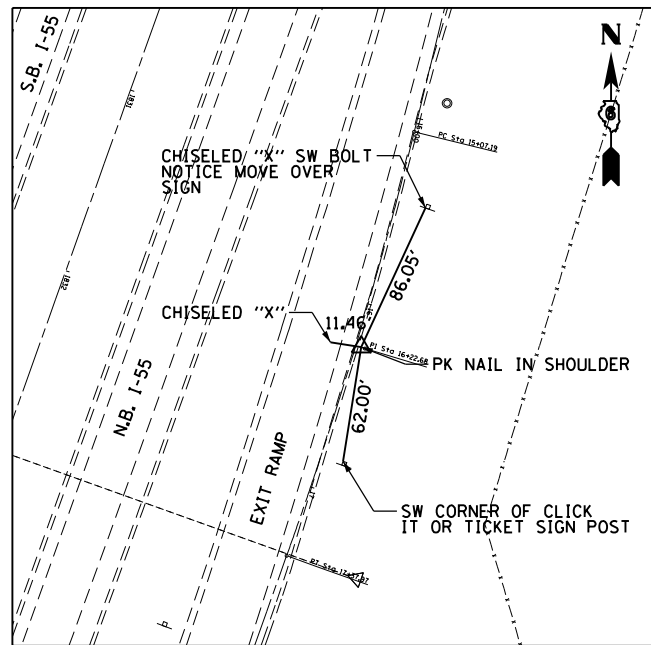
PI STATION 11+36.23
 STAR DRILL IN CHISELED X
 N = 933,824.43
 E = 2,444,997.43



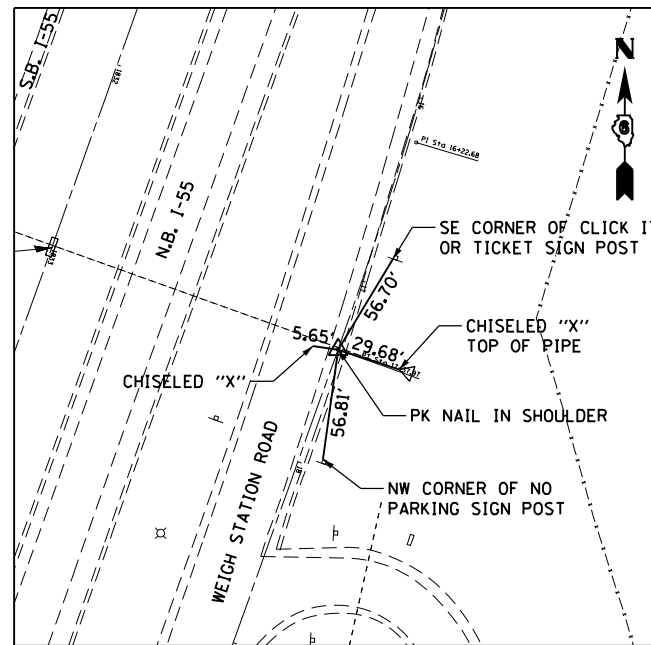
PT STATION 12+72.35
 PK NAIL IN SHOULDER
 N = 933,692.14
 E = 2,444,964.91



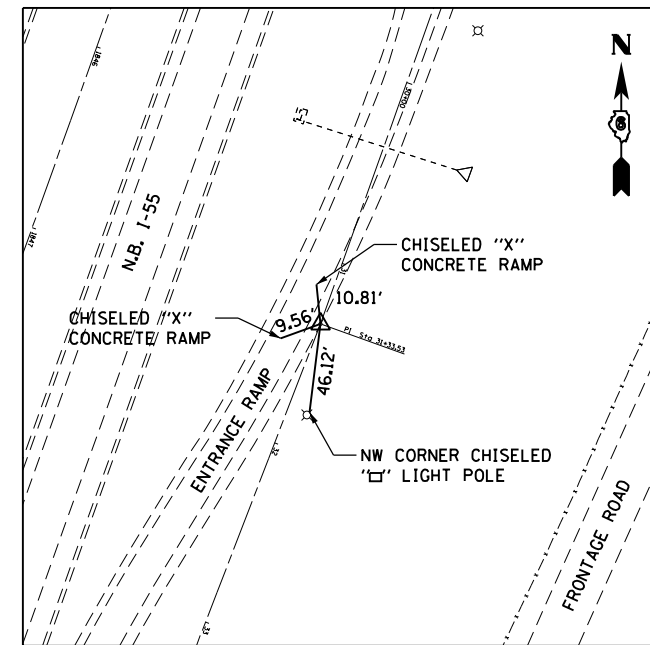
PC STATION 15+07.19
 PK NAIL IN SHOULDER
 N = 933,464.09
 E = 2,444,908.86



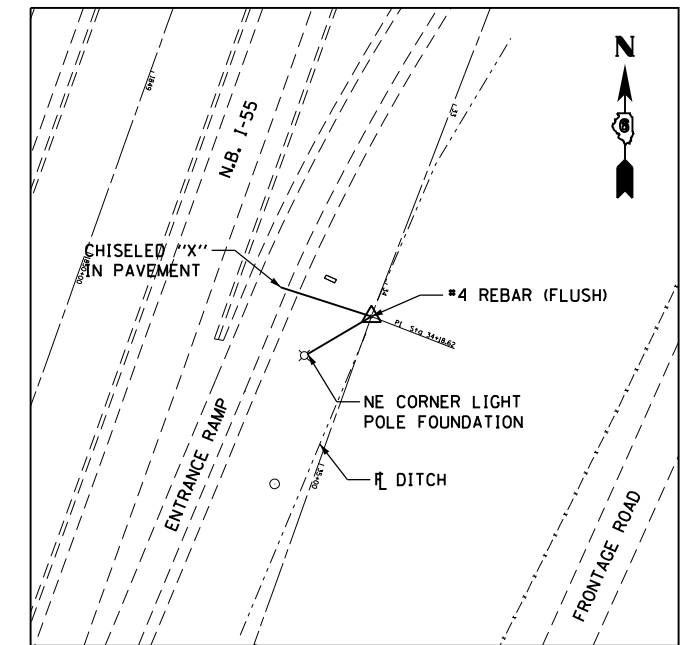
PI STATION 16+22.68
 PK NAIL IN SHOULDER
 N = 933,351.94
 E = 2,444,881.29



PT STATION 17+37.97
 PK NAIL IN SHOULDER
 N = 933,243.20
 E = 2,444,842.39



PI STATION 31+33.53
 PK NAIL IN SHOULDER
 N = 931,929.20
 E = 2,444,372.28



PI STATION 34+18.62
 #4 REBAR (FLUSH)
 N = 931,663.22
 E = 2,444,269.68

FILE NAME =	USER NAME = sparksgw	DESIGNED -	REVISED -
c:\pw_work\p1d0t\sparksgw\10216368\0672505-sh1-Align_Ties.dgn		DRAWN -	REVISED -
		CHECKED -	REVISED -
		DATE -	REVISED -

**STATE OF ILLINOIS
 DEPARTMENT OF TRANSPORTATION**

**ALIGNMENT TIES
 PROPOSED WEIGH STATION ROAD**

SCALE: SHEET 1 OF 2 SHEETS STA. TO STA.

F.A.I. RTE.	SECTION	COUNTY	TOTAL SHEETS	SHEET NO.
55	68-2WS-2	MONTGOMERY	124	18
				CONTRACT NO. 72505
ILLINOIS FED. AID PROJECT				