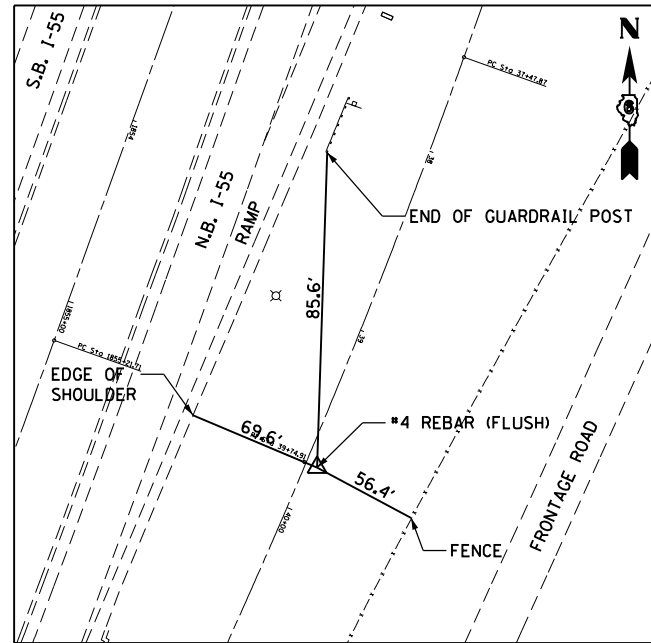
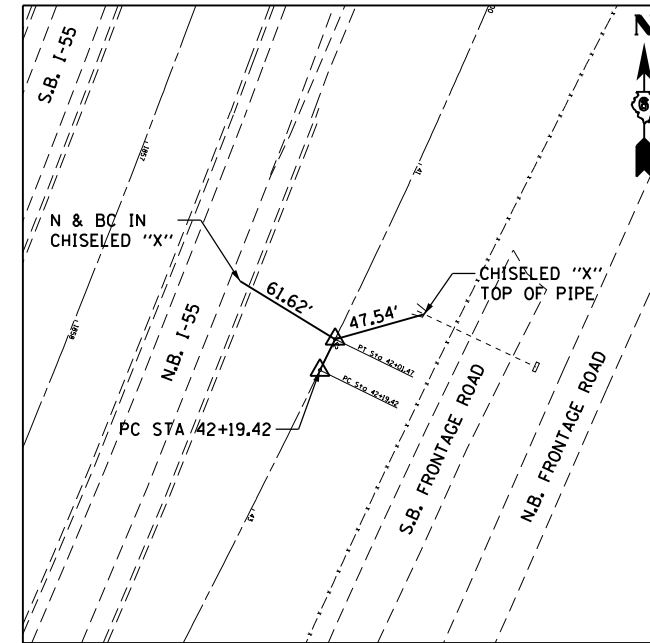


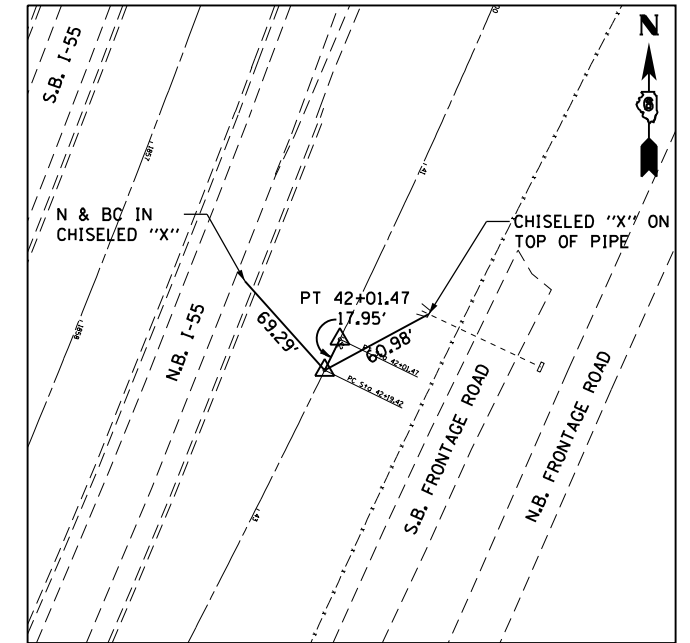
PC STATION 37+47.87
#4 REBAR (FLUSH)
N = 931,353.21
E = 2,444,158.77



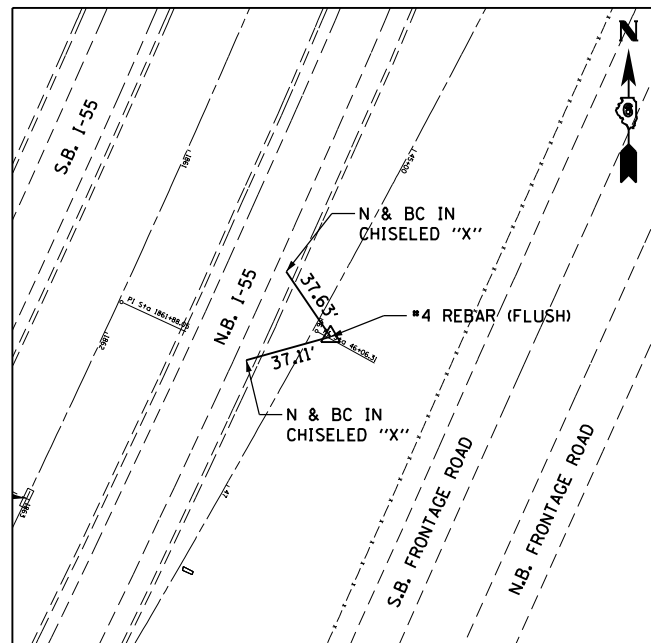
PI STATION 39+74.91
#4 REBAR (FLUSH)
N = 931,139.44
E = 2,444,082.29



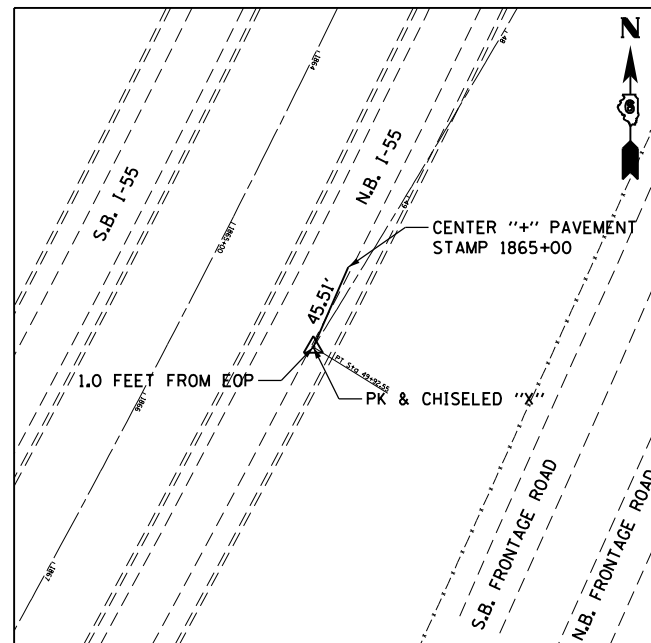
PT STATION 42+01.47
#4 REBAR (FLUSH)
N = 930,935.48
E = 2,443,982.57



PC STATION 42+19.42
#4 REBAR (FLUSH)
N = 930,919.36
E = 2,443,974.70



PI STA 46+06.31
#4 REBAR (FLUSH)
N = 930,571.78
E = 2,443,804.78



PT STATION 49+92.55
PK & CHISELED "X"
N = 930,571.78
E = 2,443,601.01

FILE NAME =	USER NAME = sparksgw	DESIGNED -	REVISED -
c:\pw\work\p\dot\sparksgw\0216368\0672505-shr-Align_Ties.dgn		DRAWN -	REVISED -
		CHECKED -	REVISED -
		DATE -	REVISED -

**STATE OF ILLINOIS
DEPARTMENT OF TRANSPORTATION**

ALIGNMENT TIES PROPOSED WEIGH STATION ROAD			
SCALE:	SHEET 2 OF 2 SHEETS	STA.	TO STA.

F.A.I. RTE.	SECTION	COUNTY	TOTAL SHEETS	SHEET NO.
55	68-2WS-2	MONTGOMERY	124	19
CONTRACT NO. 72505				
ILLINOIS FED. AID PROJECT				