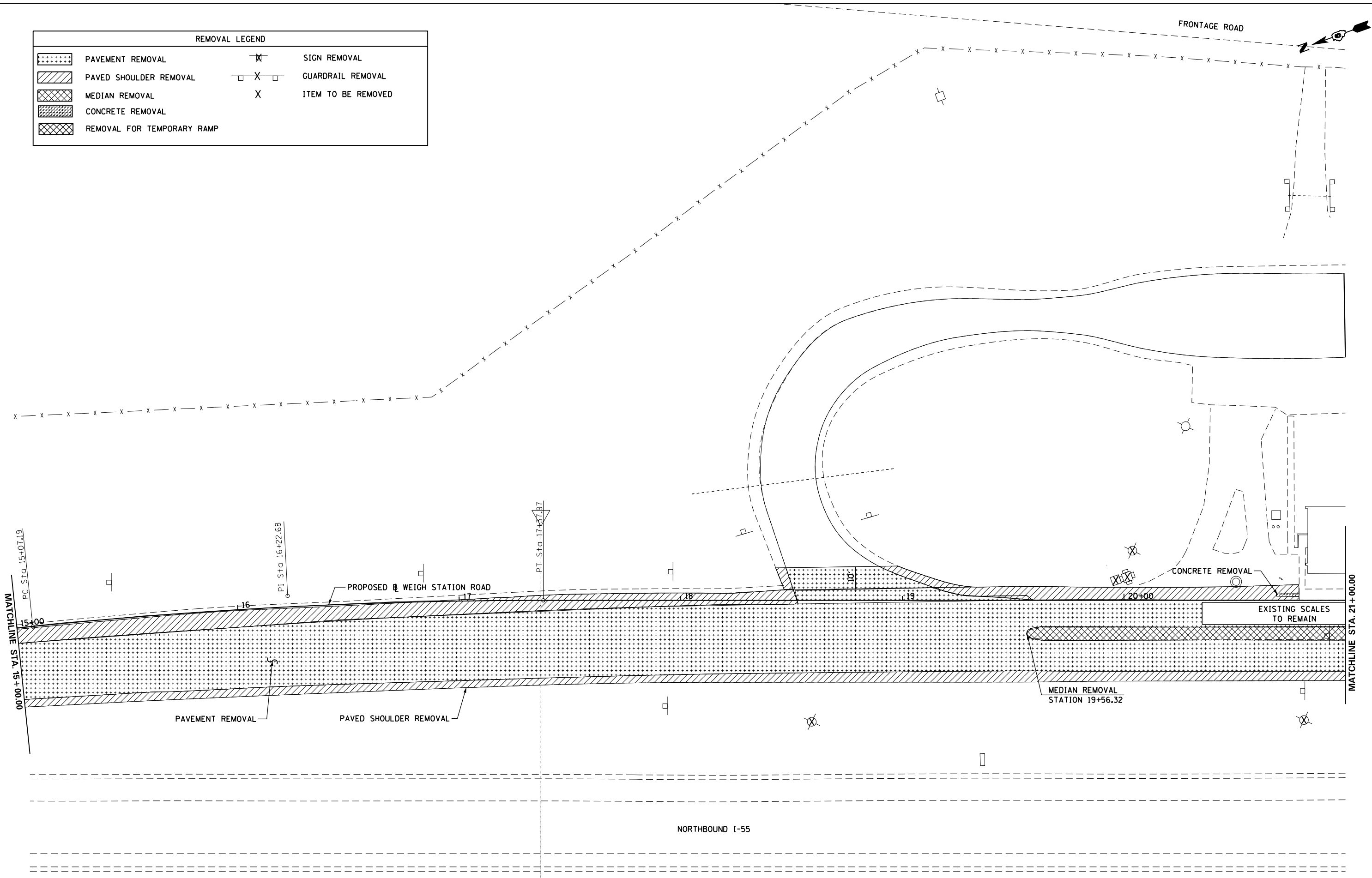


| REMOVAL LEGEND | | | |
|----------------|----------------------------|--|--------------------|
| | PAVEMENT REMOVAL | | SIGN REMOVAL |
| | PAVED SHOULDER REMOVAL | | GUARDRAIL REMOVAL |
| | MEDIAN REMOVAL | | ITEM TO BE REMOVED |
| | CONCRETE REMOVAL | | |
| | REMOVAL FOR TEMPORARY RAMP | | |



| | | | |
|---|------------------------------------|----------------|-----------|
| FILE NAME = | USER NAME = sparksgw | DESIGNED - MEW | REVISED - |
| et:\pw\work\pwidot\sparksgw\0216368\0672505-sht-removal.dgn | | DRAWN - MEW | REVISED - |
| | PLOT SCALE = 40.0000' / in. | CHECKED - MEW | REVISED - |
| | PLOT DATE = Apr-11-2013 03:50:23PM | DATE - VJM | REVISED - |

**STATE OF ILLINOIS
DEPARTMENT OF TRANSPORTATION**

**REMOVAL PLAN
SHEET 2**

SCALE: 1" = 20' SHEET NO. 2 OF 7 SHEETS STA. 15+00.00 TO STA. 21+00.00

| F.A.I. RTE. | SECTION | COUNTY | TOTAL SHEETS | SHEET NO. |
|---------------------------|----------|------------|--------------|-----------|
| 55 | 68-2WS-2 | MONTGOMERY | 124 | 36 |
| CONTRACT NO. 72505 | | | | |
| ILLINOIS FED. AID PROJECT | | | | |