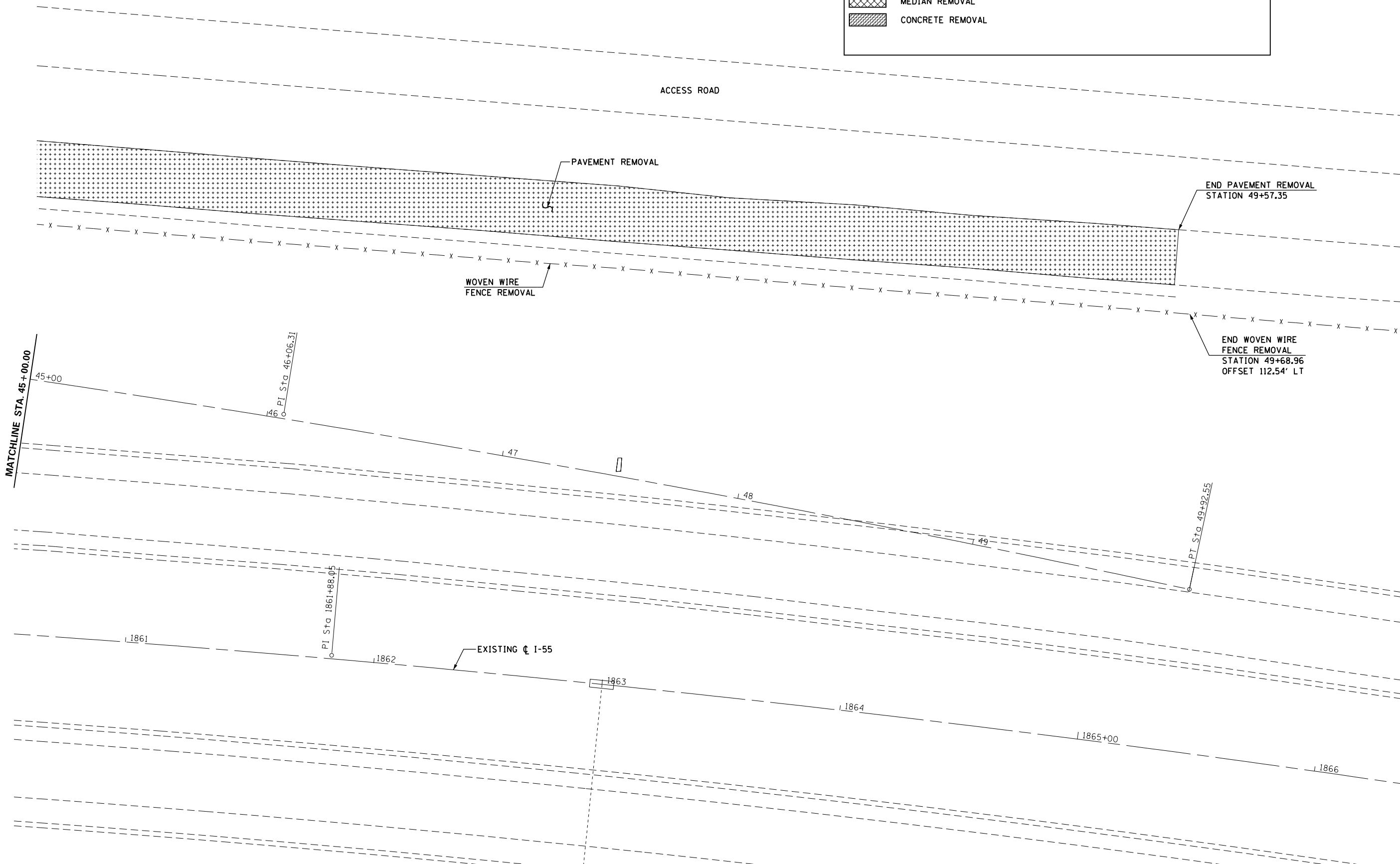




REMOVAL LEGEND			
	PAVEMENT REMOVAL		SIGN REMOVAL
	PAVED SHOULDER REMOVAL		GUARDRAIL REMOVAL
	MEDIAN REMOVAL		ITEM TO BE REMOVED
	CONCRETE REMOVAL		



FILE NAME = c:\pwork\pwork\pwork\sparksgw\0216368\0672505-sht-removal.dgn	USER NAME = sparksgw	DESIGNED - MEW	REVISED -	<b>STATE OF ILLINOIS DEPARTMENT OF TRANSPORTATION</b>	<b>REMOVAL PLAN SHEET 7</b>		F.A.I. RTE. = 55	SECTION = 68-2WS-2	COUNTY = MONTGOMERY	TOTAL SHEETS = 124	SHEET NO. = 41
	PLOT SCALE = 40.0000' / in.	CHECKED - MEW	REVISED -				CONTRACT NO. 72505				
PLOT DATE = Apr-11-2013 03:50:27PM	DATE - VJM	REVISED -	ILLINOIS FED. AID PROJECT								
			SCALE: 1" = 20'		SHEET NO. 7 OF 7 SHEETS	STA. 45+00.00 TO STA. 49+92.56					