

**TYPICAL TRUSS UNIT**

Note: For Section B-B and Section C-C, see Base Sheet OSC-A-3.

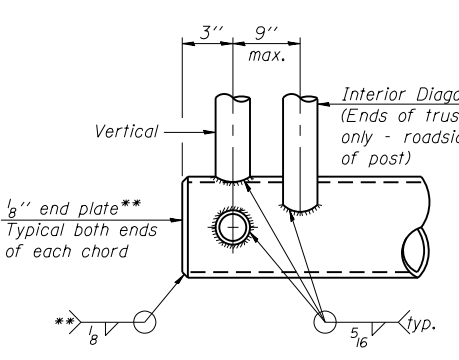
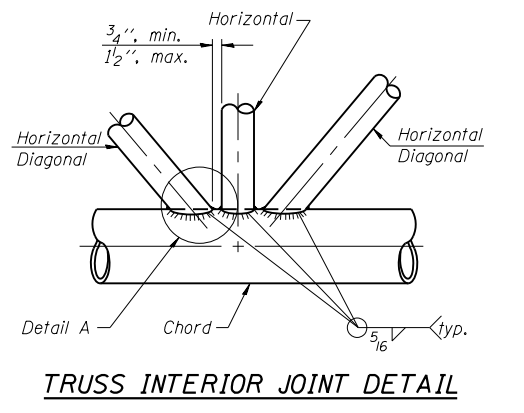
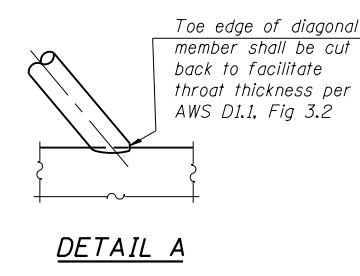
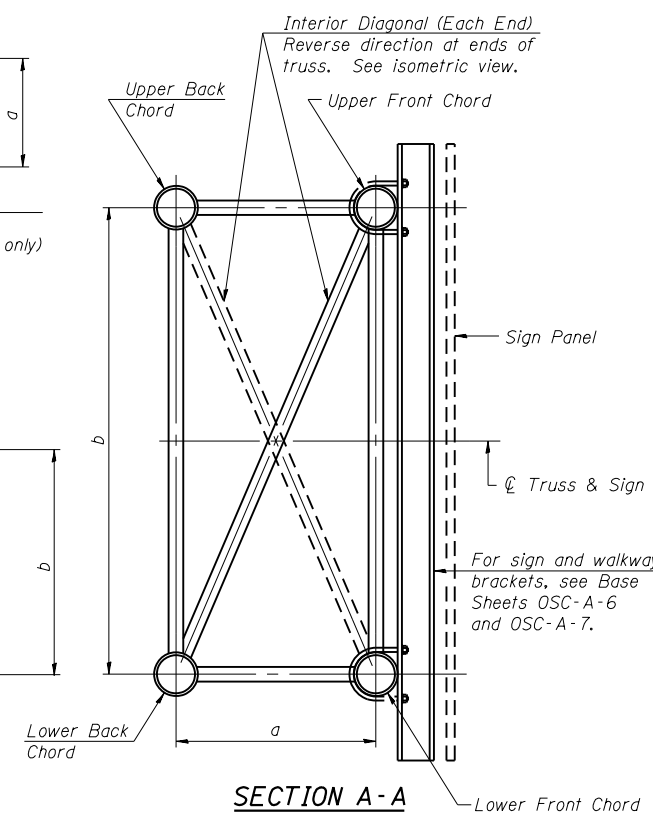
There are twice as many horizontal diagonals as there are vertical diagonals.

**TRUSS UNIT TABLE**

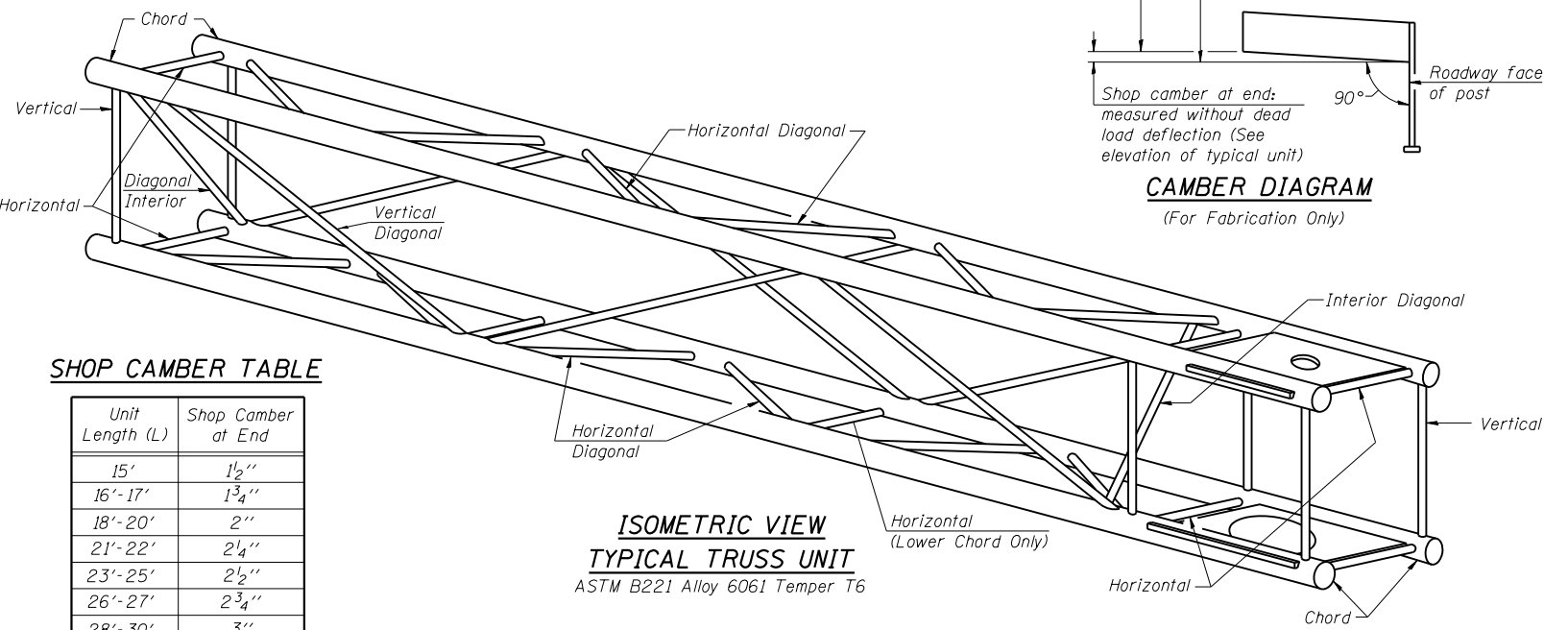
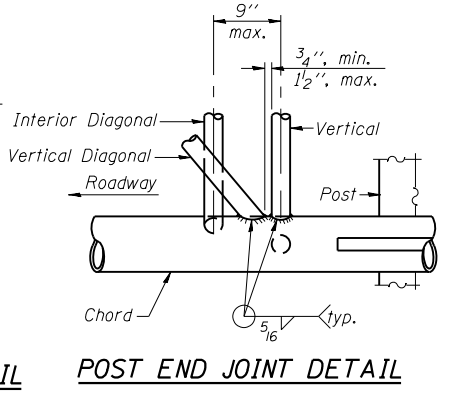
Truss Type	Dimension "a"	Dimension "b"	Dimension "s"	Limits for Panel Spacing (P)*	Up. & Low. Chord		Verticals; Horizontals; Vertical, Horizontal, and Interior Diagonals	
					O.D.	Wall	O.D.	Wall
I-C-A	24"	54"	16"	36" min. to 48" max.	5"	5/16"	2 1/2"	5/16"
II-C-A	36"	66"	21"	42" min. to 54" max.	6 1/2"	5/16"	3 1/4"	5/16"
III-C-A (35' Max.)	36"	84"	21"	48" min. to 66" max.	7"	3/8"	3 1/2"	3/8"
III-C-A (>35' to 40')	36"	84"	21"	48" min. to 66" max.	8"	3/8"	3 1/2"	3/8"

$$*P = \frac{L - s - 3''}{\# \text{ Panels}}$$

Structure Number	Station	Truss Type	Design Length (L)	Number of Panels Per Unit	Panel Length (P)*
6C0681055R056.1	47+47.76	III-C-A	35'-0"	6	5'-6"



**CANTILEVER END JOINT DETAIL**  
\*\* Contractor may alternatively use standard aluminum drive-fit cap to close ends.



**SHOP CAMBER TABLE**

Unit Length (L)	Shop Camber at End
15'	1 1/2"
16'-17'	1 3/4"
18'-20'	2"
21'-22'	2 1/4"
23'-25'	2 1/2"
26'-27'	2 3/4"
28'-30'	3"
31'-32'	3 1/4"
33'-35'	3 1/2"
36'-37'	4"
38'-40'	4 1/2"

OSC-A-2 1-20-11

FILE NAME =	USER NAME = sparksgw	DESIGNED -	REVISED -
et:\pw\work\p1dot\sparksgw\10216368\0672505-SHT-WMSIGN-DETAILS.dgn		DRAWN -	REVISED -
		CHECKED -	REVISED -
		DATE -	REVISED -

STATE OF ILLINOIS  
DEPARTMENT OF TRANSPORTATION

CANTILEVER SIGN STRUCTURES - TRUSS DETAILS			
ALUMINUM TRUSS & STEEL POST			
SCALE:	SHEET NO. 3 OF 8 SHEETS	STA.	TO STA.

F.A.I. RTE.	SECTION	COUNTY	TOTAL SHEETS	SHEET NO.
55	68-2WS-2	MONTGOMERY	124	103
CONTRACT NO.72505				
ILLINOIS FED. AID PROJECT				