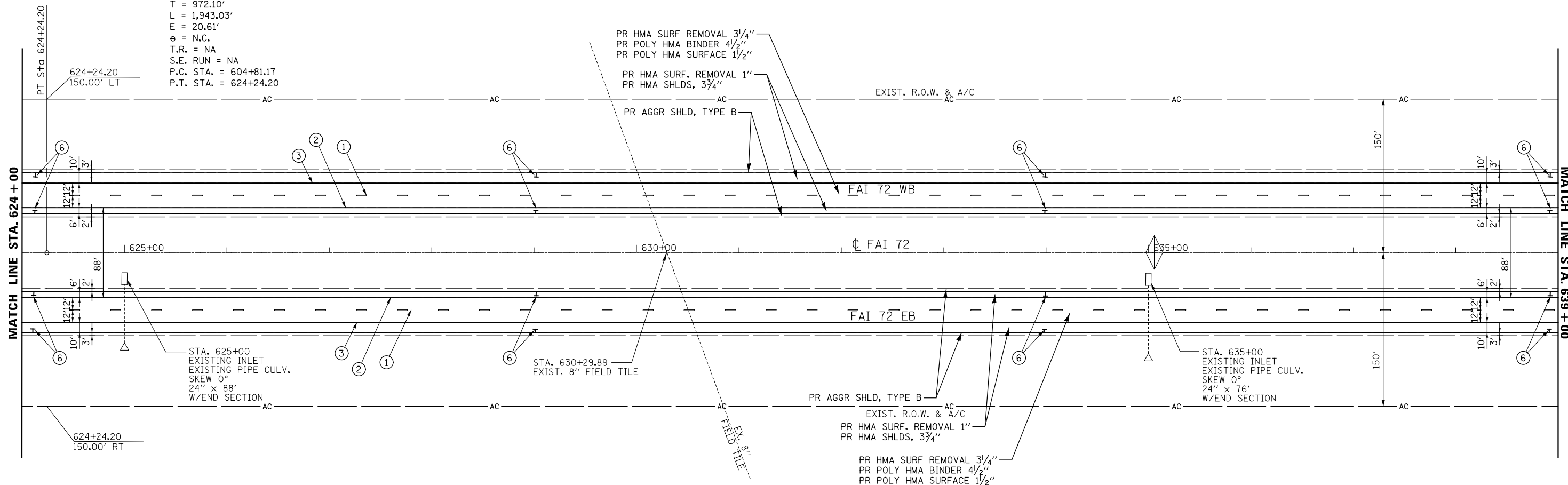


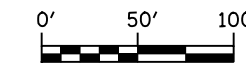


EXIST. CURVE C16 (I-72)
 PI STA. = 614+53.27
 $\Delta = 4^\circ 51' 27''$ (LT)
 $D = 0^\circ 15' 00''$
 $R = 22,918.31'$
 $T = 972.10'$
 $L = 1,943.03'$
 $E = 20.61'$
 $e = \text{N.C.}$
 $T.R. = \text{NA}$
 $S.E. \text{ RUN} = \text{NA}$
 $P.C. \text{ STA.} = 604+81.17$
 $P.T. \text{ STA.} = 624+24.20$



PAVEMENT MARKING LEGEND

- ① PR PREFORMED PLASTIC PAVEMENT MARKING, TYPE B - INLAID) - LINE 5" (30' SKIP, 10' DASH WHITE)
- ② PR MODIFIED URETHANE PAVEMENT MARKING - LINE 5" (SOLID YELLOW)
- ③ PR MODIFIED URETHANE PAVEMENT MARKING - LINE 5" (SOLID WHITE)
- ④ PR MODIFIED URETHANE PAVEMENT MARKING - LINE 8" (SOLID WHITE)
- ⑤ PR MODIFIED URETHANE PAVEMENT MARKING - LINE 12" (SOLID WHITE)
- ⑥ PR OUTLET MARKER (EACH) SEE DETAIL



FILE NAME = ... \CADD\0672C88-sh1-plan07.dgn	USER NAME =	DESIGNED -	REVISED -
	PLOT SCALE = 100.0002' / 1" =	DRAWN -	REVISED -
	PLOT DATE = 04/02/2013 09:23:02	CHECKED -	REVISED -
		DATE -	REVISED -

**STATE OF ILLINOIS
DEPARTMENT OF TRANSPORTATION**

PLAN SHEETS

SCALE: SHEET NO. OF SHEETS STA. TO STA.

F.A.I. RTE.	SECTION	COUNTY	TOTAL SHEETS	SHEET NO.
72	(84-10-3)RS-5	SANGAMON	95	53
CONTRACT NO. 72C88				
ILLINOIS FED. AID PROJECT				