

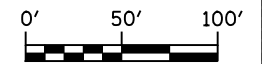
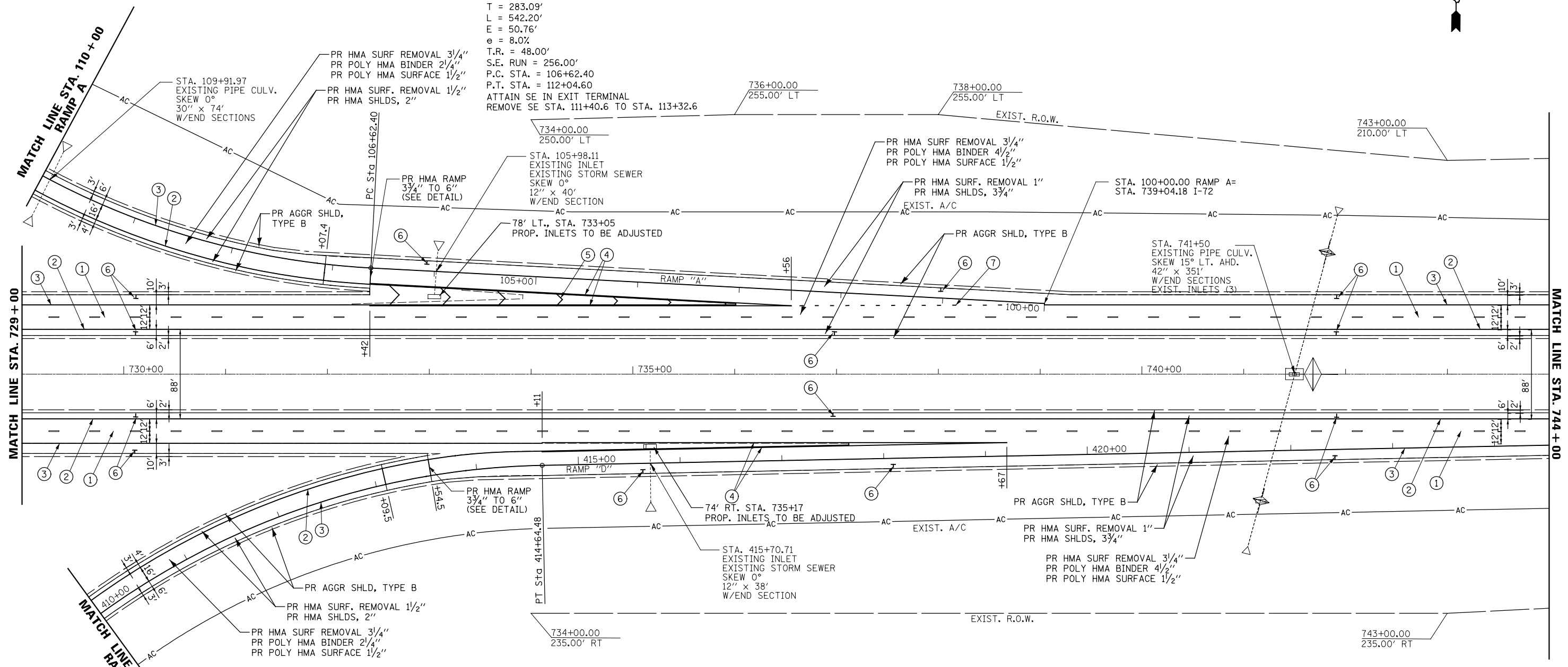


EXIST. CURVE 1, RAMP A
 PI STA. = 109+45.48
 $\Delta = 40^\circ 39' 56''$ (RT)
 $D = 7^\circ 30' 00''$
 $R = 763.94'$
 $T = 283.09'$
 $L = 542.20'$
 $E = 50.76'$
 $e = 8.0\%$
 $T.R. = 48.00'$
 $S.E. RUN = 256.00'$
 $P.C. STA. = 106+62.40$
 $P.T. STA. = 112+04.60$
 ATTAIN SE IN EXIT TERMINAL
 REMOVE SE STA. 111+40.6 TO STA. 113+32.6

EXIST. CURVE 2, RAMP D
 PI STA. = 411+82.32
 $\Delta = 44^\circ 44' 44''$ (RT)
 $D = 7^\circ 30' 00''$
 $R = 763.94'$
 $T = 314.45'$
 $L = 596.60'$
 $E = 62.19'$
 $e = 8.0\%$
 $T.R. = 48.00'$
 $S.E. RUN = 256.00'$
 $P.C. STA. = 408+67.87$
 $P.T. STA. = 414+64.48$
 ATTAIN SE STA. 407+39.87 TO STA. 409+31.87
 REMOVE SE IN ENTRANCE TERMINAL

PAVEMENT MARKING LEGEND

- ① PR PREFORMED PLASTIC PAVEMENT MARKING, TYPE B - INLAID - LINE 5" (30' SKIP, 10' DASH WHITE)
- ② PR MODIFIED URETHANE PAVEMENT MARKING - LINE 5" (SOLID YELLOW)
- ③ PR MODIFIED URETHANE PAVEMENT MARKING - LINE 5" (SOLID WHITE)
- ④ PR MODIFIED URETHANE PAVEMENT MARKING - LINE 8" (SOLID WHITE)
- ⑤ PR MODIFIED URETHANE PAVEMENT MARKING - LINE 12" (SOLID WHITE)
- ⑥ PR OUTLET MARKER (EACH) SEE DETAIL
- ⑦ PR MODIFIED URETHANE PAVEMENT MARKING - LINE 8" (12' SKIP, 3' DASH WHITE)



PART B - SHEET 32 of 67

FILE NAME = ... \CADD\0672C88-sh1-plan14.dgn	USER NAME =	DESIGNED -	REVISED -	STATE OF ILLINOIS DEPARTMENT OF TRANSPORTATION	PLAN SHEETS			F.A.I. RTE. = 72	SECTION = (84-10-3)RS-5	COUNTY = SANGAMON	TOTAL SHEETS = 95	SHEET NO. = 60
Johnson, Depp & Quisenberry CONSULTING ENGINEERS Springfield, Illinois	PLOT SCALE = 1/8" = 100'	DRAWN -	REVISED -		SCALE:	SHEET NO. OF SHEETS	STA. TO STA.	CONTRACT NO. 72C88				
	PLOT DATE = 04/02/2013 09:27:14	CHECKED -	REVISED -		ILLINOIS FED. AID PROJECT							
		DATE -	REVISED -									