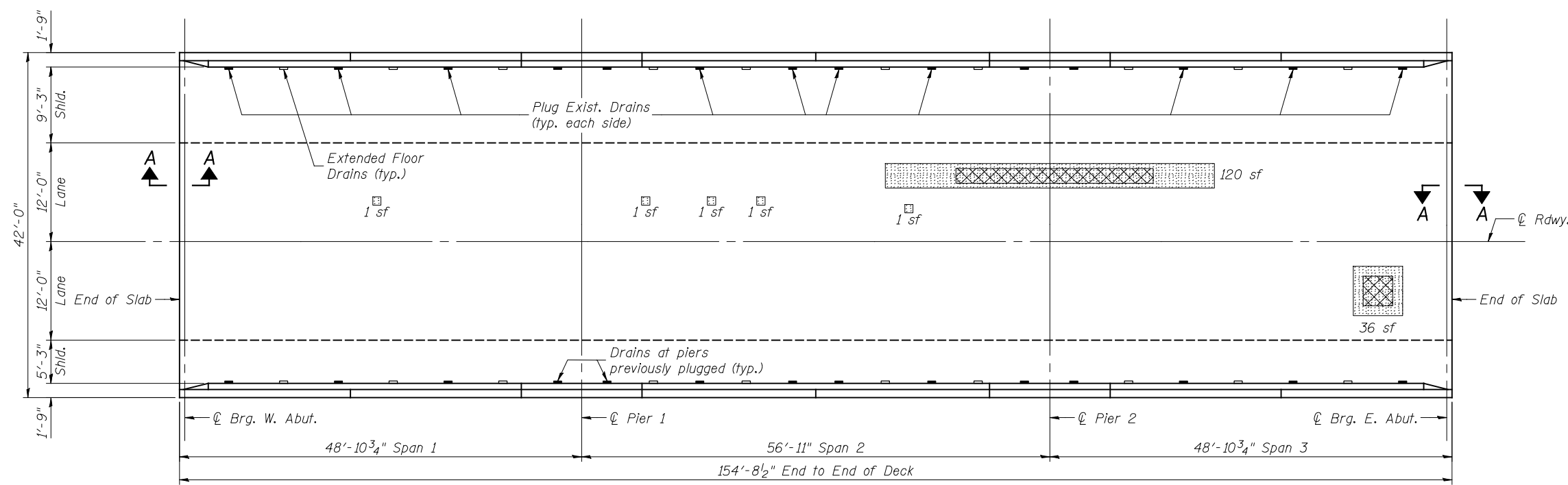
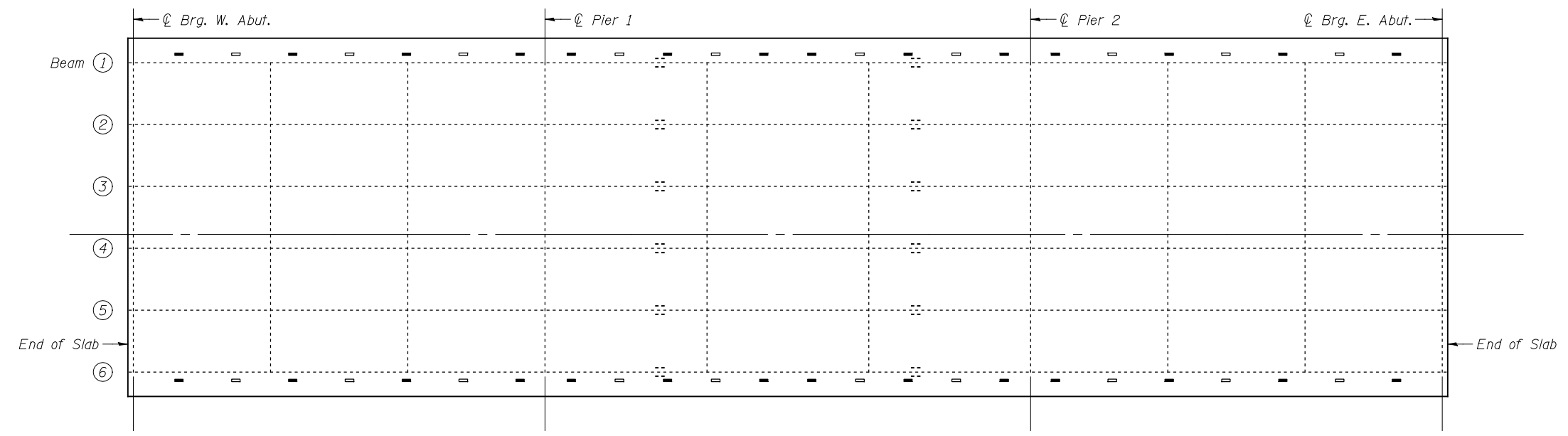


FILE: J:\ID01\02004_IL-DB\W7\1-72_Illopolis\3-LongPoint\Slough\0840163-72C88-004-deckrepair-WB.dgn
SAVE DATE: 3/29/2013

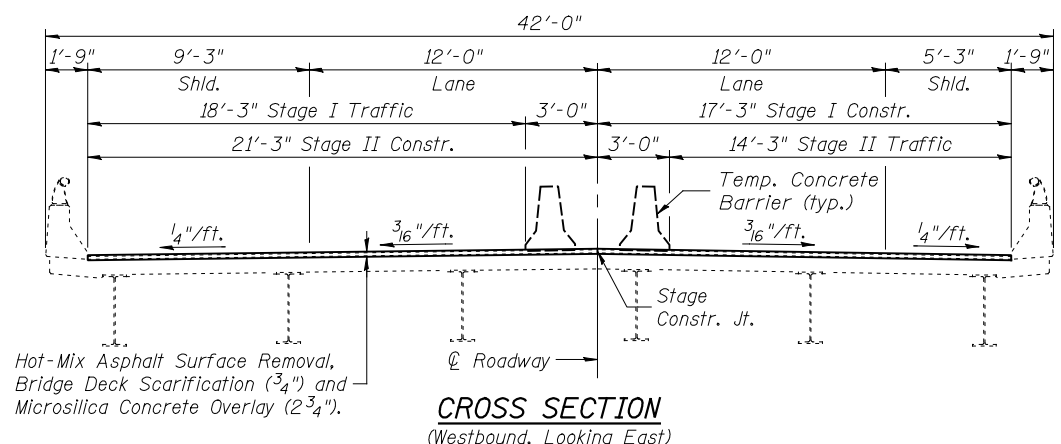


DECK PLAN-TOP



DECK PLAN-BOTTOM

- LEGEND**
- Deteriorated Asphalt Wearing Surface
 - Full-Depth Deck Repair (assumed)



CROSS SECTION
(Westbound, Looking East)

Notes:
Deck Condition Survey performed 9/07/2010 (by IDOT-D6).
Repair areas are estimated, the Engineer shall determine actual repair locations and record them on the As-Built plans. After scarification, the Engineer shall contact IDOT District 6 Operations-Bridge Maintenance staff to determine full-depth repair locations.
Partial depth repairs are included with Bridge Deck Scarification, see Special Provision for Bridge Deck Microsilica Concrete Overlay.
For Section A-A, see Sheet 5 of 10.

BILL OF MATERIAL

Item	Unit	Total
Deck Slab Repair (Full Depth, Type I)	Sq. Yd.	10
Deck Slab Repair (Full Depth, Type II)	Sq. Yd.	10
Plug Existing Deck Drains	Each	20
Floor Drain Extension	Each	20

FILE NAME =	USER NAME = DCD	DESIGNED - CMV	REVISED -
...\\0840163-72C88-004-deckrepair-WB.dgn		CHECKED - DCD	REVISED -
PLOT SCALE =		DRAWN - P. Ray	REVISED -
PLOT DATE = 04/02/2013 15:18:43		CHECKED - CMV/DCD	REVISED -

STATE OF ILLINOIS
DEPARTMENT OF TRANSPORTATION

DECK REPAIRS - WESTBOUND
STRUCTURE NO. 084-0163(EB) & 084-0164(WB)

SHEET NO. 4 OF 10 SHEETS

F.A.I. RTE. =	SECTION =	COUNTY =	TOTAL SHEETS =	SHEET NO. =
72	(84-10-3)RS-5	SANGAMON	95	81
STA. 799+18.00		CONTRACT NO. 72C88		
ILLINOIS FED. AID PROJECT				