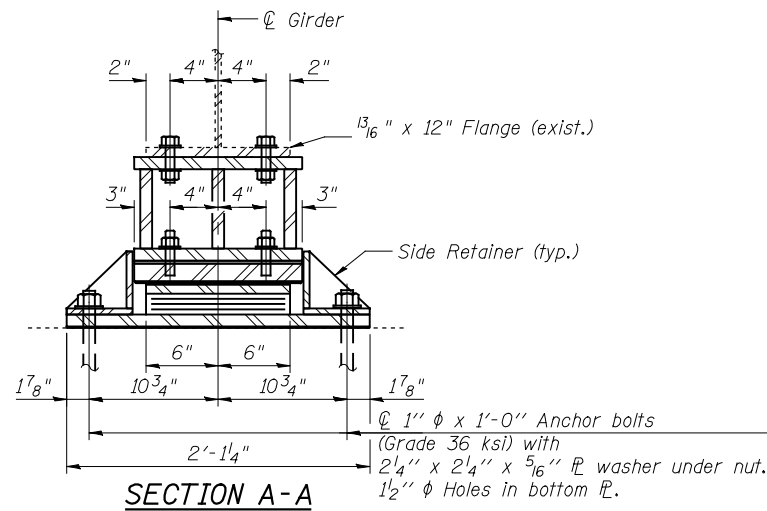
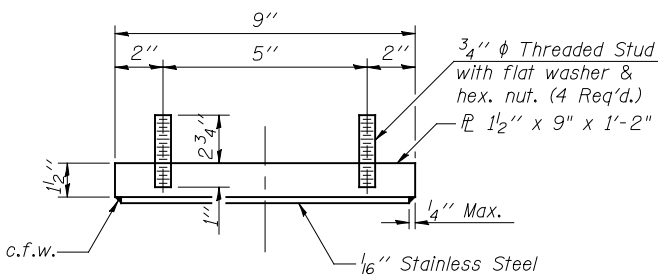


ELEVATION

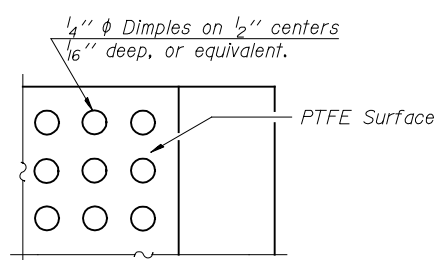
TYPE II ELASTOMERIC EXP. BRG.



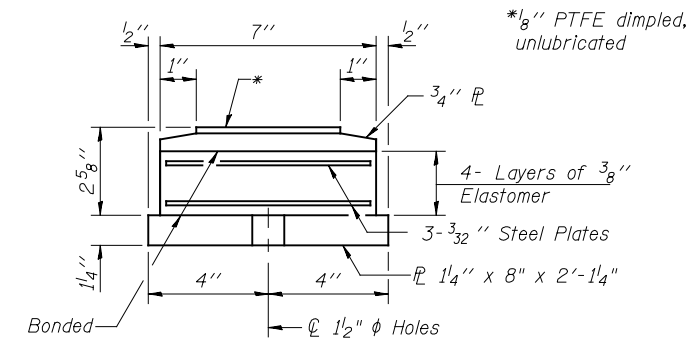
SECTION A-A



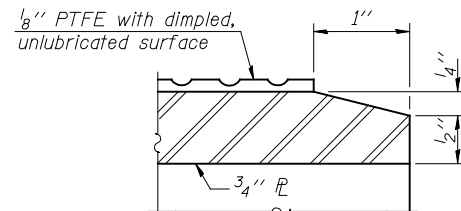
TOP BEARING ASSEMBLY



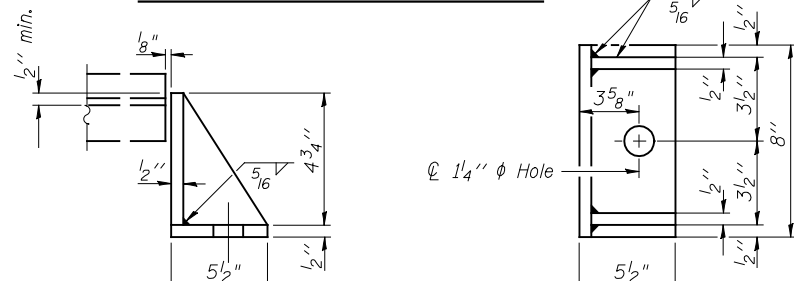
PLAN-PTFE SURFACE



BOTTOM BEARING ASSEMBLY

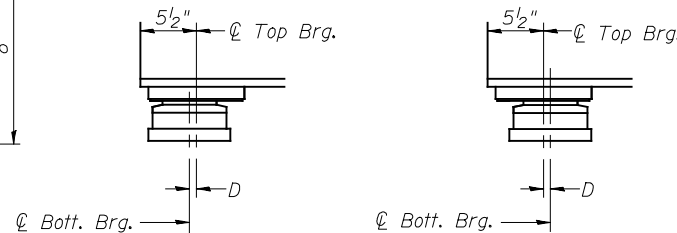


SECTION THRU PTFE



SIDE RETAINER

Equivalent rolled angle with stiffeners will be allowed in lieu of welded plates.



BELOW 50°F.

ABOVE 50°F.

(Move bott. brg. away from fixed brg.) (Move bott. brg. toward fixed brg.)

SETTING ANCHOR BOLTS AT EXP. BRG.

D=1/8" per each 100' of expansion for every 15° temp. change from the normal temp. of 50°F.

Notes:

Anchor bolts shall be ASTM F1554 all-thread (or an Engineer-approved alternate material) of the grade(s) and diameter(s) specified. ASTM A307 Grade C anchor bolts may be used in lieu of ASTM F1554 Grade 36 (Fy=36ksi). The corresponding specified grade of AASHTO M314 anchor bolts may be used in lieu of ASTM F1554.

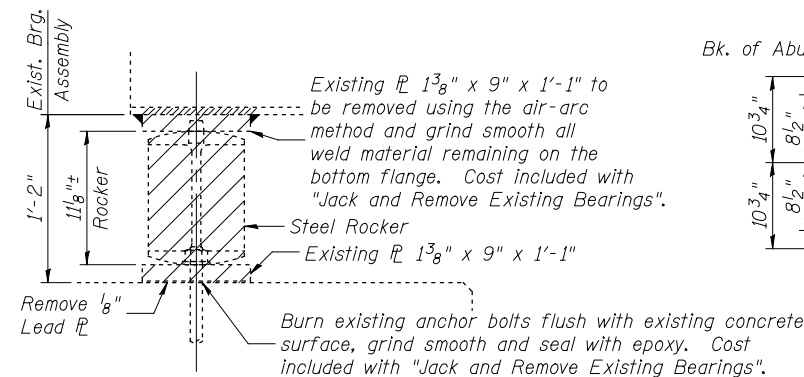
Anchor bolts for Type II bearings shall be placed in holes drilled in the concrete through holes in the bottom bearing plate after members are in place. Side retainers shall be placed after bolts are installed.

Drilled and set anchor bolts shall be installed according to Article 521.06 of the Standard Specifications.

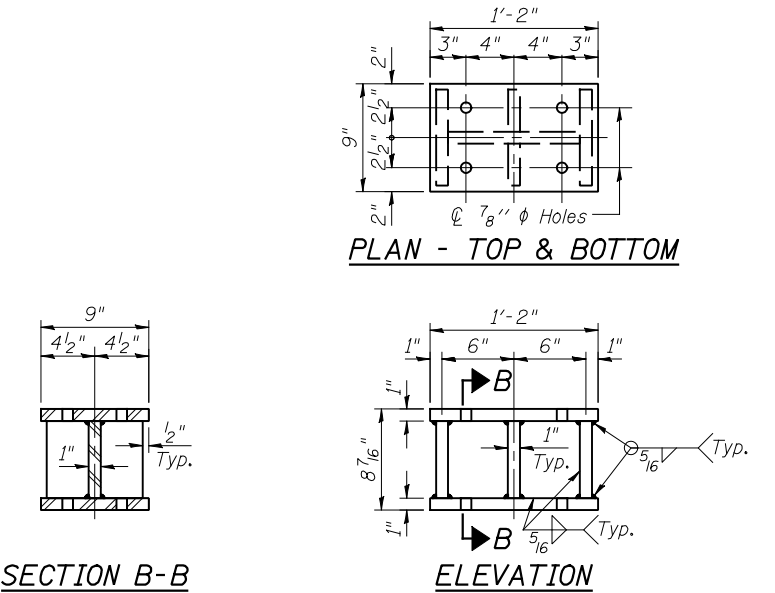
Side retainers and other steel members required for the elastomeric bearing assembly shall be included in the cost of Elastomeric Bearing Assembly, Type II.

The 1/8" PTFE sheet shall be bonded directly to the top steel plate with a two-component, medium viscosity epoxy resin, conforming to the requirements of the Federal Specification MMM-A-134, Type I. The bond agent shall be applied on the full area of the contact surfaces.

Bonding of 1/8" PTFE sheet during vulcanizing process will be permitted provided the process and method of adjusting assembly height is approved by the Engineer.

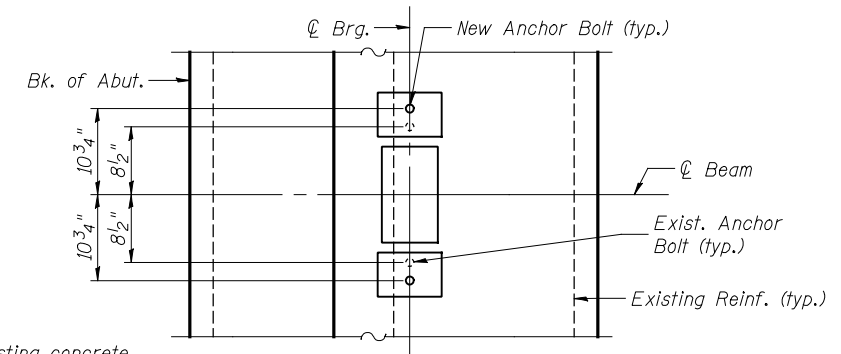


EXISTING BEARING REMOVAL



Notes:

See additional notes on sheet 8 of 10.



ANCHOR BOLT LAYOUT

BILL OF MATERIAL

BEAM REACTION TABLE		
		E. Abut.
R (DL)	(K)	25.0
R (LL)	(K)	36.4
R (Imp)	(K)	10.5
R (Total)	(K)	71.9
Minimum Jack Capacity	(Tons)	40

Item	Unit	EB	WB
Jack and Remove Existing Bearings	Each	6	6
Elastomeric Bearing Assembly Type II	Each	6	6
Furnishing and Erecting Structural Steel	Pound	837	837
Anchor Bolts, 1"	Each	12	12

FILE: J:\INDO\102004_IL-08VW7-I-72_Illopolis\3-LongPoint\Slough\0840163-72C88-009-bearIngs2.dgn
 3/29/2013

I-2E-2 7-1-10 (Modified)

FILE NAME =	USER NAME = DCD	DESIGNED - CMV	REVISED -
... \0840163-72C88-009-bearIngs2.dgn		CHECKED - DCD	REVISED -
PLOT SCALE =		DRAWN - P. Ray	REVISED -
PLOT DATE = 04/02/2013 15:19:01		CHECKED - CMV/DCD	REVISED -

STATE OF ILLINOIS
 DEPARTMENT OF TRANSPORTATION

BEARING DETAILS - EAST ABUTMENT
 STRUCTURE NO. 084-0163(EB) & 084-0164(WB)

F.A.I. RTE.	SECTION	COUNTY	TOTAL SHEETS	SHEET NO.
72	(84-10-3)RS-5	SANGAMON	95	86
STA. 799+18.00		CONTRACT NO. 72C88		
ILLINOIS FED. AID PROJECT				

PART B - SHEET 58 of 67

SHEET NO. 9 OF 10 SHEETS