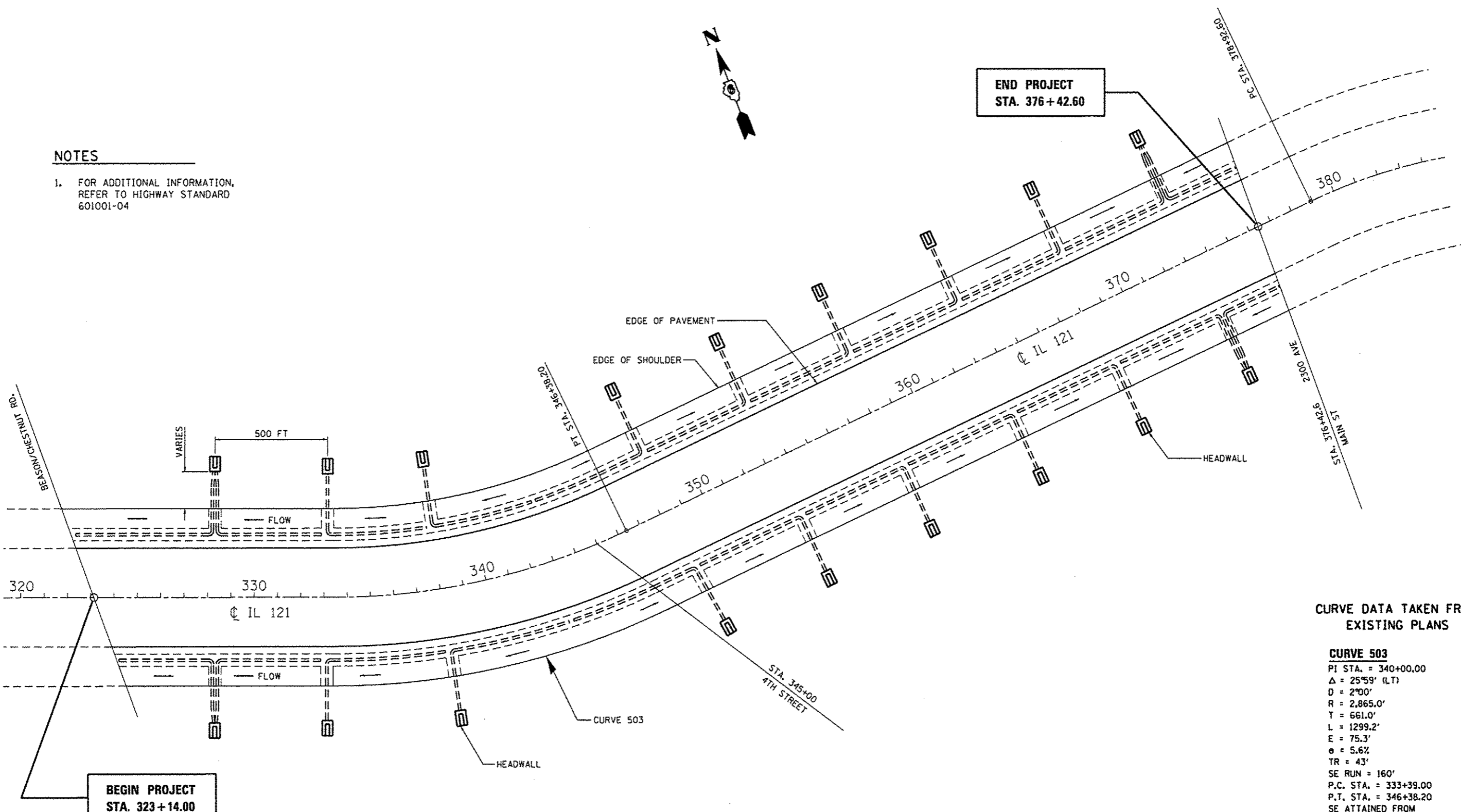


NOTES

- FOR ADDITIONAL INFORMATION, REFER TO HIGHWAY STANDARD 601001-04



**BEGIN PROJECT
STA. 323 + 14.00**

**END PROJECT
STA. 376 + 42.60**

**CURVE DATA TAKEN FROM
EXISTING PLANS**

CURVE 503
 P.I. STA. = 340+00.00
 $\Delta = 25^{\circ}59'$ (LT)
 D = 2'00"
 R = 2,865.0'
 T = 661.0'
 L = 1299.2'
 E = 75.3'
 $e = 5.6\%$
 TR = 43'
 SE RUN = 160'
 P.C. STA. = 333+39.00
 P.T. STA. = 346+38.20
 SE ATTAINED FROM
 STA. 331+89 TO STA. 333+92
 SE REMOVED FROM
 STA. 345+85 TO STA. 347+88

FILE NAME * o:\pwwork\pwwork\shahdm\d8341386\06xxx\shst-plan.dgn	USER NAME * shahdm	DESIGNED - _____	REVISED - _____	STATE OF ILLINOIS DEPARTMENT OF TRANSPORTATION	PLAN VIEW -- SUB-SURFACE DRAINS	F.A.P. RTE. 320	SECTION (134) I-2	COUNTY LOGAN	TOTAL SHEETS 8	SHEET NO. 5
	PLOT SCALE * 40.0000' / in.	CHECKED - _____	REVISED - _____			CONTRACT NO. 72G13	ILLINOIS FED. AID PROJECT			
Default	PLOT DATE * Mar-27-2013 09:56:00AM	DATE - _____	REVISED - _____	SCALE: _____	SHEET _____ OF _____ SHEETS	STA. _____ TO STA. _____				