

STATE OF ILLINOIS
DEPARTMENT OF TRANSPORTATION
DIVISION OF HIGHWAYS

**PROPOSED
HIGHWAY PLANS**

FAP ROUTE 824 (US RTE 45)
SECTION (19,20)RS-4
PROJECT ACF-0824(020)
RESURFACING (3P)
COLES COUNTY
C-97-034-11

FOR INDEX OF SHEETS, SEE SHEET NO. 2

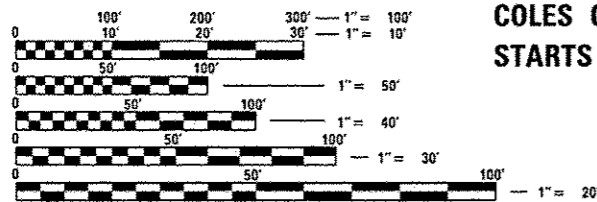
STATION EQUATIONS:

STA. 518 + 99.50 (BK) = STA. 5 + 29.30 (AH)
STA. 380 + 80.00 (BK) = STA. 100 + 00.00 (AH)
STA. 223 + 74.50 (BK) = STA. 505 + 61.40 (AH)

PAVING OMISSIONS:

STA. 73 + 30.67 TO STA. 73 + 89.33
STA. 142 + 50.63 TO STA. 143 + 70.89
STA. 541 + 03.96 TO STA. 541 + 94.04

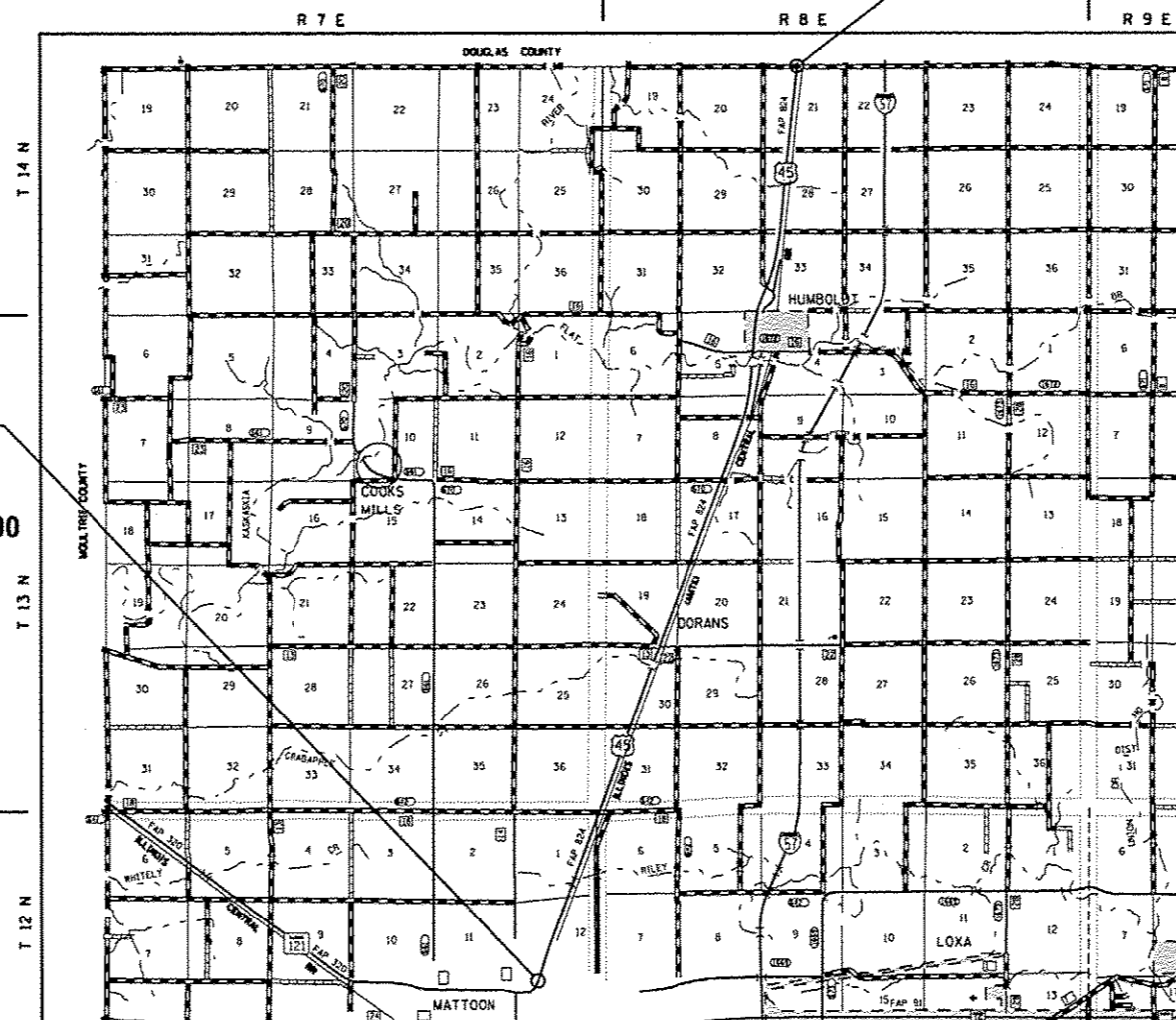
ADT = 3836 (2009)



FULL SIZE PLANS HAVE BEEN PREPARED USING STANDARD ENGINEERING SCALES. REDUCED SIZED PLANS WILL NOT CONFORM TO STANDARD SCALES. IN MAKING MEASUREMENTS ON REDUCED PLANS, THE ABOVE SCALES MAY BE USED.

J.U.L.I.E.
JOINT UTILITY LOCATION INFORMATION FOR EXCAVATION
1-800-892-0123
OR 811

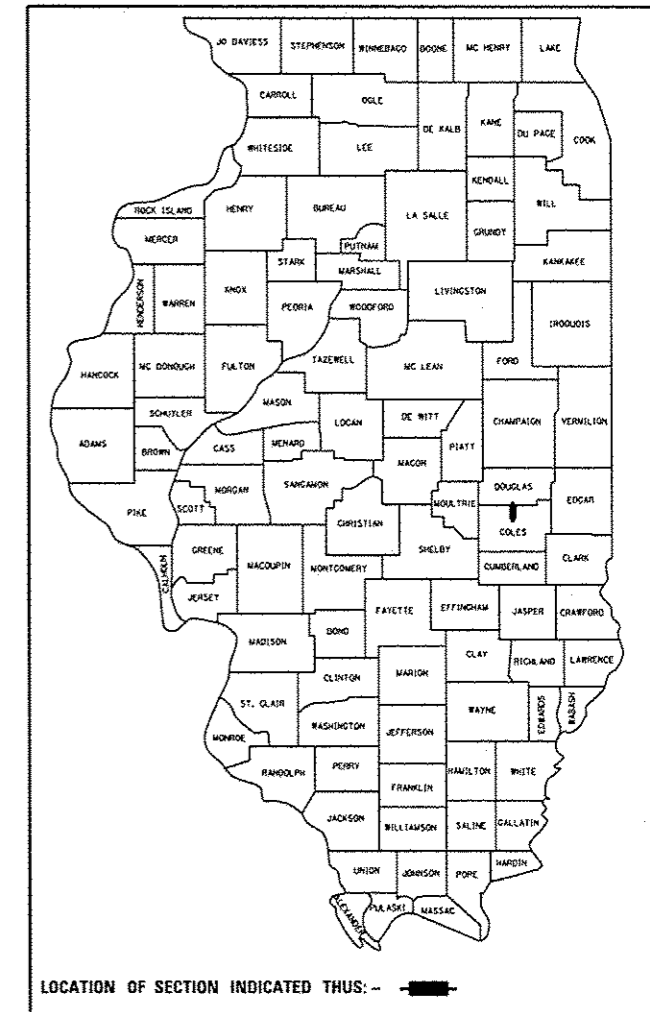
PROJECT ENGINEER: TOM RONAN
PROJECT MANAGER: NEIL SANDSCHAFFER
PHONE: (217)-342-8320
CONTRACT NO. 74511



GROSS LENGTH = 61,494.40 FT. = 11.65 MILES
NET LENGTH = 61,225.40 FT. = 11.60 MILES

| F.A.P. RTE. | SECTION | COUNTY | TOTAL SHEETS | SHEET NO. |
|-------------|-------------|----------|--------------------|-----------|
| 824 | (19,20)RS-4 | COLES | 56 | 1 |
| | | ILLINOIS | CONTRACT NO. 74511 | |

D-97-011-11



LOCATION OF SECTION INDICATED THUS: —

STATE OF ILLINOIS
DEPARTMENT OF TRANSPORTATION
DIVISION OF HIGHWAYS

SUBMITTED Oct 2 2012
Roger L. Drishell
DEPUTY DIRECTOR OF HIGHWAYS, REGION ENGINEER

May 10 2013
John D. Baranzelli, P.E.
acting ENGINEER OF DESIGN AND ENVIRONMENT

May 10 2013
Omer Osman, P.E.
DIRECTOR OF HIGHWAYS, CHIEF ENGINEER

**PRINTED BY THE AUTHORITY
OF THE STATE OF ILLINOIS**