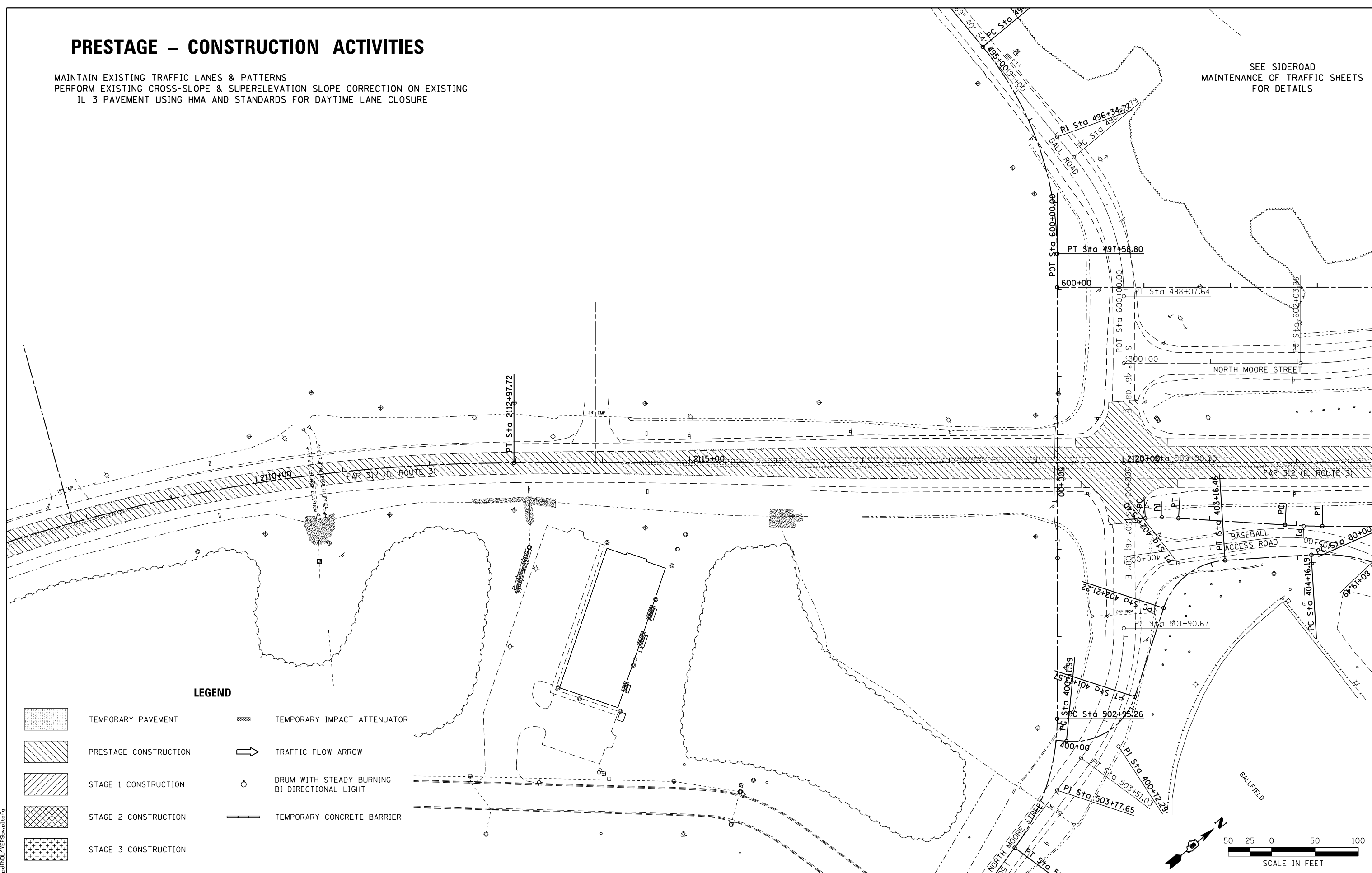


PRESTAGE - CONSTRUCTION ACTIVITIES

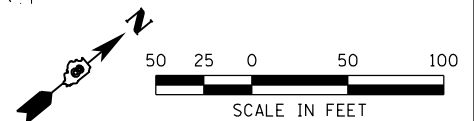
MAINTAIN EXISTING TRAFFIC LANES & PATTERNS
 PERFORM EXISTING CROSS-SLOPE & SUPERELEVATION SLOPE CORRECTION ON EXISTING
 IL 3 PAVEMENT USING HMA AND STANDARDS FOR DAYTIME LANE CLOSURE

SEE SIDEROAD
 MAINTENANCE OF TRAFFIC SHEETS
 FOR DETAILS



LEGEND

- | | | | |
|--|-----------------------|--|--|
| | TEMPORARY PAVEMENT | | TEMPORARY IMPACT ATTENUATOR |
| | PRESTAGE CONSTRUCTION | | TRAFFIC FLOW ARROW |
| | STAGE 1 CONSTRUCTION | | DRUM WITH STEADY BURNING
BI-DIRECTIONAL LIGHT |
| | STAGE 2 CONSTRUCTION | | TEMPORARY CONCRETE BARRIER |
| | STAGE 3 CONSTRUCTION | | |



LAST SAVED = 1/25/2013
 PEN TABLE = 1024x1024
 PLOT DRIVER = pdfplotlayers.ctb

FILE NAME =	USER NAME = beriechmann	DESIGNED -	REVISED -
1:\1001100\Phase II - 76817\Cad\T\Plans\063_0876817-sht-Staging-0-IL3-03.dgn		DRAWN -	REVISED -
		CHECKED -	REVISED -
		DATE -	REVISED -

**STATE OF ILLINOIS
 DEPARTMENT OF TRANSPORTATION**

**HORNER &
 SHIRIN, INC.
 ENGINEERS**

**SUGGESTED STAGES OF CONSTRUCTION
 AND TRAFFIC CONTROL**
 PRESTAGE - STA 2115+79.04

SCALE: 1" = 50' SHEET NO. 12 OF 46 SHEETS STA. 2108+00.00 TO STA. 2122+00.00

F.A.P. RTE.	SECTION	COUNTY	TOTAL SHEETS	SHEET NO.
312	68-WRS-1	MONROE	760	171
CONTRACT NO. 76817				

ILLINOIS FED. AID PROJECT