

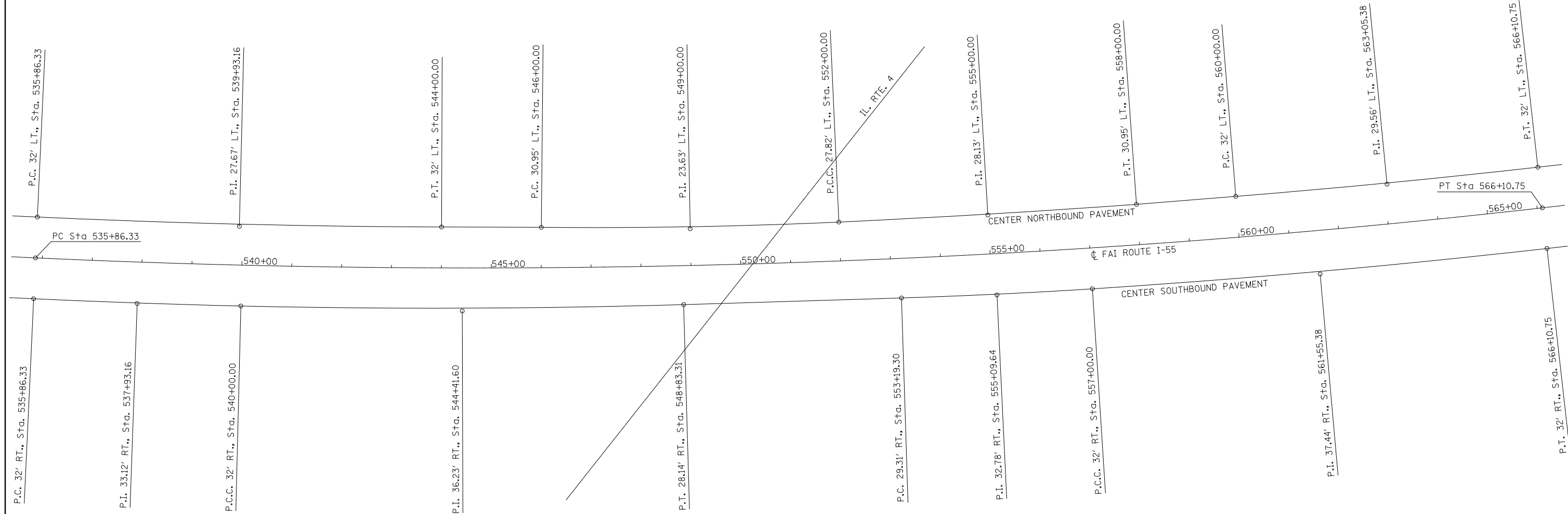


CURVE DATA FOR NORTHBOUND PAVEMENT  
 P.I. 27.67' LT., STA. 539+93.16  
 $\Delta = 2^{\circ}26'28''$  (LT.)  
 D = 0'18'02"  
 R = 19,066.60'  
 T = 406.22'  
 L = 812.31'  
 E = 4.33'  
 SE = N.C.

CURVE DATA FOR NORTHBOUND PAVEMENT  
 P.I. 23.63' LT., STA. 549+00.00  
 $\Delta = 3^{\circ}06'11''$  (LT.)  
 D = 0'31'04"  
 R = 11,063.06'  
 T = 299.64'  
 L = 599.13'  
 E = 4.06'  
 S.E. = 0.019'/FT.  
 S.E. ATTAINED STA. 545+20 TO STA. 546+22  
 S.E. REMOVED STA. 551+83 TO STA. 552+85

CURVE DATA FOR NORTHBOUND PAVEMENT  
 P.I. 28.13' LT., STA. 555+00.00  
 $\Delta = 1^{\circ}22'47''$  (LT.)  
 D = 0'13'49"  
 R = 24,877.02'  
 T = 299.55'  
 L = 599.08'  
 E = 1.80'  
 S.E. = N.C.

CURVE DATA FOR NORTHBOUND PAVEMENT  
 P.I. 29.56' LT., STA. 563+05.38  
 $\Delta = 1^{\circ}49'56''$  (LT.)  
 D = 0'18'02"  
 R = 19,066.60'  
 T = 304.89'  
 L = 609.73'  
 E = 2.44'  
 S.E. = N.C.



CURVE DATA FOR SOUTHBOUND PAVEMENT  
 P.I. 33.12' RT., STA. 537+93.16  
 $\Delta = 1^{\circ}14'28''$  (LT.)  
 D = 0'17'58"  
 R = 19,130.60'  
 T = 207.19'  
 L = 414.37'  
 E = 1.12'  
 SE = N.C.

CURVE DATA FOR SOUTHBOUND PAVEMENT  
 P.I. 36.23' RT., STA. 544+41.60  
 $\Delta = 2^{\circ}55'18''$  (LT.)  
 D = 0'19'49"  
 R = 17,350.39'  
 T = 442.46'  
 L = 884.73'  
 E = 5.64'  
 SE = N.C.

CURVE DATA FOR SOUTHBOUND PAVEMENT  
 P.I. 32.78' RT., STA. 555+09.64  
 $\Delta = 1^{\circ}50'56''$  (LT.)  
 D = 0'29'06"  
 R = 11,816.95'  
 T = 190.68'  
 L = 381.34'  
 E = 1.54'  
 SE = 0.018'/FT.  
 S.E. ATTAINED STA. 552+36 TO STA. 553+35  
 S.E. REMOVED STA. 556+80 TO STA. 557+79

CURVE DATA FOR SOUTHBOUND PAVEMENT  
 P.I. 37.44' RT., STA. 561+55.38  
 $\Delta = 2^{\circ}43'56''$  (LT.)  
 D = 0'17'58"  
 R = 19,130.60'  
 T = 456.23'  
 L = 912.28'  
 E = 5.44'  
 SE = N.C.

FILE NAME = ...load\10876D99-shit-Geom.dgn	USER NAME = \$(USER)	DESIGNED -	REVISED -
Johnson, Depp & Quisenberry CONSULTING ENGINEERS Springfield, Illinois	PLOT SCALE = 200.00' / IN.	DRAWN -	REVISED -
PLOT DATE = 02/02/2012 17:31:28	DATE -	CHECKED -	REVISED -
		DATE -	REVISED -

**STATE OF ILLINOIS  
DEPARTMENT OF TRANSPORTATION**

**HORIZONTAL ALIGNMENT FOR NARROW MEDIAN**

SCALE: SHEET NO. OF SHEETS STA. TO STA.

F.A.I. RTE.	SECTION	COUNTY	TOTAL SHEETS	SHEET NO.
55	60-(1,2)RS-3	MADISON	212	34
CONTRACT NO. 76D99				
ILLINOIS FED. AID PROJECT				