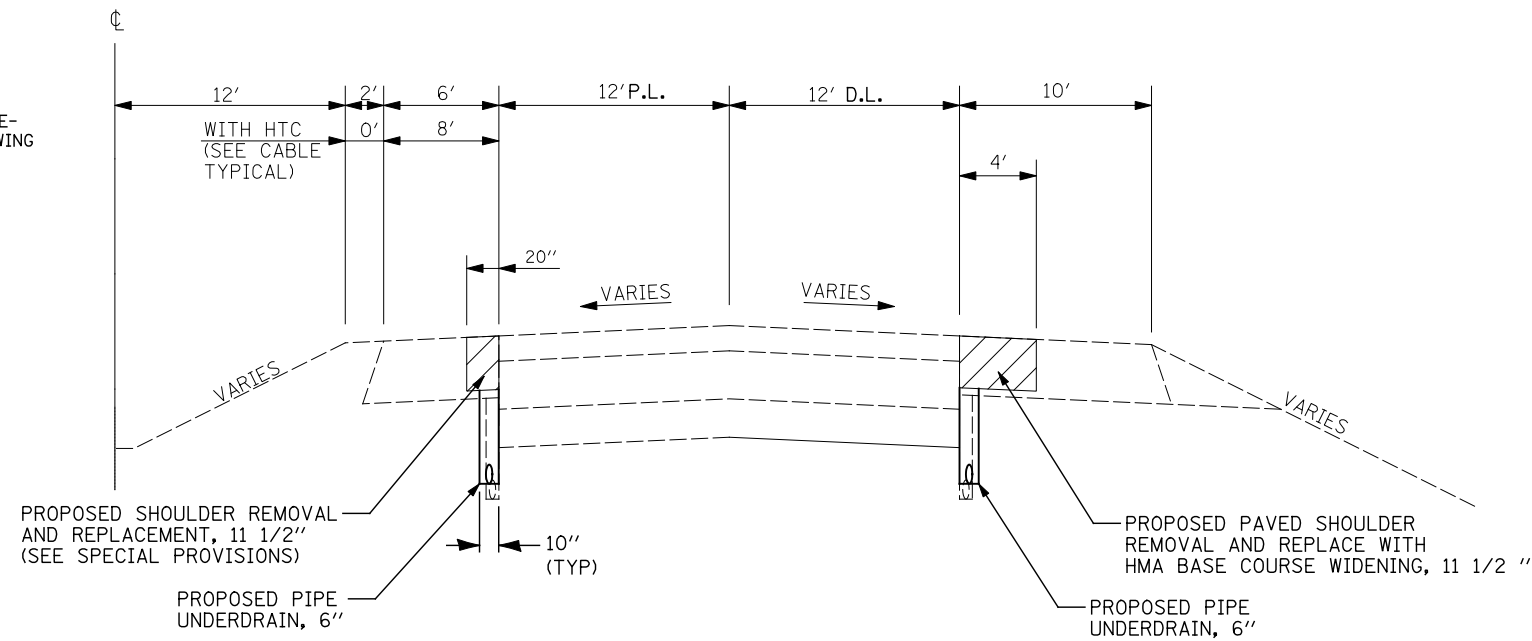
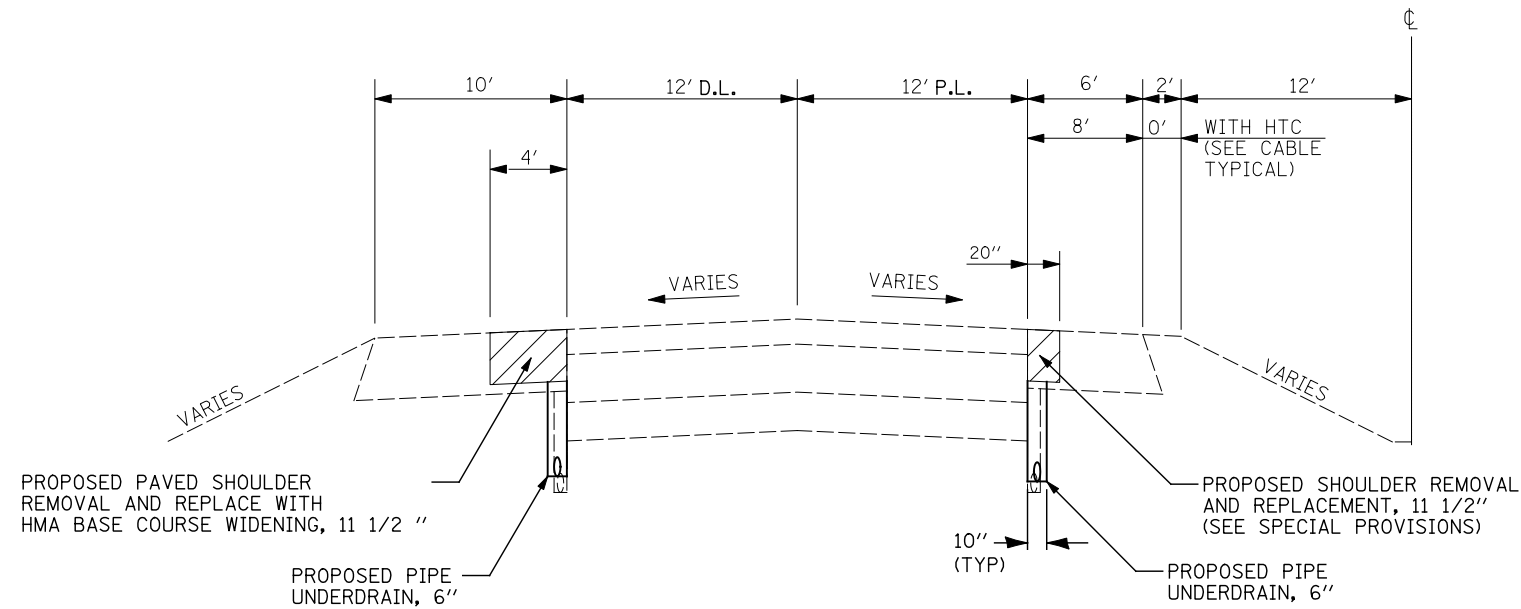


NOTE: TO PROVIDE ADEQUATE DRAINAGE FOR THE PIPE UNDERDRAINS INTO THE MEDIAN DITCH, PLACE THE FLOWLINES OF THE PASSING-LANE-SHOULDER PIPE UNDERDRAINS AT THE DEPTHS SHOWN FOR THE FOLLOWING LOCATIONS. AT ALL OTHER LOCATIONS, THE DEPTHS SHOULD BE 24". DEPTHS ARE MEASURED FROM EXISTING PAVEMENT.

STA. TO STA.	DEPTH
STA. 525+00 TO STA. 534+00	18"
STA. 539+00 TO STA. 548+50	18"
STA. 548+50 TO STA. 555+00	12"
STA. 555+00 TO STA. 558+00	18"



**S.B. F.A.I. ROUTE 55 PRE-STAGE CONSTRUCTION TYPICAL SECTION  
STA. 519+00.00 TO 670+00.00  
(LOOKING SOUTH)**



NOTE: TO PROVIDE ADEQUATE DRAINAGE FOR THE PIPE UNDERDRAINS INTO THE MEDIAN DITCH, PLACE THE FLOWLINES OF THE PASSING-LANE-SHOULDER PIPE UNDERDRAINS AT THE DEPTHS SHOWN FOR THE FOLLOWING LOCATIONS. AT ALL OTHER LOCATIONS, THE DEPTHS SHOULD BE 24". DEPTHS ARE MEASURED FROM EXISTING PAVEMENT.

STA. TO STA.	DEPTH
STA. 539+00 TO STA. 544+00	18"
STA. 548+50 TO STA. 550+24	12"
STA. 550+24 TO STA. 555+00	12"
STA. 555+00 TO STA. 558+00	18"

**N.B. F.A.I. ROUTE 55 PRE-STAGE CONSTRUCTION TYPICAL SECTION  
STA. 519+00.00 TO 670+00.00  
(LOOKING SOUTH)**