

to @ I-55

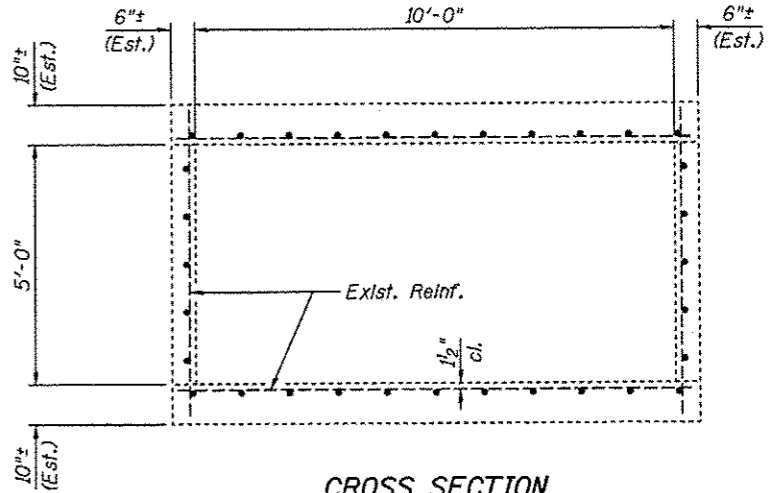
@ Frontage Rd.

Approx. Ground Line

8'-0"

5'-0"

**LONGITUDINAL SECTION**



**CROSS SECTION**

Spalled concrete with exposed reinf.

40 sf

80 sf

Step In Bottom Slab

10'-0"

@ Culvert

40'-0"±

**PLAN OF BOTTOM SLAB**

Notes:  
Repair areas are estimated, the Engineer shall determine actual repair locations and record them on the As-Built plans.

If the depth of the concrete removal exceeds about 5" (measured from the estimated original top of concrete before spalling), over an area extending more than 4 feet measured parallel to the sidewalls, then Temporary Bracing between the bottom of the sidewalls may be required to prevent the bottom slab from buckling and/or the sidewalls from moving inward due to lateral soil pressure on the sidewalls. The possible need for this bracing shall be addressed during construction, as discussed in the Special Provision for Structural Repair of Concrete.

**BILL OF MATERIAL**

Item	Unit	Total
Structural Repair of Concrete (Depth > 5")	Sq Ft	40
Structural Repair of Concrete (Depth ≤ 5")	Sq Ft	80



Signed: *David Drpp*  
Date: *2-1-2012*  
Lic. Expires: 11-30-2012

SAVE DATE: 2/1/2012

FILE NAME *	USER NAME * DCD	DESIGNED - DCD	REVISED -
...1060000-76D99-00-BoxCulvertRepairs.dgn		CHECKED -	REVISED -
		DRAWN - P. Roy	REVISED -
		CHECKED - DCD	REVISED -

**STATE OF ILLINOIS  
DEPARTMENT OF TRANSPORTATION**

**10' x 5' BOX CULVERT REPAIRS  
AT STA. 636+00 (+/-)**

SHEET NO. 1 OF 1 SHEETS

F.A.I. RTE.	SECTION	COUNTY	TOTAL SHEETS	SHEET NO.
55	60-1,2(RS-3)	MADISON	212	106
STA. 636+00 (+/-)		CONTRACT NO. 76D99		

ILLINOIS FED. AID PROJECT