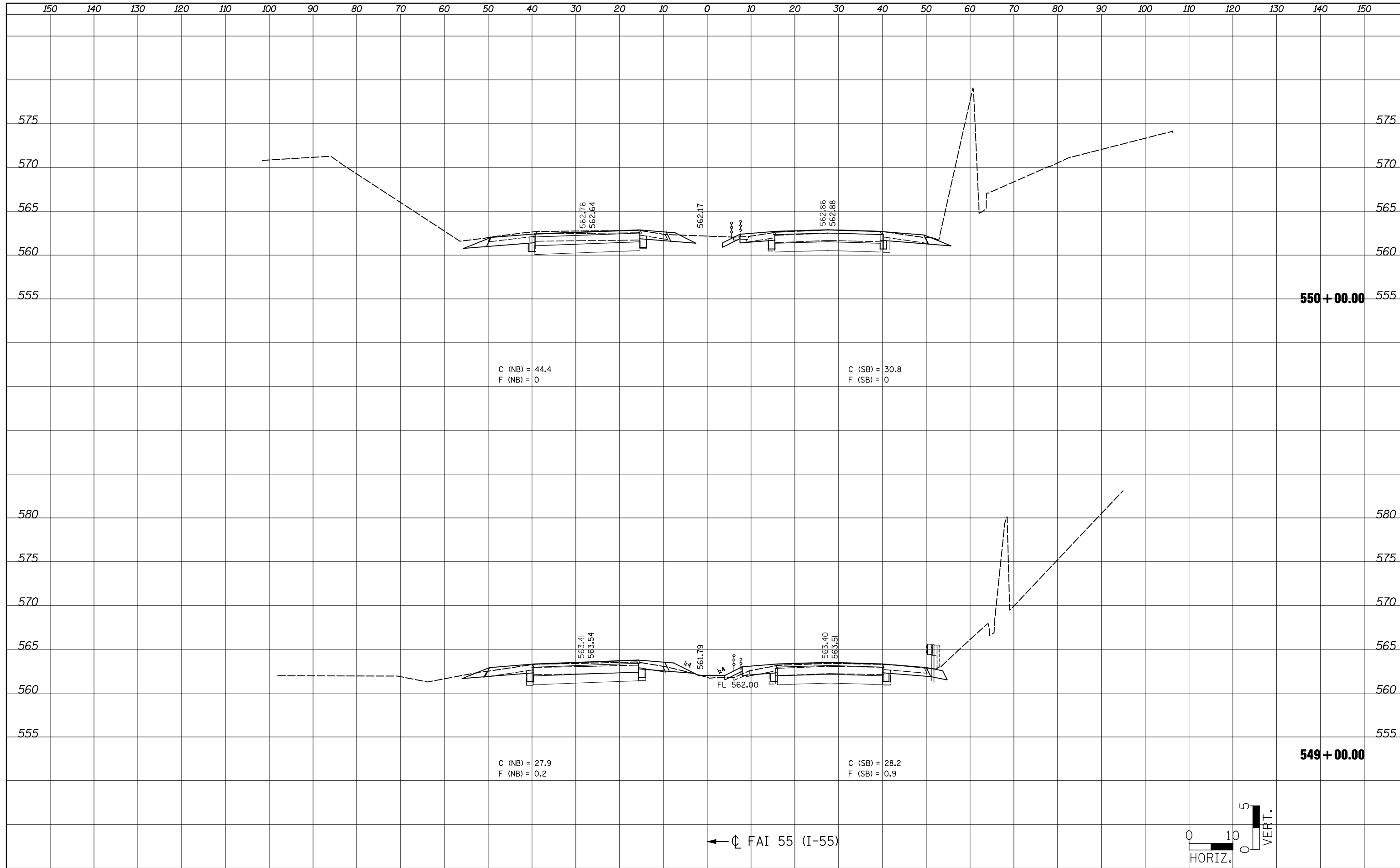


DATE	
BY	
SURVEYED	
PLOTTED	
TEMPLATE	
NOTE BOOK	
AREAS CHECKED	
NO.	

DATE	
BY	
SURVEYED	
PLOTTED	
TEMPLATE	
NOTE BOOK	
AREAS CHECKED	
NO.	



550 + 00.00

549 + 00.00

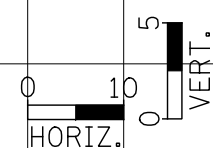
C (NB) = 44.4
F (NB) = 0

C (SB) = 30.8
F (SB) = 0

C (NB) = 27.9
F (NB) = 0.2

C (SB) = 28.2
F (SB) = 0.9

← C FAI 55 (I-55)



FILE NAME = ... \CADD\0876D99-shr-xssht-ML.dgn

USER NAME = \$(USER)	DESIGNED -	REVISED -
PLOT SCALE = 20.0000' / IN.	DRAWN -	REVISED -
PLOT DATE = 02/02/2012 19:15:08	CHECKED -	REVISED -
	DATE -	REVISED -

**STATE OF ILLINOIS
DEPARTMENT OF TRANSPORTATION**

FAI 55 CROSS SECTIONS

SCALE: SHEET NO. OF SHEETS STA. 549+00.00 TO STA. 550+00.00

F.A.I. RTE.	SECTION	COUNTY	TOTAL SHEETS	SHEET NO.
55	60-(1,2)RS-3	MADISON	212	135
CONTRACT NO. 76D99			ILLINOIS FED. AID PROJECT	