

INDEX OF SHEETS

1	COVER SHEET
2	GENERAL NOTES
3-5A	SUMMARY OF QUANTITIES
6-9	TYPICAL SECTIONS
10-12	SCHEDULE OF QUANTITIES
13-16	ALIGNMENTS, TIES, AND BENCHMARKS
17-22	PLAN & PROFILES
22A	EXPANDED POLYSTYRENE FILL PLAN & DETAILS
23-25	EROSION AND SEDIMENT CONTROL PLANS
26-31	DRAINAGE PLAN & PROFILES
31A-31B	GROUND IMPROVEMENT PLAN
31C	MISSOURI AVENUE RUNAROUND PLAN & PROFILE
32-37A	SUBSURFACE UNDERGROUND ENGINEERING PLANS
38A	DRAINAGE BASIN D-2 LAYOUT (EXCAVATION)
38	DRAINAGE BASIN D-2 PLAN (FINAL GRADING)
39	DRAINAGE BASIN D-2 LAYOUT (FINAL GRADING)
40A	DRAINAGE BASIN GADDDY LAYOUT (EXCAVATION)
40	DRAINAGE BASIN GADDDY PLAN (FINAL GRADING)
41	DRAINAGE BASIN GADDDY LAYOUT (FINAL GRADING)
42A	DRAINAGE BASIN D-8 LAYOUT (EXCAVATION)
42	DRAINAGE BASIN D-8 PLAN (FINAL GRADING)
43	DRAINAGE BASIN D-8 LAYOUT (FINAL GRADING)
43A	CRIS-CROSS LAYOUT (EXCAVATION)
43B	CRIS-CROSS LAYOUT (FINAL GRADING)
44-48	RIGHT OF WAY PLANS
49-50	INTERSECTION DETAILS
51-53	REMOVAL PLANS
54	STABILIZED CONSTRUCTION ENTRANCE DETAIL
55	DRAINAGE DETAILS
56-89	CROSS SECTIONS - RELOCATED IL ROUTE 3
90-94	CROSS SECTIONS - RIVER PARK DRIVE CONNECTOR
95-117	CROSS SECTIONS - RELOCATED MISSOURI AVENUE
118-121	CROSS SECTIONS - TEMPORARY RAILROAD ACCESS ROAD

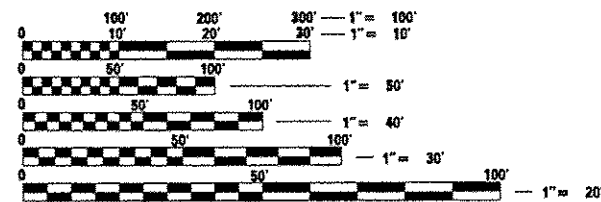
FOR HIGHWAY STANDARDS, SEE SHEET NO. 2

FUNCTIONAL CLASSIFICATION

**RELOCATED IL ROUTE 3
URBAN EXPRESSWAY**
ADT = 12,000 (2004) 16,000 (2024)
DESIGN SPEED = 50 MPH

**RIVER PARK DRIVE CONNECTOR
URBAN COLLECTOR**
DHV = 670 (2004), 830 (2024)
DESIGN SPEED = 30 MPH

**RELOCATED MISSOURI AVENUE
URBAN COLLECTOR**
DHV = 330 (2004) 310 (2024)
DESIGN SPEED = 35 MPH



FULL SIZE PLANS HAVE BEEN PREPARED USING STANDARD ENGINEERING SCALES. REDUCED SIZED PLANS WILL NOT CONFORM TO STANDARD SCALES. IN MAKING MEASUREMENTS ON REDUCED PLANS, THE ABOVE SCALES MAY BE USED.

J.U.L.I.E.
JOINT UTILITY LOCATION INFORMATION FOR EXCAVATION
1-800-892-0123
OR 811

PROJECT ENGINEER : TIMOTHY B. PADGETT (618) 346-3325
PROJECT MANAGER : DONALD R. HAYDEN (618) 346-3194

CONTRACT NO. 76F70

REVISI^oN 6-5-13

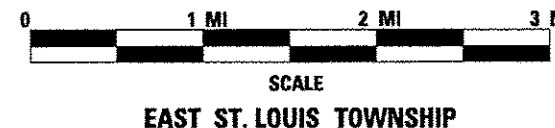
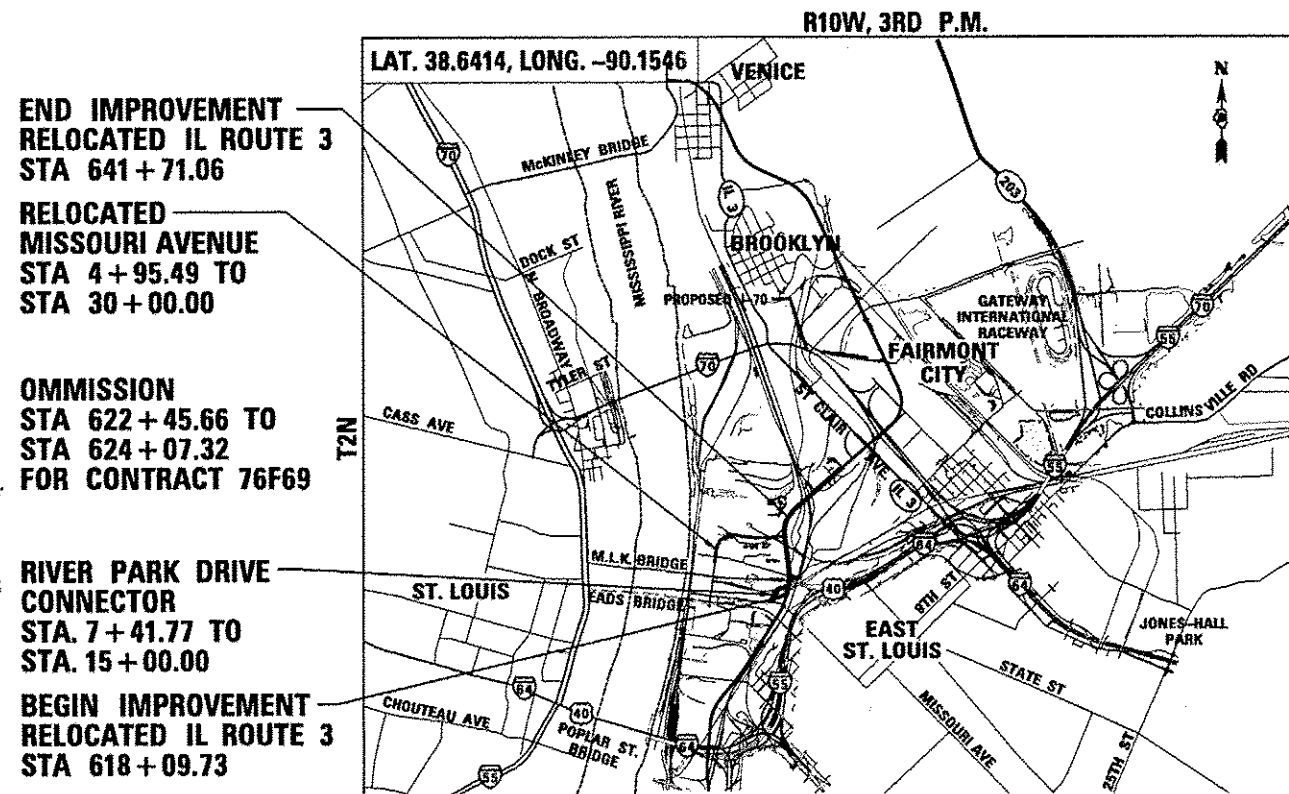
STATE OF ILLINOIS
DEPARTMENT OF TRANSPORTATION

DIVISION OF HIGHWAYS

**PROPOSED
HIGHWAY PLANS**

FAP ROUTE 788 (RELOCATED IL RTE 3)
SECTION 520-1-2-1
PROJECT
ST. CLAIR COUNTY
C-98-066-12

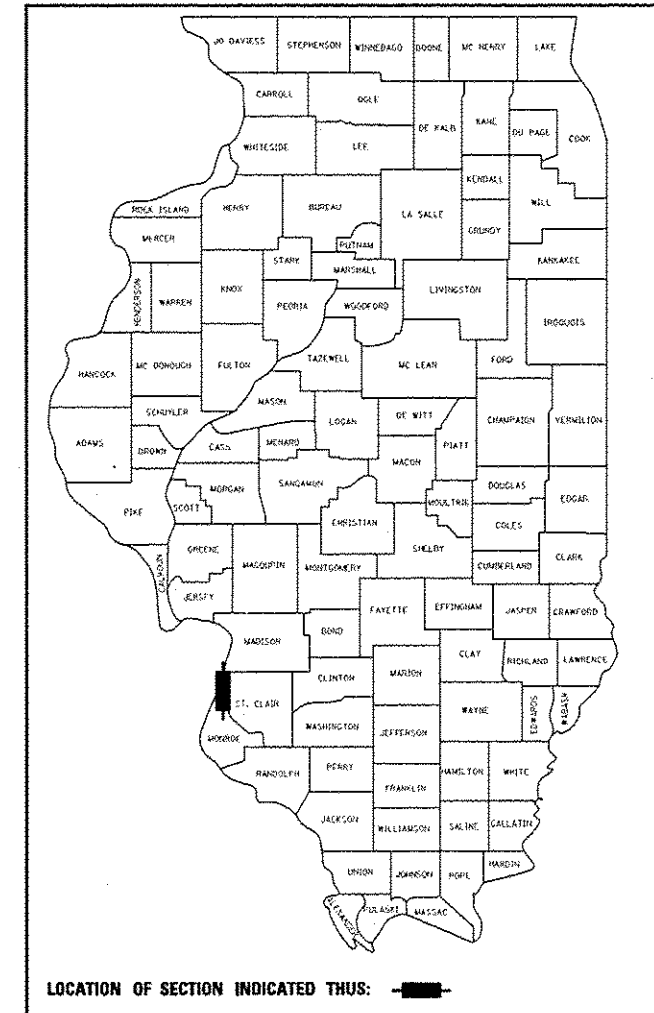
PROPOSED RELOCATED IL ROUTE 3 -
RIVER PARK DRIVE TO 2500' NORTH OF
RIVER PARK DRIVE, RELOCATED MISSOURI AVENUE
AND RIVER PARK DRIVE CONNECTOR



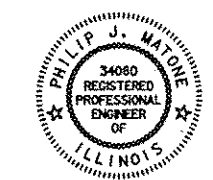
GROSS LENGTH OF PROJECT: 5,624.87' (1.065 MI)
NET LENGTH OF PROJECT: 5,463.21' (1.035 MI)
RIVER PARK DRIVE CONNECTOR: 758.23' (0.144 MI)
RELOCATED MISSOURI AVENUE: 2,504.51' (0.474 MI)
RELOCATED IL ROUTE 3 GROSS: 2,381.33' (0.447 MI)
RELOCATED IL ROUTE 3 NET: 2,199.87' (0.417 MI)

F.A.P. RTE.	SECTION	COUNTY	TOTAL SHEETS	SHEET NO.
788	520-1-2-1	ST. CLAIR	121	1
FED. ROAD DIST. NO.	ILLINOIS	CONTRACT NO.	76F70	

121 + 6 = 127
D-98-058-09



FINAL SUBMITTAL



SIGNATURE: Philip Matone
EXPIRES: 11/30/2013
DATE: 2/6/13

STATE OF ILLINOIS
DEPARTMENT OF TRANSPORTATION
DIVISION OF HIGHWAYS

SUBMITTED February 8 2013

PHILIP J. MATONE
REGISTERED PROFESSIONAL ENGINEER OF ILLINOIS

John D. Baranelli, P.E. Jr.
ENGINEER OF DESIGN AND ENVIRONMENT

May 10 2013
Omer Osman, P.E. Jr.
DIRECTOR OF HIGHWAYS, CHIEF ENGINEER

**PRINTED BY THE AUTHORITY
OF THE STATE OF ILLINOIS**