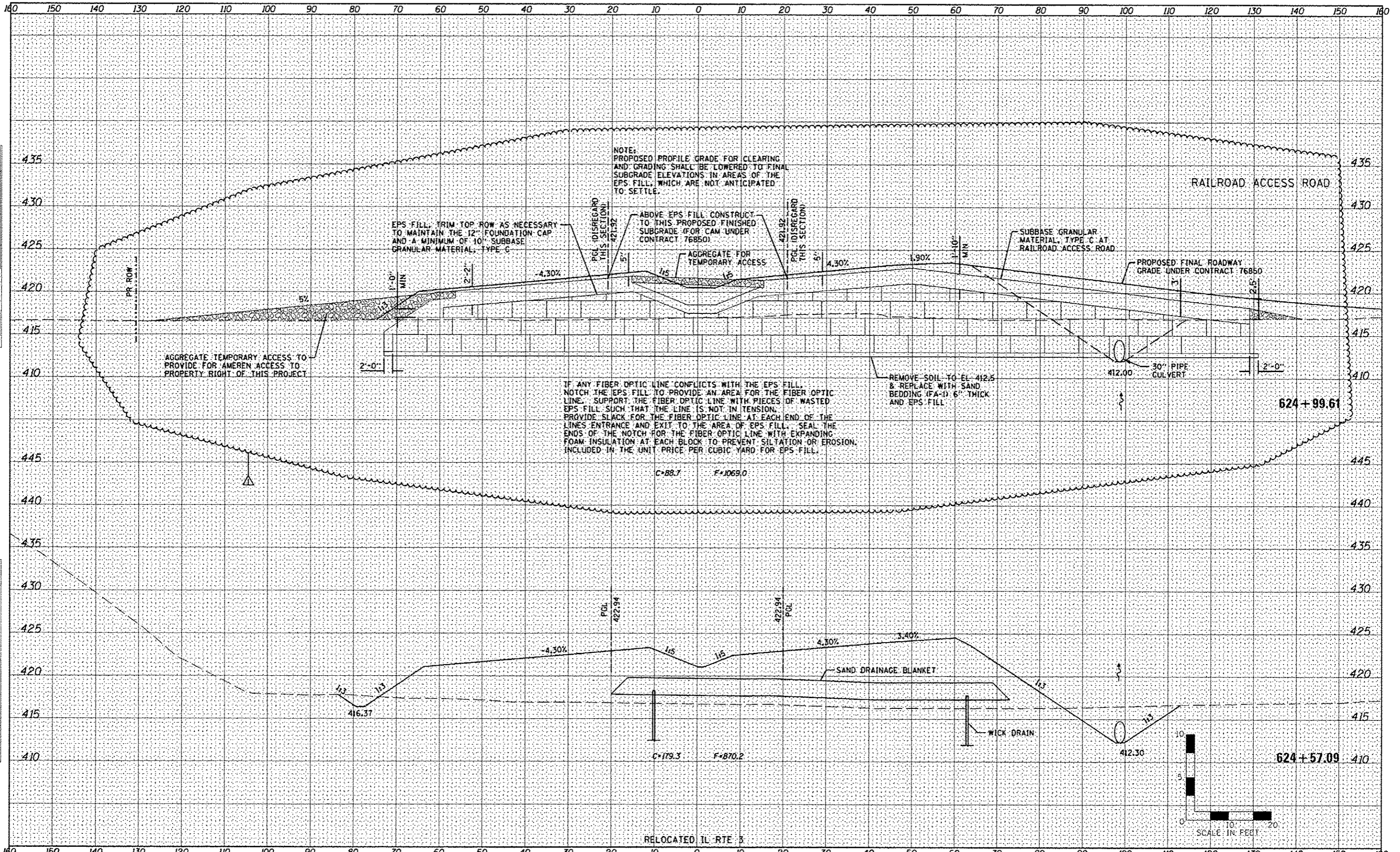


DATE	
BY	
DESIGNED	
DRAWN	
CHECKED	
DATE	
BY	
DESIGNED	
DRAWN	
CHECKED	
DATE	
BY	
DESIGNED	
DRAWN	
CHECKED	
DATE	
BY	
DESIGNED	
DRAWN	
CHECKED	
DATE	
BY	
DESIGNED	
DRAWN	
CHECKED	
DATE	

DATE	
BY	
DESIGNED	
DRAWN	
CHECKED	
DATE	
BY	
DESIGNED	
DRAWN	
CHECKED	
DATE	
BY	
DESIGNED	
DRAWN	
CHECKED	
DATE	
BY	
DESIGNED	
DRAWN	
CHECKED	
DATE	
BY	
DESIGNED	
DRAWN	
CHECKED	
DATE	



NOTE: PROPOSED PROFILE GRADE FOR CLEARING AND GRADING SHALL BE LOWERED TO FINAL SUBGRADE ELEVATIONS IN AREAS OF THE EPS FILL, WHICH ARE NOT ANTICIPATED TO SETTLE.

EPS FILL: TRIM TOP ROW AS NECESSARY TO MAINTAIN THE 12" FOUNDATION CAP AND A MINIMUM OF 10" SUBBASE GRANULAR MATERIAL, TYPE G

ABOVE EPS FILL CONSTRUCT TO THIS PROPOSED FINISHED SUBGRADE (FOR CAM UNDER CONTRACT 76850)

AGGREGATE TEMPORARY ACCESS TO PROVIDE FOR AMEREN ACCESS TO PROPERTY RIGHT OF THIS PROJECT

IF ANY FIBER OPTIC LINE CONFLICTS WITH THE EPS FILL, NOTCH THE EPS FILL TO PROVIDE AN AREA FOR THE FIBER OPTIC LINE. SUPPORT THE FIBER OPTIC LINE WITH PIECES OF WASTED EPS FILL SUCH THAT THE LINE IS NOT IN TENSION. PROVIDE SLACK FOR THE FIBER OPTIC LINE AT EACH END OF THE LINE'S ENTRANCE AND EXIT TO THE AREA OF EPS FILL. SEAL THE ENDS OF THE NOTCH FOR THE FIBER OPTIC LINE WITH EXPANDING FOAM INSULATION AT EACH BLOCK TO PREVENT SILTATION OR EROSION. INCLUDED IN THE UNIT PRICE PER CUBIC YARD FOR EPS FILL.

REMOVE SOIL TO EL. 412.5 & REPLACE WITH SAND BEDDING (FA-1) 6" THICK AND EPS FILL

SCALE IN FEET
0 5 10 20



USER NAME	•USERS
DESIGNED	JJO
DRAWN	JJO
CHECKED	PJM
DATE	10/18/12
PLOT SCALE	•SCALE*
PLOT DATE	•DATE*

DESIGNED	JJO
DRAWN	JJO
CHECKED	PJM
DATE	10/18/12

REVISED	02/08/13
REVISED	6-5-13
REVISED	
REVISED	

STATE OF ILLINOIS
DEPARTMENT OF TRANSPORTATION

RELOCATED IL RTE 3
CROSS SECTIONS

SCALE: SHEET NO. OF SHEETS STA. 624+57.09 TO STA. 624+99.61

F.A.P. RTE.	SECTION	COUNTY	TOTAL SHEETS	SHEET NO.
788	520-1-2-1	ST. CLAIR	121	67
				CONTRACT NO. 76F70
ILLINOIS FED. AID PROJECT				