

INDEX OF SHEETS

- 1 COVER SHEET
- 2 GENERAL NOTES
- 3-5A SUMMARY OF QUANTITIES
- 6-9 TYPICAL SECTIONS
- 10-12 SCHEDULE OF QUANTITIES
- 13-16 ALIGNMENTS, TIES, AND BENCHMARKS
- 17-22 PLAN & PROFILES
- 22A EXPANDED POLYSTYRENE FILL PLAN & DETAILS
- 23-25 EROSION AND SEDIMENT CONTROL PLANS
- 26-31 DRAINAGE PLAN & PROFILES
- 31A-31B GROUND IMPROVEMENT PLAN
- 31C MISSOURI AVENUE RUNAROUND PLAN & PROFILE
- 32-37A SUBSURFACE UNDERGROUND ENGINEERING PLANS
- 38A DRAINAGE BASIN D-2 LAYOUT (EXCAVATION)
- 38 DRAINAGE BASIN D-2 PLAN (FINAL GRADING)
- 39 DRAINAGE BASIN D-2 LAYOUT (FINAL GRADING)
- 40A DRAINAGE BASIN GADDDY LAYOUT (EXCAVATION)
- 40 DRAINAGE BASIN GADDDY PLAN (FINAL GRADING)
- 41 DRAINAGE BASIN GADDDY LAYOUT (FINAL GRADING)
- 42A DRAINAGE BASIN D-8 LAYOUT (EXCAVATION)
- 42 DRAINAGE BASIN D-8 PLAN (FINAL GRADING)
- 43 DRAINAGE BASIN D-8 LAYOUT (FINAL GRADING)
- 43A CRIS-CROSS LAYOUT (EXCAVATION)
- 43B CRIS-CROSS LAYOUT (FINAL GRADING)
- 44-48 RIGHT OF WAY PLANS
- 49-50 INTERSECTION DETAILS
- 51-53 REMOVAL PLANS
- 54 STABILIZED CONSTRUCTION ENTRANCE DETAIL
- 55 DRAINAGE DETAILS
- 56-89 CROSS SECTIONS - RELOCATED IL ROUTE 3
- 90-94 CROSS SECTIONS - RIVER PARK DRIVE CONNECTOR
- 95-117 CROSS SECTIONS - RELOCATED MISSOURI AVENUE
- 118-121 CROSS SECTIONS - TEMPORARY RAILROAD ACCESS ROAD

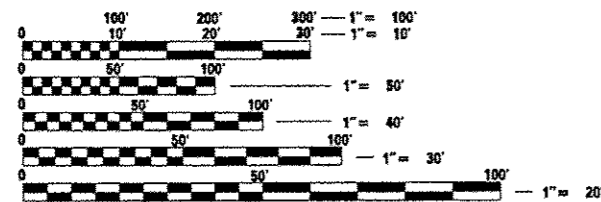
FOR HIGHWAY STANDARDS, SEE SHEET NO. 2

FUNCTIONAL CLASSIFICATION

**RELOCATED IL ROUTE 3
URBAN EXPRESSWAY**
ADT = 12,000 (2004) 16,000 (2024)
DESIGN SPEED = 50 MPH

**RIVER PARK DRIVE CONNECTOR
URBAN COLLECTOR**
DHV = 670 (2004), 830 (2024)
DESIGN SPEED = 30 MPH

**RELOCATED MISSOURI AVENUE
URBAN COLLECTOR**
DHV = 330 (2004) 310 (2024)
DESIGN SPEED = 35 MPH



FULL SIZE PLANS HAVE BEEN PREPARED USING STANDARD ENGINEERING SCALES. REDUCED SIZED PLANS WILL NOT CONFORM TO STANDARD SCALES. IN MAKING MEASUREMENTS ON REDUCED PLANS, THE ABOVE SCALES MAY BE USED.

J.U.L.I.E.
JOINT UTILITY LOCATION INFORMATION FOR EXCAVATION
1-800-892-0123
OR 811

PROJECT ENGINEER : TIMOTHY B. PADGETT (618) 346-3325
PROJECT MANAGER : DONALD R. HAYDEN (618) 346-3194

CONTRACT NO. 76F70

REVISI^oN 6-5-13

STATE OF ILLINOIS
DEPARTMENT OF TRANSPORTATION

DIVISION OF HIGHWAYS

**PROPOSED
HIGHWAY PLANS**

FAP ROUTE 788 (RELOCATED IL RTE 3)
SECTION 520-1-2-1
PROJECT
ST. CLAIR COUNTY
C-98-066-12

**PROPOSED RELOCATED IL ROUTE 3 –
RIVER PARK DRIVE TO 2500' NORTH OF
RIVER PARK DRIVE, RELOCATED MISSOURI AVENUE
AND RIVER PARK DRIVE CONNECTOR**

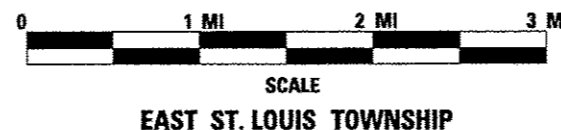
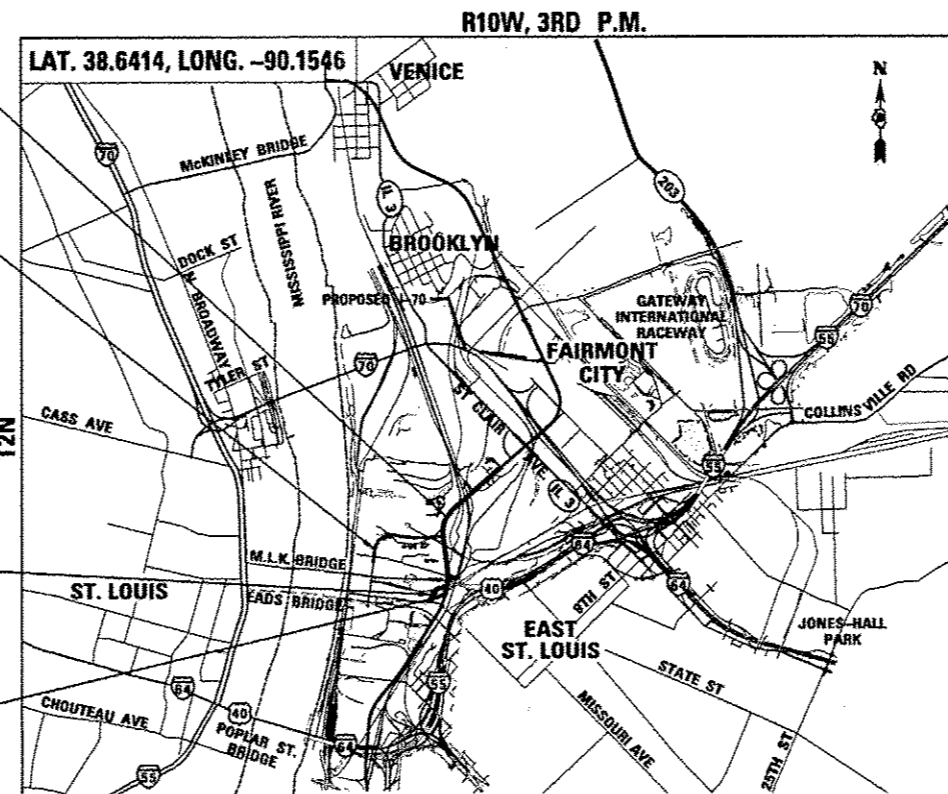
END IMPROVEMENT
RELOCATED IL ROUTE 3
STA 641 + 71.06

RELOCATED
MISSOURI AVENUE
STA 4 + 95.49 TO
STA 30 + 00.00

OMMISSION
STA 622 + 45.66 TO
STA 624 + 07.32
FOR CONTRACT 76F69

RIVER PARK DRIVE
CONNECTOR
STA. 7 + 41.77 TO
STA. 15 + 00.00

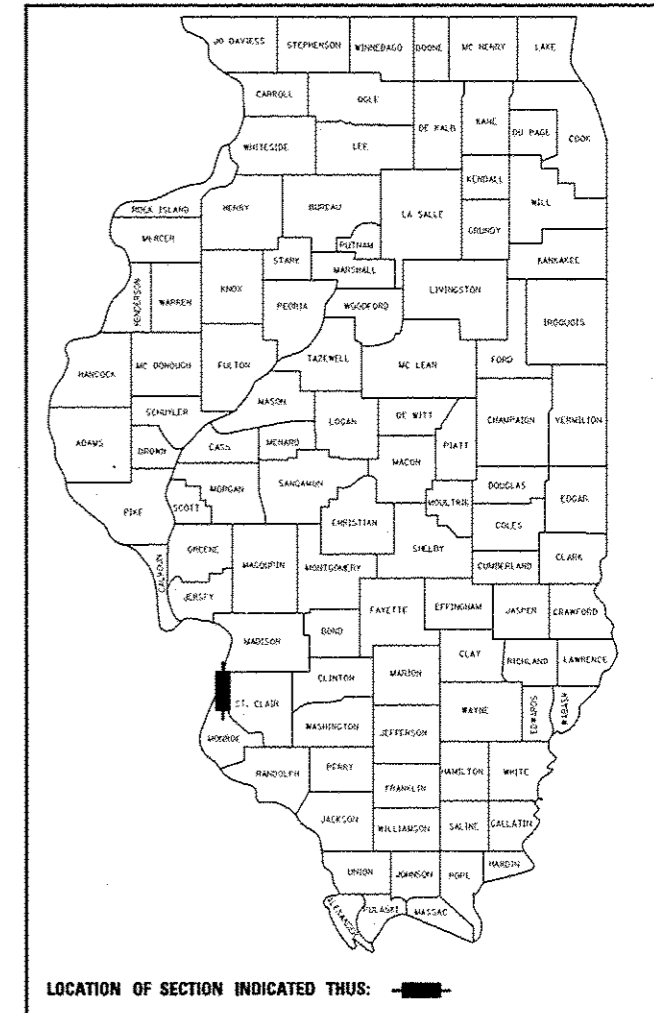
BEGIN IMPROVEMENT
RELOCATED IL ROUTE 3
STA 618 + 09.73



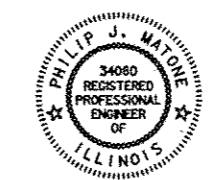
GROSS LENGTH OF PROJECT: 5,624.87' (1.065 MI)
NET LENGTH OF PROJECT: 5,463.21' (1.035 MI)
RIVER PARK DRIVE CONNECTOR: 758.23' (0.144 MI)
RELOCATED MISSOURI AVENUE: 2,504.51' (0.474 MI)
RELOCATED IL ROUTE 3 GROSS: 2,381.33' (0.447 MI)
RELOCATED IL ROUTE 3 NET: 2,199.87' (0.417 MI)

F.A.P. RTE.	SECTION	COUNTY	TOTAL SHEETS	SHEET NO.
788	520-1-2-1	ST. CLAIR	121	1
FED. ROAD DIST. NO.	ILLINOIS	CONTRACT NO.	76F70	

121 + 6 = 127
D-98-058-09



FINAL SUBMITTAL



SIGNATURE: Philip Matone
EXPIRES: 11/30/2013
DATE: 2/6/13

STATE OF ILLINOIS
DEPARTMENT OF TRANSPORTATION
DIVISION OF HIGHWAYS
SUBMITTED February 8 2013
PHILIP J. MATONE
REGISTERED PROFESSIONAL ENGINEER OF ILLINOIS
DEPT. DIRECTOR OF HIGHWAYS, REGION ENGINEER
May 10 2013
John D. Baranelli, P.E.
ENGINEER OF DESIGN AND ENVIRONMENT
May 10 2013
Omer Osman, P.E.
DIRECTOR OF HIGHWAYS, CHIEF ENGINEER

**PRINTED BY THE AUTHORITY
OF THE STATE OF ILLINOIS**

CODE NO.	ITEM	UNIT	TOTAL QUANTITY	CONSTR. CODE	
				ROADWAY 0001 URBAN	100% STATE
20200100	EARTH EXCAVATION	CU YD	238,899	238,899	
20201200	REMOVAL AND DISPOSAL OF UNSUITABLE MATERIAL	CU YD	18,846	18,846	
20400800	FURNISHED EXCAVATION	CU YD	54,085	54,085	
20800150	TRENCH BACKFILL	CU YD	1,537	1,537	
21000310	GRANULAR EMBANKMENT, SPECIAL	CU YD	17,179	17,179	
21301060	EXPLORATION TRENCH 60" DEPTH	FOOT	1000	1000	
* 25000210	SEEDING, CLASS 2A	ACRE	0.6	0.6	
* 25000305	SEEDING, CLASS 3A	ACRE	14.8	14.8	
* 25000310	SEEDING, CLASS 4	ACRE	0.1	0.1	
* 25000312	SEEDING, CLASS 4A	ACRE	6.9	6.9	
* 25000400	NITROGEN FERTILIZER NUTRIENT	POUND	2,024	2,024	
* 25000500	PHOSPHORUS FERTILIZER NUTRIENT	POUND	2,024	2,024	
* 25000600	POTASSIUM FERTILIZER NUTRIENT	POUND	2,024	2,024	
* 25000700	AGRICULTURAL GROUND LIMESTONE	TON	44	44	
* 25100115	MULCH, METHOD 2	ACRE	7.6	7.6	

CODE NO.	ITEM	UNIT	TOTAL QUANTITY	CONSTR. CODE	
				ROADWAY 0001 URBAN	100% STATE
* 25100630	EROSION CONTROL BLANKET	SO YD	71,820	71,820	
* 25100635	HEAVY DUTY EROSION CONTROL BLANKET	SO YD	2,194	2,194	
28000250	TEMPORARY EROSION CONTROL SEEDING	POUND	9,520	9,520	
28000305	TEMPORARY DITCH CHECKS	FOOT	576	576	
28000400	PERIMETER EROSION BARRIER	FOOT	2,047	2,047	
28000500	INLET AND PIPE PROTECTION	EACH	39	39	
28100705	STONE DUMPED RIPRAP, CLASS A3	SO YD	91	91	
28100707	STONE DUMPED RIPRAP, CLASS A4	SO YD	453	453	
28100709	STONE DUMPED RIPRAP, CLASS A5	SO YD	2405	2405	
28100725	STONE DUMPED RIPRAP, CLASS B5	SO YD	528	528	
28200200	FILTER FABRIC	SO YD	2858	2858	
31001500	LIME	TON	10,547	10,547	
35101600	AGGREGATE BASE COURSE, TYPE B 4"	SO YD	75	75	
31101900	SUBBASE GRANULAR MATERIAL, TYPE C	TON	4,168	4,168	
40200800	AGGREGATE SURFACE COURSE, TYPE B	TON	1,920	1,920	
40201000	AGGREGATE FOR TEMPORARY ACCESS	TON	875	875	
40600100	BITUMINOUS MATERIALS (PRIME COAT)	GALLON	30	30	
40603087	HOT-MIX ASPHALT BINDER COURSE, IL-19.0 FG, N70	TON	20	20	

▲ REVISED 6-5-13 *SPECIALTY ITEM

CODE NO.	ITEM	UNIT	TOTAL QUANTITY	CONSTR. CODE	
				100% STATE	
				ROADWAY 0001	URBAN
40603340	HOT-MIX ASPHALT SURFACE COURSE, MIX "D", N70	TON	10	10	
44000100	PAVEMENT REMOVAL	SQ YD	1400	1400	
50800105	REINFORCEMENT BARS	POUND	220	220	
542A0217	PIPE CULVERTS, CLASS A, TYPE 1 12"	FOOT	187	187	
542A0220	PIPE CULVERTS, CLASS A, TYPE 1 15"	FOOT	18	18	
542A0235	PIPE CULVERTS, CLASS A, TYPE 1 30"	FOOT	212	212	
542D0220	PIPE CULVERTS, CLASS D, TYPE 1 15"	FOOT	25	25	
542D1060	PIPE CULVERTS, CLASS D, TYPE 2 15"	FOOT	44	44	
5421D015	PIPE CULVERTS, CLASS D, TYPE 1 15" (TEMPORARY)	FOOT	56	56	
54213450	END SECTIONS 15"	EACH	4	4	
54213657	PRECAST REINFORCED CONCRETE FLARED END SECTIONS 12"	EACH	6	6	
54213660	PRECAST REINFORCED CONCRETE FLARED END SECTIONS 15"	EACH	3	3	
54213669	PRECAST REINFORCED CONCRETE FLARED END SECTIONS 24"	EACH	3	3	
54213675	PRECAST REINFORCED CONCRETE FLARED END SECTIONS 30"	EACH	6	6	

CODE NO.	ITEM	UNIT	TOTAL QUANTITY	CONSTR. CODE	
				100% STATE	
				ROADWAY 0001	URBAN
54213681	PRECAST REINFORCED CONCRETE FLARED END SECTIONS 36"	EACH	1	1	
54213687	PRECAST REINFORCED CONCRETE FLARED END SECTIONS 42"	EACH	1	1	
54213693	PRECAST REINFORCED CONCRETE FLARED END SECTIONS 48"	EACH	1	1	
550A0120	STORM SEWERS, CLASS A, TYPE 1 24"	FOOT	74	74	
550A0340	STORM SEWERS, CLASS A, TYPE 2 12"	FOOT	733	733	
550A0360	STORM SEWERS, CLASS A, TYPE 2 15"	FOOT	134	134	
550A0410	STORM SEWERS, CLASS A, TYPE 2 24"	FOOT	93	93	
550A0450	STORM SEWERS, CLASS A, TYPE 2 36"	FOOT	90	90	
550A0640	STORM SEWERS, CLASS A, TYPE 3 12"	FOOT	44	44	
550A0710	STORM SEWERS, CLASS A, TYPE 3 24"	FOOT	283	283	
550A0750	STORM SEWERS, CLASS A, TYPE 3 36"	FOOT	256	256	
550A0780	STORM SEWERS, CLASS A, TYPE 3 48"	FOOT	32	32	
550A1070	STORM SEWERS, CLASS A, TYPE 4 42"	FOOT	257	257	
60100080	FRENCH DRAINS	CU YD	39	39	
60100060	CONCRETE HEADWALLS FOR PIPE DRAINS	EACH	17	17	
60100085	GEOTECHNICAL FABRIC FOR FRENCH DRAINS	SO YD	347	347	
60107100	PIPE UNDERDRAINS 6"	FT	645	645	
60240366	INLETS, TYPE B, WITH MEDIAN INLET (604106)	EACH	3	3	
60108200	PIPE UNDERDRAINS 6" (SPECIAL)	FOOT	15	15	

▲ REVISED 6-5-13

11

▲

Farnsworth GROUP, INC.
2706 McClaw Drive
Glenwood, Illinois 61704
309/963-8433 309/963-1571 fax

DESIGNED: JJO
DRAWN: JJO
CHECKED: PJM
DATE: 10/10/12

REVISED: _____
REVISED: _____
REVISED: _____
REVISED: _____

STATE OF ILLINOIS
DEPARTMENT OF TRANSPORTATION

SUMMARY OF QUANTITIES

SCALE: SHEET NO. OF SHEETS STA. TO STA.

F.A.P. RTE. 788	SECTION 520-1-2-1	COUNTY ST. CLAIR	TOTAL SHEETS 121	SHEET NO. 4
CONTRACT NO. 76F70				

ILLINOIS FED. AID PROJECT

CODE NO.	ITEM	UNIT	TOTAL QUANTITY	CONSTR. CODE	
				ROADWAY 0001 URBAN	100% STATE
61100605	MISCELLANEOUS CONCRETE	CU YD	16.5	16.5	
66500105	WOVEN WIRE FENCE, 4'	FOOT	173	173	
66600105	FURNISHING AND ERECTING RIGHT OF WAY MARKERS	EACH	30	30	
66900200	NON-SPECIAL WASTE DISPOSAL	CU YD	27,475	27,475	⚠
66900400	SPECIAL WASTE GROUNDWATER DISPOSAL	GALLON	0	0	
66900450	SPECIAL WASTE PLANS AND REPORTS	L SUM	1	1	
66900530	SOIL DISPOSAL ANALYSIS	EACH	2	2	
67000400	ENGINEER'S FIELD OFFICE, TYPE A	CAL MO	16	16	
67100100	MOBILIZATION	L SUM	1	1	
67201100	SEALING ABANDONED MONITORING WELLS	EACH	3	3	
70102620	TRAFFIC CONTROL AND PROTECTION, STANDARD 701501	L SUM	1	1	
Z0013300	CONCRETE REMOVAL (SPECIAL)	SO YD	1,479	1,479	
Z0013796	SEDIMENT CONTROL, STABILIZED CONSTRUCTION ENTRANCE	SO YD	500	500	
Z0056100	SAND DRAINAGE BLANKET	CUYD	13890	13890	⚠
Z0013798	CONSTRUCTION LAYOUT	L SUM	1	1	
Z0065200	SHOT ROCK	TON	3,159	3,159	
Z0076600	TRAINEES	HOUR	0	0	
+ Z0076602	TRAINEES (SPECIAL)	HOUR	2,000	2,000	

CODE NO.	ITEM	UNIT	TOTAL QUANTITY	CONSTR. CODE	
				ROADWAY 0001 URBAN	100% STATE
Z0076604	TRAINEES TRAINING PROGRAM GRADUATE	HOUR	2,000	2,000	
X0324045	SEDIMENT CONTROL, STABILIZED CONSTRUCTION ENTRANCE REMOVAL	EACH	2	2	
* X0325391	EXPANDED POLYSTYRENE FILL	CUYD	5,740	5,740	⚠
X0324775	SEDIMENT CONTROL, STABILIZED CONSTRUCTION ENTRANCE MAINTENANCE	SO YD	500	500	
X0325833	WICK DRAINS	FOOT	313,758	313,758	⚠
X2010507	CLEARING, SPECIAL	ACRE	32.2	32.2	
X2020410	EARTH EXCAVATION (SPECIAL)	CU YD	100	100	
X4402400	CURB REMOVAL (SPECIAL)	FOOT	78	78	
X5012502	CONCRETE REMOVAL (SPECIAL)	CU YD	465	465	
X6020084	MANHOLE, SPECIAL	EACH	12	12	
X6024240	INLETS, SPECIAL	EACH	17	17	
X7010216	TRAFFIC CONTROL AND PROTECTION, (SPECIAL)	L SUM	1	1	

+ 0042

⚠ REVISED 6-5-13



DESIGNED - JUO
DRAWN - JUO
CHECKED - PJM
DATE - 10/18/12

REVISIONS
REVISIONS
REVISIONS
REVISIONS

STATE OF ILLINOIS
DEPARTMENT OF TRANSPORTATION

SUMMARY OF QUANTITIES

SCALE: SHEET NO. OF SHEETS STA. TO STA.

F.A.P. RITE 788	SECTION 520-1-2-1	COUNTY ST. CLAIR	TOTAL SHEETS 121	SHEET NO. 5
ILLINOIS FED. AID PROJECT			CONTRACT NO. 76F70	

LOCATION	SEEDING TABLE								
	SEEDING CLASS 2A ACRE	SEEDING CLASS 3A ACRE	SEEDING CLASS 4 ACRE	SEEDING CLASS 4A ACRE	MULCH METHOD 2 ACRE	NITROGEN FERTILIZER NUTRIENT LB	PHOSPHORUS FERTILIZER NUTRIENT LB	POTASSIUM FERTILIZER NUTRIENT LB	TEMPORARY EROSION CONTROL SEEDING LB
IL RTE 3									
STA 619+00 TO STA 622+00, LT/RT									258
STA 619+00 TO STA 640+00, LT/RT		7.58				682	682	682	2,274
STA 624+10 TO STA 640+20, LT/RT									1,386
STA 624+54 TO STA 639+85, LT/RT	0.6				0.6	54	54	54	180
RIVERPARK DRIVE									
STA 7+72 TO STA 14+20, LT/RT		0.74		1.06	1.06	162	162	162	540
STA 7+85 TO STA 14+20, LT/RT									460
MISSOURI AVENUE									
STA 5+00 TO STA 29+30, LT/RT									672
STA 5+20 TO STA 29+30, LT/RT		6.52				587	587	587	1,956
STA 21+95 TO 22+75 LT			0.1		0.1	9	9	9	30
GADDY BASIN STA 626+00 TO STA 631+00, RT				1.63	1.63	147	147	147	489
MISSOURI AVE BASIN STA 11+00 TO STA 29+00, RT				4.25	4.25	383	383	383	1,275
TOTAL	0.6	14.8	0.1	6.9	7.6	2,024	2,024	2,024	9,520

NOTE: QUANTITIES ROUNDED UP

LOCATION	EARTHWORK									
	EARTH EXCAVATION CU YD	ESTIMATED VOLUME OF UNSUITABLE MATERIAL CU YD	VOLUME OF UNSUITABLE MATERIAL ADJUSTED FOR SHRINKAGE (15%) CU YD	REMAINING SUITABLE EXCAVATION ADJUSTED FOR SHRINKAGE (25%) CU YD	VOLUME AVAILABLE TO PLACE UNSUITABLE FILL MATERIAL CU YD	GRANULAR EMBANKMENT, SPECIAL CU YD	SAND DRAINAGE BLANKET CU YD	EMBANKMENT ADJUSTED BY GRANULAR EMBANKMENT, SPECIAL AND SAND DRAINAGE BLANKET CU YD	BALANCE WASTE (+) SHORTAGE (-) CU YD	NON-SPECIAL WASTE DISPOSAL WASTE (+) AVAILABLE (-) CU YD
IL RTE 3 STA 618+09.73 TO STA 641+71.06	34,147	17,074 (50%)	14,513	12,806	-	10,599	13,890	84,269	-71,463	+14,513
MISSOURI AVE STA 4+95.49 TO STA 30+00.00	9,198	4,599 (50%)	3,909	3,449	-	4,630		39,849	-36,400	+3,909
RIVER PARK DRIVE STA 7+41.77 TO STA 15+00.00	56	28 (50%)	24	21	-	1,950		10,841	-10,820	+24
D-2 BASIN	14,300	7,150 (50%)	6,078	5,363	8,611			8,441	-3,078	-2,533
GADDY BASIN	44,252	22,126 (50%)	18,807	16,595	5,402			13	+16,582	+13,405
D-8 BASIN	125,433	62,717 (50%)	53,309	47,038	17,712			211	+46,827	+35,597
CRIS-CROSS	11,513	5,757 (50%)	4,893	4,318	23,146			51	+4,267	-18,253
TOTAL	238,899	119,451	101,533	89,590	54,871	17,179	13,890	143,675	-54,085	+46,662

* ADJUST NON-SPECIAL WASTE VOLUME FOR 15% SWELL FACTOR AFTER PLACING 22,771 CU YD ON CONTRACT 76848, VOLUME = 27,475 CU YD.

EXPANDED POLYSTYRENE FILL	
STATION TO STATION	CU YD
RELOCATED ILLINOIS ROUTE 3	
624+51 - 625+87	4,923
RAILROAD ACCESS ROAD	
50+52 - 51+37	817
TOTAL	5,740

INLET AND PIPE PROTECTION	
STATION	EACH
RELOCATED ILLINOIS ROUTE 3	
620+45, LT	1
620+90, LT	1
621+40, RT	1
624+75, RT	1
630+53, LT	1
632+94, LT	1
637+32, RT	1
638+15, LT	1
RIVER PARK DRIVE CONNECTOR	
8+00, RT	1
8+05, LT	1
8+37, LT	1
8+70, LT	1
9+00, LT & RT & RT	3
10+30, LT & RT	2
10+77, LT & RT & RT	3
10+92, LT & RT	2
12+00, LT & RT & RT	3
12+92, RT	2
13+72, RT & RT	2
13+90, LT	1
RELOCATED MISSOURI AVENUE	
10+50, RT	1
11+00, LT & LT	2
14+31, RT	1
22+00, LT & LT	2
23+33, RT	1
TEMPORARY RAILROAD ACCESS ROAD	
21+00, LT	1
25+35, RT	1
TOTAL	39

PERIMETER EROSION BARRIER	
STATION TO STATION	FOOT
RELOCATED ILLINOIS ROUTE 3	
622+30, RT - 622+60, LT	173
623+90, RT - 624+25, LT	168
638+60, LT - 641+85, RT	450
RIVER PARK DRIVE CONNECTOR	
7+50, LT - 14+00, LT	706
RELOCATED MISSOURI AVENUE	
24+80, LT - 28+90, LT	470
TEMPORARY RAILROAD ACCESS ROAD	
20+25, RT - 21+25, RT	80
TOTAL	2,047

STONE DUMPED RIPRAP, CLASS A3	
STATION	SO YD
RIVER PARK DRIVE CONNECTOR	
9+41, RT	17
10+77, RT	15
12+00, RT	10
12+86, RT	15
RELOCATED MISSOURI AVENUE	
10+50, RT	17
TEMPORARY RAILROAD ACCESS ROAD	
21+00, RT	17
TOTAL	91

STONE DUMPED RIPRAP, CLASS A4	
STATION	SO YD
RELOCATED ILLINOIS ROUTE 3	
624+75, RT	76
630+53, LT	30
635+19, LT	65
RELOCATED MISSOURI AVENUE	
11+00, LT	58
11+00, RT	182
22+00, RT	42
TOTAL	453

STONE DUMPED RIPRAP, CLASS A5	
STATION TO STATION	SO YD
RELOCATED ILLINOIS ROUTE 3	
633+35, LT	946.1
RELOCATED MISSOURI AVENUE	
23+07.91, RT	714.0
15+17.71, RT	744.4
TOTAL	2,405

STONE DUMPED RIPRAP, CLASS B3	
STATION TO STATION	SO YD
RELOCATED ILLINOIS ROUTE 3	
625+46, RT - 628+32, RT	528
TOTAL	528

TEMPORARY DITCH CHECKS	
STATION	FOOT
RELOCATED ILLINOIS ROUTE 3	
622+40, RT	18
623+50, LT	18
625+35, CL	18
625+50, LT	18
626+00, CL	18
627+00, CL	18
627+60, LT	18
628+50, CL	18
629+60, LT	18
631+15, LT	18
631+30, RT	18
632+50, CL	18
633+30, RT	18
634+00, CL	18
635+00, CL	18
635+30, RT	18
636+00, CL	18
638+85, RT	18
640+50, RT	18
RELOCATED MISSOURI AVENUE	
7+30, LT	18
7+30, RT	18
9+00, LT	18
9+00, RT	18
13+00, LT	18
16+00, LT	18
18+00, LT	18
20+00, LT	18
TEMPORARY RAILROAD ACCESS ROAD	
21+50, LT	18
21+50, RT	18
22+50, LT	18
22+50, RT	18
25+00, LT	18
TOTAL	576

FILTER FABRIC	
STATION	SO YD
RELOCATED ILLINOIS ROUTE 3	
624+75, RT	76
630+53, LT	30
633+35, LT	946.1
635+19, LT	65
RELOCATED MISSOURI AVENUE	
11+00, LT	58
11+00, RT	182
22+00, RT	42
23+07.91, RT	714
15+17.71, RT	744.4
TOTAL	2,858



USER NAME: #USER#
DESIGNED: JJO
DRAWN: JJO
CHECKED: PJM
DATE: 10/18/12

REVISIONS:
02/06/13
03/18/13
05/13/13
6-5-13

STATE OF ILLINOIS
DEPARTMENT OF TRANSPORTATION

SCHEDULE OF QUANTITIES

SCALE: SHEET NO. OF SHEETS STA. TO STA.

F.A.P. RTE. 788 SECTION 520-1-2-1 COUNTY ST. CLAIR TOTAL SHEETS 121 SHEET NO. 10 CONTRACT NO. 76770 ILLINOIS FED. AID PROJECT

AGGREGATE BASE COURSE, TYPE B, 4"	
STATION TO STATION	SO YD
TEMPORARY RAILROAD ACCESS ROAD	
20+21.00 - 20+41.00, LT & RT	75
TOTAL	75

AGGREGATE SURFACE COURSE, TYPE B	
STATION TO STATION	TON
RELOCATED ILLINOIS ROUTE 3	
625+00, LT & RT, STAGE I	187
625+00, LT & RT	426
625+00, LT & RT, RELOCATED MISSOURI AVENUE & RAILROAD ACCESS ROAD	292
RAILROAD ACCESS ROAD	
50+46 - 52+55	365
TEMPORARY RAILROAD ACCESS ROAD	
20+21.00 - 25+72.51, LT & RT	650
TOTAL	1,920

BITUMINOUS MATERIALS (PRIME COAT)	
STATION TO STATION	GAL
TEMPORARY RAILROAD ACCESS ROAD	
20+21.00 - 25+41.00, LT & RT	30
TOTAL	30

HOT-MIX ASPHALT BINDER COURSE, IL-19.0 FC, N70	
STATION TO STATION	TON
TEMPORARY RAILROAD ACCESS ROAD	
20+21.00 - 25+41.00 LT & RT	20
TOTAL	20

HOT-MIX ASPHALT SURFACE COURSE, MIX "D", N70	
STATION TO STATION	TON
TEMPORARY RAILROAD ACCESS ROAD	
20+21.00 - 25+41.00, LT & RT	10
TOTAL	10

PAVEMENT REMOVAL	
STATION	SO YD
RELOCATED ILLINOIS ROUTE 3	
620+55, LT & RT	1,400
TOTAL	1,400

AGGREGATE FOR TEMPORARY ACCESS	
STATION	TON
RELOCATED ILLINOIS ROUTE 3	
625+00, LT & RT	131
MISSOURI AVENUE RUNAROUND	
202+00 - 208+37	744
TOTAL	875

CURB REMOVAL (SPECIAL)	
STATION	FOOT
TEMPORARY RAILROAD ACCESS ROAD	
20+21, LT & RT	78
TOTAL	78

CONCRETE REMOVAL (SPECIAL)	
STATION	CU YD
RELOCATED ILLINOIS ROUTE 3	
635+35, LT	12
RELOCATED MISSOURI AVENUE	
5+10, LT	35
5+10, RT	27
5+35, RT	35
5+50, LT	74
7+00, LT & RT	68
7+30, LT & RT	57
12+18, LT & RT	71
23+40, LT	86
TOTAL	465

EROSION CONTROL BLANKET	
STATION TO STATION	SO YD
RELOCATED ILLINOIS ROUTE 3	
619+00 - 640+00	36,688
RELOCATED MISSOURI AVENUE	
5+20 - 29+30	31,567
RIVER PARK DRIVE CONNECTOR	
7+72 - 14+20	3,565
TOTAL	71,820

HEAVY DUTY EROSION CONTROL BLANKET	
STATION TO STATION	SO YD
RELOCATED ILLINOIS ROUTE 3	
628+50, LT - 631+50, LT	1,757
638+50, LT	437
TOTAL	2,194

WOVEN WIRE FENCE 4'	
STATION TO STATION	FOOT
RELOCATED ILLINOIS ROUTE 3	
632+95.78, LT	57.5
RELOCATED MISSOURI AVENUE	
14+38.81, RT	57.5
23+33.14, RT	57.5
TOTAL	173

FRENCH DRAINS	
STATION TO STATION	CU YD
RELOCATED MISSOURI AVENUE	
16+01.94 - 16+99.23, RT	13.0
21+37.59 - 22+27.47, RT	12.2
27+66.00 - 28+47.21, RT	13.3
TOTAL	39

GEOTECHNICAL FABRIC FOR FRENCH DRAINS	
STATION TO STATION	SO YD
RELOCATED MISSOURI AVENUE	
16+01.94 - 16+99.23, RT	117.8
21+37.59 - 22+27.47, RT	109.8
27+66.00 - 28+47.21, RT	119.8
TOTAL	347

SHOT ROCK	
STATION TO STATION	TON
RELOCATED ILLINOIS ROUTE 3	
636+60, LT/RT - 638+70, LT/RT	3,159
TOTAL	3,159

REMOVAL AND DISPOSAL OF UNSUITABLE MATERIAL	
STATION TO STATION	CU YD
RELOCATED ILLINOIS ROUTE 3	
635+00, RT	232
636+60, LT/RT - 638+70, LT/RT	1,504
RELOCATED MISSOURI AVENUE	
8+00, CL	370
11+00, CL	370
14+00, CL	259
GADDY BASIN	16,111
TOTAL	18,846

LIME	
STATION TO STATION	TON
RELOCATED ILLINOIS ROUTE 3	
618+09.73 - 641+71.06	1,423
RELOCATED MISSOURI AVENUE	
4+95.49 - 30+00	410
RIVER PARK CONNECTOR	
7+41.77 - 15+00	5
MATERIAL FROM DETENTION BASINS	8,709
TOTAL	10,547

SUBBASE GRANULAR MATERIAL, TYPE C	
STATION TO STATION	TON
RELOCATED ILLINOIS ROUTE 3	
624+51 - 625+87, LT & LT	3,514
RAILROAD ACCESS ROAD	
50+52 - 51+37, LT & RT	654
TOTAL	4,168

GRANULAR EMBANKMENT, SPECIAL	
STATION TO STATION	CU YD
RELOCATED ILLINOIS ROUTE 3	
618+09.73 - 622+45.66	2,734
624+07.32 - 627+65.00	206
627+40.27 - 634+00.00	2,999
634+00.00 - 641+71.06	4,660
RELOCATED MISSOURI AVENUE	
7+00.00 - 9+50.00	235
15+50.00 - 29+50.00	4,395
RIVER PARK DRIVE CONNECTOR	
8+00.00 - 14+00.00	1,950
TOTAL	17,179

SAND DRAINAGE BLANKET	
STATION TO STATION	CU YD
RELOCATED ILLINOIS ROUTE 3	
618+25 - 622+56	5,625
623+89 - 624+70	575
636+00 - 641+00	7,690
TOTAL	13,890

WICK DRAINS	
STATION TO STATION	FOOT
RELOCATED ILLINOIS ROUTE 3	
618+25 - 622+56	139,264
623+89 - 625+50	11,934
636+00 - 641+00	162,560
TOTAL	313,758

PIPE UNDERDRAINS 6"	
STATION TO STATION	FOOT
RELOCATED ILLINOIS ROUTE 3	
618+50, LT	20
619+50, LT	20
620+50, LT	20
621+00, RT	20
622+00, LT	20
624+00, RT	20
624+55, LT - 625+90, RT	325
636+90, RT	20
637+36, RT	20
637+55, RT	20
638+00, LT	20
639+00, LT & RT	40
640+00, RT	20
641+00, RT	20
RELOCATED MISSOURI AVENUE	
27+00, LT	20
28+00, RT	20
TOTAL	645

PIPE UNDERDRAINS 6" (SPECIAL)	
STATION	FOOT
RELOCATED ILLINOIS ROUTE 3	
625+50, RT	15
TOTAL	15

CONCRETE HEADWALLS FOR PIPE DRAINS	
STATION	EACH
RELOCATED ILLINOIS ROUTE 3	
618+50, LT	1
619+50, LT	1
620+50, LT	1
621+00, RT	1
622+00, LT	1
624+00, RT	1
625+50, RT	1
636+90, RT	1
637+36, RT	1
637+55, RT	1
638+00, LT	1
639+00, LT & RT	2
640+00, RT	1
641+00, RT	1
RELOCATED MISSOURI AVENUE	
27+00, LT	1
28+00, RT	1
TOTAL	17

MISCELLANEOUS CONCRETE	
STATION TO STATION	CU YD
RELOCATED ILLINOIS ROUTE 3	
633+35, LT	5.5
RELOCATED MISSOURI AVENUE	
15+17.71, RT	5.5
23+07.91, RT	5.5
TOTAL	16.5

REINFORCEMENT BARS	
STATION TO STATION	POUND
RELOCATED ILLINOIS ROUTE 3	
633+35, LT	73.0
RELOCATED MISSOURI AVENUE	
15+17.71, RT	73.0
23+07.91, RT	73.0
TOTAL	220

SEALING ABANDONED MONITORING WELLS	
STATION TO STATION	EACH
RELOCATED ILLINOIS ROUTE 3	
627+58.27, 144.06' RT	1
628+14.32, 286.82' RT	1
630+37.29, 158.62' RT	1
TOTAL	3



USER NAME: jdmayer
 DESIGNED - JJO
 DRAWN - JJO
 CHECKED - PJM
 DATE - 10/18/12

REVISOR - JJO
 REVISION - 02/06/13
 REVISOR - JJO
 REVISION - 03/18/13
 REVISOR - PJM
 REVISION - 05/13/13
 REVISOR - JJO
 REVISION - 6-5-13

DESIGNED - JJO
 REVISION - 02/06/13
 DRAWN - JJO
 REVISION - 03/18/13
 CHECKED - PJM
 REVISION - 05/13/13
 DATE - 10/18/12
 REVISION - 6-5-13

STATE OF ILLINOIS
 DEPARTMENT OF TRANSPORTATION

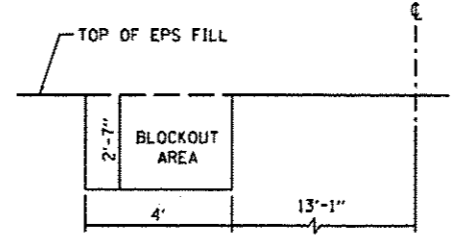
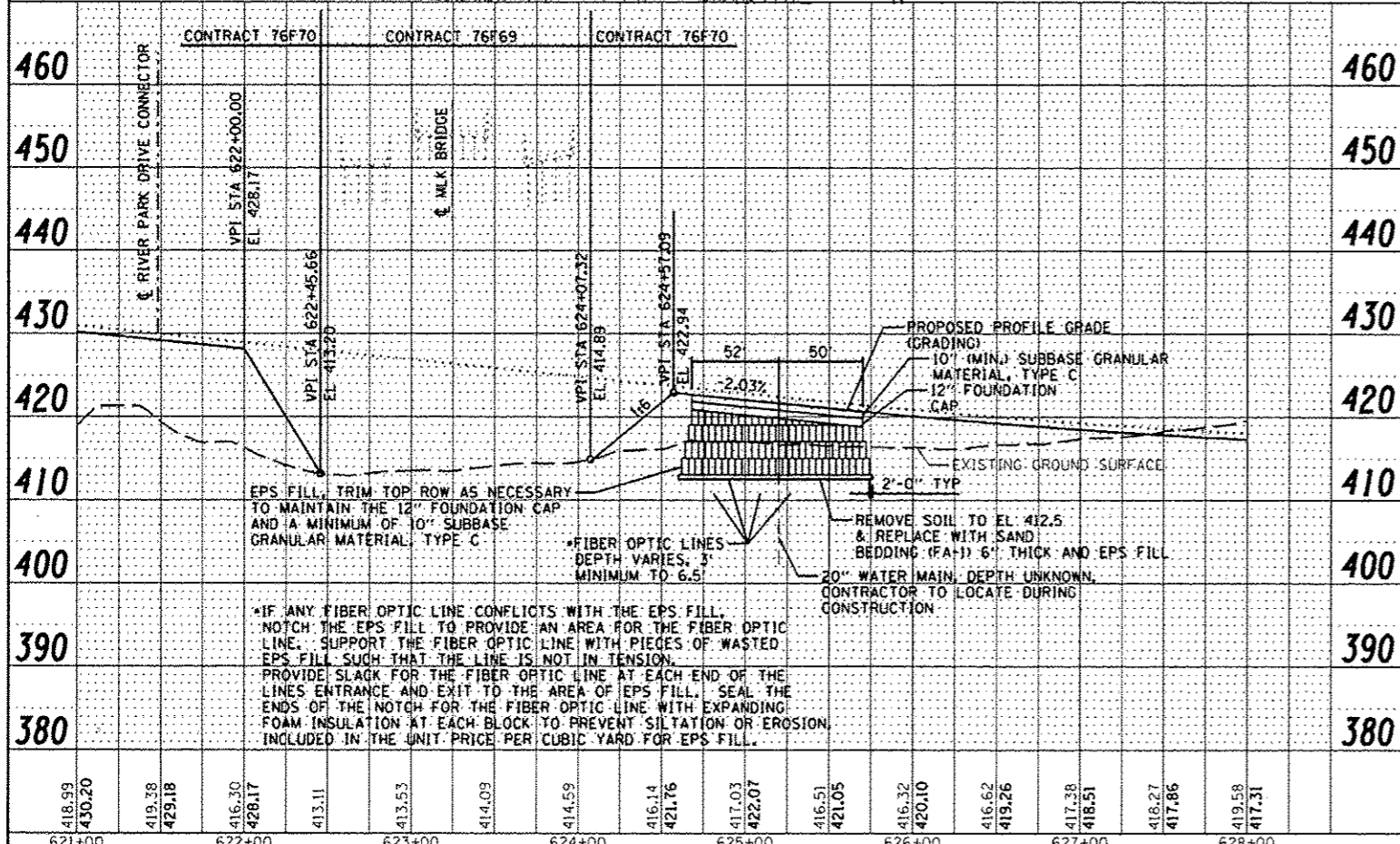
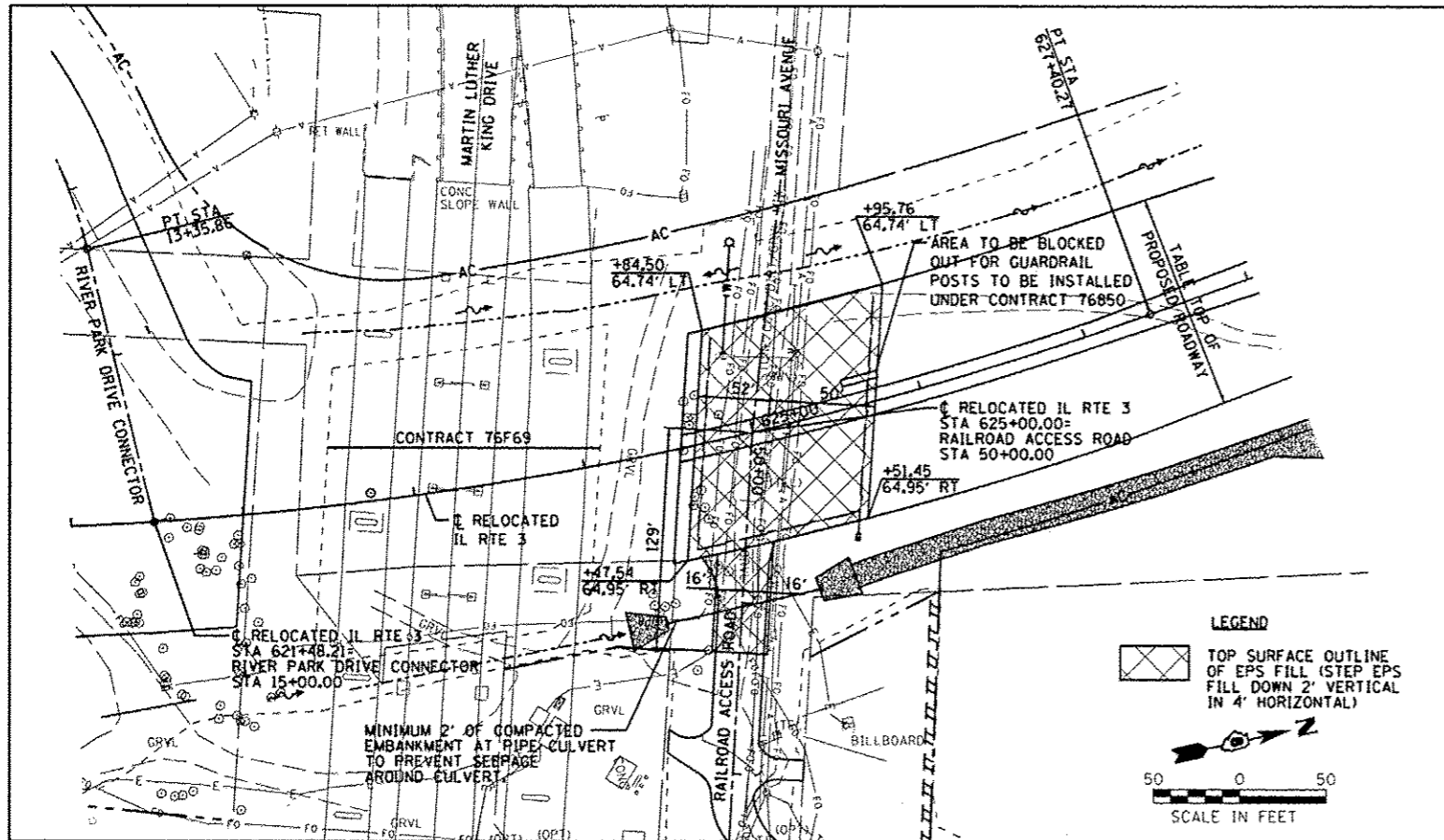
SCHEDULE OF QUANTITIES

SCALE: SHEET NO. OF SHEETS STA. TO STA.

F.A.P. RTE. 788 SECTION 520-1-2-1 COUNTY ST. CLAIR TOTAL SHEETS 121 SHEET NO. 11 CONTRACT NO. 76F70 ILLINOIS FED. AID PROJECT

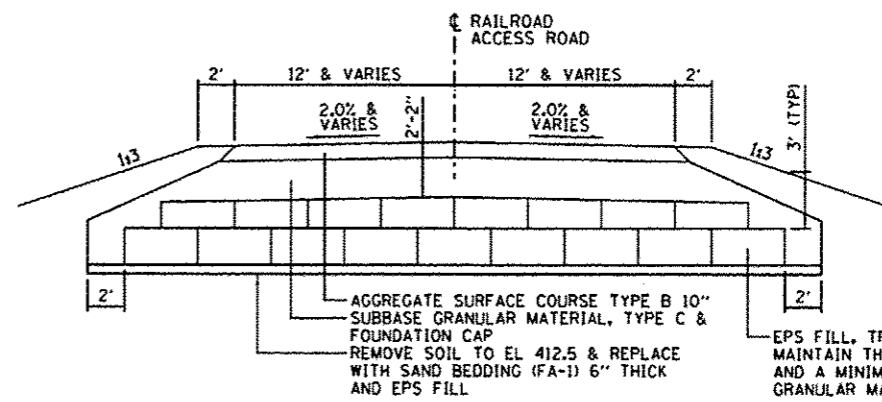
DATE	
BY	
REVISIONS	
NO.	DESCRIPTION
1	
2	
3	
4	
5	
6	
7	
8	
9	
10	

DATE	
BY	
REVISIONS	
NO.	DESCRIPTION
1	
2	
3	
4	
5	
6	
7	
8	
9	
10	



GUARDRAIL POST BLOCKOUT DETAIL
 STA 625+56.59 TO STA 625+77.91

- NOTES:**
- THERE ARE SEVERAL FIBER OPTICS LINES AND OTHER UTILITIES, INCLUDING ELECTRICAL, TELEPHONE, WATER, AND AERIAL LINES LOCATED IN THE LIMITS OF CONSTRUCTION. THE CONTRACTOR SHALL HAND LOCATE AND VERIFY FIBER OPTIC LINES & SENSITIVE UTILITIES AND EXPOSE THESE PRIOR TO EXCAVATING FOR THE PROJECT PARTICULARLY ALONG MISSOURI AVE. AND THE MLK BRIDGE AREA. THIS WORK SHALL BE PAID FOR UNDER ARTICLE 109.04. SEE SUBSURFACE UNDERGROUND ENGINEERING PLANS FOR ADDITIONAL INFORMATION.
 - EPS FILL SHALL BE A MINIMUM DENSITY OF 2.0 LBS PER CUBIC FOOT AND HAVE A MINIMUM COMPRESSIVE RESISTANCE AT 1/2 DEFORMATION OF 14.5 POUNDS PER SQUARE INCH. WRAP THE BOTTOM, SIDES AND TOP OF THE EPS FILL WITH A 10 MIL POLYETHYLENE WRAP. OVERLAP THE POLYWRAP AT THE ENDS BY 6" AND TAPE THE OVERLAP TOGETHER. THE POLYETHYLENE WRAP AND THE SAND (FA-1) BEDDING WILL NOT BE PAID FOR SEPARATELY, BUT SHALL BE INCLUDED IN THE CUBIC YARD PRICE FOR THE EXPANDED POLYSTYRENE FILL.
 - A FOUNDATION CAP OF 12" OF AGGREGATE CA-6 OR CA-10 SHALL BE PLACED ON THE EPS FILL BEFORE ANY EQUIPMENT IS ALLOWED TO OPERATE ON TOP OF THE EPS FILL. THE FOUNDATION CAP SHALL BE PAID FOR AT THE UNIT PRICE PER CUBIC YARD OF SUBBASE GRANULAR MATERIAL, TYPE C.
 - DUE TO BUOYANCY & FROST LEVEL CONCERNS, THE EPS FILL SHALL HAVE A MINIMUM OF 3 FEET OF MATERIAL PLACED ABOVE IT (INCLUDING PAVEMENT OR SUBBASE).



NOTE: EXPANDED POLYSTYRENE FILL = EPS FILL

418.99 430.20	419.38 429.18	416.30 428.17	413.11	413.53	414.03	414.59	416.14 421.76	417.03 422.07	416.51 421.05	416.32 420.10	416.62 419.26	417.28 418.51	418.27 417.86	419.58 417.31
621+00	622+00	623+00	624+00	625+00	626+00	627+00	628+00							

Farnsworth GROUP, INC.
 2100 McGraw Drive
 Bloomington, Illinois 61704
 309-663-8435, 309-663-1071 fax

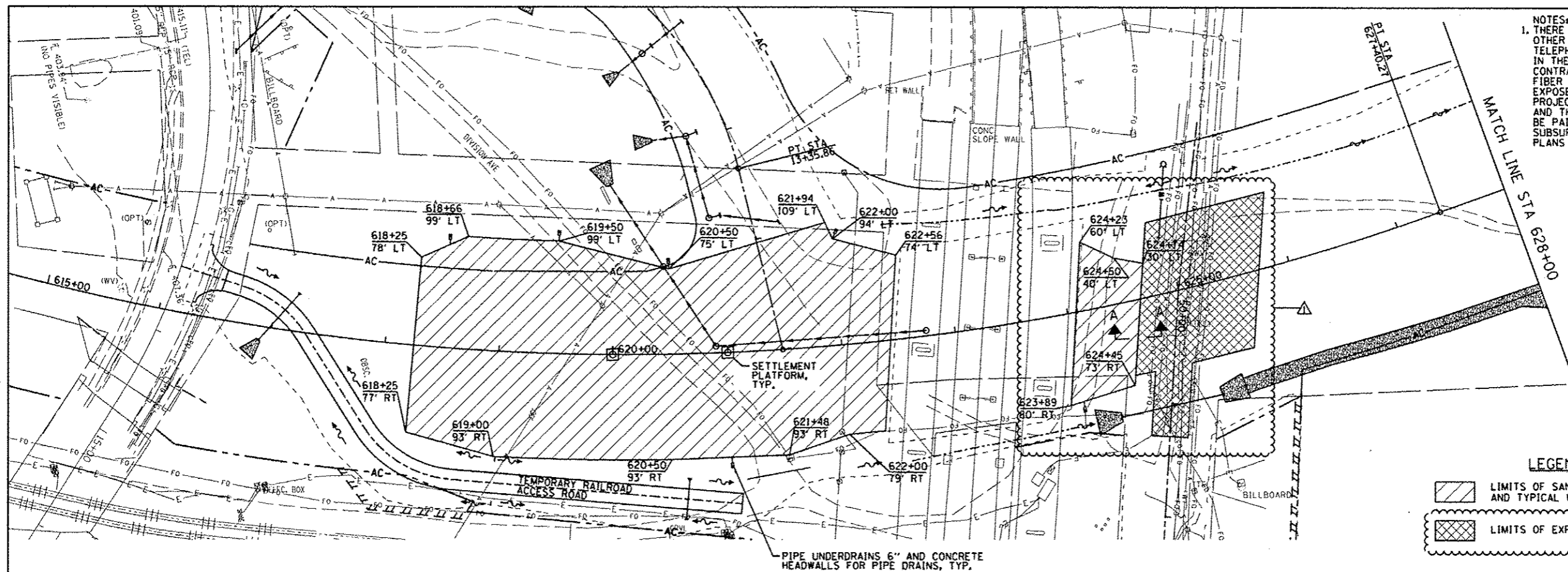
USER NAME: #USERS*
 DESIGNED - JJO
 DRAWN - JJO
 CHECKED - PJM
 DATE - 10/18/12

REVISED - 02/06/13
 REVISED - 03/18/13
 REVISED - 05/13/13
 REVISED - 6-5-13

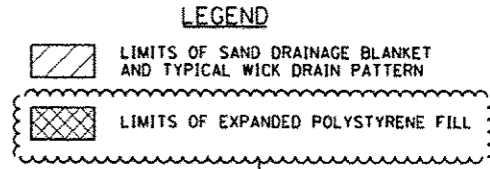
STATE OF ILLINOIS
 DEPARTMENT OF TRANSPORTATION

ENTIRE SHEET - 6-5-13

RELOCATED IL RTE 3		F.A.P. RTE.	SECTION	COUNTY	TOTAL SHEETS	SHEET NO.
EXPANDED POLYSTYRENE FILL PLAN & DETAILS		788	620-1-2-1	ST. CLAIR	121	22A
SCALE:	SHEET NO. OF SHEETS	STA.	TO STA.	ILLINOIS FED. AID PROJECT		
				CONTRACT NO. 76F70		



NOTES:
 1. THERE ARE SEVERAL FIBER OPTICS LINES AND OTHER UTILITIES, INCLUDING ELECTRICAL, TELEPHONE, WATER, AND AERIAL LINES LOCATED IN THE LIMITS OF CONSTRUCTION. THE CONTRACTOR SHALL HAND LOCATE AND VERIFY FIBER OPTIC LINES & SENSITIVE UTILITIES AND EXPOSE THESE PRIOR TO EXCAVATING FOR THE PROJECT PARTICULARLY ALONG MISSOURI AVE. AND THE MLK BRIDGE AREA. THIS WORK SHALL BE PAID FOR UNDER ARTICLE 109.04. SEE SUBSURFACE UNDERGROUND ENGINEERING PLANS FOR ADDITIONAL INFORMATION.



PIPE UNDERDRAINS 6" AND CONCRETE HEADWALLS FOR PIPE DRAINS, TYP.

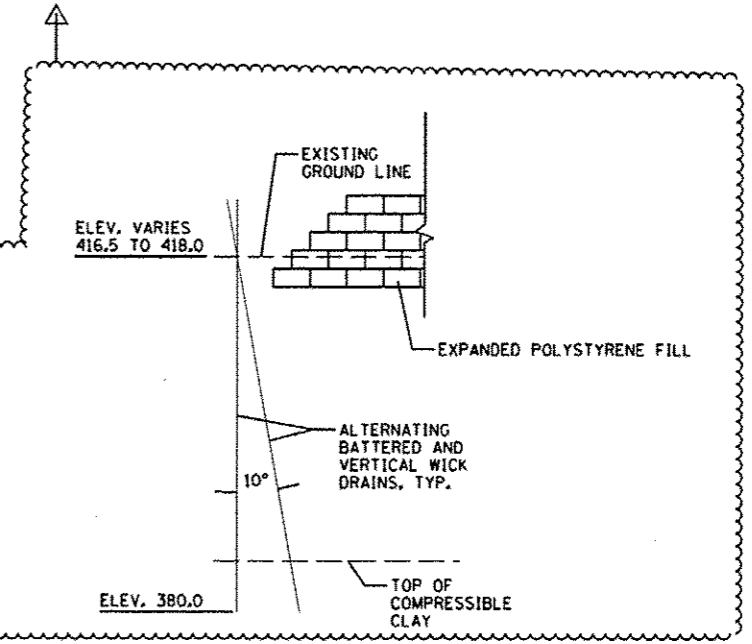
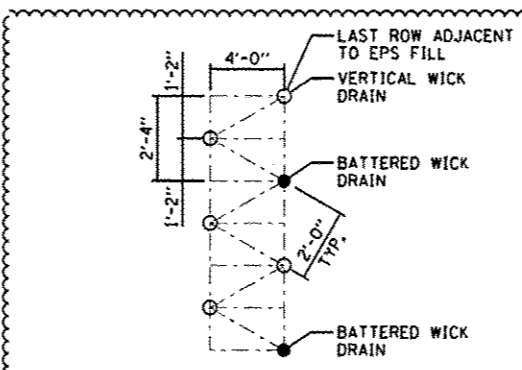
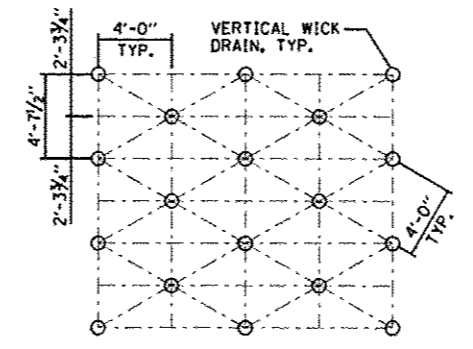
NOTES:

- 1.) WITHIN THE LIMITS SHOWN IN THE PLANS, CONSTRUCT A TWO-FOOT-THICK LAYER OF SAND DRAINAGE BLANKET ON TOP OF THE ONE-FOOT-THICK LAYER OF GRANULAR EMBANKMENT. SPECIAL OR AT THE ELEVATION REQUIRED TO FACILITATE DRAINAGE TO AN ADJACENT PIPE UNDERDRAIN, WHICHEVER ELEVATION IS HIGHER. CONSTRUCT EMBANKMENT AS NEEDED TO RAISE THE ELEVATION OF THE SAND DRAINAGE BLANKET. PROVIDE A MINIMUM 9-FOOT-WIDE BARRIER OF EMBANKMENT BETWEEN THE LIMITS OF THE SAND DRAINAGE BLANKET AND THE FACE OF THE FORESLOPE.
- 2.) IN PLAN, INSTALL THE WICK DRAINS A MINIMUM 10 FEET INSIDE THE LIMITS OF THE SAND DRAINAGE BLANKET. THE WICK DRAINS SHALL BE INSTALLED TO THE TIP ELEVATION SHOWN IN THE "WICK DRAIN TIP ELEVATIONS" TABLE, AND THE TOP CUTOFF SHALL BE ACCORDING TO THE SPECIAL PROVISIONS.
- 3.) PIPE UNDERDRAINS USED TO OUTLET THE SAND DRAINAGE BLANKET SHALL BE EMBEDDED AT LEAST THREE FEET INSIDE THE LIMITS OF THE SAND DRAINAGE BLANKET, SHALL BE CAPPED AT THE UPSTREAM END, AND SHALL HAVE A CONCRETE HEADWALL FOR PIPE DRAINS AT THE EMBANKMENT FORESLOPE. THE COST OF THE CAP SHALL BE INCLUDED IN THE UNDERDRAIN ITEMS. THE HEADWALLS SHALL BE PAID FOR SEPARATELY.
- 4.) THE CONTRACTOR SHALL INSTALL SETTLEMENT PLATFORMS AT THE LOCATIONS AS SHOWN IN THE PLANS AND NOTED BELOW. FURNISHING, INSTALLING, AND MAINTAINING THE SETTLEMENT PLATFORMS SHALL BE ACCORDING TO ARTICLE 204.06 OF THE STANDARD SPECIFICATIONS AND AS DIRECTED BY THE ENGINEER. THE WORK SHALL NOT BE PAID FOR SEPARATELY, BUT SHALL BE CONSIDERED INCLUDED IN THE CONTRACT UNIT PRICE FOR FURNISHED EXCAVATION, AND NO ADDITIONAL COMPENSATION WILL BE ALLOWED.

SETTLEMENT PLATFORM LOCATIONS		
STATION	OFFSET	DAYS REQUIRED FOR 90% CONSOLIDATION
RELOCATED IL RTE 3		
619+00	0'	38
621+00	0'	38

WICK DRAIN TIP ELEVATIONS		
STATION	TO STATION	TIP ELEVATION
RELOCATED IL RTE 3		
618+25	622+56	380.00
623+89	624+74	380.00

PIPE UNDERDRAIN OUTLET ELEVATIONS		
STATION	INVERT ELEVATION	
	LT	RT
RELOCATED IL RTE 3		
618+50	416.50	
619+50	415.50	
620+50	422.50	
621+00		416.50
622+00	416.50	
624+00		416.50



Farnsworth
 GROUP, INC.
 2700 McGraw Drive
 Bloomington, IL 61701-6174
 309/663-5435, 309/663-1571 fax

USER NAME : #USER#
 PLOT SCALE : #SCALE#
 PLOT DATE : #DATE#

DESIGNED - JJO
 DRAWN - JJO
 CHECKED - PJM
 DATE - 10/18/12

REVISED - 02/06/13
 REVISED - 03/18/13
 REVISED - 05/13/13
 REVISED - 6-5-13

STATE OF ILLINOIS
 DEPARTMENT OF TRANSPORTATION

RELOCATED IL RTE 3
 GROUND IMPROVEMENT PLAN
 SCALE: SHEET NO. OF SHEETS STA. TO STA.

F.A.P. RTE.	SECTION	COUNTY	TOTAL SHEETS	SHEET NO.
788	620-1-2-1	ST. CLAIR	121	31A
CONTRACT NO. 76F70				

ILLINOIS FED. AID PROJECT

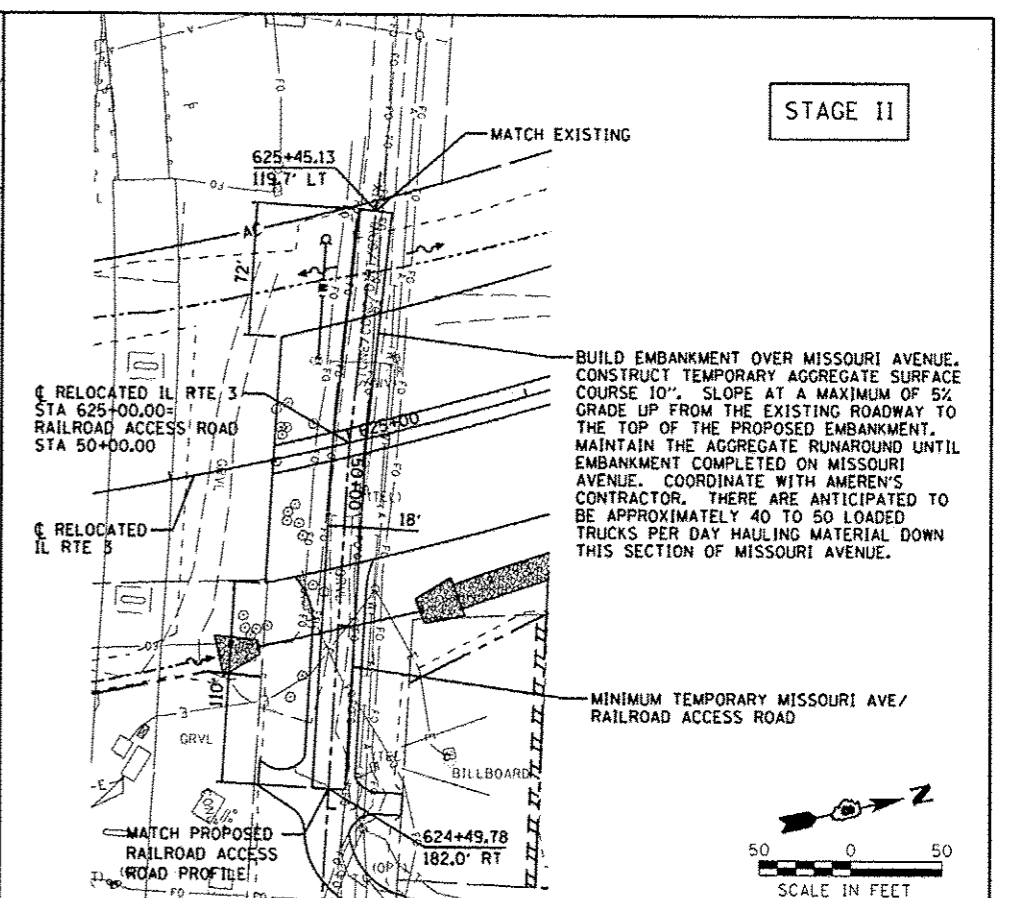
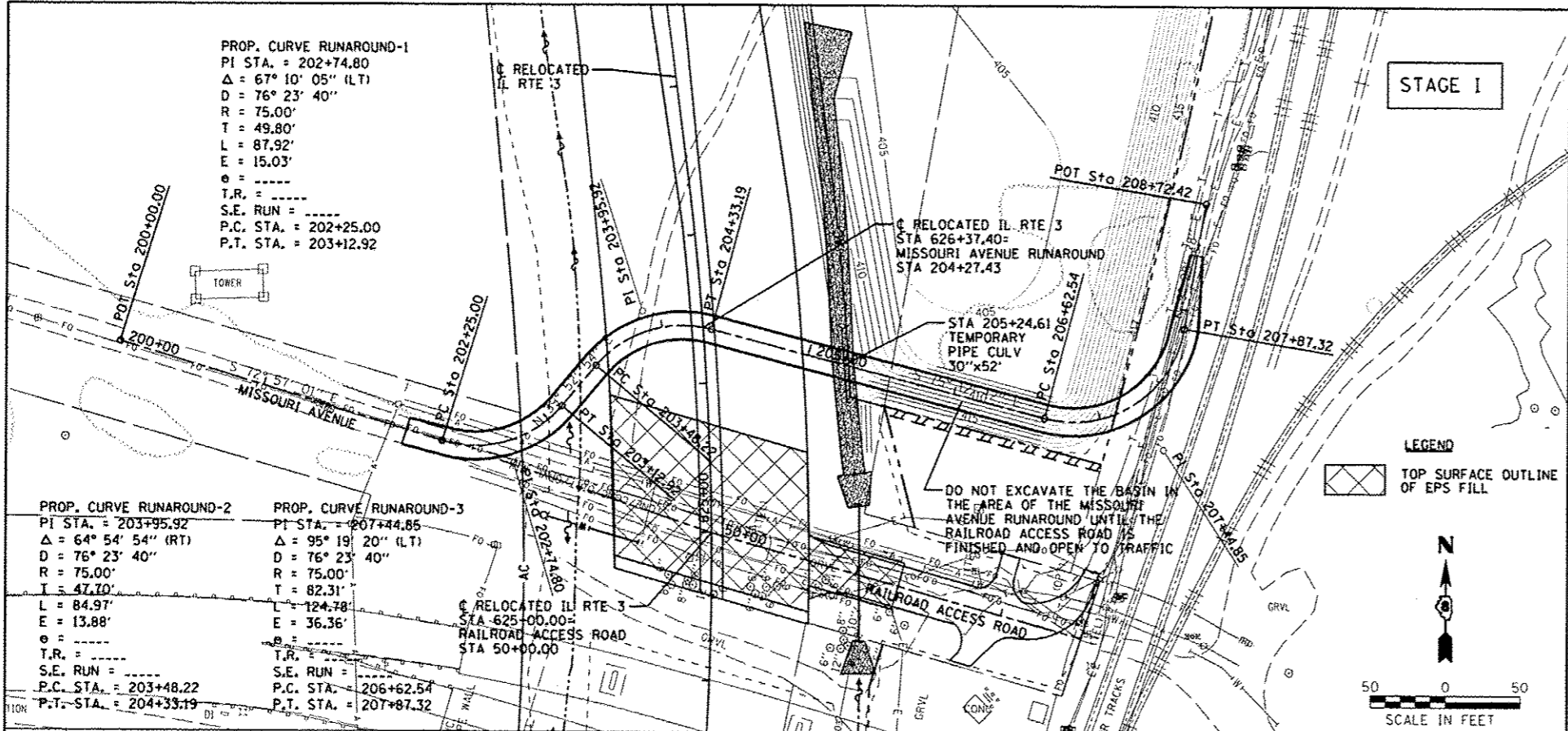
DATE	
BY	
DESIGNED	
DRAWN	
CHECKED	
DATE	

DATE	
BY	
DESIGNED	
DRAWN	
CHECKED	
DATE	

PROP. CURVE RUNAROUND-1
 PI STA. = 202+74.80
 $\Delta = 67^\circ 10' 05''$ (LT)
 $D = 76^\circ 23' 40''$
 $R = 75.00'$
 $T = 49.80'$
 $L = 87.92'$
 $E = 15.03'$
 $\theta = \dots$
 $T.R. = \dots$
 $S.E. RUN = \dots$
 P.C. STA. = 202+25.00
 P.T. STA. = 203+12.92

PROP. CURVE RUNAROUND-2
 PI STA. = 203+95.92
 $\Delta = 64^\circ 54' 54''$ (RT)
 $D = 76^\circ 23' 40''$
 $R = 75.00'$
 $T = 47.70'$
 $L = 84.97'$
 $E = 13.88'$
 $\theta = \dots$
 $T.R. = \dots$
 $S.E. RUN = \dots$
 P.C. STA. = 203+48.22
 P.T. STA. = 204+33.19

PROP. CURVE RUNAROUND-3
 PI STA. = 207+44.85
 $\Delta = 95^\circ 19' 20''$ (LT)
 $D = 76^\circ 23' 40''$
 $R = 75.00'$
 $T = 82.31'$
 $L = 124.78'$
 $E = 36.36'$
 $\theta = \dots$
 $T.R. = \dots$
 $S.E. RUN = \dots$
 P.C. STA. = 206+62.54
 P.T. STA. = 207+87.32

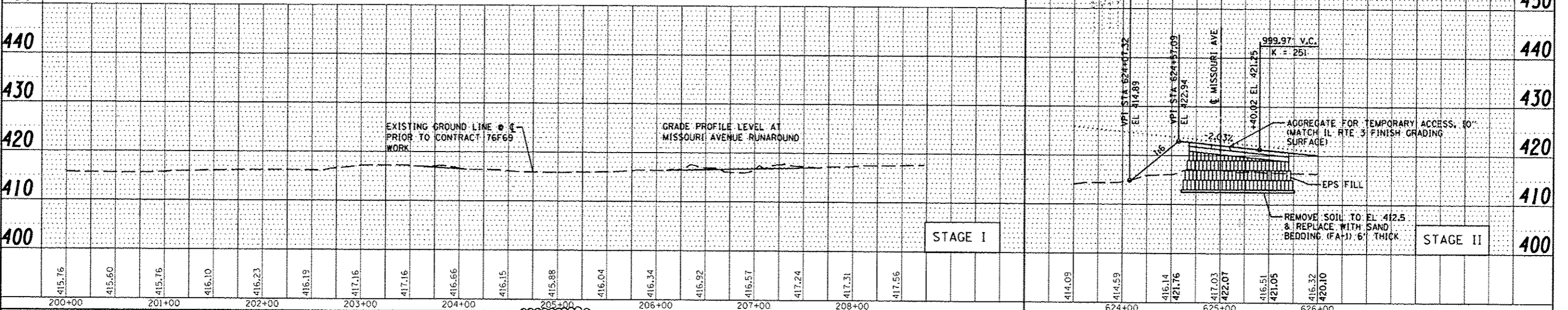
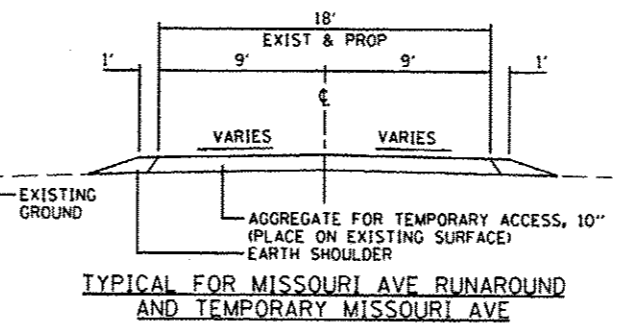


STAGE I NOTES:

1. INSTALL AGGREGATE FOR TEMPORARY ACCESS, 10" FOR RUNAROUND ON THE NORTH SIDE. GRADING FOR TEMPORARY ACCESS SHALL BE INCLUDED IN THE UNIT PRICE BID PER TON FOR AGGREGATE FOR TEMPORARY ACCESS.
2. SWITCH TRAFFIC TO MISSOURI AVENUE RUNAROUND.
3. EXPOSE UTILITIES AND UNDERGROUND OBSTRUCTIONS. REMOVE OBSTRUCTIONS IN CONFLICT WITH EPS FILL.
4. INSTALL SAND BEDDING (FA-1) 6", EPS FILL, FOUNDATION CAP AND MINIMUM 10" SUBBASE GRANULAR MATERIAL, TYPE C.
5. THERE ARE ANTICIPATED TO BE APPROXIMATELY 40 TO 50 LOADED TRUCKS PER DAY HAULING MATERIAL DOWN THIS SECTION OF MISSOURI AVENUE.

NOTE: EXPANDED POLYSTYRENE FILL = EPS FILL

ALIGNMENT COORDINATES - MISSOURI AVENUE RUNAROUND			
STATION	NORTHING	EASTING	
POT 200+00.00	14040602.4899	2449867.6353	
PC 202+25.00	14040536.5191	2450082.7465	
PI 202+74.80	14040521.9176	2450130.3576	
PT 203+12.92	14040560.1325	2450162.2895	
PC 203+48.22	14040587.2183	2450184.9221	
PI 203+95.92	14040623.8234	2450215.5089	
PT 204+33.19	14040611.6408	2450261.6291	
PC 206+62.54	14040553.0675	2450483.3722	
PI 207+44.85	14040532.0460	2450562.9544	
PT 207+87.32	14040613.2350	2450576.5034	
POT 208+72.42	14040697.1722	2450590.5110	



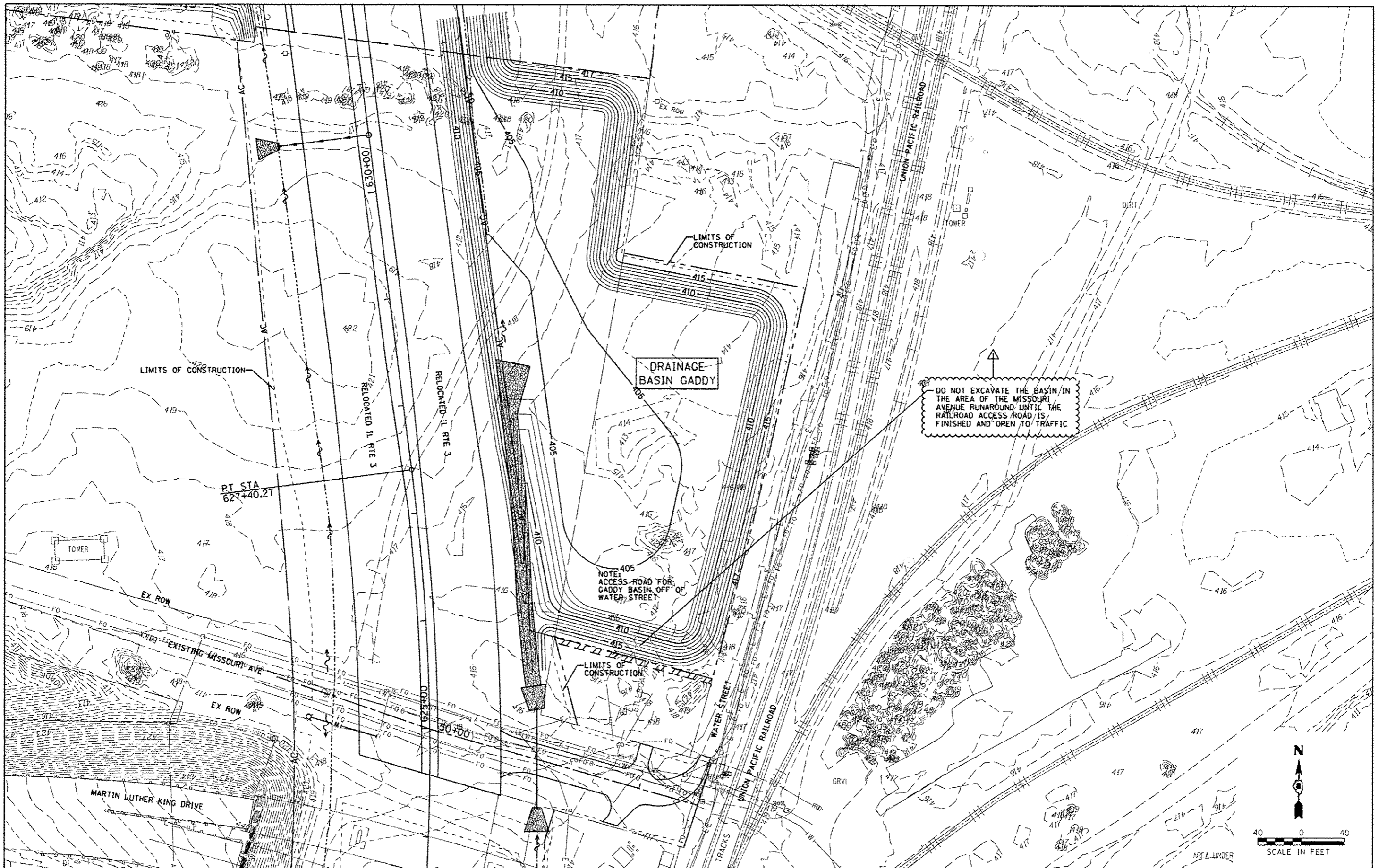
Farnsworth GROUP, INC.
 2709 McGraw Drive
 Bloomington, Illinois 61704
 309/663-8430, 309/663-1571 fax

USER NAME = #USER#	DESIGNED - JJO	REVISED - 6-5-13
PLBT SCALE = #SCALE#	DRAWN - JJO	REVISED -
PLDT DATE = #DATE#	CHECKED - PJM	REVISED -
	DATE - 05/24/13	REVISED -

STATE OF ILLINOIS
 DEPARTMENT OF TRANSPORTATION

MISSOURI AVENUE RUNAROUND
 PLAN & PROFILE

F.A.P. R.I.E.	SECTION	COUNTY	TOTAL SHEETS	SHEET NO.
788	520-1-2-1	ST. CLAIR	121	31C
CONTRACT NO. 76F70				



Farnsworth
GROUP, INC.
2709 McGraw Drive
Bloomington, Illinois 61704
309/663-6435 309/663-1571 fax

USER NAME = #USKRS
DESIGNED - JJO
DRAWN - JJO
CHECKED - PJM
DATE - 10/18/12

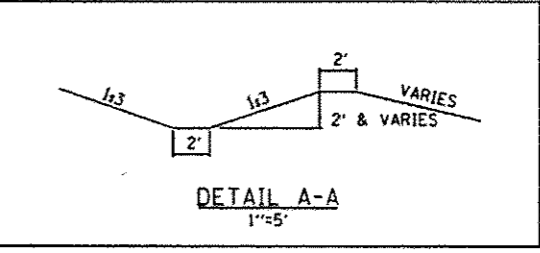
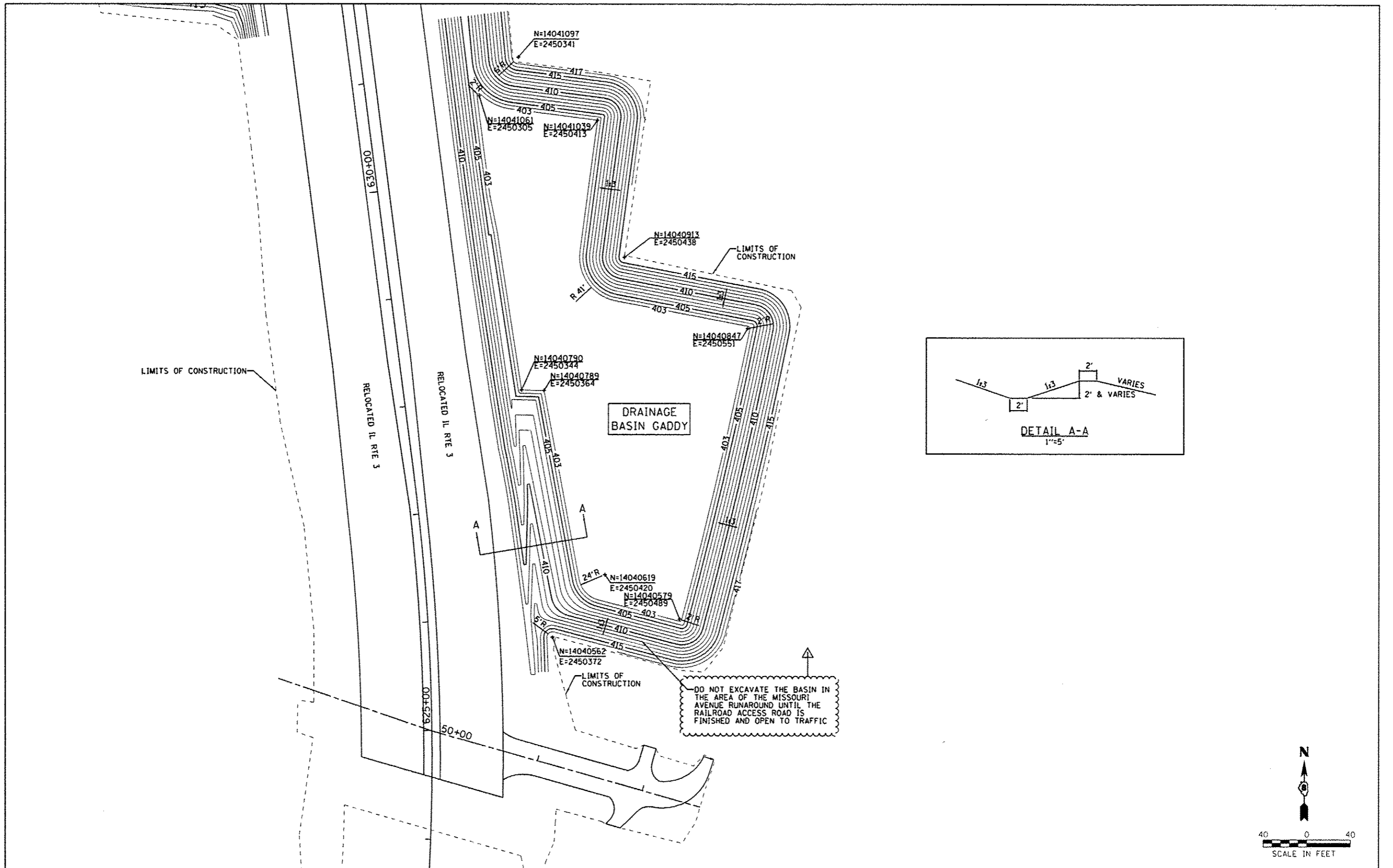
REVIS - 02/06/13
REVIS - 03/18/13
REVIS - 6-5-13
REVIS -

STATE OF ILLINOIS
DEPARTMENT OF TRANSPORTATION

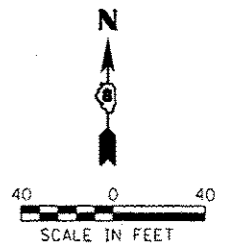
DRAINAGE BASIN GADDY PLAN
(FINAL GRADING)

SCALE: 1"=40'
SHEET NO. OF SHEETS STA. TO STA.

F.A.P. RTE. 788	SECTION 520-1-2-1	COUNTY ST. CLAIR	TOTAL SHEETS 121	SHEET NO. 40
CONTRACT NO. 76F70				
ILLINOIS FED. AID PROJECT				



DO NOT EXCAVATE THE BASIN IN THE AREA OF THE MISSOURI AVENUE RUNAROUND UNTIL THE RAILROAD ACCESS ROAD IS FINISHED AND OPEN TO TRAFFIC



Farnsworth GROUP, INC. 2709 McGraw Drive Bloomington, Illinois 61704 309-663-8435, 309-663-1671 fax	USER NAME * #USER#	DESIGNED - JJO	REVISED - 02/06/13	STATE OF ILLINOIS DEPARTMENT OF TRANSPORTATION	DRAINAGE BASIN GADDY LAYOUT (EXCAVATION)			F.A.P. RTE. 788	SECTION 520-1-2-1	COUNTY ST. CLAIR	TOTAL SHEETS 121	SHEET NO. 40A	
	PLOT SCALE * #SCALE#	CHECKED - PJM	REVISED - 03/18/13					SCALE: 1"=40' SHEET NO. OF SHEETS STA. TO STA.			CONTRACT NO. 76F70 ILLINOIS FED. AID PROJECT		
	PLT DATE * #DATE#	DATE - 10/18/12	REVISED - 6-5-13										

LIMITS OF CONSTRUCTION

RELOCATED IL RTE 3

RELOCATED IL RTE 3

50+00

00+05.9

00+52.9

N=14041097
E=2450341

N=14041042
E=2450417

N=14040974
E=2450305

N=14040955
E=2450407

N=14040913
E=2450438

N=14040884
E=2450339

N=14040849
E=2450555

N=14040781
E=2450357

DRAINAGE
BASIN GADDY

N=14040719
E=2450443

N=14040674
E=2450434

N=14040619
E=2450420

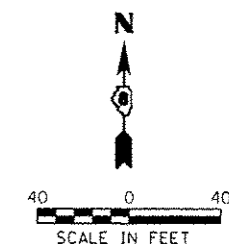
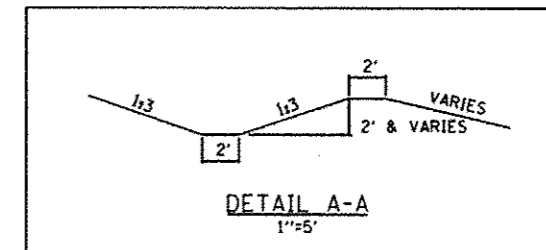
N=14040575
E=2450491

N=14040562
E=2450372

LIMITS OF
CONSTRUCTION

DO NOT EXCAVATE THE BASIN IN
THE AREA OF THE MISSOURI
AVENUE RUNAROUND UNTIL THE
RAILROAD ACCESS ROAD IS
FINISHED AND OPEN TO TRAFFIC

LIMITS OF
CONSTRUCTION



Farnsworth
GROUP, INC.
2700 McGraw Drive
Bloomington, Illinois 61704
309/663-8435, 309/663-1971 fax

USER NAME : #USER#
DESIGNED : JJQ
DRAWN : JJQ
CHECKED : PJM
DATE : 10/18/12

REVISOR : JJQ
REVISION : 02/06/13
REVISION : 03/18/13
REVISION : 6-5-13

REVISION : 6-5-13

STATE OF ILLINOIS
DEPARTMENT OF TRANSPORTATION

DRAINAGE BASIN GADDY LAYOUT
(FINAL GRADING)

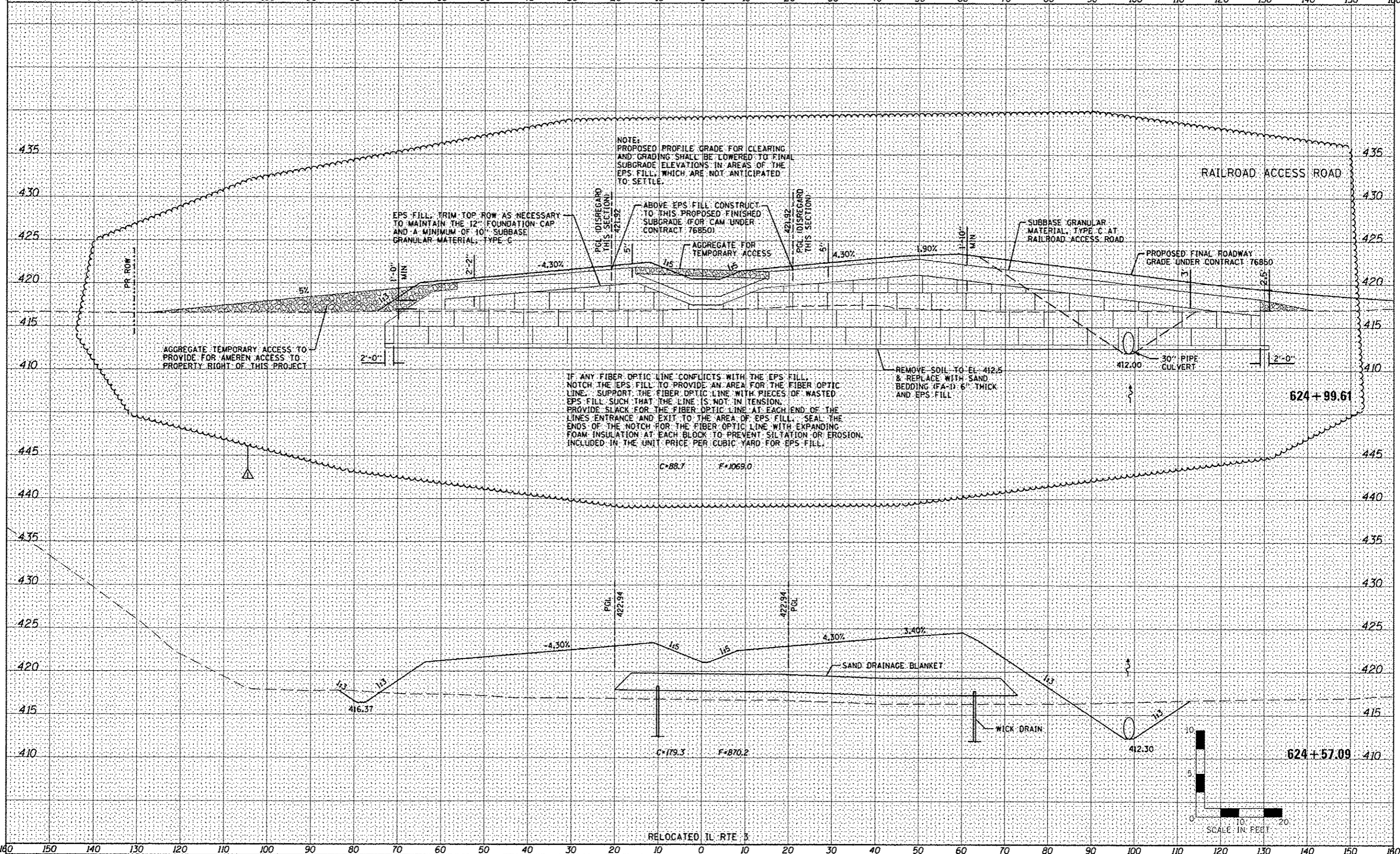
SCALE: 1''=40' SHEET NO. OF SHEETS STA. TO STA.

F.A.P. RTE.	SECTION	COUNTY	TOTAL SHEETS	SHEET NO.
788	520-1-2-1	ST. CLAIR	121	41
CONTRACT NO. 76F70				
ILLINOIS FED. AID PROJECT				

140 150 140 130 120 110 100 90 80 70 60 50 40 30 20 10 0 10 20 30 40 50 60 70 80 90 100 110 120 130 140 150 160

DATE	
BY	
DESIGNED	
DRAWN	
CHECKED	
DATE	
BY	
DESIGNED	
DRAWN	
CHECKED	
DATE	
BY	

DATE	
BY	
DESIGNED	
DRAWN	
CHECKED	
DATE	
BY	
DESIGNED	
DRAWN	
CHECKED	
DATE	
BY	



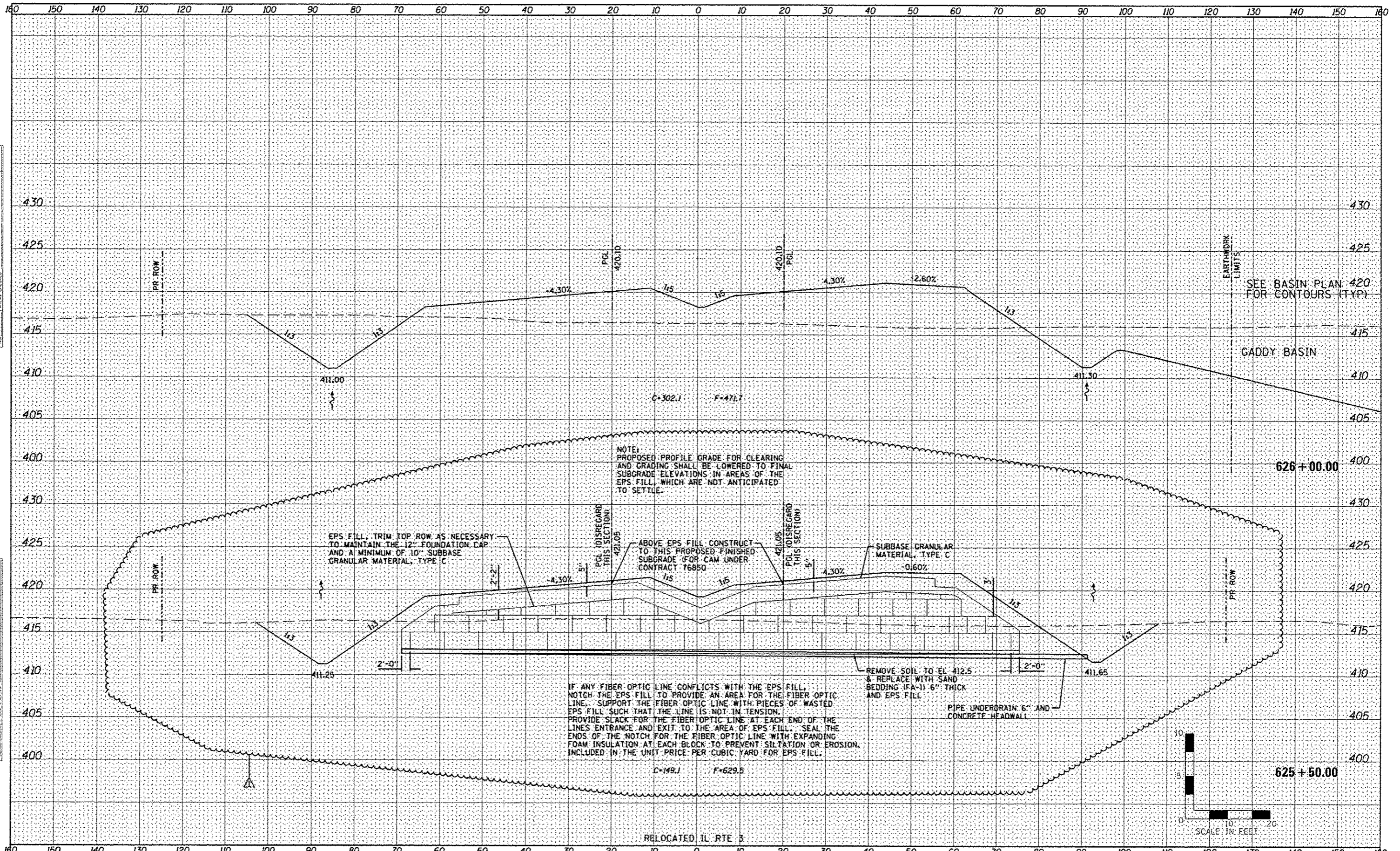
Farnsworth GROUP, INC.
 2700 MacArthur Drive
 Bloomington, Illinois 61704
 309.663.8435 309.663.1274 fax

USER NAME	USERS	DESIGNED	JJO	REVISED	02/28/12
PLOT SCALE	SCALE	DRAWN	JJO	REVISED	6-5-13
PLOT DATE	08/02/12	CHECKED	PJM	REVISED	
		DATE	10/18/12	REVISED	

STATE OF ILLINOIS
DEPARTMENT OF TRANSPORTATION

RELOCATED IL RTE 3			
CROSS SECTIONS			
SCALE:	SHEET NO. OF SHEETS	STA. 624+57.09 TO STA. 624+99.61	

F.A.P. RTE.	SECTION	COUNTY	TOTAL SHEETS	SHEET NO.
788	520-1-2-1	ST. CLAIR	121	67
CONTRACT NO. 76F70				
ILLINOIS FED. AID PROJECT				



DATE	
BY	
NO.	
DATE	
BY	
NO.	
DATE	
BY	
NO.	

DATE	
BY	
NO.	
DATE	
BY	
NO.	
DATE	
BY	
NO.	

NOTE: PROPOSED PROFILE GRADE FOR CLEARING AND GRADING SHALL BE LOWERED TO FINAL SUBGRADE ELEVATIONS IN AREAS OF THE EPS FILL, WHICH ARE NOT ANTICIPATED TO SETTLE.

EPS FILL, TRIM TOP ROW AS NECESSARY TO MAINTAIN THE 12" FOUNDATION CAP AND A MINIMUM OF 10" SUBBASE GRANULAR MATERIAL, TYPE C

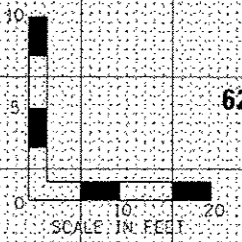
ABOVE EPS FILL CONSTRUCT TO THIS PROPOSED FINISHED SUBGRADE (FOR CAM UNDER CONTRACT 76850)

SUBBASE GRANULAR MATERIAL, TYPE C

IF ANY FIBER OPTIC LINE CONFLICTS WITH THE EPS FILL, NOTCH THE EPS FILL TO PROVIDE AN AREA FOR THE FIBER OPTIC LINE. SUPPORT THE FIBER OPTIC LINE WITH PIECES OF WASTED EPS FILL SUCH THAT THE LINE IS NOT IN TENSION. PROVIDE SLACK FOR THE FIBER OPTIC LINE AT EACH END OF THE LINES ENTRANCE AND EXIT TO THE AREA OF EPS FILL. SEAL THE ENDS OF THE NOTCH FOR THE FIBER OPTIC LINE WITH EXPANDING FOAM INSULATION AT EACH BLOCK TO PREVENT SILTATION OR EROSION. INCLUDED IN THE UNIT PRICE PER CUBIC YARD FOR EPS FILL.

REMOVE SOIL TO EL 412.5 & REPLACE WITH SAND BEDDING (FA-1) 6" THICK AND EPS FILL

PIPE UNDERDRAIN 6" AND CONCRETE HEADWALL



SEE BASIN PLAN 420 FOR CONTOURS (TYP)

GADDY BASIN

626 + 00.00

625 + 50.00

RELOCATED IL RTE 3

RELOCATED IL RTE 3
CROSS SECTIONS

Farnsworth GROUP INC.
2709 McGraw Hill Drive
Bloomington, Illinois 61704
309663-8435 309593-1674 fax

USER NAME = *USER18
DESIGNED - JJO
DRAWN - JJO
CHECKED - PJM
DATE - 10/18/12

REVISIONS
02/06/11
6-5-13

REVISIONS
02/06/11
6-5-13

STATE OF ILLINOIS
DEPARTMENT OF TRANSPORTATION

SCALE: SHEET NO. OF SHEETS STA. 625+50.00 TO STA. 626+00.00

F.A.P. RTE.	SECTION	COUNTY	TOTAL SHEETS	SHEET NO.
788	520-1-2-1	ST. CLAIR	121	68
				CONTRACT NO. 76770
ILLINOIS FED. AID PROJECT				