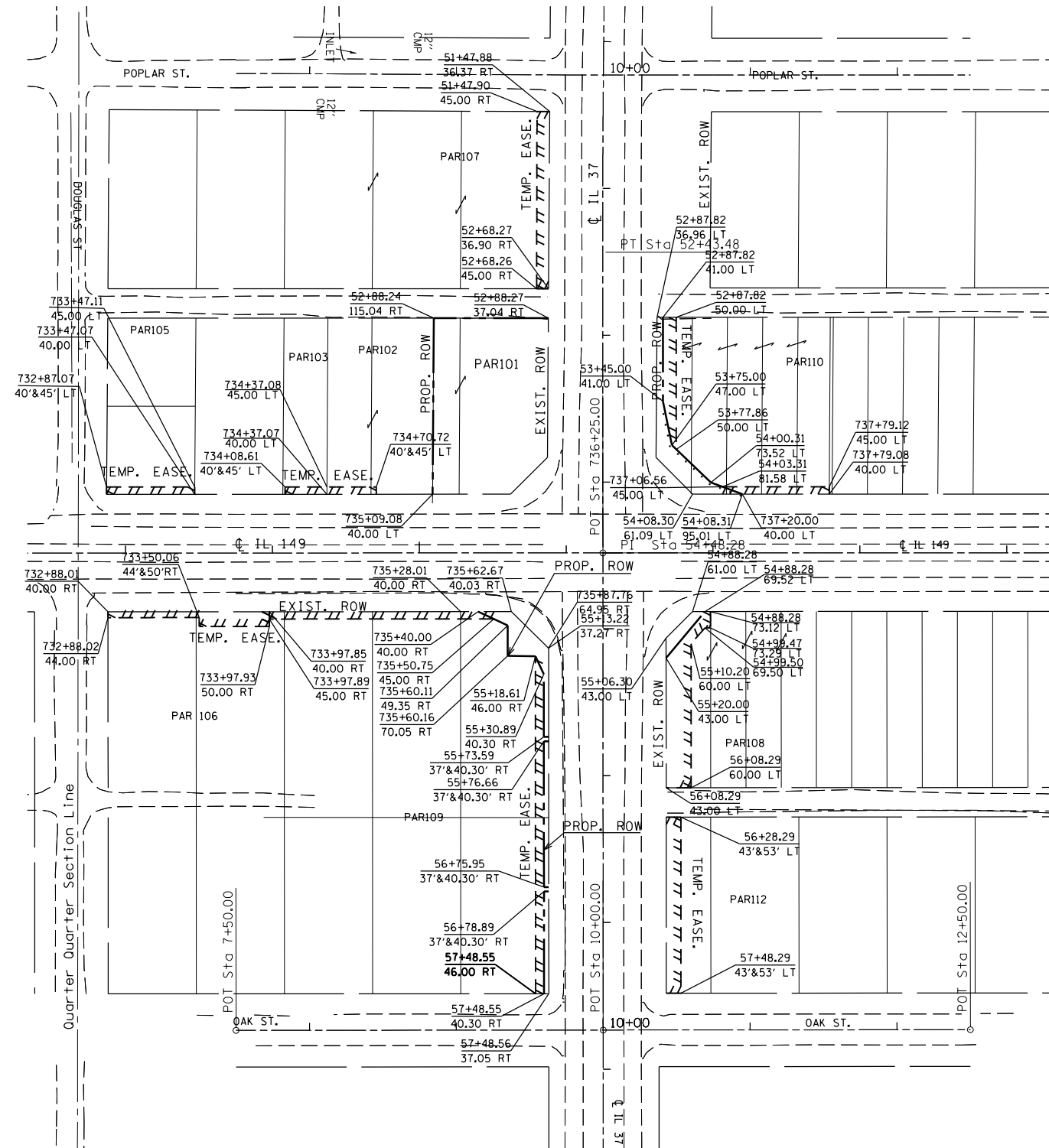


NE Quarter, SE Quarter  
 Section 24  
 T. 7 S., R. 2 E., 3rd P.M.



PARCEL	NAME	PURPOSE	ACREAGE
101	TERRY PODSCHWEIT	ROW	TOTAL TAKE
102	FRANK CHORNAK	TEMP. EASE.	.004
103	RYAN RIDGEWAY	TEMP. EASE.	.003
105	SOUTHERN ILLINOIS LAND TRUST	TEMP. EASE.	.007
106	RANDY RAUBACH	TEMP. EASE.	.017
107	DIRTBUSTER CAR WASH	TEMP. EASE.	.023
108	SAM MITCHELL	TEMP. EASE. ROW	.040 .008
109	CVS PHARMACY	TEMP. EASE. ROW	.046 .032
110	STEVE LAZORCHAK	TEMP. EASE. ROW	.024 .026
112	JOHN BOWMAN TRUST	TEMP. EASE.	.028

**COORDINATES**

PT JH1	N 448802.70	E 811539.64	PT JT42	N 448687.68	E 811619.98
PT JT1	N 449027.65	E 811539.72	PT JT43	N 448687.69	E 811629.98
PT JT2	N 449027.63	E 811461.71	PT JT44	N 448567.69	E 811630.06
PT JT3	N 448907.63	E 811460.93	PT JT45	N 448567.68	E 811620.06
PT JT6	N 448827.64	E 811491.87	PT JT46	N 448816.49	E 811646.39
PT JT8	N 448818.29	E 811511.99	PT JT47	N 448817.60	E 811349.81
PT JT9	N 448797.59	E 811512.04	PT JT48	N 448912.60	E 811388.93
PT JT10	N 448797.30	E 811530.91	PT JT49	N 448907.61	E 811388.92
PT JT11	N 448785.03	E 811536.62	PT JT50	N 448912.57	E 811238.92
PT JT12	N 448567.36	E 811536.76	PT JT51	N 448907.57	E 811238.92
PT JT13	N 448822.60	E 811349.77	PT JT52	N 448907.58	E 811298.92
PT JT14	N 448827.60	E 811349.72	PT JT53	N 448912.58	E 811298.95
PT JT15	N 448823.57	E 811239.89	PT JT54	N 448907.60	E 811360.46
PT JT16	N 448827.57	E 811239.89	PT JT55	N 448912.60	E 811360.46
PT JT17	N 449168.34	E 811532.01	PT JT56	N 448912.62	E 811422.57
PT JT19	N 449047.65	E 811531.74	PT JT57	N 448907.62	E 811422.57
PT JT20	N 449047.65	E 811539.85	PT JT58	N 448817.58	E 811301.93
PT JT21	N 449168.30	E 811540.64	PT JT59	N 448823.58	E 811301.93
PT JT22	N 448970.97	E 811617.79	PT JT60	N 448938.11	E 811626.82
PT JT23	N 449028.15	E 811617.76	PT JT61	N 449028.16	E 811626.76
PT JT24	N 448940.97	E 811623.81	PT JT66	N 448742.32	E 811536.64
PT JT25	N 449028.15	E 811613.72	PT JT67	N 448742.32	E 811539.94
PT JT27	N 448907.68	E 811637.93	PT JT68	N 448739.26	E 811539.95
PT JT28	N 448907.69	E 811671.85	PT JT69	N 448739.26	E 811536.65
PT JT29	N 448915.68	E 811650.35	PT JT70	N 448567.36	E 811531.06
PT JT30	N 448912.69	E 811658.41	PT JT71	N 448639.97	E 811536.71
PT JT31	N 448912.71	E 811730.96	PT JT72	N 448639.97	E 811540.01
PT JT32	N 448907.72	E 811730.93	PT JT73	N 448637.02	E 811540.01
PT JT33	N 448822.64	E 811502.63	PT JT74	N 448637.02	E 811536.71
PT JT34	N 448827.64	E 811479.89	PT JT149	N 448816.52	E 811650.19
PT JT35	N 448795.97	E 811619.91	PT JT150	N 448827.71	E 811650.00
PT JT36	N 448827.68	E 811646.39	PT REBAR7	N 448827.61	E 811514.54
PT JT37	N 448827.68	E 811637.89	PT REBAR8	N 448567.36	E 811540.01
PT JT38	N 448809.68	E 811619.90			
PT JT39	N 448805.78	E 811636.90			
PT JT40	N 448707.70	E 811636.97			
PT JT41	N 448707.68	E 811619.97			