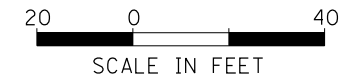


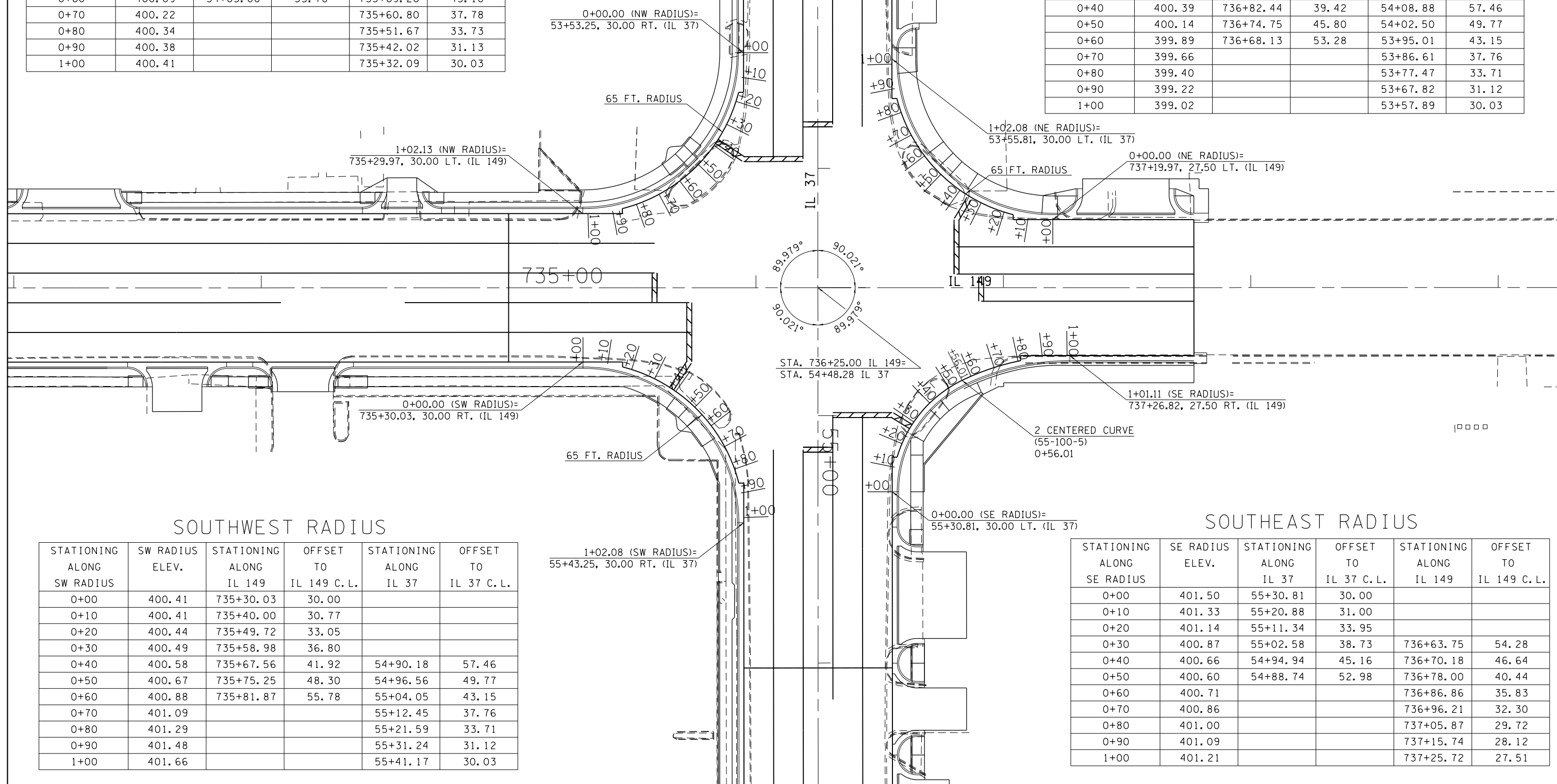
### NORTHWEST RADIUS

STATIONING ALONG NW RADIUS	NW RADIUS ELEV.	STATIONING ALONG IL 37	OFFSET TO IL 37 C.L.	STATIONING ALONG IL 149	OFFSET TO IL 149 C.L.
0+00	398.91	53+53.25	30.00		
0+10	399.13	53+63.21	30.77		
0+20	399.31	53+72.93	33.05		
0+30	399.51	53+82.19	36.80		
0+40	399.70	53+90.77	41.92	735+83.05	41.92
0+50	399.88	53+98.46	48.30	735+76.68	49.80
0+60	400.09	54+05.08	55.78	735+69.20	43.18
0+70	400.22			735+60.80	37.78
0+80	400.34			735+51.67	33.73
0+90	400.38			735+42.02	31.13
1+00	400.41			735+32.09	30.03



### NORTHEAST RADIUS

STATIONING ALONG NE RADIUS	NE RADIUS ELEV.	STATIONING ALONG IL 149	OFFSET TO IL 149 C.L.	STATIONING ALONG IL 37	OFFSET TO IL 37 C.L.
0+00	401.15	737+19.97	27.50		
0+10	401.03	737+10.01	28.27		
0+20	400.88	737+00.28	30.55		
0+30	400.63	736+91.02	34.30		
0+40	400.39	736+82.44	39.42	54+08.88	57.46
0+50	400.14	736+74.75	45.80	54+02.50	49.77
0+60	399.89	736+68.13	53.28	53+95.01	43.15
0+70	399.66			53+86.61	37.76
0+80	399.40			53+77.47	33.71
0+90	399.22			53+67.82	31.12
1+00	399.02			53+57.89	30.03



### SOUTHWEST RADIUS

STATIONING ALONG SW RADIUS	SW RADIUS ELEV.	STATIONING ALONG IL 149	OFFSET TO IL 149 C.L.	STATIONING ALONG IL 37	OFFSET TO IL 37 C.L.
0+00	400.41	735+30.03	30.00		
0+10	400.41	735+40.00	30.77		
0+20	400.44	735+49.72	33.05		
0+30	400.49	735+58.98	36.80		
0+40	400.58	735+67.56	41.92	54+90.18	57.46
0+50	400.67	735+75.25	48.30	54+96.56	49.77
0+60	400.88	735+81.87	55.78	55+04.05	43.15
0+70	401.09			55+12.45	37.76
0+80	401.29			55+21.59	33.71
0+90	401.48			55+31.24	31.12
1+00	401.66			55+41.17	30.03

### SOUTHEAST RADIUS

STATIONING ALONG SE RADIUS	SE RADIUS ELEV.	STATIONING ALONG IL 37	OFFSET TO IL 37 C.L.	STATIONING ALONG IL 149	OFFSET TO IL 149 C.L.
0+00	401.50	55+30.81	30.00		
0+10	401.33	55+20.88	31.00		
0+20	401.14	55+11.34	33.95		
0+30	400.87	55+02.58	38.73	736+63.75	54.28
0+40	400.66	54+94.94	45.16	736+70.18	46.64
0+50	400.60	54+88.74	52.98	736+78.00	40.44
0+60	400.71			736+86.86	35.83
0+70	400.86			736+96.21	32.30
0+80	401.00			737+05.87	29.72
0+90	401.09			737+15.74	28.12
1+00	401.21			737+25.72	27.51

FILE NAME =	USER NAME = pufferaa	DESIGNED -	REVISED -
ct:\pw\work\puidot\pufferaa\10293206\78288-sh1-plpr.dgn		DRAWN -	REVISED -
Default	PLOT SCALE = 40.0000' / in.	CHECKED -	REVISED -
	PLOT DATE = 3/22/2013	DATE -	REVISED -

**STATE OF ILLINOIS  
DEPARTMENT OF TRANSPORTATION**

**GEOMETRIC SHEET**

SCALE: SHEET OF SHEETS STA. TO STA.

F.A.U. RTE.	SECTION	COUNTY	TOTAL SHEETS	SHEET NO.
9481	12(N-1)	FRANKLIN	94	35
CONTRACT NO. 78288			ILLINOIS FED. AID PROJECT	