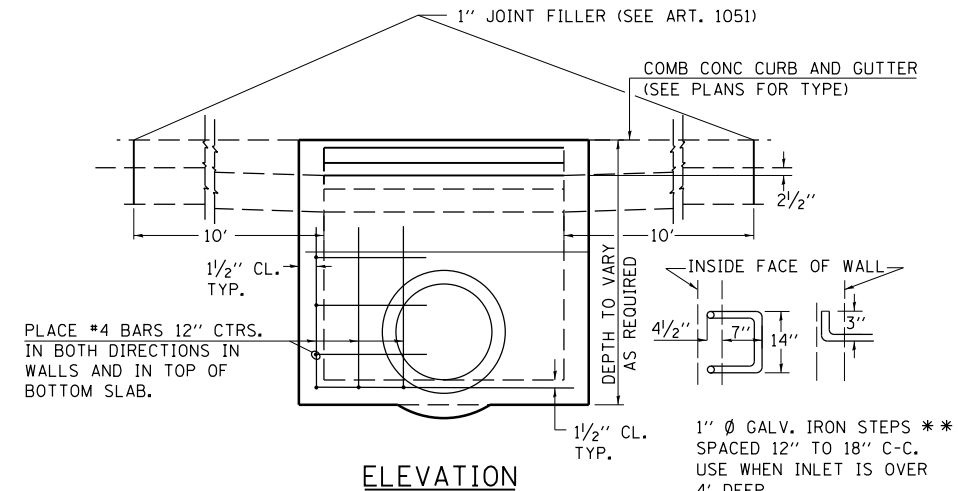
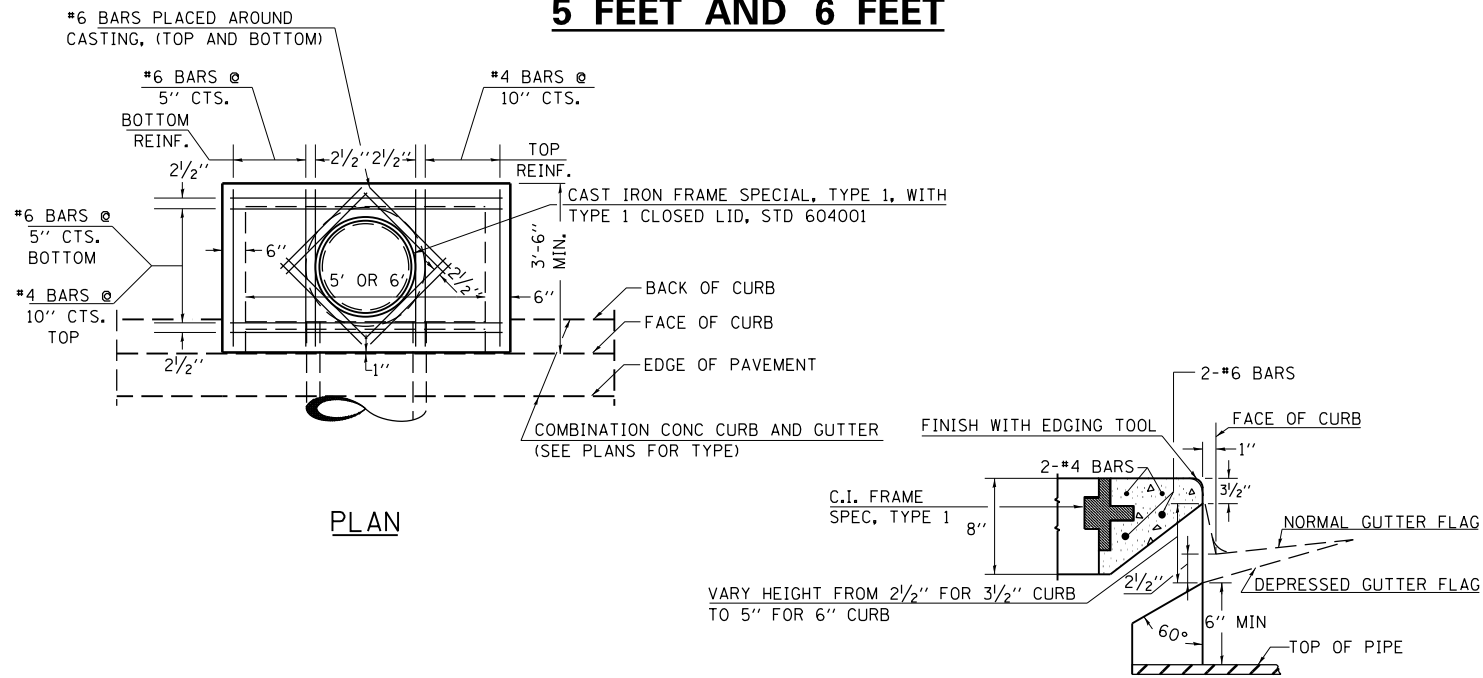
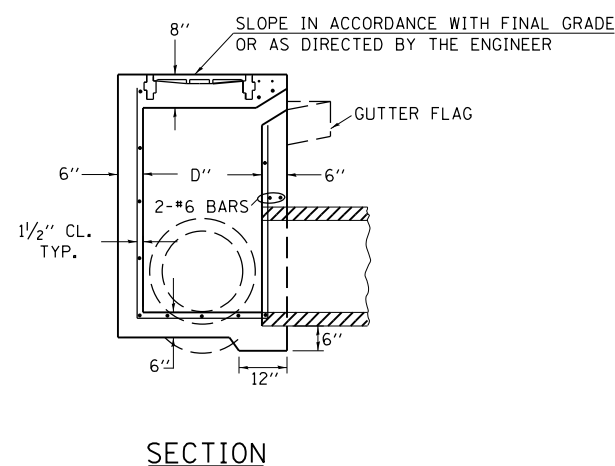


## DETAILS OF INLET SPECIAL, TYPE 3, 5 FEET AND 6 FEET



DESIGN	PIPE DIA	"D"
A	18" & LESS	2'-6"
B	21" & 24"	3'-0"
C	27" & 30"	3'-7"
D	33" & 36"	4'-2"
E	42"	4'-9"
F	48"	5'-0"
G	54"	6'-1"



### NOTE TO DESIGNER:

WHEN USING THIS STANDARD THE DESIGNER SHOULD ALSO CHECK BDE SPECIAL PROVISION 419 "PRECAST CONCRETE PRODUCTS".

REVISIONS			
REDRAWN	2-15-89	REVISED	3-26-08
REVISED	8-15-94	REVISED	
REVISED	1-19-99	REVISED	
REVISED	5-6-04	REVISED	

STD. 9-1

### NOTES:

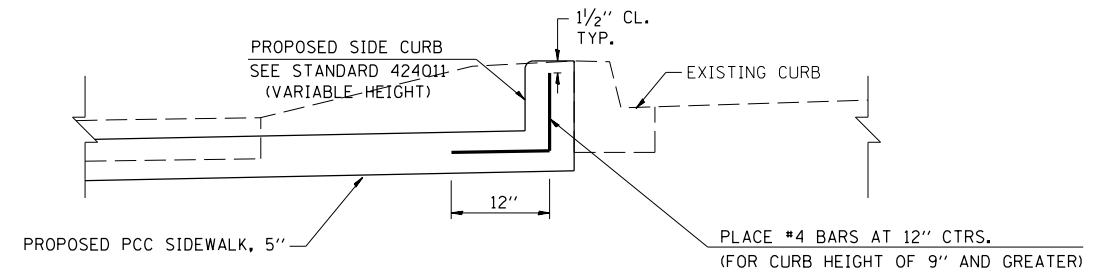
PROVIDE 1/2" CLEARANCE TYP. ALL REINFORCEMENT UNLESS OTHERWISE SPECIFIED.

CLASS SI CONCRETE SHALL BE USED THROUGHOUT. SET FACE OF INLET 1" BEHIND FACE OF CURB. DEPRESS GUTTER FLOWLINE AT INLET 2 1/2" BELOW NORMAL GUTTER FLOWLINE. CONSTRUCT TRANSITION IN FLOWLINE IN 10 FEET EACH SIDE OF INLET. PIPES TO BE CONNECTED TO INLET AS SHOWN ON STORM SEWER LAYOUT.

INLETS WILL BE PAID FOR AT THE CONTRACT UNIT PRICE EACH FOR **INLET, SPECIAL, TYPE 3, 5 FEET** OR **INLET, SPECIAL, TYPE 3, 6 FEET** WHICH PRICE SHALL INCLUDE THE CAST IRON FRAME, SPECIAL, TYPE 1 WITH TYPE 1 CLOSED LID, THE REINFORCEMENT BARS, METAL STEPS AND JOINT FILLER.

\*\*THE GALVANIZED IRON STEPS AS DETAILED HEREON ARE TYPICAL. STEPS OF OTHER DESIGN AND MATERIAL THAT WILL CONFORM TO THE MINIMUM REQUIREMENTS OF THE STEPS SHOWN, MAY BE USED WHEN APPROVED BY THE ENGINEER.

IF THE INLET IS NOT CAST IN PLACE THEN THE INLET SHALL BE PRODUCED ACCORDING TO THE DEPARTMENT'S CURRENT POLICY MEMORANDUM, "QUALITY CONTROL/QUALITY ASSURANCE PROGRAM FOR PRECAST CONCRETE PRODUCTS".

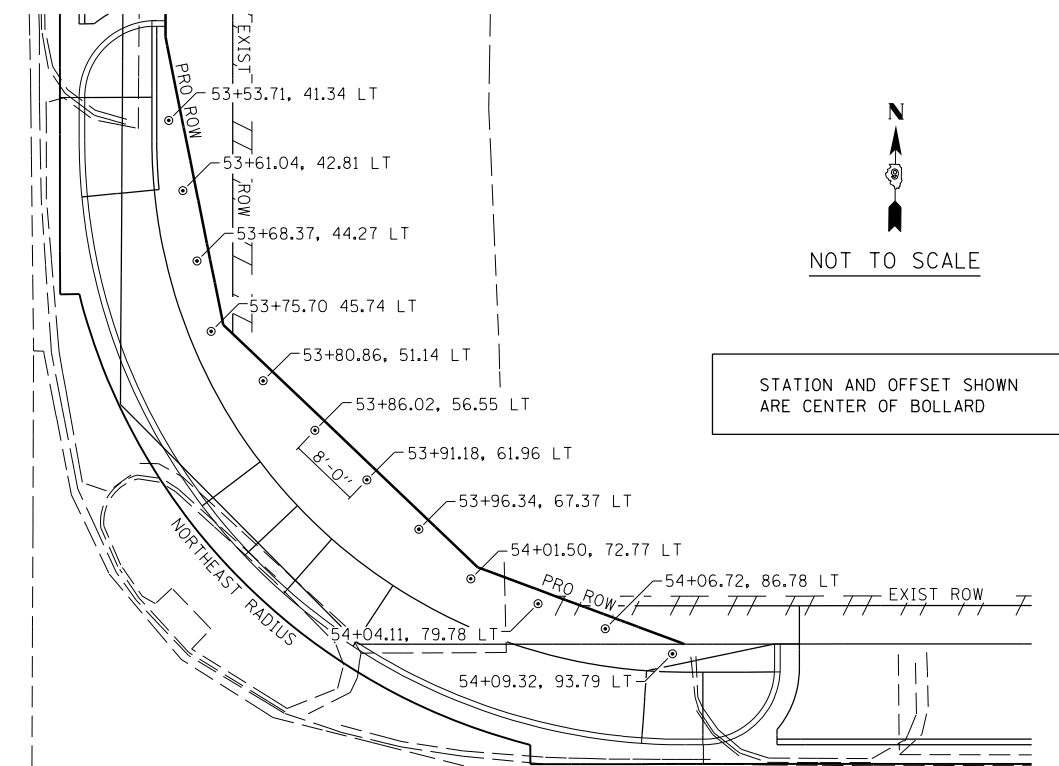


SIDEWALK CURB DETAIL TO BE USED ON IL 37 AT DIRTBUSTER CARWASH AND CVS PHARMACY. (SEE IL 37 CROSS SECTIONS)

APPROXIMATE LOCATION REINFORCEMENT WILL BE REQUIRED IS STA. 55+28 TO 55+70 RT. IL37. FINAL LOCATIONS TO BE DETERMINED BY THE ENGINEER.

ALL PROPOSED SIDEWALK CURB AND REINFORCEMENT TO BE INCLUDED IN THE COST OF PCC SIDEWALK, 5"

## SIDEWALK CURB DETAIL



## BOLLARD LOCATION DETAIL

FILE NAME =	USER NAME = \$USER\$	DESIGNED -	REVISED -
ei:\pw\work\p\dot\puffer\ea\10293206\78288-sh\plan.dgn		DRAWN -	REVISED -
	PLOT SCALE = 100.0000' / 1in.	CHECKED -	REVISED -
	PLOT DATE = 3/22/2013	DATE -	REVISED -

**STATE OF ILLINOIS  
DEPARTMENT OF TRANSPORTATION**

SCALE:	SHEET NO.	OF SHEETS	STA.	TO STA.
--------	-----------	-----------	------	---------

F.A.U. R.E.	SECTION	COUNTY	TOTAL SHEETS	SHEET NO.
9481	12(N-1)	FRANKLIN	94	54
CONTRACT NO. 78288				
ILLINOIS FED. AID PROJECT				