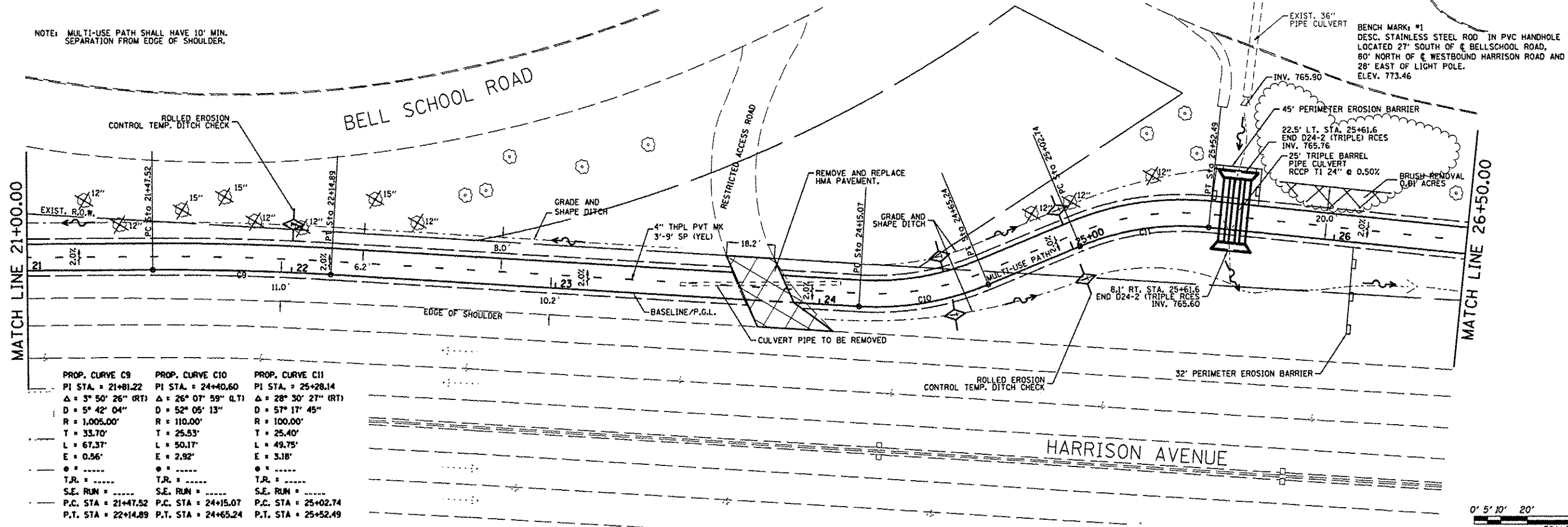
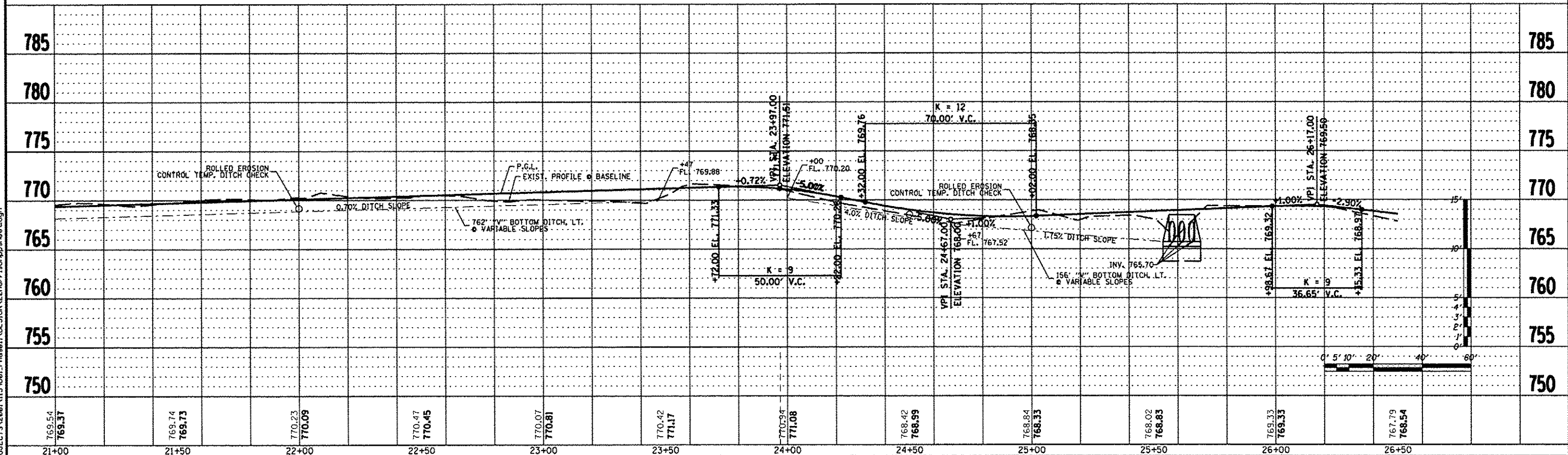


NOTE: MULTI-USE PATH SHALL HAVE 10' MIN. SEPARATION FROM EDGE OF SHOULDER.



PROP. CURVE C9	PROP. CURVE C10	PROP. CURVE C11
PI STA. = 21+81.22	PI STA. = 24+40.60	PI STA. = 25+28.14
Δ = 3° 50' 26" (RT)	Δ = 26° 07' 59" (L)	Δ = 28° 30' 27" (RT)
D = 5' 42' 04"	D = 52' 05' 13"	D = 57' 17' 45"
R = 1,005.00'	R = 110.00'	R = 100.00'
T = 33.70'	T = 25.53'	T = 25.40'
L = 67.37'	L = 50.17'	L = 49.75'
E = 0.56'	E = 2.92'	E = 3.18'
T.R. =	T.R. =	T.R. =
S.E. RUN =	S.E. RUN =	S.E. RUN =
P.C. STA = 21+47.52	P.C. STA = 24+15.07	P.C. STA = 25+02.74
P.T. STA = 22+14.89	P.T. STA = 24+65.24	P.T. STA = 25+52.49



FILE: S:\PROJECTS\2008\1139001\Phase1\DESIGN\22\harrison\perryville.dgn

REVISION	DATE	BY	REMARKS
1	03/22/13	TJA	100% COMMENTS FROM JAN. 28, 2013

WINNEBAGO COUNTY
VILLAGE OF CHERRY VALLEY
PERRYVILLE PATH SOUTHEAST CONNECTION



PERRYVILLE PATH PLAN & PROFILE
 STA. 21+00.00 - STA. 26+50.00

SECTION	COUNTY	TOTAL SHEETS	SHEET NO.
01-00302-00-BT	WINNEBAGO	124	22
STA. 00+00.00 - STA. 172+20.37			
WHA #: 1139001	DATE: 03/01/2013		