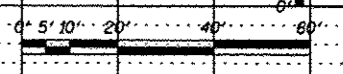
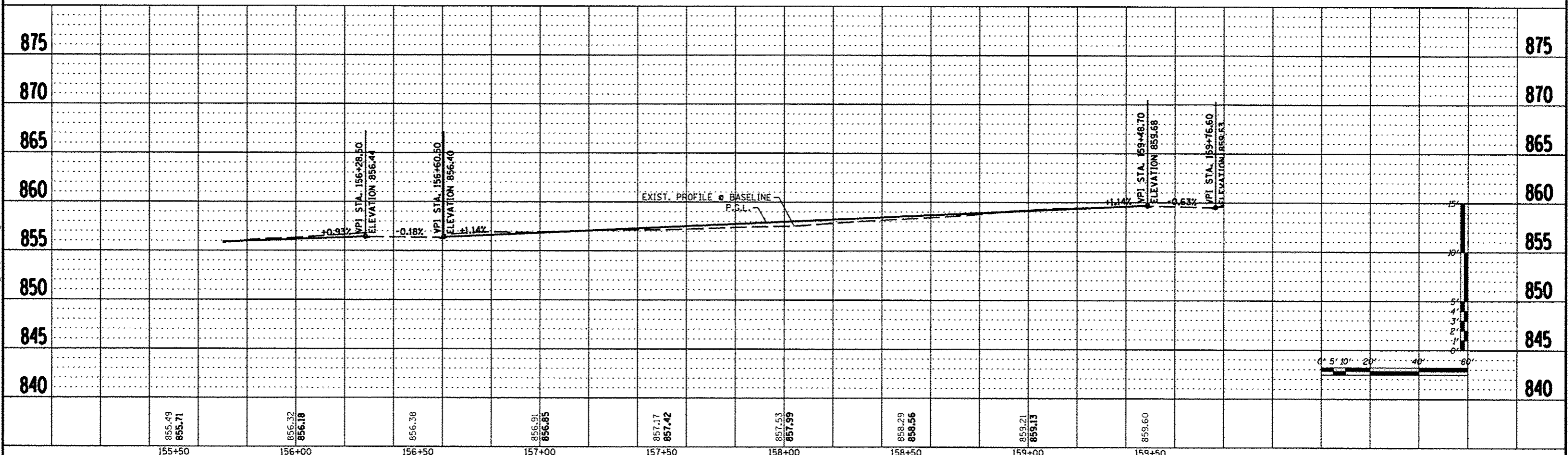


BENCH MARK: #3
 DESC. STAINLESS STEEL ROD IN PVC HANDHOLE
 LOCATED 85' EAST OF EOP TRAINER ROAD,
 46' NORTH OF EOP E. STATE ST.
 SOUTH OF TARGET PARKING LOT.
 ELEV. 872.45



PROPERTY OWNER:
 RICHARD PERNO

PROP. CURVE C40	PROP. CURVE C41
PI STA. = 157+97.76	PI STA. = 159+10.48
$\Delta = 24^\circ 53' 18''$ (RT)	$\Delta = 32^\circ 52' 06''$ (RT)
D = 24' 54' 40"	D = 26' 50' 38"
R = 230.00'	R = 213.44'
T = 50.75'	T = 62.96'
L = 99.91'	L = 122.44'
E = 5.53'	E = 9.09'
$\theta =$ -----	$\theta =$ -----
T.R. = -----	T.R. = -----
S.E. RUN = -----	S.E. RUN = -----
P.C. STA = 157+47.00	P.C. STA = 158+47.52
P.T. STA = 158+46.91	P.T. STA = 159+69.96



FILE: S:\PROJECTS\2008\1139001\Phase1\GDS\10\17A\guspsheet.dgn

REVISION	DATE	BY	REMARKS
*1	03/22/13	TJA	100% COMMENTS FROM JAN. 28, 2013

WINNEBAGO COUNTY
 VILLAGE OF CHERRY VALLEY
 PERRYVILLE PATH SOUTHEAST CONNECTION



PERRYVILLE PATH
 PLAN & PROFILE
 STA. 155+50.00 - STA. 159+60.00

SECTION	COUNTY	TOTAL SHEETS	SHEET NO.
01-00302-00-BT	WINNEBAGO		
STA. 00+00.00 - STA. 172+20.37			
WHA #: 1139001	DATE: 03/01/2013	124	47