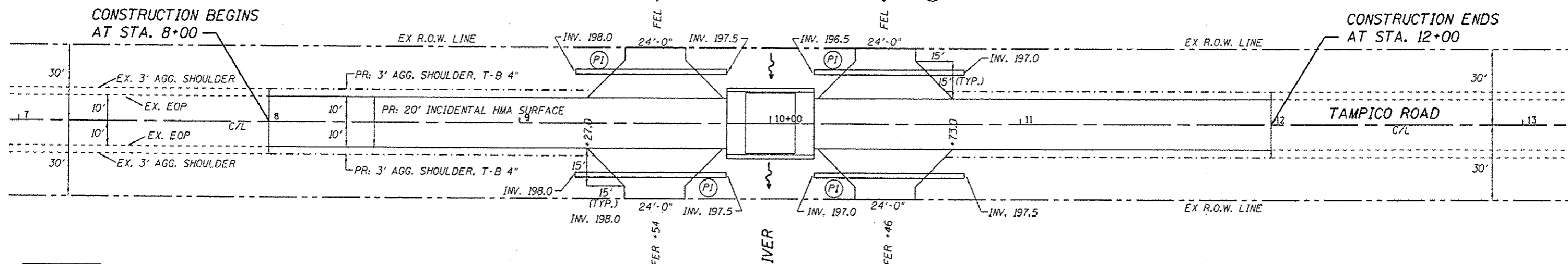


NOTE: FIELD ENTRANCES USE 6" AGGREGATE SURFACE COURSE, TYPE B

BRANCH
GREEN RIVER

(PI) = 60' - 24" DIA. PIPE CULVERT, W/ FLAP GATE (TYP.)



CONSTRUCTION BEGINS AT STA. 8+00

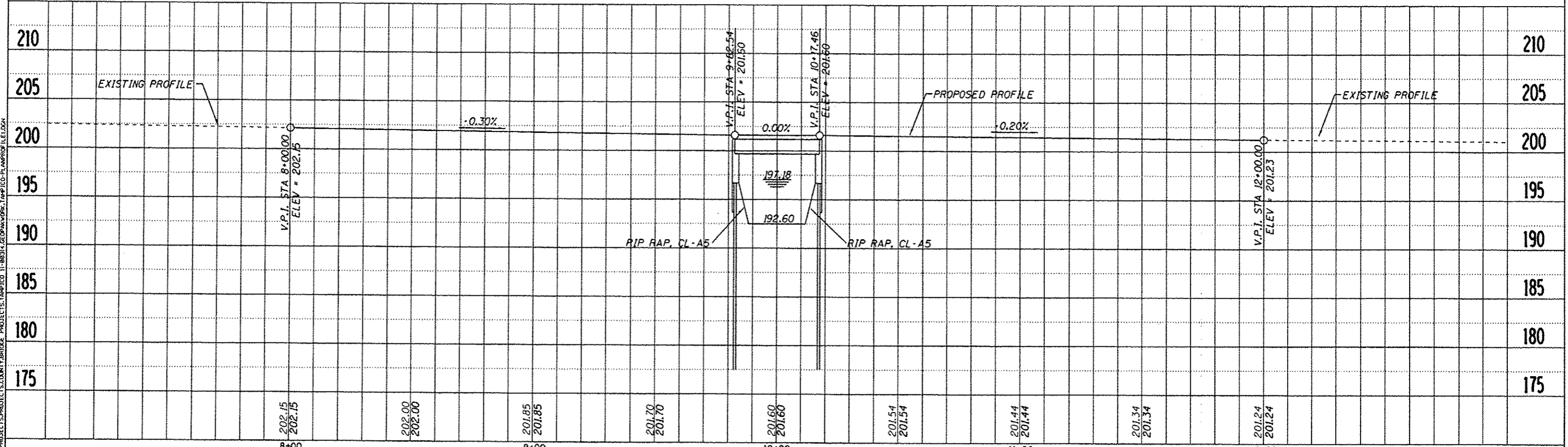
CONSTRUCTION ENDS AT STA. 12+00



NOTE: RE-USE SUITABLE AGGREGATE FROM ROAD CORING ON THE FIELD ENTRANCES

EXISTING STRUCTURE: S.N. 052-3370
A single span (20'-0")

PROPOSED STRUCTURE: S.N. 052-3371
A single span (32'-0") precast prestressed concrete deck beam bridge pile bent piers at Station 20+00.



FILE NAME: L:\PROJECTS\PROJECTS\COUNTY BRIDGE PROJECTS\TAMPICO 11-00314\DESIGN\WORK\TAMPICO-PLAN\PROF\FILE.DWG

DESIGNED -	REVISED -	STATE OF ILLINOIS COUNTY OF LEE	TAMPICO ROAD BRIDGE PLAN & PROFILE SHEET		F.A.S. RTE.	SECTION	COUNTY	TOTAL SHEETS	SHEET NO.
DRAWN -	REVISED -		SCALE: 20 SCALE	SHEET 1 OF 1 SHEETS	195	11-00314-00-BR	LEE	15	3
CHECKED -	REVISED -		STA. 8+00.00 TO STA. 12+00.00			LEE COUNTY HIGHWAY DEPT.		CONTRACT NO. 85583	
DATE -	REVISED -					ILLINOIS		FED. AID PROJECT BRS-0195106	