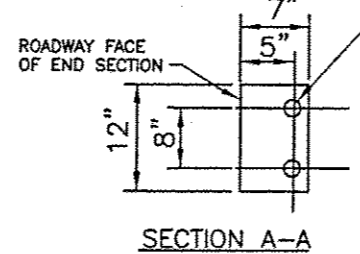


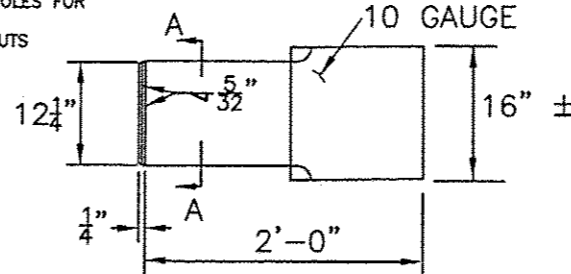
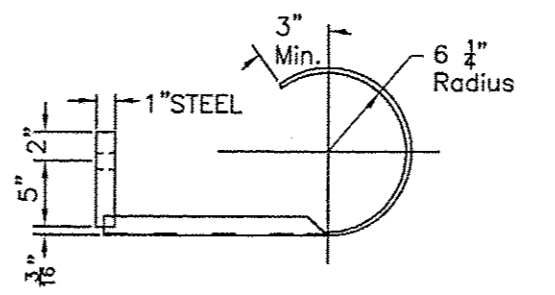
P.G. - Profile Grade
 T.C.E. - Top of Cap Elev. at CenterLine
 B.C.E. - Bottom of Cap Elev.

Extend the Rip Rap upstream and downstream 6 ft from the outside beam edge,

Porous Granl Backfill, CA-6
 Compacted in 8" lifts,
 end to end of wings



CURLED END SECTION DETAIL
 4 REQ'D; GALVANIZED STEEL



WATERWAY INFORMATION

Drainage Area= 2.22 SM Low Grade Elev.= 201.3 @ Sta. 12+00

Flood	Freq. Yr.	Q CFS	Opening SF		Nat. H.W.E.	Head - Ft.		Headwater El	
			Exist	Prop		Exist	Prop	Exist	Prop
Design	20	142	140	200	197.41	0.0	0.0	197.19	197.55
Base	100	192	140	200	197.89	0.0	0.0	197.67	197.62

PILE DATA INFORMATION

TYPE AND SIZE: METAL SHELL 12" DIA, X 0.25" WALLS
 NOMINAL REQUIRED BEARING 210 KIPS
 ALLOWABLE RESISTANCE AVAILABLE
 WEST ABUTMENT: FIVE AT 70 KIPS EA.
 EAST ABUTMENT: FOUR PLUS ONE TEST PILE AT 70 KIPS EA.
 QTY REQUIRED: 9 + 1 TEST PILE
 ESTIMATED PILE LENGTH:
 WEST ABUTMENT: 40 FT. EACH
 EAST ABUTMENT: 40 FT. EACH
 MINIMUM PENETRATION: 10 FT BELOW STREAMBED
 METAL SHELL PILES SHALL BE ACCORDING TO ASTM A252 GRADE 3
 THE TEST PILES SHALL BE DRIVEN TO 110 PERCENT OF THE NOMINAL REQUIRED BEARING INDICATED IN THE PILE DATA INFORMATION

DESIGN SPECIFICATIONS

2012 AASHTO LRFD Bridge Design Specifications and all applicable interims.

LOADING HL-93

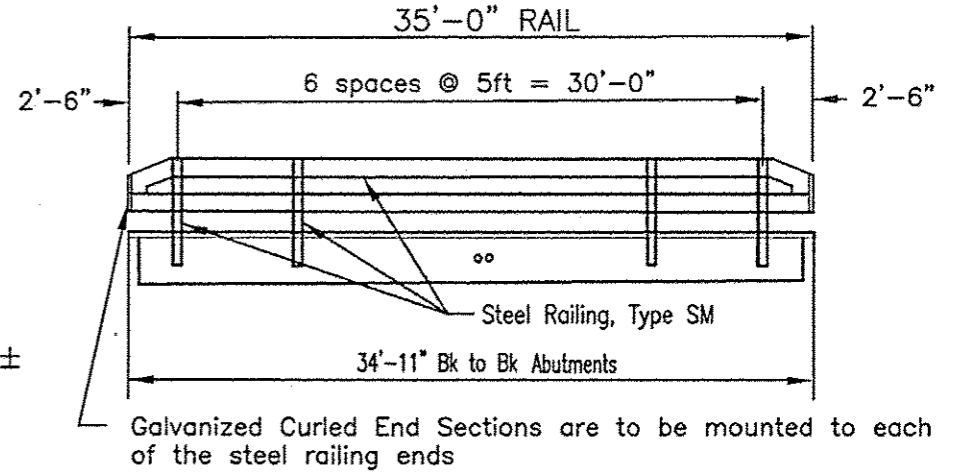
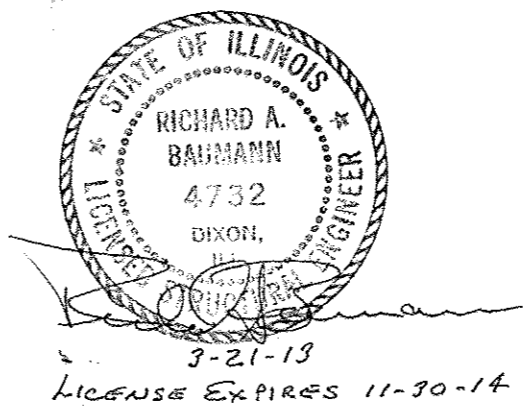
Allow 50#/sq. ft. for future wearing surface.

SEISMIC DATA

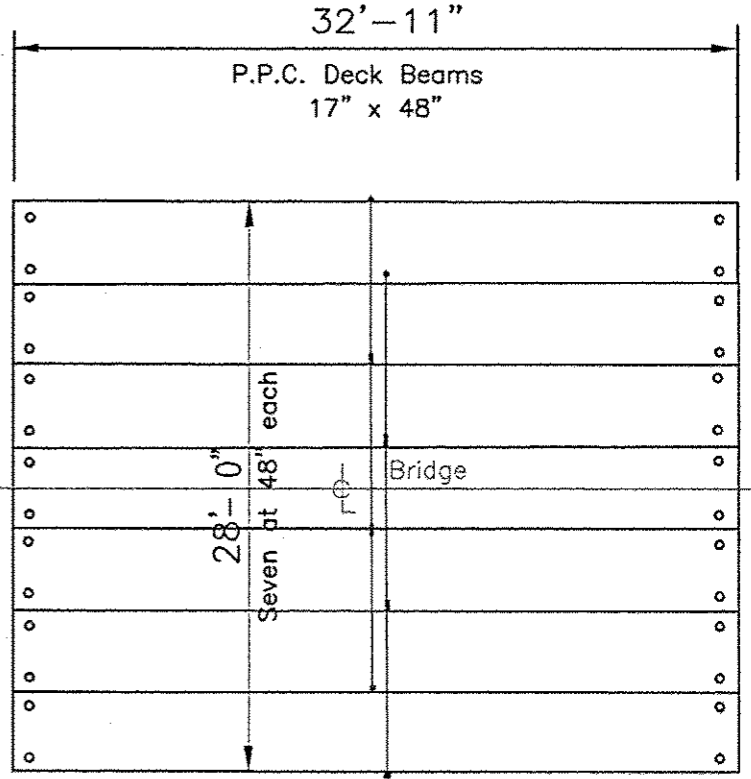
Seismic Performance Zone (SPZ) = 1
 Design Spectral Acceleration at 1.0 se (Sp1) = 0.09g
 Design Spectral Acceleration at 0.2 (Sps) = 0.149g
 Soil Class = D

DESIGN STRESSES

FIELD UNITS
 f'c = 3,500 psi
 fy = 60,000 psi (Reinforcement)
 PRECAST PRESTRESSED UNITS
 f'c = 60,000 psi
 f'ci = 5,000 psi
 fpu = 270,000 psi (1/2" dia. Low Lax Strands)
 fpbt = 201,960 psi (1/2" dia. Low Lax Strands)



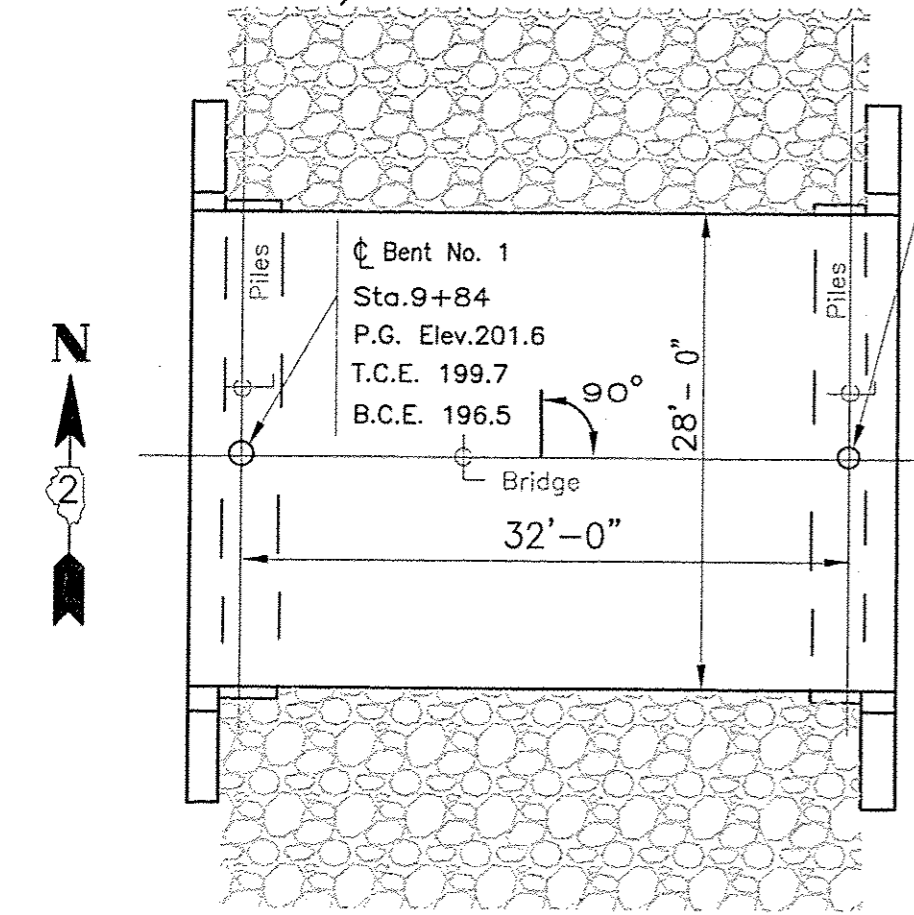
RAIL ELEVATION



BEAM DRAIN HOLES SHALL BE FULLY OPEN PRIOR TO DELIVERY TO THE SITE.

GENERAL PLAN, ELEV. AND SUPERSTRUCTURE

F.A.S. RTE.	SECTION	COUNTY	TOTAL SHEETS	SHEET NO.
0195	11-00314-00-BR	LEE	15	5
LEE COUNTY HW DEPT.		CONTRACT NO. 85583		
ILLINOIS FED. AID PROJECT BRS-0195(106)				



☉ Bent No. 2
 Sta. 10+16
 P.G. Elev. 201.6
 T.C.E. 199.7
 B.C.E. 196.5

☉ Bent No. 1
 Sta. 9+84
 P.G. Elev. 201.6
 T.C.E. 199.7
 B.C.E. 196.5

