

**INDEX OF SHEETS 06-14-13 LETTING ITEM 109**

- 1 = COVER SHEET
- 2 = SUMMARY OF QUANTITIES & TYPICAL SECTIONS
- 3 = PLAN & PROFILE
- 4 = TRAFFIC CONTROL PLAN
- 5 = GENERAL PLAN, ELEVATION, RAIL & SUPERSTRUCTURE
- 6 = ABUTMENT SECTION AND REINFORCEMENT
- 7 = SUPERSTRUCTURE DETAILS
- 8 = ABUTMENT ELEVATION AND REINFORCEMENT
- 9 = 17" X 48" PPC DECK BEAM
- 10 = 17" X 48" PPC DECK BEAM DETAILS
- 11 = CROSS SECTIONS SHEET #1
- 12 = CROSS SECTIONS SHEET #2
- 13 = CROSS SECTIONS SHEET #3
- 14 = STEEL BRIDGE RAILING, TYPE SM
- 15 = PILE DETAILS

**STANDARDS**

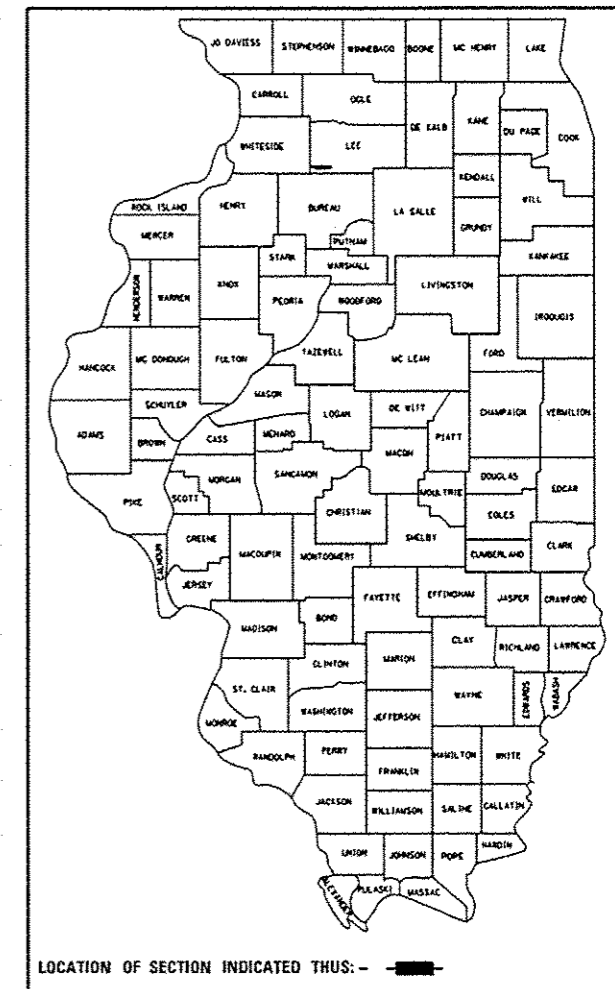
- 000001-06 STANDARD SYMBOLS, ABBREVIATIONS, AND PATTERNS
- 280001-07 TEMPORARY EROSION CONTROL SYSTEMS
- 515001-03 NAME PLATE FOR BRIDGES
- 701006-04 OFF-RD OPERATIONS, 2L, 2W, 15' (4.5m) TO 24" (600 mm) FROM PAVEMENT EDGE
- 701301-04 LANE CLOSURE, 2L, 2W, SHORT TIME OPERATIONS
- 701901-02 TRAFFIC CONTROL DEVICES
- 728001-01 TELESCOPING STEEL SIGN SUPPORT
- 729001-01 APPLICATIONS OF TYPE A & B METAL POSTS (FOR SIGNS & MARKERS)
- B.L.R. 21-9 TYPICAL APPLICATION OF TRAFFIC CONTROL DEVICES FOR CONSTRUCTION ON RURAL LOCAL HIGHWAYS
- B.L.R. 22-7 TRAFFIC CONTROL 2 LAND ROAD CLOSED

"I certify that to the best of my knowledge, information and belief, that this bridge design is structurally adequate for the design loading shown on the plans. The design is an economical one for the style of structure and complies with requirements of the current AASHTO Standard Specifications for Highway Bridges."

**STATE OF ILLINOIS  
DEPARTMENT OF TRANSPORTATION  
DIVISION OF HIGHWAYS**

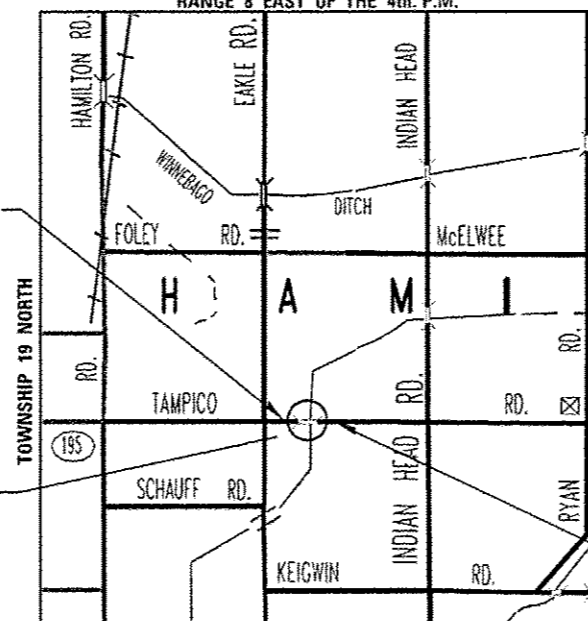
**PLANS FOR PROPOSED  
FEDERAL AID PROJECT  
HIGHWAY BRIDGE PROGRAM**

**LEE COUNTY  
FAS 195 (TAMPICO ROAD)  
SECTION 11-00314-00-BR  
PROJECT BRS-0195(106)  
STRUCTURE REPLACEMENT  
C-92-103-12**



LOCATION MAP

RANGE 8 EAST OF THE 4th. P.M.



CONSTRUCTION BEGINS  
STATION 8+00

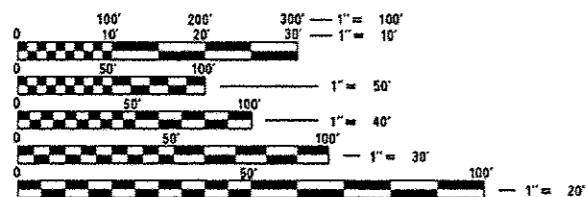


CONSTRUCTION ENDS  
STATION 12+00

GROSS LENGTH = 400 FT. = 0.075 MILE  
NET LENGTH = 400 FT. = 0.075 MILE

**UTILITIES:**  
FRONTIER COMMUNICATIONS  
111 S. Main Street  
Kewanee, IL 61443  
815-895-1532  
Attn: Terry Spurgeon

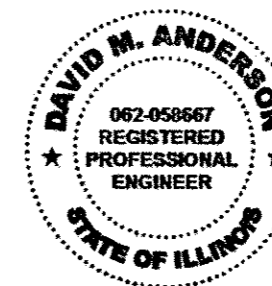
PROPOSED STRUCTURE: S.N. 052-3371  
A SINGLE SPAN PPC DECK BEAM BRIDGE  
ON PILE BENT ABUTMENTS  
(REPLACES STRUCTURES 052-3370)



FULL SIZE PLANS HAVE BEEN PREPARED USING STANDARD ENGINEERING SCALES. REDUCED SIZED PLANS WILL NOT CONFORM TO STANDARD SCALES. IN MAKING MEASUREMENTS ON REDUCED PLANS, THE ABOVE SCALES MAY BE USED.

J.U.L.I.E.  
JOINT UTILITY LOCATION INFORMATION FOR EXCAVATION  
1-800-892-0123  
OR 811

**CONTRACT NO. 85583**



ENGINEER'S SEAL  
*David M. Anderson*  
DATE: 04/02/2013  
EXPIRES 11/30/2013

LEE COUNTY HIGHWAY DEPARTMENT	
APPROVED	APRIL 2 2013 <i>David M. Anderson</i> LEE COUNTY ENGINEER
PASSED	APR 12 2013 <i>Paul A. Coates</i> DISTRICT 2 PROJECT IMPLEMENTATION ENGINEER
RELEASING FOR BID BASED ON LIMITED REVIEW	APR 12 2013 <i>Paul A. Coates</i> DEPUTY DIRECTOR OF HIGHWAYS, REGION 3 ENGINEER

F.A.S. RTE.	SECTION	COUNTY	TOTAL SHEETS	SHEET NO.
0195	11-00314-00-BR	LEE	15	1
LEE COUNTY HW DEP'T.			CONTRACT NO. 85583	
ILLINOIS FED. AID PROJECT BRS-0195(106)				

FILE - L:\PROJECTS\PROJECTS\COUNTY BRIDGE PROJECTS\TAMPICO 11-00314-00-BR\WORK\TAMPICO0195SHEET.DGN

**SUMMARY OF QUANTITIES**

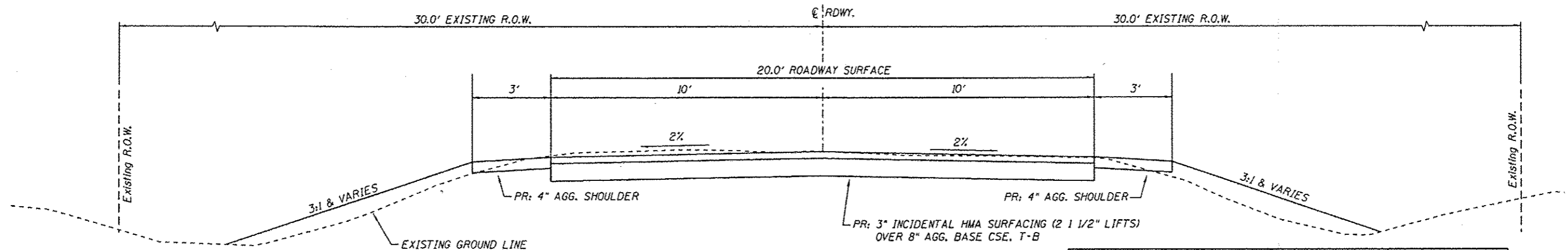
CONSTRUCTION TYPE CODE: 0011

PAY CODE	DESCRIPTION	UNIT	QUANTITY
20300100	CHANNEL EXCAVATION	CU. YD.	40.0
20400800	FURNISHED EXCAVATION	CU. YD.	10.0
20900110	POROUS GRANULAR BACKFILL	CU. YD.	40.0
25100630	EROSION CONTROL BLANKET	SQ. YD.	2,400.0
28100709	STONE DUMPED, RIP RAP, CLASS A-5	SO. YD.	200.0
28200200	FILTER FABRIC	SO. YD.	200.0
35101400	AGGREGATE BASE COURSE, TYPE B	TON	440.0
40200800	AGGREGATE SURFACE COURSE, TYPE B	TON	80.0
40600100	BITUMINOUS MATERIALS (PRIME COAT)	GALLON	360.0
40800050	INCIDENTAL HOT-MIX ASPHALT SURFACING	TON	190.0
48101200	AGGREGATE SHOULDERS, TYPE B	TON	105.0
50100100	REMOVAL OF EXISTING STRUCTURE	EACH	1.0
50300225	CONCRETE STRUCTURES	CU. YD.	27.8
50300260	BRIDGE DECK GROOVING	SO. YD.	101.0
50300300	PROTECTIVE COAT	SO. YD.	122.0
50400305	PRECAST PRESTRESSED CONCRETE DECK BEAMS (17" DEPTH)	SQ. FT.	922.0
50800205	REINFORCEMENT BARS, EPOXY COATED	POUND	5,455.6
Δ 50901050	STEEL RAILING, TYPE SM	FOOT	70.0
51200957	FURNISHING METAL SHELL PILES, 12" X 0.250"	FOOT	360.0
51202305	DRIVING PILES	FOOT	360.0
51203200	TEST PILE METAL SHELLS	EACH	1.0
51500100	NAME PLATES	EACH	1.0
54200229	PIPE CULVERTS, CLASS C, TYPE 1 24"	FOOT	240.0
67100100	MOBILIZATION	L SUM	1.0
X2020410	EARTH EXCAVATION (SPECIAL)	CU. YD.	340.0
•X2501000	SEEDING CLASS 2 (SPECIAL)	ACRES	0.5
•X5030305	CONCRETE WEAR SURFACE, 5"	SO. YD.	109.0
•X6081000	FLAP GATE (SPECIAL)	EACH	4.0
•X7010216	TRAFFIC CONTROL AND PROTECTION, (SPECIAL)	L SUM	1.0

•SEE THE CONTRACT DOCUMENTS FOR SPECIAL PROVISIONS

Δ SPECIALTY ITEMS

**TYPICAL SECTION**



**PROPOSED ROADWAY TYPICAL SECTION**

Sta. 8+00.00 - 9+82.54  
Sta. 10+17.46 - 12+00.00

**PAVEMENT STRUCTURAL DESIGN - TAMPICO ROAD**

Structural Design Traffic (S.D.T.) • Year 2023  
Class IV Street  
80,000# Truck Design  
E<sub>RI</sub> : (Assumed) 2 ksi  
HCV = 7

P.V. 90  
S.U. 10  
M.U. 5 } 105 ADT

USE  
3" - Incidental Hot-Mix Asphalt Surfacing (2 - 1/2" Lifts)  
8" - Aggregate Base Course, Type B

MIXTURE USE(S):	SURFACE
	BINDER
PG:	PG 64-22
DESIGN AIR VOIDS	3.0 @ N50
MIXTURE COMPOSITION	IL 9.5 OR 9.5F6
FRICTION AGGREGATE	C
20 YEAR ESAL	0.0
MIX UNIT WEIGHT	112 LB / SY / IN

DESIGNED -	REVISED -
DRAWN -	REVISED -
CHECKED -	REVISED -
DATE -	REVISED -

STATE OF ILLINOIS  
COUNTY OF LEE

**TAMPICO ROAD BRIDGE  
SUMMARY OF QUANTITIES & TYPICAL SECTIONS**

SCALE: 5 SCALE SHEET 1 OF 1 SHEETS STA. 8+00.00 TO STA. 12+00.00

F.A.S. RTE.	SECTION	COUNTY	TOTAL SHEETS	SHEET NO.
195	11-00314-00-BR	LEE	15	2
LEE COUNTY HIGHWAY DEPT.			CONTRACT NO. 85583	
ILLINOIS			FED. AID PROJECT 845-01951061	

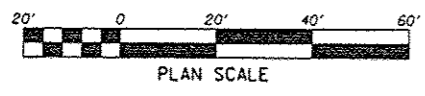
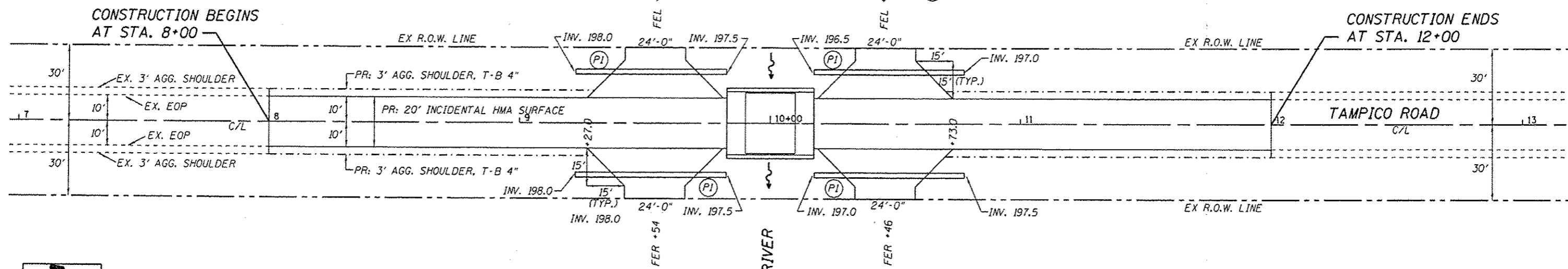
FILE NAME: I:\PROJECTS\PROJECTS\COUNTY\BRIDGE PROJECTS\TAMPICO 11-00314\2023\WORK\TAMPICO-SUMMARY OF QUANTITIES-TYPICAL SECTION

NOTE: FIELD ENTRANCES USE 6" AGGREGATE SURFACE COURSE, TYPE B

BRANCH

GREEN RIVER

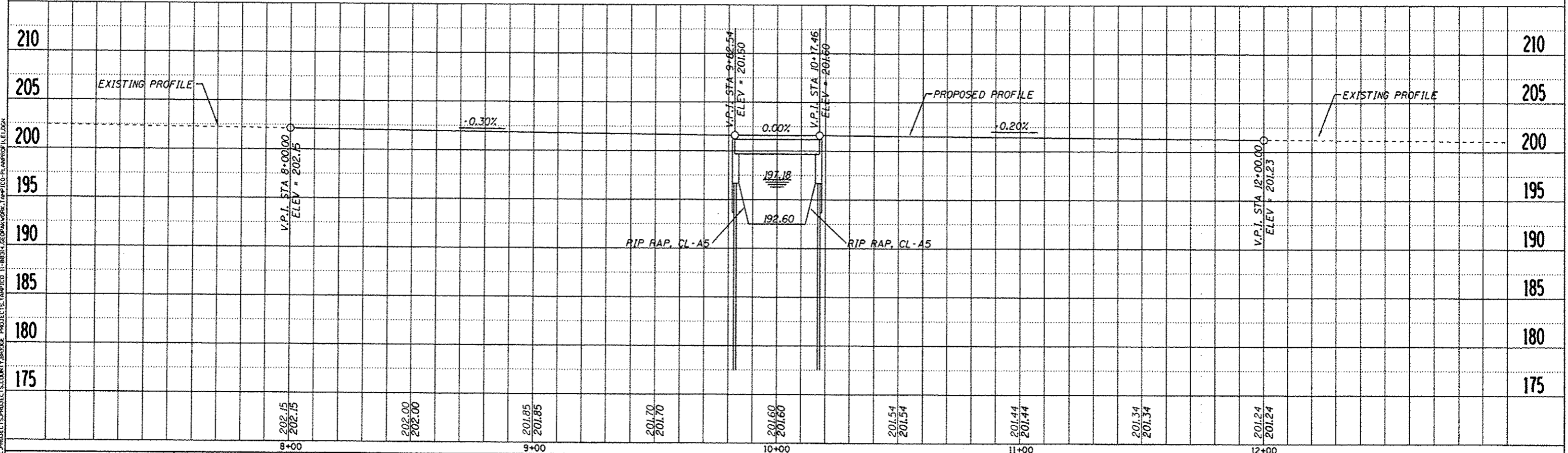
(PI) = 60' - 24" DIA. PIPE CULVERT, W/ FLAP GATE (TYP.)



NOTE: RE-USE SUITABLE AGGREGATE FROM ROAD CORING ON THE FIELD ENTRANCES

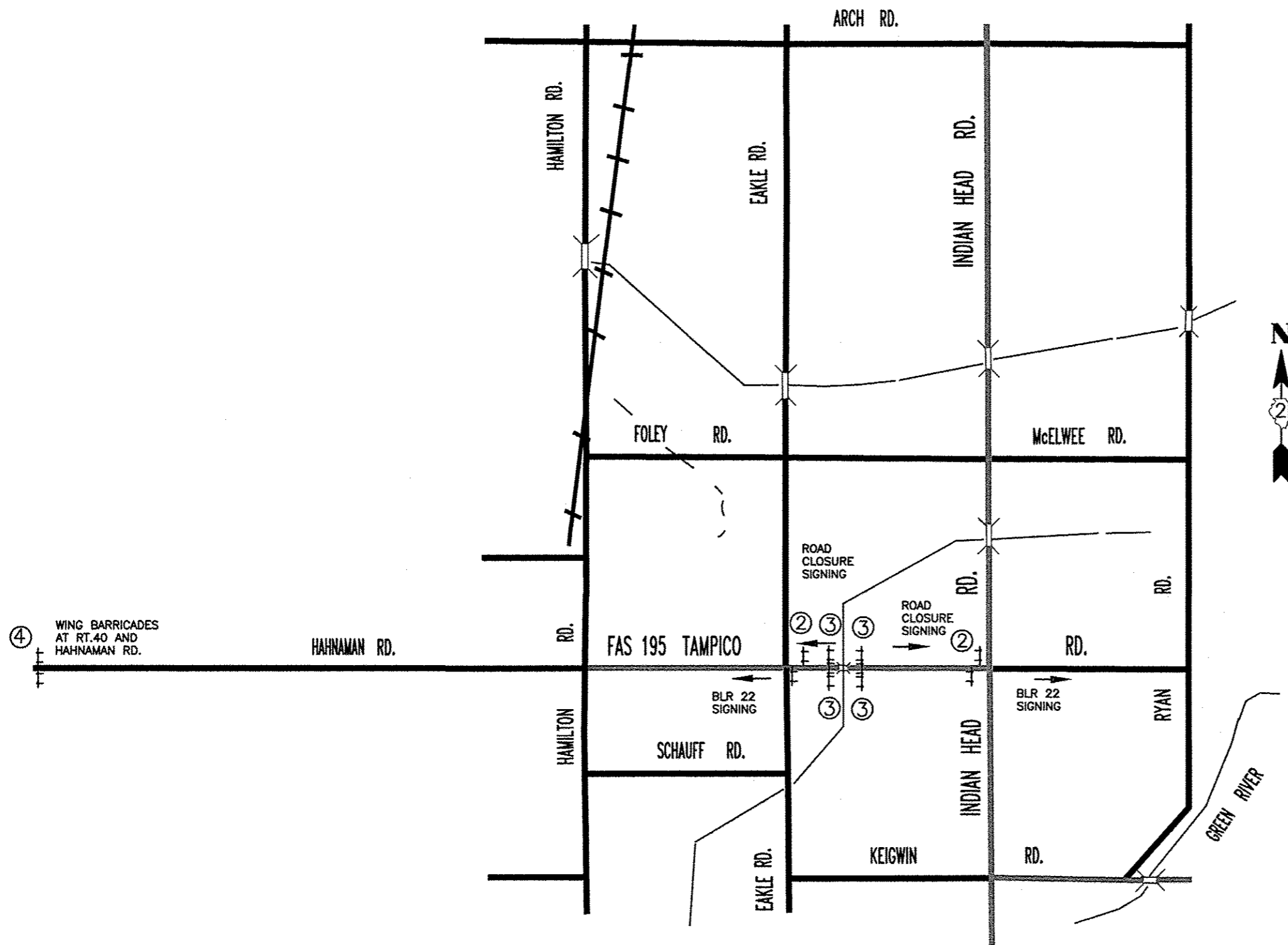
EXISTING STRUCTURE: S.N. 052-3370  
A single span (20'-0")

PROPOSED STRUCTURE: S.N. 052-3371  
A single span (32'-0") precast prestressed concrete deck beam bridge pile bent piers at Station 20+00.



FILE NAME: L:\PROJECTS\PROJECTS\COUNTY BRIDGE PROJECTS\TAMPICO 11-00314\DESIGN\WORK\TAMPICO-PLAN\PROF\FILE.DWG

DESIGNED -	REVISED -	STATE OF ILLINOIS COUNTY OF LEE	TAMPICO ROAD BRIDGE PLAN & PROFILE SHEET		F.A.S. RTE.	SECTION	COUNTY	TOTAL SHEETS	SHEET NO.
DRAWN -	REVISED -		SCALE: 20 SCALE	SHEET 1 OF 1 SHEETS	195	11-00314-00-BR	LEE	15	3
CHECKED -	REVISED -		STA. 8+00.00	TO STA. 12+00.00	LEE COUNTY HIGHWAY DEPT.		CONTRACT NO. 85583		
DATE -	REVISED -				ILLINOIS		FED. AID PROJECT BRS-0195106		



PLAN

- ② ROAD CLOSED TO THRU TRAFFIC

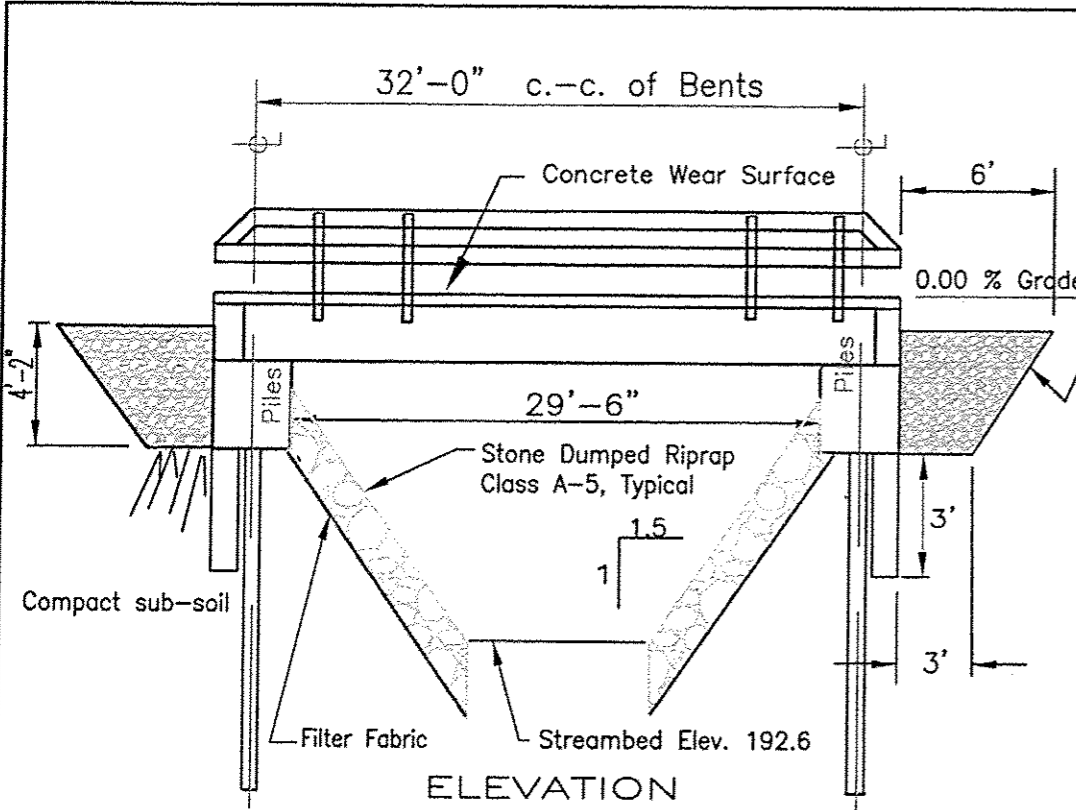
R11-3-6030
- ③ ROAD CLOSED

R11-2-4830
- ④ ROAD CLOSED 4 MILES AHEAD LOCAL TRAFFIC ONLY

R11-3-6030

ROAD CLOSURE PLAN

F.A.S. RTE.	SECTION	COUNTY	TOTAL SHEETS	SHEET NO.
0195	11-00314-00-BR	LEE	15	4
LEE COUNTY HW DEP'T.			CONTRACT NO. 85583	
ILLINOIS FED. AID PROJECT BRS-0195(106)				

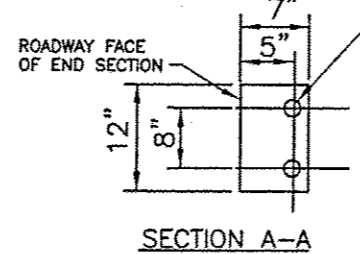


**ELEVATION**

P.G. - Profile Grade  
T.C.E. - Top of Cap Elev. at CenterLine  
B.C.E. - Bottom of Cap Elev.

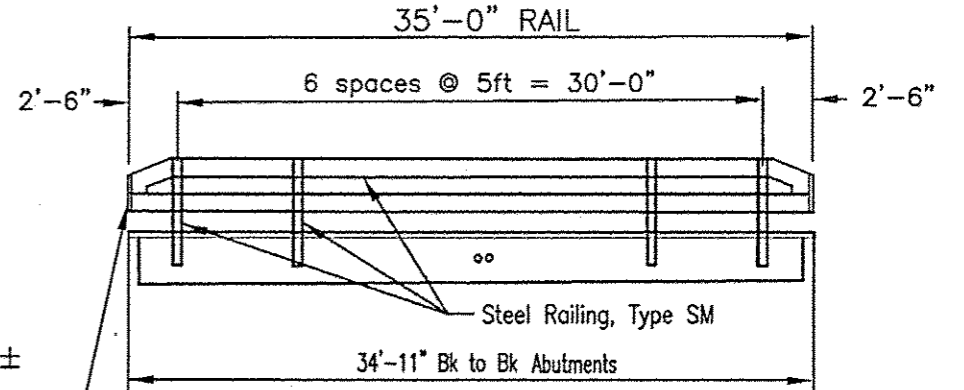
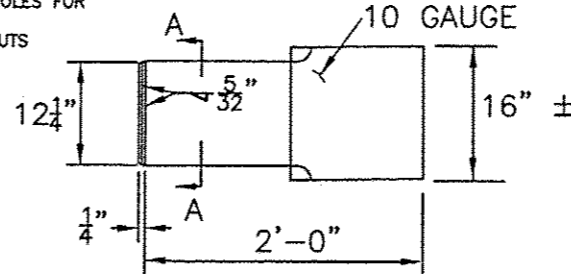
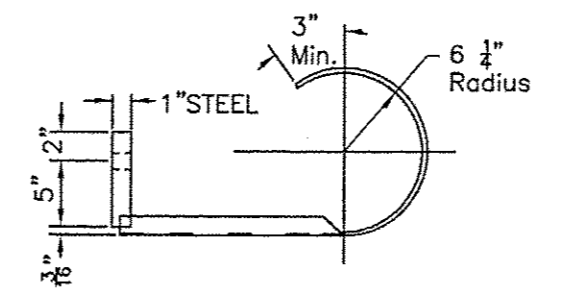
Extend the Rip Rap upstream and downstream 6 ft from the outside beam edge,

Porous Granl Backfill, CA-6  
Compacted in 8" lifts,  
end to end of wings



**SECTION A-A**

**CURLED END SECTION DETAIL**  
4 REQ'D; GALVANIZED STEEL



**RAIL ELEVATION**

Galvanized Curled End Sections are to be mounted to each of the steel railing ends

**WATERWAY INFORMATION**

Drainage Area= 2.22 SM Low Grade Elev.= 201.3 @ Sta. 12+00

Flood	Freq. Yr.	Q CFS	Opening SF		Nat. H.W.E.	Head - Ft.		Headwater El	
			Exist	Prop		Exist	Prop	Exist	Prop
Design	20	142	140	200	197.41	0.0	0.0	197.19	197.55
Base	100	192	140	200	197.89	0.0	0.0	197.67	197.62

**PILE DATA INFORMATION**

TYPE AND SIZE: METAL SHELL 12" DIA, X 0.25" WALLS  
NOMINAL REQUIRED BEARING 210 KIPS  
ALLOWABLE RESISTANCE AVAILABLE  
WEST ABUTMENT: FIVE AT 70 KIPS EA.  
EAST ABUTMENT: FOUR PLUS ONE TEST PILE AT 70 KIPS EA.  
QTY REQUIRED: 9 + 1 TEST PILE  
ESTIMATED PILE LENGTH:  
WEST ABUTMENT: 40 FT. EACH  
EAST ABUTMENT: 40 FT. EACH  
MINIMUM PENETRATION: 10 FT BELOW STREAMBED  
METAL SHELL PILES SHALL BE ACCORDING TO ASTM A252 GRADE 3  
THE TEST PILES SHALL BE DRIVEN TO 110 PERCENT OF THE NOMINAL REQUIRED BEARING INDICATED IN THE PILE DATA INFORMATION

**DESIGN SPECIFICATIONS**

2012 AASHTO LRFD Bridge Design Specifications and all applicable interims.

**LOADING HL-93**

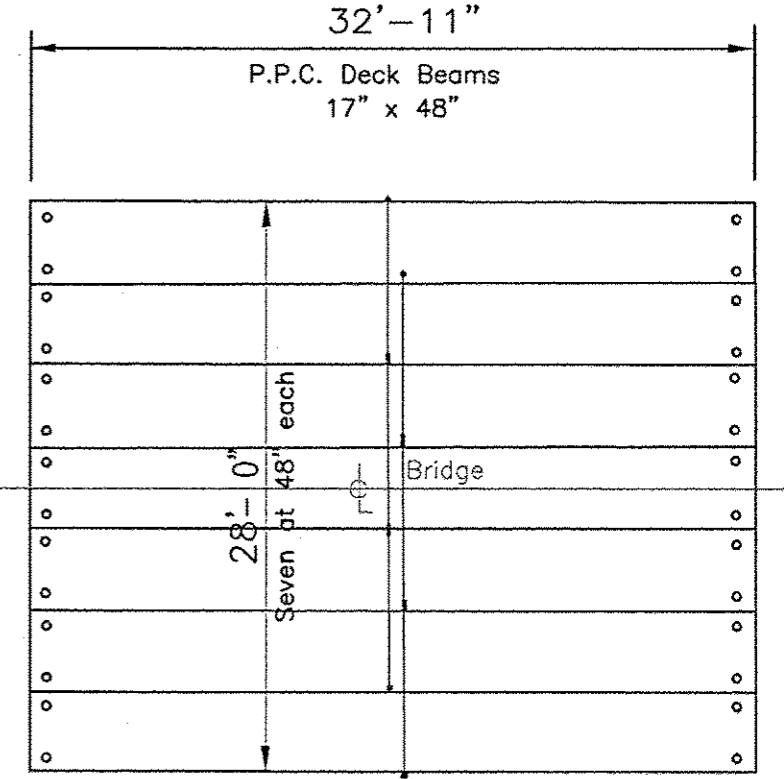
Allow 50#/sq. ft. for future wearing surface.

**SEISMIC DATA**

Seismic Performance Zone (SPZ) = 1  
Design Spectral Acceleration at 1.0 se (Sp1) = 0.09g  
Design Spectral Acceleration at 0.2 (Sps) = 0.149g  
Soil Class = D

**DESIGN STRESSES**

FIELD UNITS  
f'c = 3,500 psi  
fy = 60,000 psi (Reinforcement)  
PRECAST PRESTRESSED UNITS  
f'c = 60,000 psi  
f'ci = 5,000 psi  
fpu = 270,000 psi (1/2" dia. Low Lax Strands)  
fpbt = 201,960 psi (1/2" dia. Low Lax Strands)

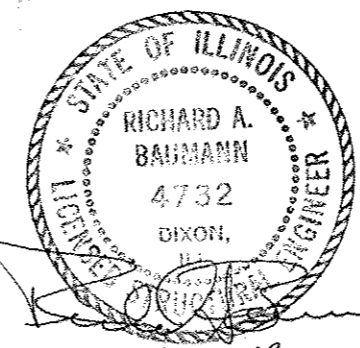


**BEAM PLAN**

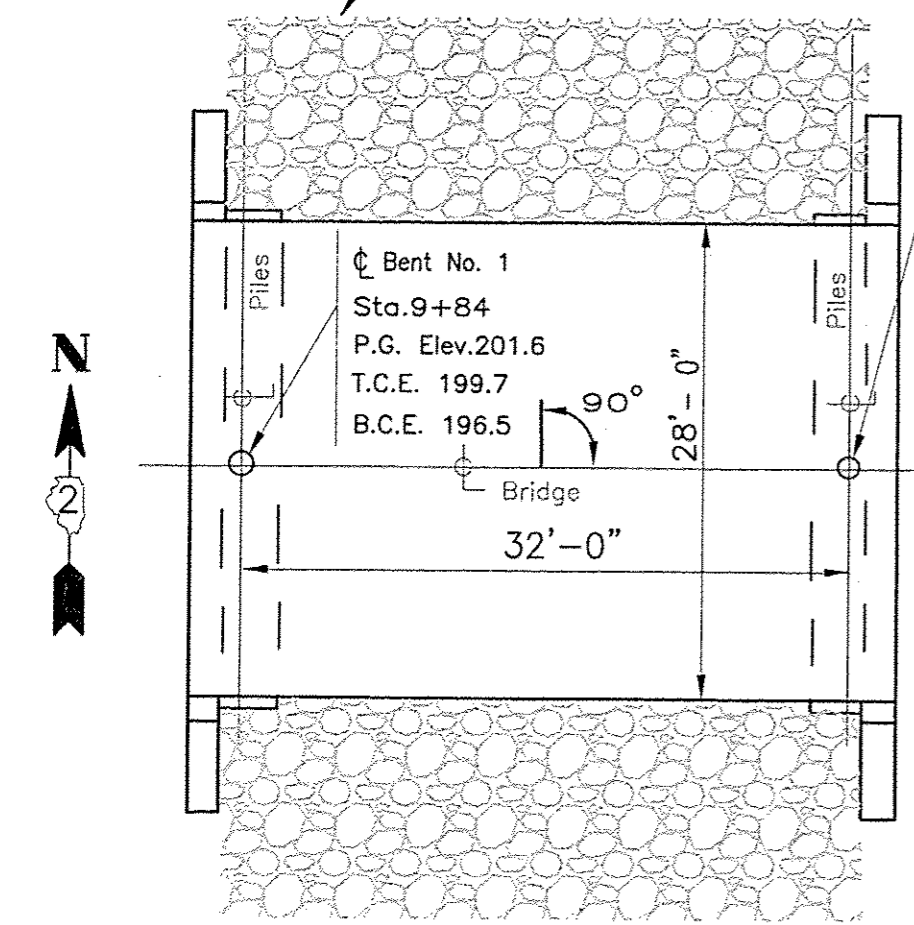
BEAM DRAIN HOLES SHALL BE FULLY OPEN PRIOR TO DELIVERY TO THE SITE.

**GENERAL PLAN, ELEV. AND SUPERSTRUCTURE**

F.A.S. RTE.	SECTION	COUNTY	TOTAL SHEETS	SHEET NO.
0195	11-00314-00-BR	LEE	15	5
LEE COUNTY HW DEPT.		CONTRACT NO. 85583		
ILLINOIS FED. AID PROJECT BRS-0195(106)				

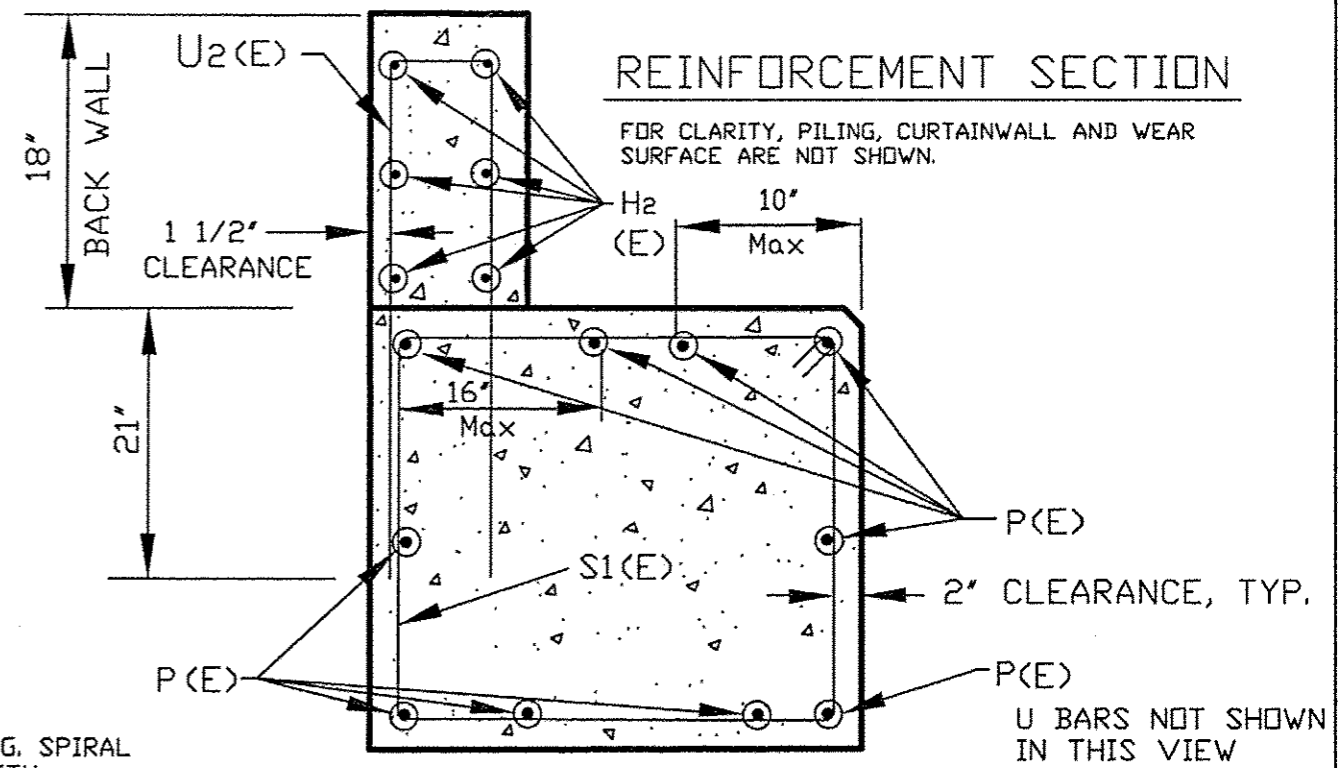
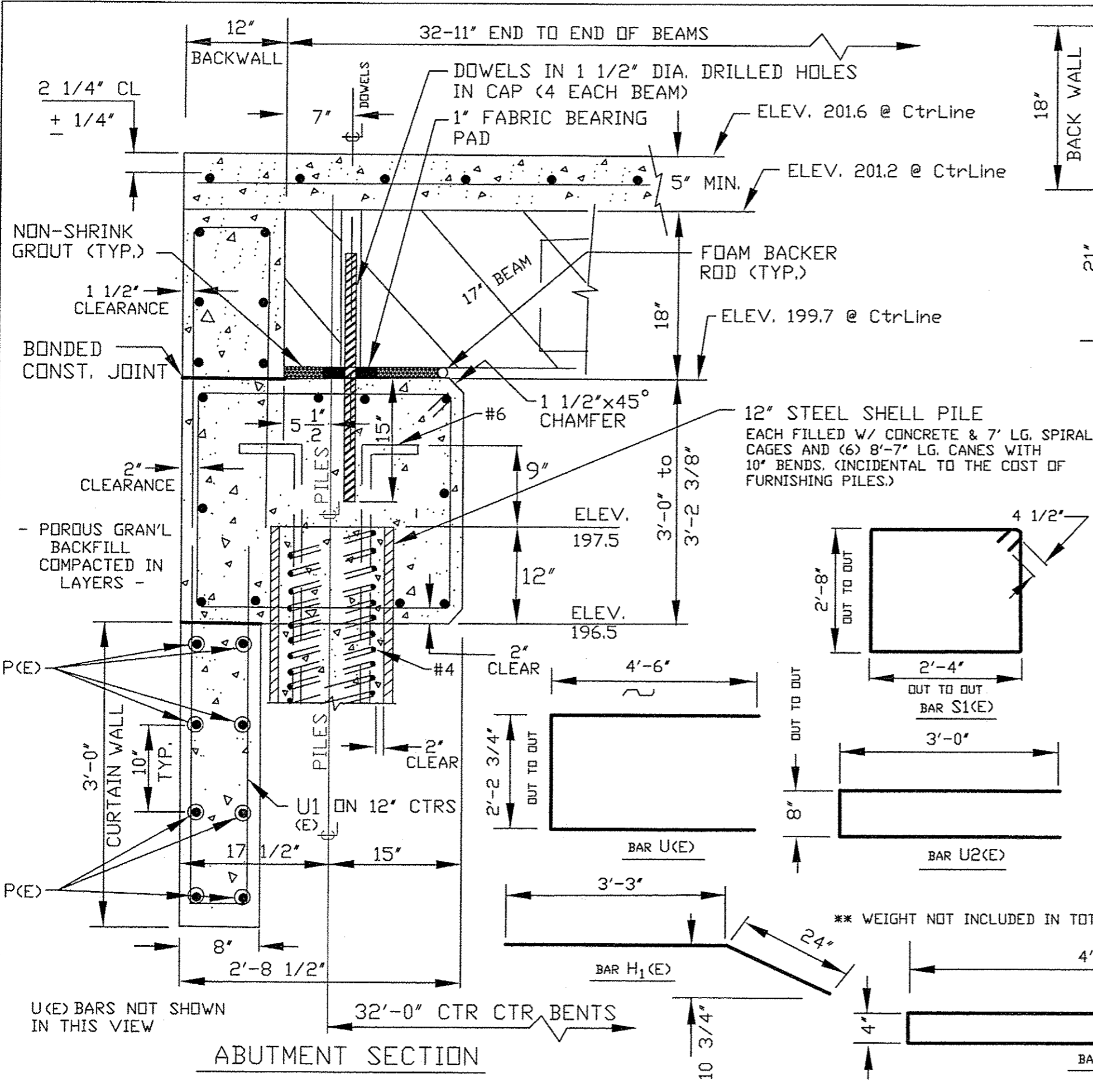


3-21-13  
LICENSE EXPIRES 11-30-14



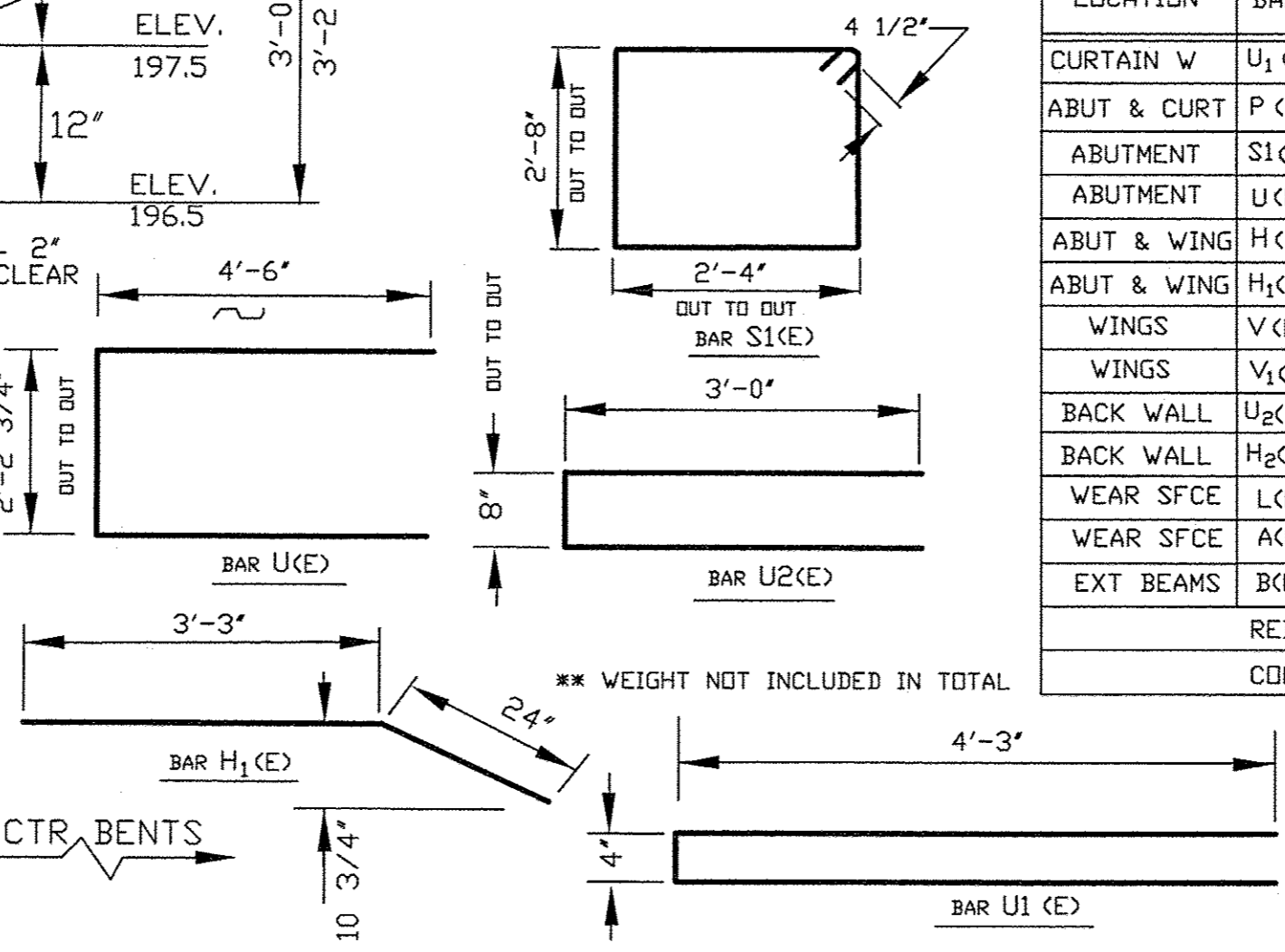
**PLAN**





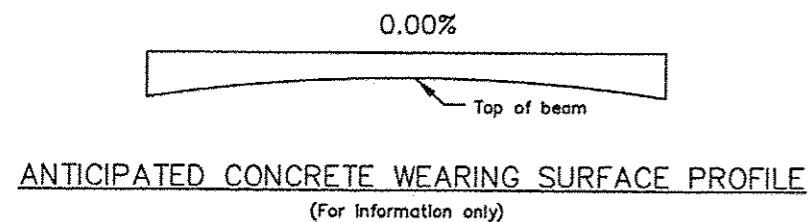
BILL OF MATERIALS FOR TWO ABUTMENTS:

LOCATION	BAR	QTY	SIZE	LENGTH	SHAPE	WEIGHT
CURTAIN W	U <sub>1</sub> (E)	60	#5	8'-10"	—	552.6
ABUT & CURT	P(E)	36	#7	28'-9"	—	2115.6
ABUTMENT	S <sub>1</sub> (E)	60	#4	10'-9"	□	430.8
ABUTMENT	U(E)	16	#6	11'-2 3/4"	—	269.8
ABUT & WING	H(E)	40	#4	5'-0"	—	133.6
ABUT & WING	H <sub>1</sub> (E)	8	#4	5'-3"	—	28.0
WINGS	V(E)	16	#4	2'-8"	—	28.4
WINGS	V <sub>1</sub> (E)	16	#4	3'-8"	—	39.2
BACK WALL	U <sub>2</sub> (E)	60	#4	6'-8"	—	267.4
BACK WALL	H <sub>2</sub> (E)	12	#4	28'-9"	—	230.5
WEAR SFCE	L(E)	29	#4	34'-6"	—	668.3
WEAR SFCE	A(E)	36	#4	28'-9"	—	691.4
EXT BEAMS	B(E)	28	#4	3'-1"	see detail	57.7**
REINFORCEMENT BARS				5455.6 LBS.		
CONCRETE STRUCTURES				27.8 CU. YD.		



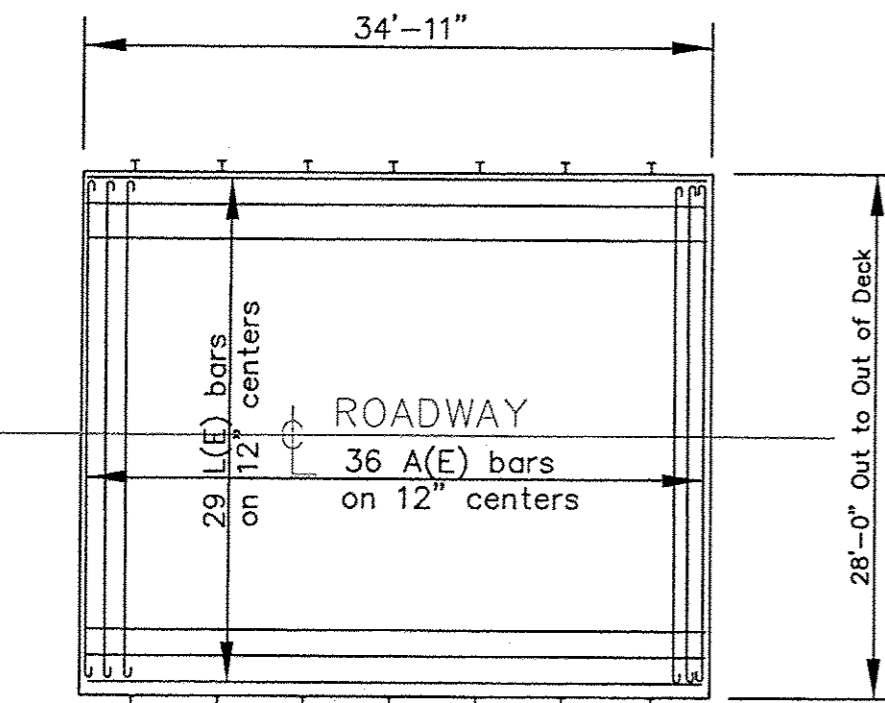
ABUTMENT DETAILS & REINFORCEMENT

F.A.S. RTE.	SECTION	COUNTY	TOTAL SHEETS	SHEET NO.
0195	11-00314-00-BR	LEE	15	6
LEE COUNTY HW DEP'T.		CONTRACT NO. 85583		
ILLINOIS FED. AID PROJECT BRS-0195(106)				

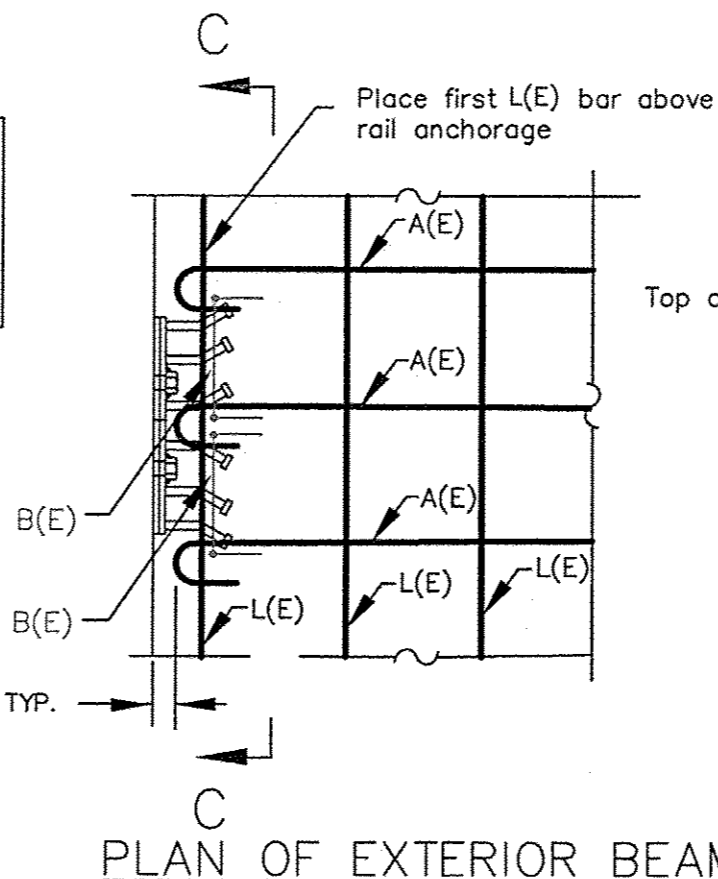


CO. HWY 12, FAS 195  
SEC. 11-00314-00-BR  
BUILT 2013  
LEE COUNTY  
LOADING HL-93  
STR. NO. 052-3371

LETTERING FOR NAME PLATE  
(Also see STD 515001-02)

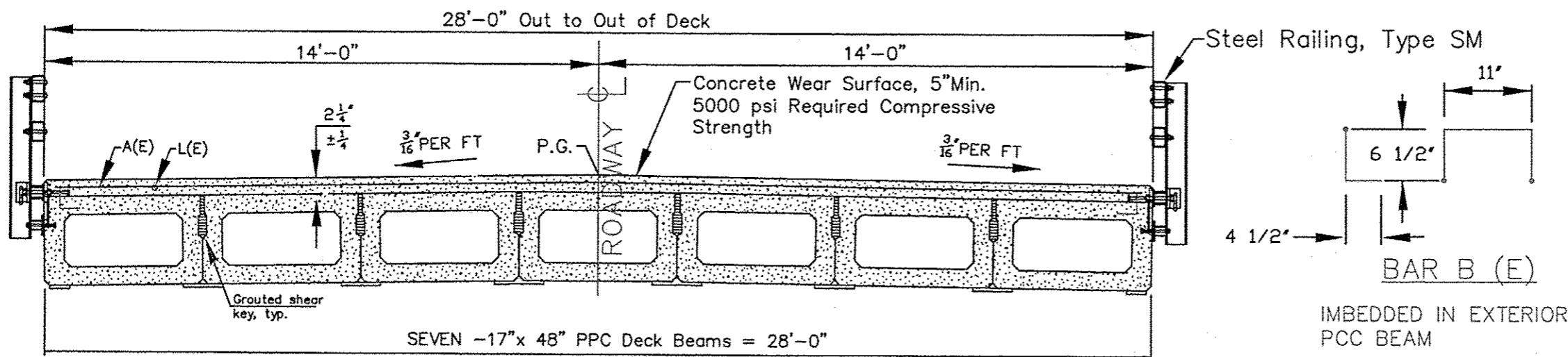
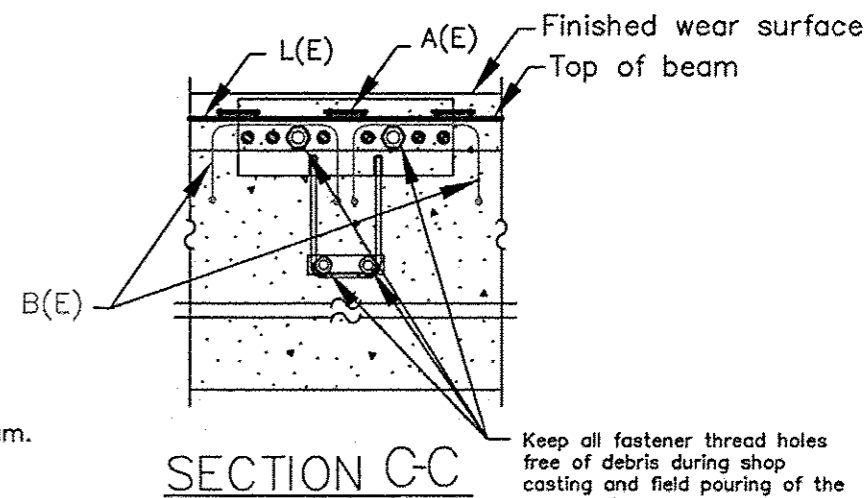
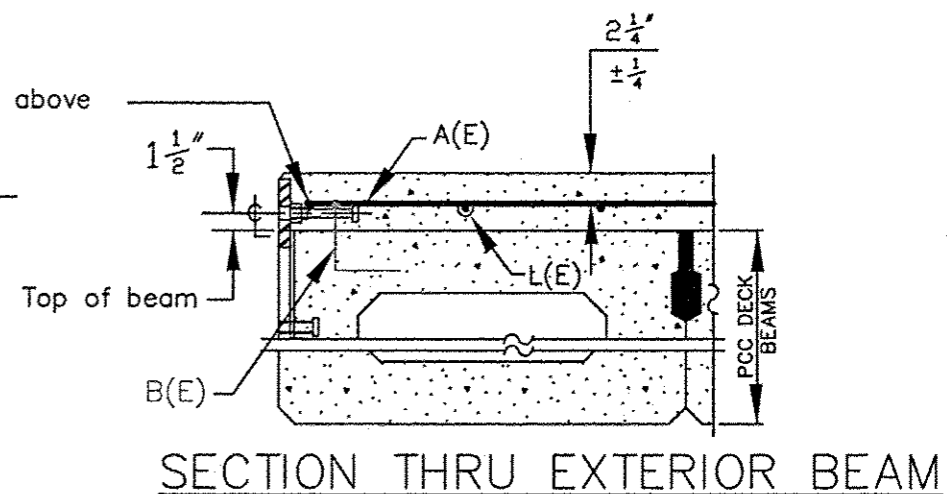


WEAR SURFACE REINFORCING PLAN

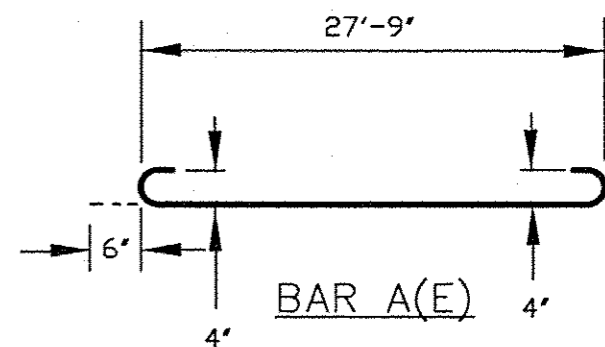


NOTE:

Formwork necessary for the wearing surface may be secured utilizing the bottom rail anchorage inserts and/or additional inserts cast into the beam.



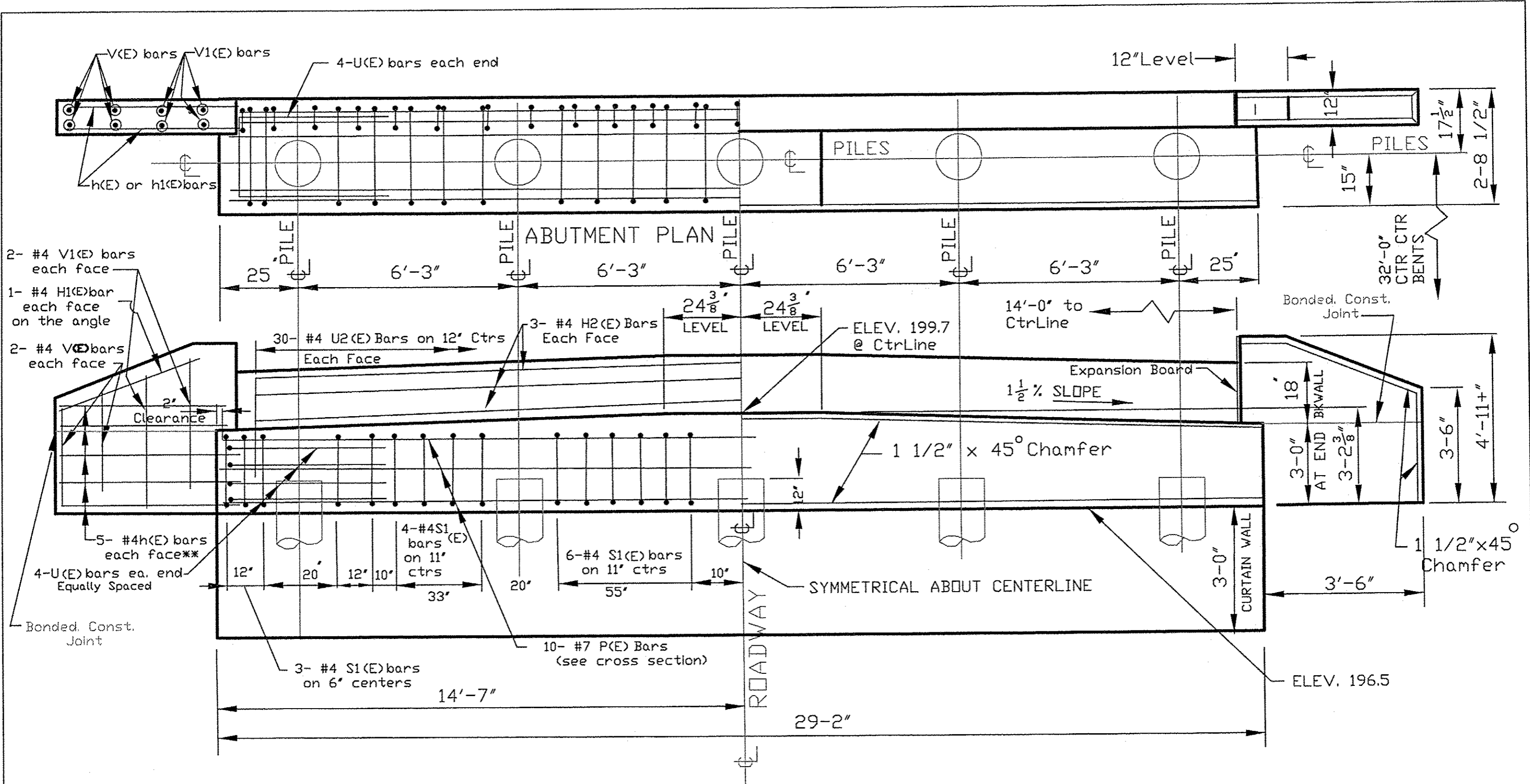
CROSS SECTION



\* (E) BARS & DOWEL RODS SHALL BE EPOXY COATED TO AASHTO M 284.

IMBEDDED IN EXTERIOR PCC BEAM

SUPERSTRUCTURE				
F.A.S. RTE.	SECTION	COUNTY	TOTAL SHEETS	SHEET NO.
0195	11-00314-00-BR	LEE	15	7
LEE COUNTY HW DEP'T.		CONTRACT NO. 85583		
		ILLINOIS FED. AID PROJECT BRS-0195(106)		



\*\* two in each face in the upper pour and 1 each face of the H1(E) bars

**ABUTMENT ELEVATION**

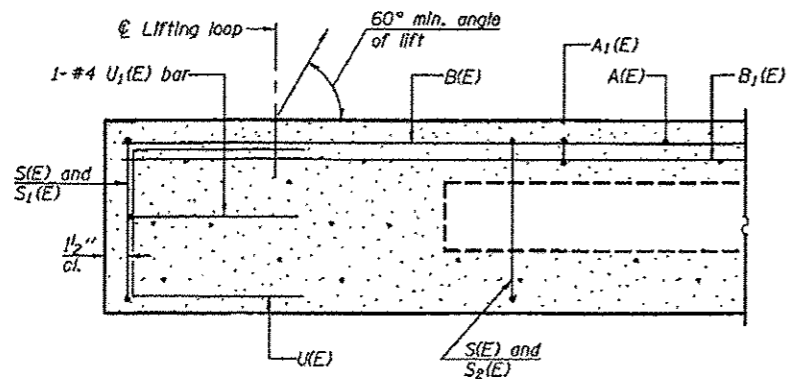
CURTAIN WALL REINFORCING NOT SHOWN, SEE CROSS SECTION

The backwall shall be cast against the in-place beams.

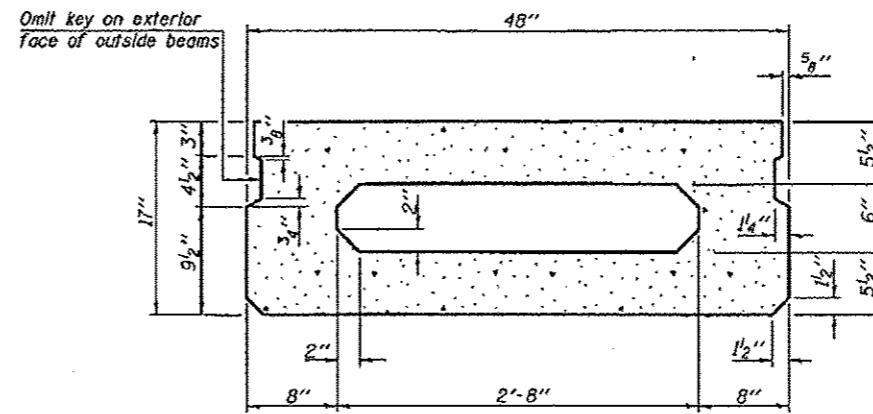
ABUTMENT ELEVATION & REINFORCEMENT

F.A.S. RTE.	SECTION	COUNTY	TOTAL SHEETS	SHEET NO.
0195	11-00314-00-BR	LEE	15	8
LEE COUNTY HW DEP'T.		CONTRACT NO. 85583		
ILLINOIS FED. AID PROJECT BRS-0195(106)				

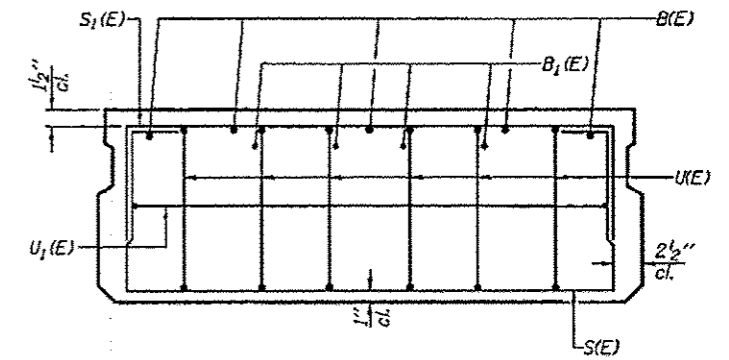




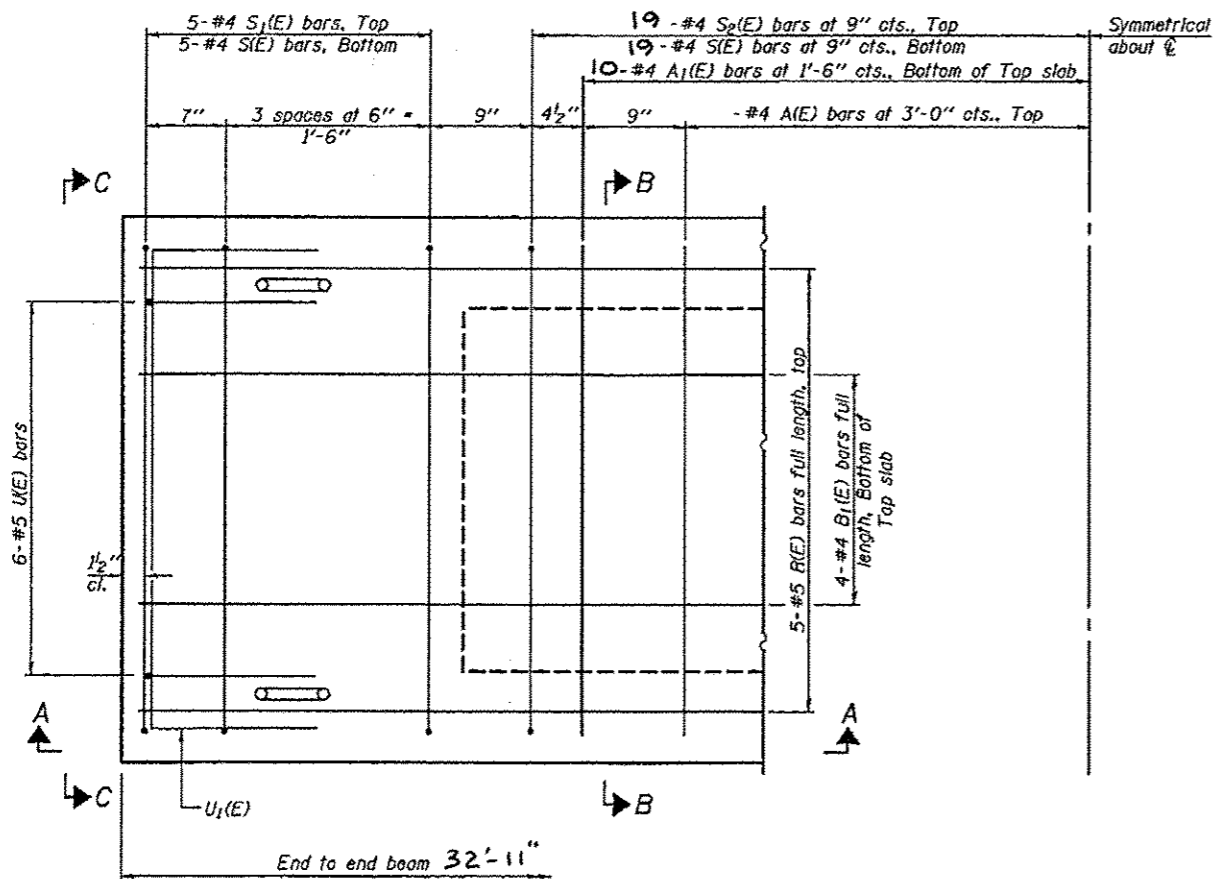
SECTION A-A



SECTION B-B  
(Showing dimensions)

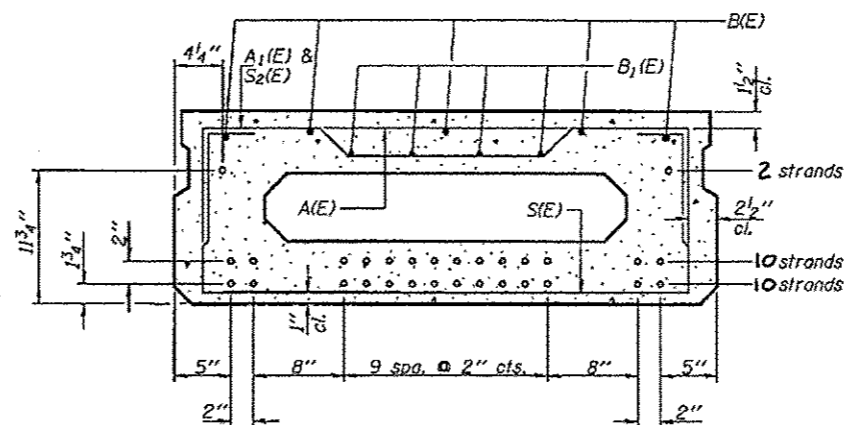


VIEW C-C



PLAN VIEW

Note: Spacing of S(E) and S2(E) bars may be adjusted up to 4" in the immediate area of the transverse tie diaphragms to miss the block outs for the transverse ties.



SECTION B-B

(Showing reinforcement and permissible strand locations)

Note: Place the number of strands specified in each row symmetrically about the centerline of beam in the permissible strand locations shown.

BAR LIST  
ONE BEAM ONLY  
(For information only)

Bar	No.	Size	Length	Shape
A(E)	12	#4	3'-7"	—
A1(E)	20	#4	3'-10"	—
B(E)	5	#5	32'-8"	—
B1(E)	4	#4	32'-8"	—
S(E)	48	#4	6'-9"	□
S1(E)	10	#4	5'-3"	□
S2(E)	38	#4	5'-6"	□
U(E)	12	#5	3'-8"	□
U1(E)	2	#4	6'-0"	□

MINIMUM BAR LAP

#4 bar = 2'-0"  
#5 bar = 2'-6"

PD-1748-0

7-1-10

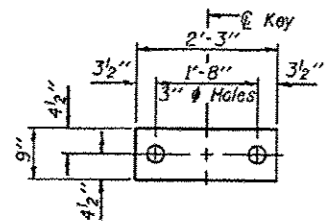
FILE NAME *	USER NAME *	DESIGNED -	REVISED -
		CHECKED -	REVISED -
PLOT SCALE *		DRAWN -	REVISED -
PLOT DATE *		CHECKED -	REVISED -

STATE OF ILLINOIS  
DEPARTMENT OF TRANSPORTATION

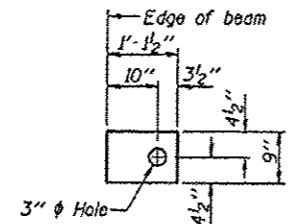
17" x 48" PPC DECK BEAM  
STRUCTURE NO. 052-3371

SHEET NO. OF SHEETS

F.A. RTE.	SECTION	COUNTY	TOTAL SHEETS	SHEET NO.
195	11-00214-00-BR	LEE	15	9
			CONTRACT NO. 25583	
ILLINOIS FED. AID PROJECT				



FABRIC BEARING PAD  
(Interior)

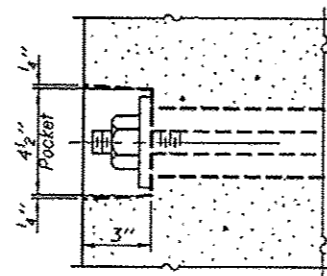


FABRIC BEARING PAD  
(Exterior)

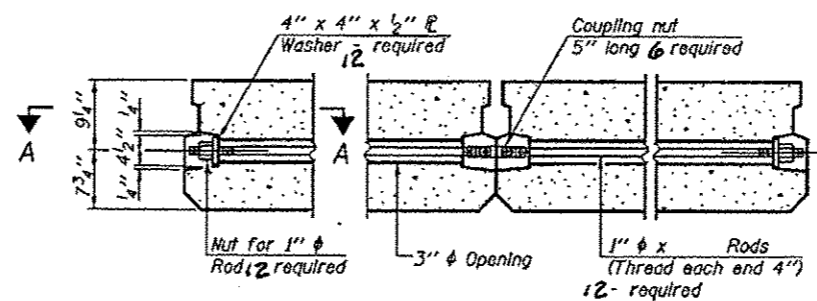
FIXED

Notes:

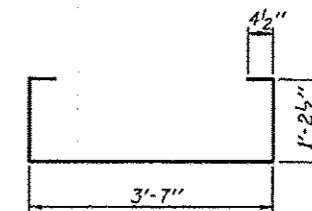
All bearing pads shall be 1" thick.  
Omit holes when using expansion bearings.  
Expansion bearing pad shall be bonded to the substructure.



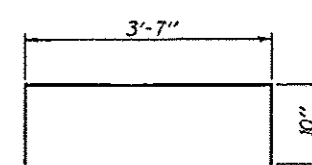
SECTION A-A



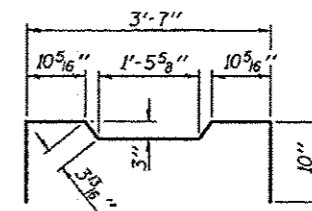
TYPICAL TRANSVERSE TIE ASSEMBLY



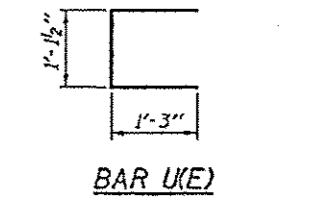
BAR S(E)



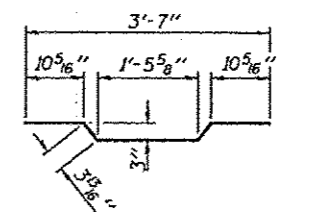
BAR S1(E)



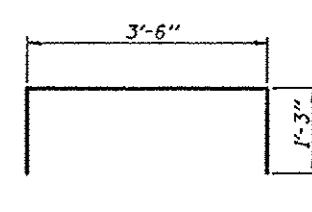
BAR S2(E)



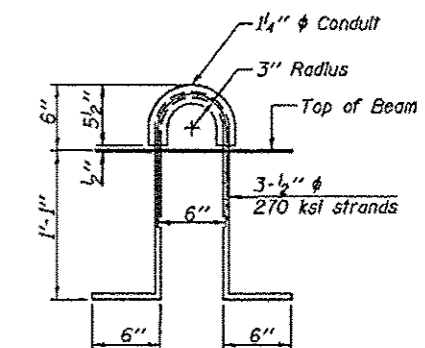
BAR U(E)



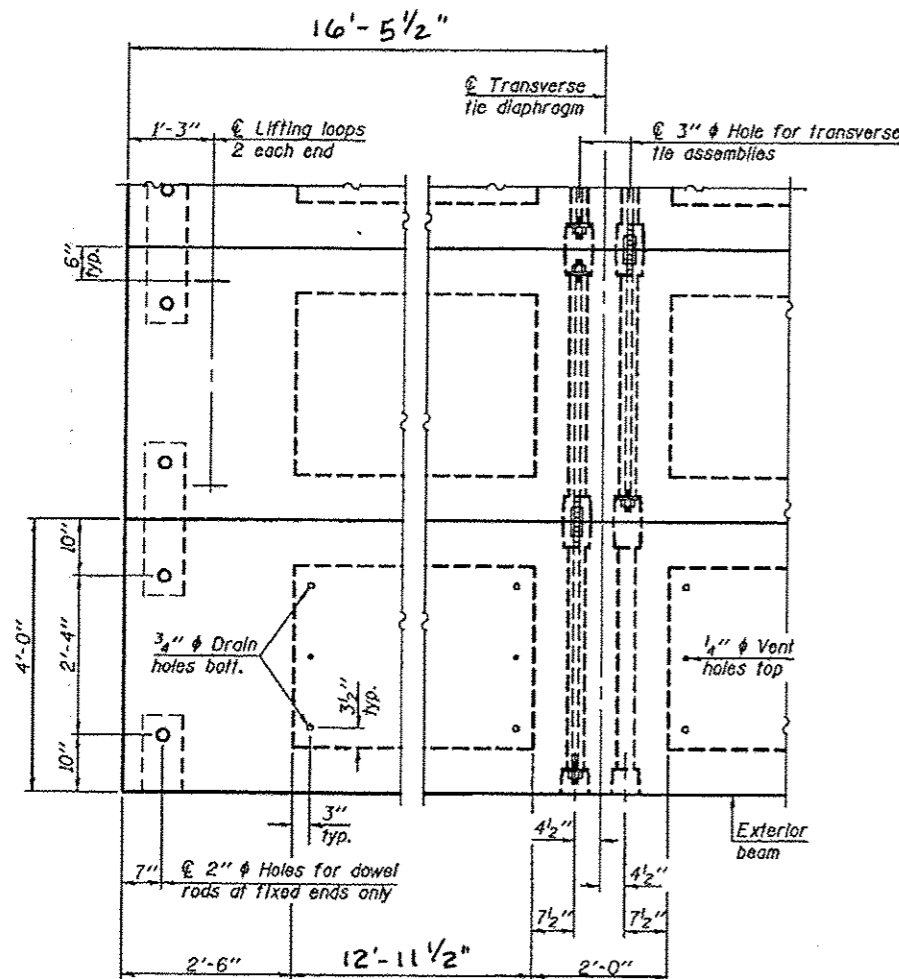
BAR A1(E)



BAR U1(E)



LIFTING LOOP DETAIL



PLAN VIEW

Note: Connect beams in pairs with the transverse tie configuration shown.

NOTES

Prestressing steel shall be uncoated high strength, low relaxation 7-wire strand, Grade 270. The nominal diameter shall be 1/2" and the nominal cross-sectional area shall be 0.153 sq. in. The 1" rods in the transverse tie assembly shall be tightened to a snug fit and the threads set. Pockets on exterior faces of bridge shall be filled with grout after transverse tie assembly is in place. Reinforcement bars shall conform to ASTM A 706, Grade 60. (See Special Provisions). Two 1/8" fabric adjusting shims of the dimensions of the exterior bearing pad shall be provided for each bearing pad location. A minimum 2 1/2" lifting pin shall be used to engage the lifting loops during handling. Corrosion Inhibitor, per Article 1020.05(b)(12) and 1021.06 of the Standard Specifications, shall be used in the concrete for precast prestressed concrete deck beams. Compressive strength of prestressed concrete, f'c, shall be 6000 psi. Compressive strength of prestressed concrete at release, f'cl, shall be 5000 psi.

BILL OF MATERIAL

Precast Prestressed Conc. Deck Bms. (17" depth)	Sq. Ft.	922
---	---------	-----

PD-1748-0D

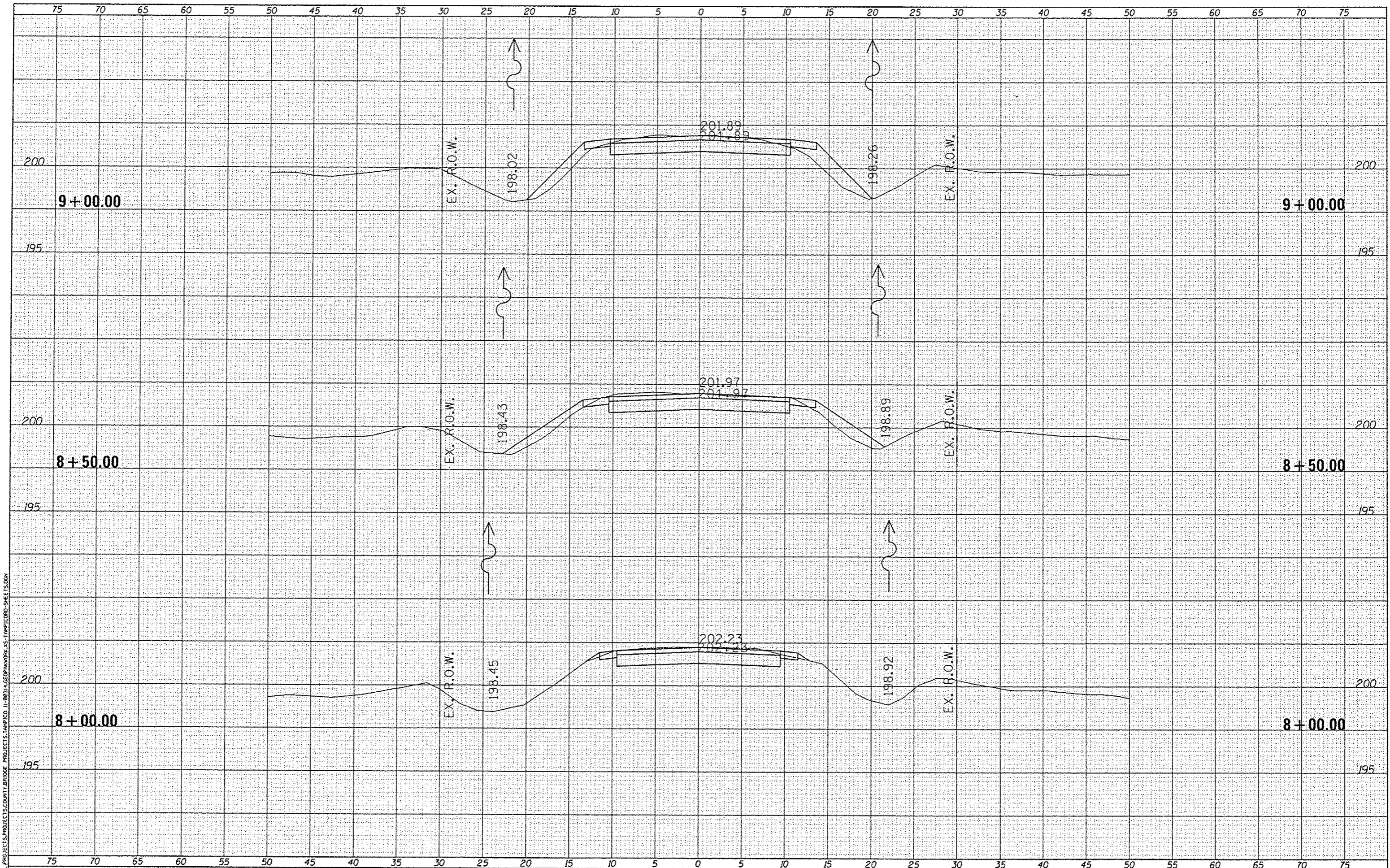
7-1-10

FILE NAME	USER NAME	DESIGNED	REVISED
		CHECKED	REVISED
		DRAWN	REVISED
		CHECKED	REVISED

STATE OF ILLINOIS  
DEPARTMENT OF TRANSPORTATION

17" x 48" PPC DECK BEAM DETAILS  
STRUCTURE NO. 052-3371

P.A. RTE.	SECTION	COUNTY	TOTAL SHEETS	SHEET NO.
195	11-00314-00-BR	LEE	15	10
ILLINOIS			CONTRACT NO. 85583	



FILE NAME: L:\PROJECTS\PROJECTS\COUNTY BRIDGE PROJECTS\TAMPICO 11-00314-00\WORK\AS-TAMPICRD-SHEETS.DGN

DESIGNED -	REVISED -
DRAWN -	REVISED -
CHECKED -	REVISED -
DATE -	REVISED -

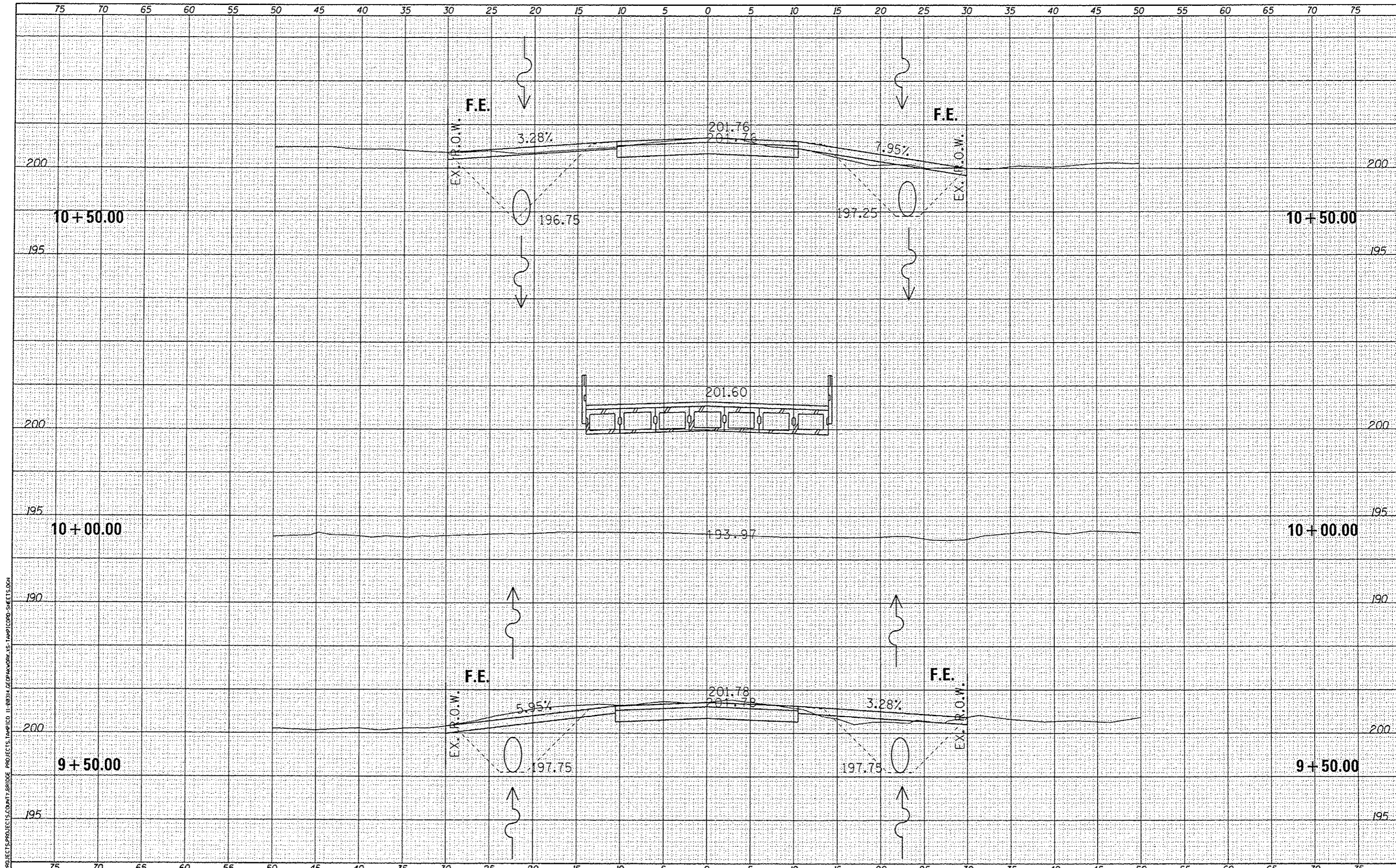
STATE OF ILLINOIS  
COUNTY OF LEE

**TAMPICO ROAD BRIDGE  
CROSS SECTION SHEETS**

SCALE: 5 SCALE SHEET 1 OF 3 SHEETS STA. 8+00.00 TO STA. 9+00.00

F.A.S. RTE.	SECTION	COUNTY	TOTAL SHEETS	SHEET NO.
195	11-00314-00-BR	LEE	15	11
TAMPICO ROAD BRIDGE		CONTRACT NO.		

ILLINOIS FED. AID PROJECT



FILE NAME: L:\PROJECTS\PROJECTS\COUNTY BRIDGE PROJECTS\TAMPICO\_11-00314\BRIDGE\WORK\15-TAMPICO-RD-SHEETS.DWG

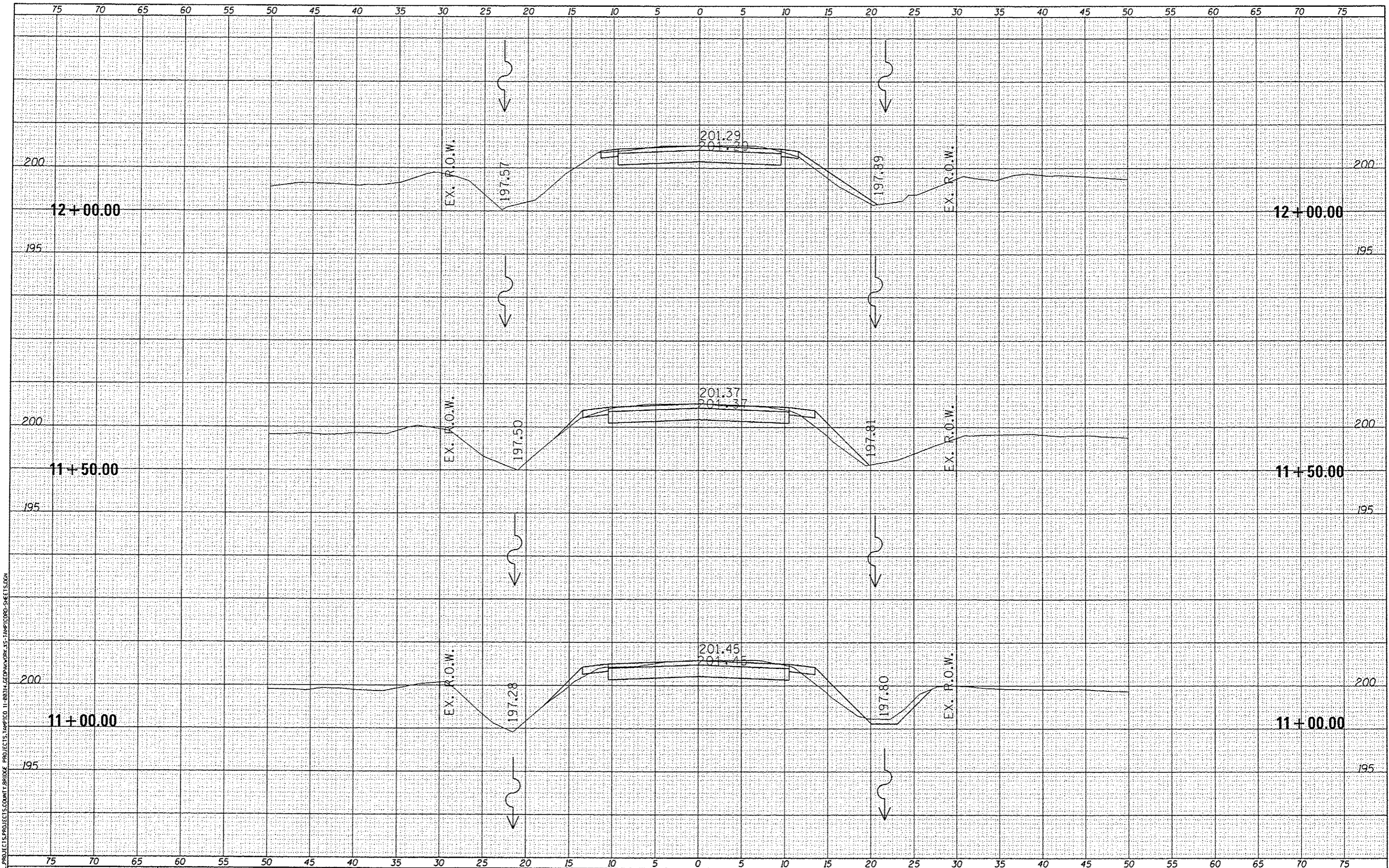
DESIGNED -	REVISED -
DRAWN -	REVISED -
CHECKED -	REVISED -
DATE -	REVISED -

STATE OF ILLINOIS  
COUNTY OF LEE

**TAMPICO ROAD BRIDGE  
CROSS SECTION SHEETS**

SCALE: 5 SCALE SHEET 1 OF 3 SHEETS STA. 9+50.00 TO STA. 10+50.00

F.A.S. RTE.	SECTION	COUNTY	TOTAL SHEETS	SHEET NO.
195	11-00314-00-BR	LEE	15	12
TAMPICO ROAD BRIDGE			CONTRACT NO.	
ILLINOIS FED. AID PROJECT				



FILE NAME = L:\PROJECTS\PROJECTS\COUNTY BRIDGE PROJECTS\TAMPICO 11-80314-00\DRAWING\11-TAMPICO RD-SHEETS.DGN

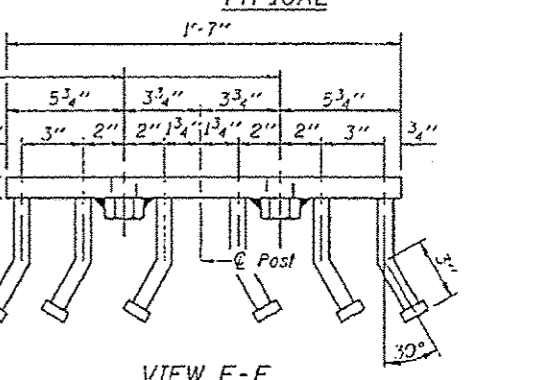
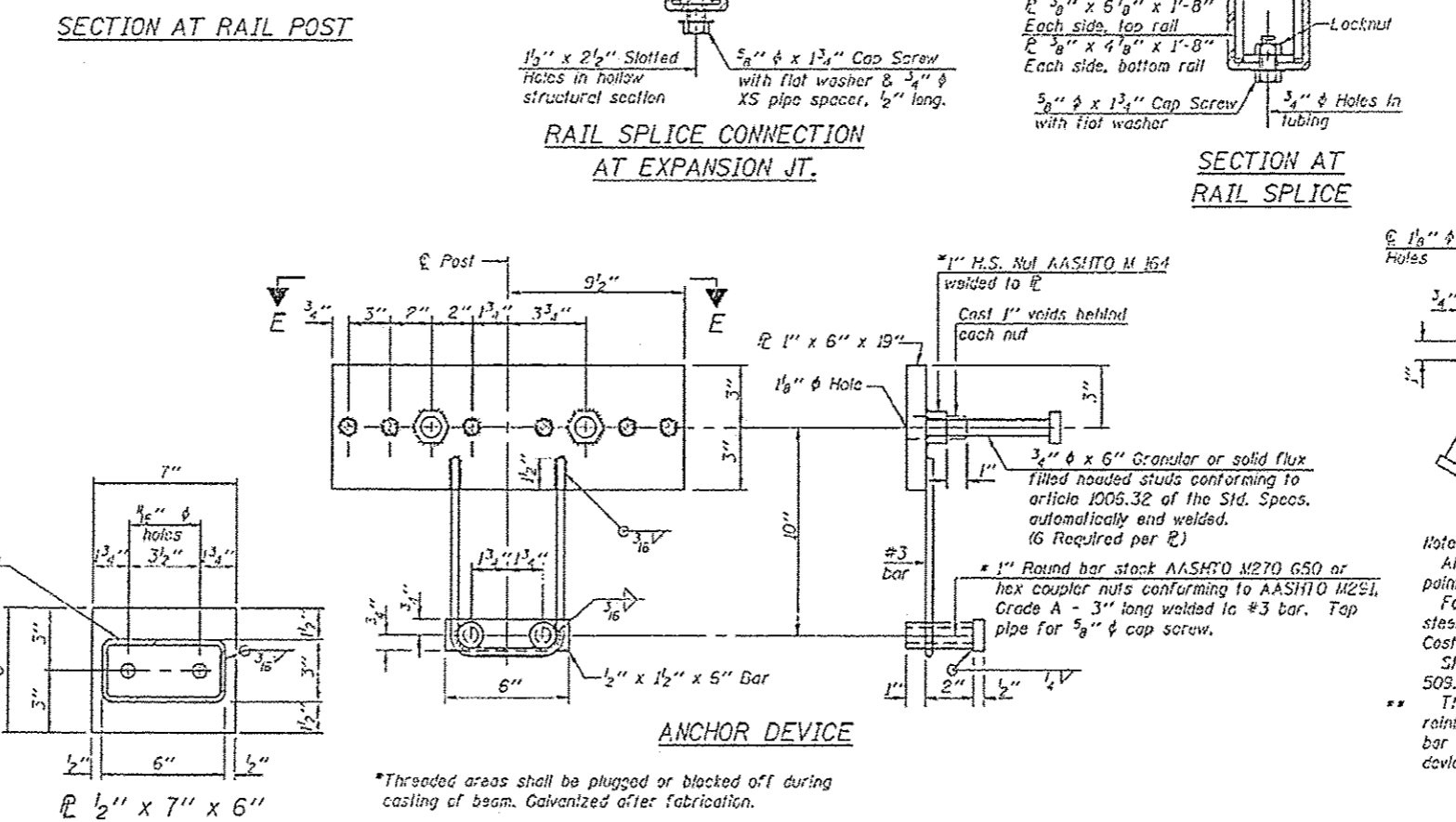
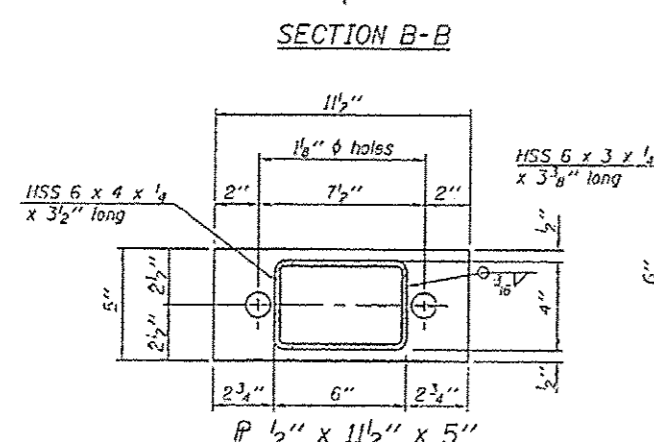
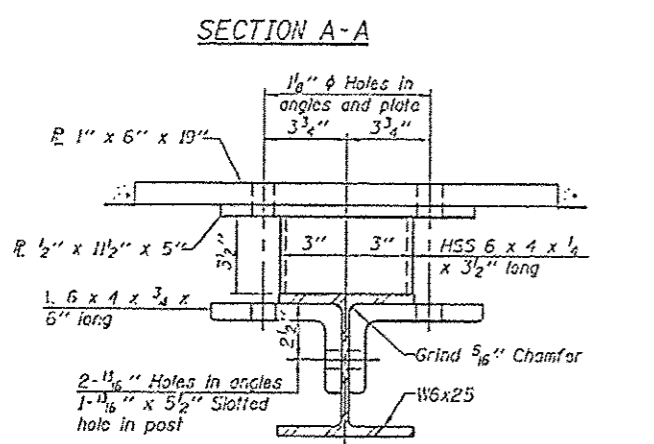
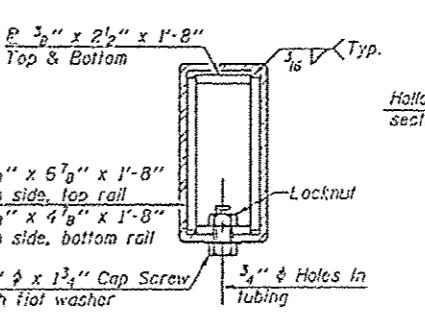
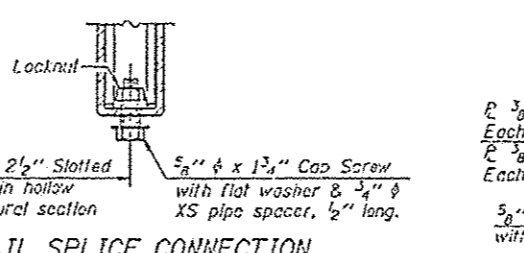
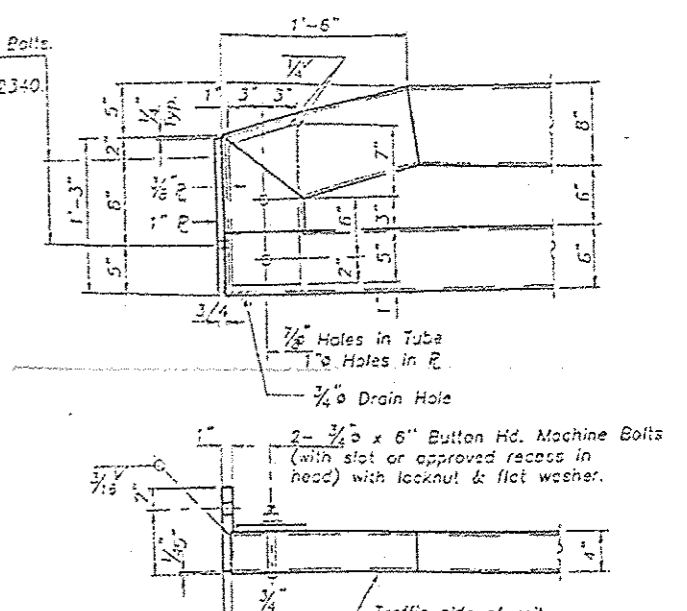
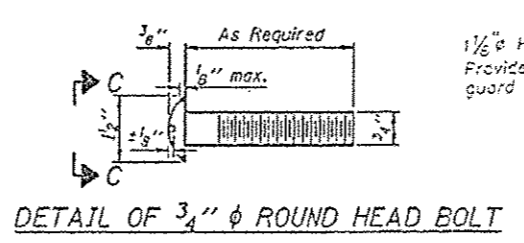
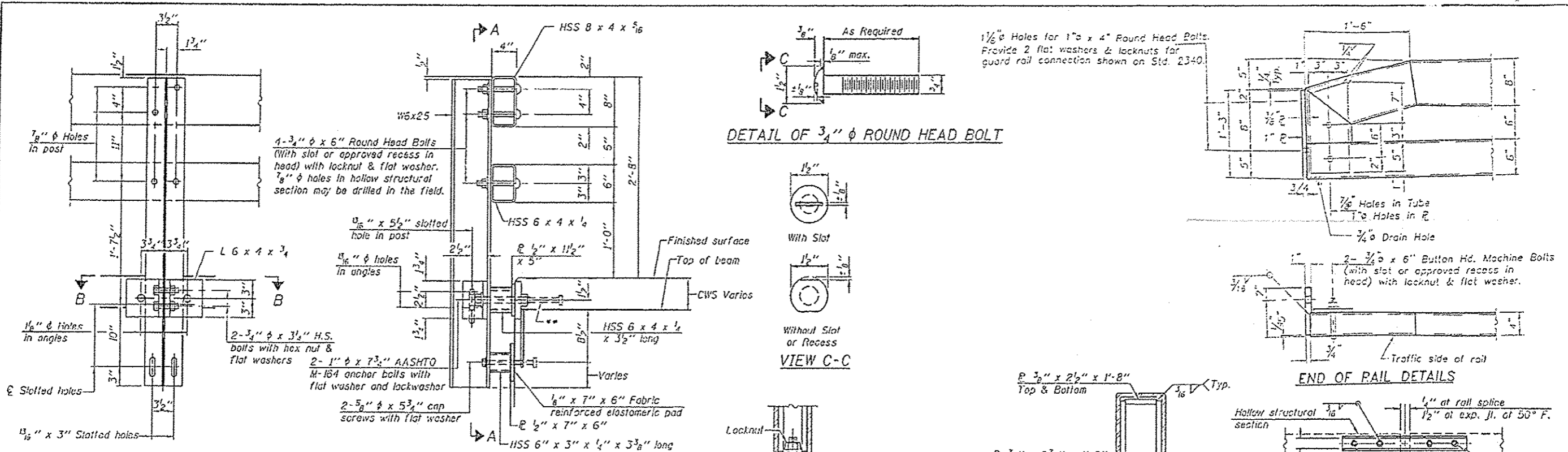
DESIGNED -	REVISED -
DRAWN -	REVISED -
CHECKED -	REVISED -
DATE -	REVISED -

STATE OF ILLINOIS  
COUNTY OF LEE

TAMPICO ROAD BRIDGE  
CROSS SECTION SHEETS

SCALE: 5 SCALE SHEET 1 OF 3 SHEETS STA. 11+00.00 TO STA. 12+00.00

F.A.S. RTE.	SECTION	COUNTY	TOTAL SHEETS	SHEET NO.
195	11-00314-00-BR	LEE	15	13
TAMPICO ROAD BRIDGE			CONTRACT NO.	
ILLINOIS FED. AID PROJECT				



**Notes:**  
 All field drilled holes shall be coated with an approved zinc rich paint before erection.  
 For multi-span bridges, sufficient 1/2" x 6" x 1'-2" galvanized steel shims shall be provided to align rail between adjacent spans. Cost included with Steel Rolling, Type SM.  
 Steel rail elements shall be galvanized according to Article 509.05 of the Standard Specifications.  
 The studs of the anchor devices shall be placed below the top reinforcement bars and the outermost longitudinal reinforcement bar shall be placed directly above the studs of the rail post anchor device.

**BILL OF MATERIAL**

Item	Unit	Quantity
Steel Railing, Type SM	Foot	70

