

GENERAL NOTES

Calculated weight of Structural Steel = 3,530 Pounds

No field welding is permitted except as specified in the contract documents.

The Contractor shall test the existing welds by non-destructive methods within 2 ft. of the end of the existing cover plates for cracks after removal of the existing concrete deck. Dye penetrant (PT), magnetic particle (MT), or other approved testing method shall be performed by qualified personnel approved by the Engineer. If cracks are found, report them to the Engineer for disposition. The cost of testing is included in Removal of Existing Concrete Deck. The cost of crack repair, if necessary, will be paid for according to Article 109.04 of the Standard Specifications.

Reinforcement bars shall conform to the requirements of ASTM A706 Grade 60.

Reinforcement bars designated (E) shall be epoxy coated.

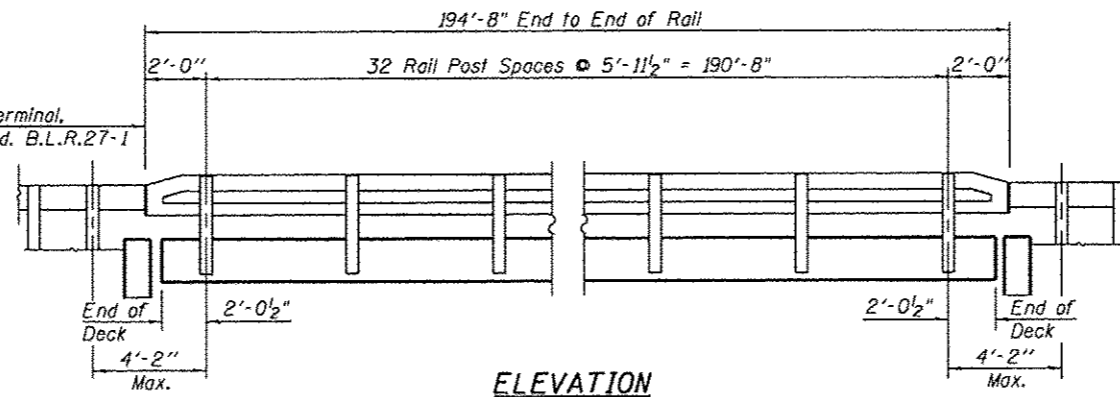
Prior to pouring the new concrete deck, all heavy or loose rust, loose mill scale, and other loose or potentially detrimental foreign material shall be removed from the surfaces in contact with concrete. Tightly adhered paint may remain unless otherwise noted. Removal shall be accomplished by methods that will not damage the steel and the cost will be included in the pay item covering removal of the existing concrete.

As directed by the Engineer, existing construction accessories welded to the top flange of beams shall be removed. The weld areas shall be ground flush and inspected for cracks using magnetic particle testing (MT) or dye penetrant testing (PT) by qualified personnel approved by the Engineer. Any cracks that can not be removed by grinding 1/4 in. deep shall be identified and reported to the Bureau of Bridges and Structures for further disposition. The cost of removing welded accessories, grinding and inspecting weld areas and grinding cracks will be paid for according to Article 109.04 of the Standard Specifications.

Plan dimensions and details relative to existing plans are subject to nominal construction variations. The Contractor shall field verify existing dimensions and details affecting new construction and make necessary approved adjustments prior to construction or ordering of materials. Such variations shall not be cause for additional compensation for a change in scope of the work, however, the Contractor will be paid for the quantity actually furnished at the unit price bid for the work.

The existing structural steel coating contains lead. The Contractor shall take appropriate precautions to deal with the presence of lead on this project.

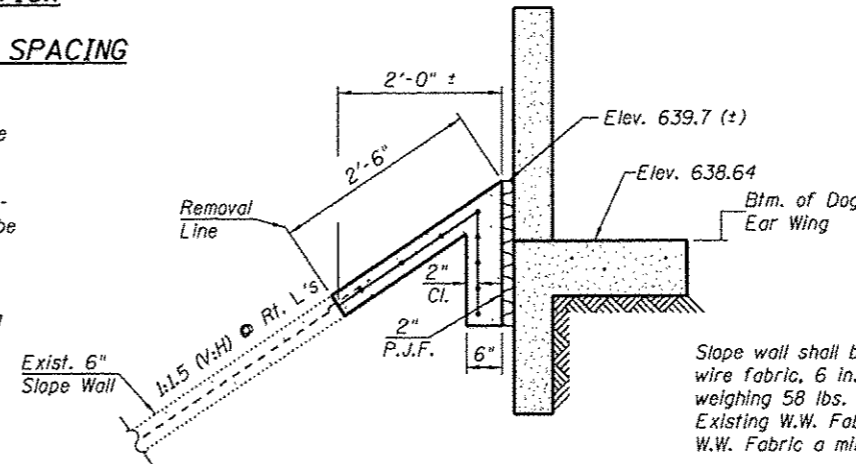
Traffic Barrier Terminal, Type 5A. See Std. B.L.R.27-1 (Typ.)



ELEVATION
RAIL POST SPACING

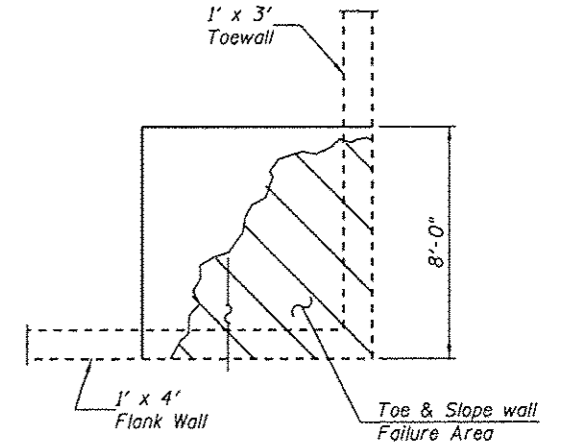
Cleaning and painting of the existing structural steel shall be as specified in the special provision for "Cleaning and Painting Existing Steel Structures". All existing steel shall be cleaned per Near White Blast Cleaning - SSPC-SP10. All existing steel shall be painted according to the requirements of Paint System 1 - OZ/E/U. The color of the final finish coat for all interior steel surfaces shall be Gray, Munsell No 5b 7/1. The color of the final finish coat for the exterior and bottom flange of the fascia beams shall be Gray (Munsell No. 5B 7/1).

A minimum of two (2) air monitor(s) will be required to monitor abrasive blasting operations at this site. See special provision for "Containment and Disposal of Lead Paint Cleaning Residues."

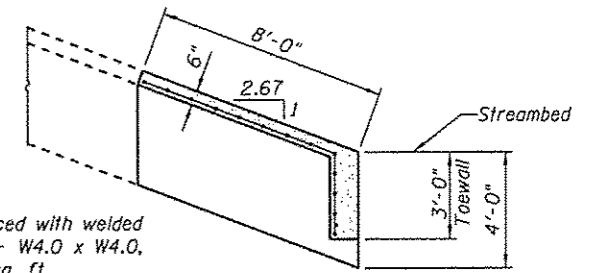


Note: Also replace removed anchor wall sections at North & South Ends.

SLOPE WALL REPAIR
• East Wings

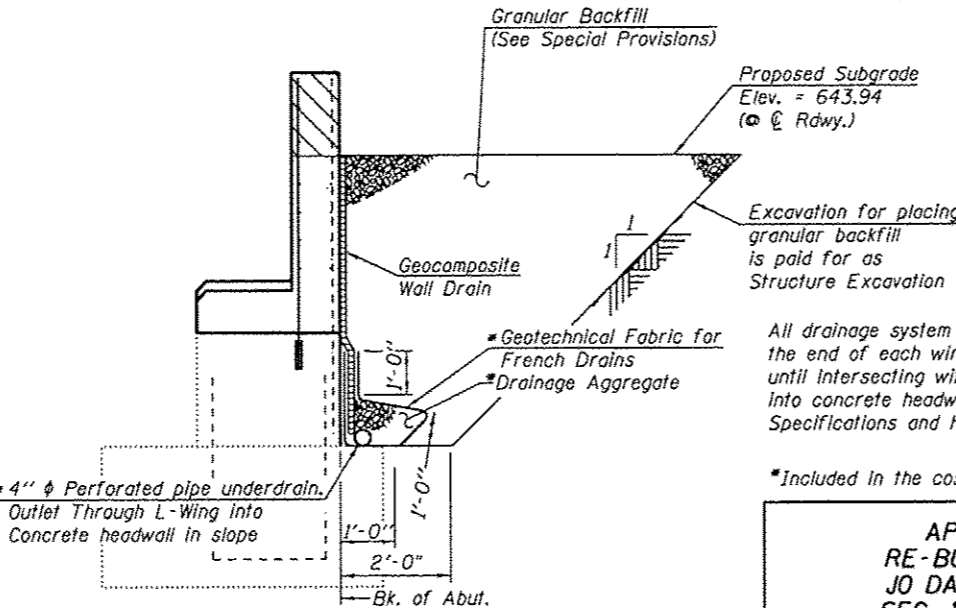


PLAN



ELEVATION

Slope wall shall be reinforced with welded wire fabric, 6 in. x 6 in. - W4.0 x W4.0, weighing 58 lbs. per 100 sq. ft. Existing W.W. Fabric shall lap with new W.W. Fabric a minimum of 6".



ABUTMENT DRAINAGE DETAIL
Section Thru. Abutment

All drainage system components shall extend to 2'-0" from the end of each wingwall except an outlet pipe shall extend until intersecting with the side slopes. The pipes shall drain into concrete headwalls. (See Article 601.05 of the Standard Specifications and Highway Standard 60110)

*Included in the cost of Pipe Underdrains for Structures.

APPLE RIVER
RE-BUILT 20__ BY
JO DAVIESS COUNTY
SEC. 11-00138-00-BR
F.A. PROJ. BHS-007(123)
STR. NO. 043-3008
LOADING HS-20

LETTERING FOR NAME PLATE

See Std. 515001

Existing Name Plate shall be cleaned and relocated next to new Name Plate. Cost included with Name Plates.

TOTAL BILL OF MATERIAL

ITEM	UNIT	SUPER	SUB	TOTAL
Granular Backfill for Structures	Cu. Yd.		54	54
Removal of Existing Concrete Deck	Each	1		1
Concrete Removal	Cu. Yd.		17.6	17.6
Concrete Superstructure	Cu. Yd.	162.7		162.7
Bridge Deck Grooving	Sq. Yd.	573		573
Protective Coat	Sq. Yd.	688		688
Elastomeric Bearing Assembly, Type I	Each	5		5
Elastomeric Bearing Assembly, Type II	Each	5		5
Furnishing and Erecting Structural Steel	Pound	3530		3530
Stud Shear Connectors	Each	2130		2130
Jack and Remove Existing Bearings	Each	10		10
Reinforcement Bars, Epoxy Coated	Pound	44950	3990	48940
Steel Bridge Rail, Type SM (Special)	Foot	390		390
Name Plates	Each		1	1
Anchor Bolts 3/4"	Each		20	20
Concrete Structures	Cu. Yd.		25.4	25.4
Cleaning and Painting Steel Bridge No. 1	L. Sum	1		1
Slope Wall 6"	Sq. Yd.		13	13
Controlled Low Strength Material	Cu. Yd.		65.4	65.4
Containment and Disposal of Lead Paint Cleaning Residues	L. Sum	1		1
Preformed Joint Strip Seal	Foot	57		57
Structural Repair of Concrete (Depth Equal To or Less Than 5in.)	Sq. Ft.		14.5	14.5
Pipe Underdrains for Structures 4"	Foot		89	89
Geocomposite Wall Drain	Sq. Yd.		42	42
Structure Excavation	Cu. Yd.		72	72
Concrete Sealer	Sq. Ft.		50	50