

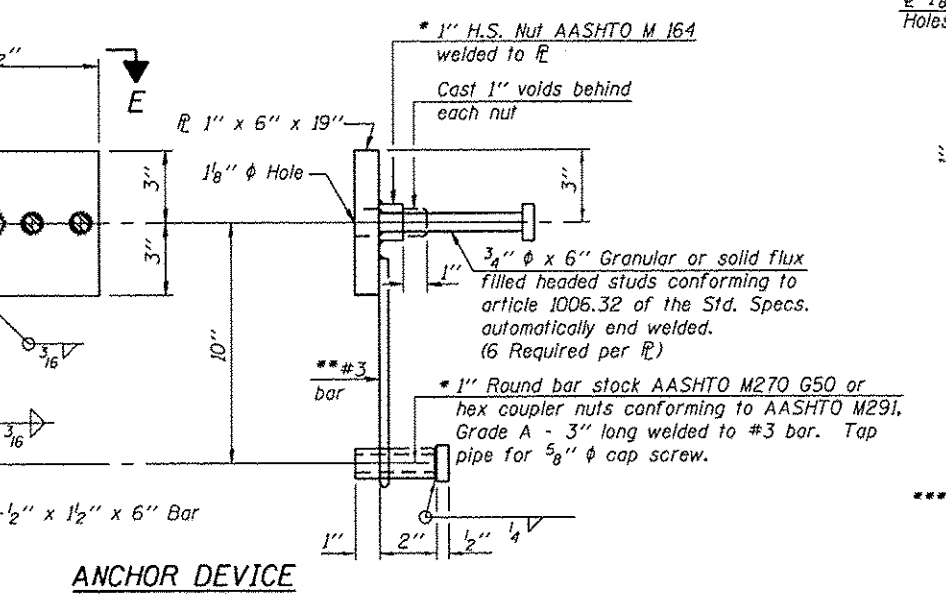
Notes:

All field drilled holes shall be coated with an approved zinc rich paint before erection.

All steel rail members shall be galvanized according to Article 509.05 of the Standard Specifications.

*** The studs of the anchor devices shall be placed below the top reinforcement bars and the outermost longitudinal reinforcement bar shall be placed directly above the studs of the rail post anchor device.

See sheet 2 of 25 for Rail Post Spacing.



ANCHOR DEVICE

1/2" x 7" x 6"

1/2" x 1 1/2" x 5"

1/2" x 7" x 6"

1/2" x 1 1/2" x 5"

*Threaded areas shall be plugged or blocked off during the placement of deck concrete. Galvanized after fabrication.

** Whenever the lower insert assemblies interfere with reinforcement bar locations, the #3 bars shall be cut and adjusted in order to allow raising or lowering of the lower inserts. Maximum adjustment not to exceed 1/2".

BILL OF MATERIAL

Item	Unit	Quantity
Steel Bridge Rail, Type SM (Special)	Foot	390

FILE NAME • 11-194.SM-RAIL.DGN
11-194.SM-RAIL.dgn

USER NAME • ashaw
DESIGNED - A.R.K.
CHECKED - S.F.M.
DRAWN - A.D.S.
CHECKED - A.R.K.

REVISIONS
REVISOR
DATE

7-1-10 (6'-3" Maximum Post Spacing)

FEHR GRAHAM
ENGINEERING & ENVIRONMENTAL
ILLINOIS DESIGN FIRM NO. 184-00325

FREEPORT, IL ROCKFORD, IL
ROCHELLE, IL SPRINGFIELD, IL
MONROE, WI

STEEL BRIDGE RAIL, TYPE SM (SPECIAL)
STRUCTURE NO. 043-3008

SHEET NO. 6 OF 25 SHEETS

C.H.	SECTION	COUNTY	TOTAL SHEETS	SHEET NO.
4	11-00138-00-BR	JODAVIESS	34	13

CONTRACT NO. 85585
ILLINOIS FED. AID PROJECT