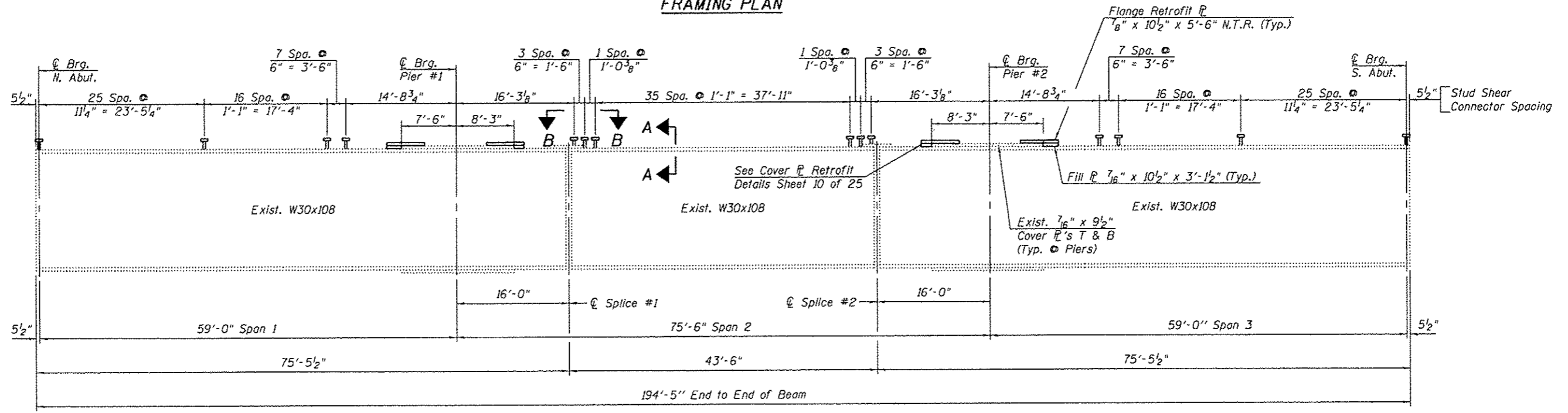
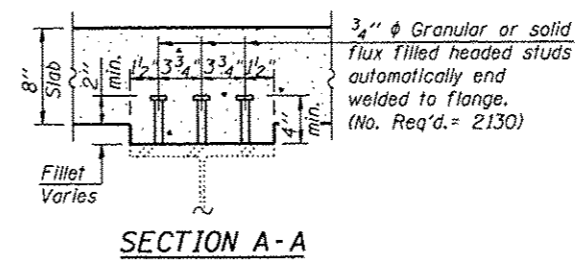


FRAMING PLAN



ELEVATION

Note: N.T.R. Indicates that Notch Toughness Requirements are applicable.



Note: See Sheet 10 of 25 for View B-B.
 Load carrying components designated "N.T.R." shall conform to the Supplemental Requirements for Notch Toughness, Zone 2.
 Individual diaphragms at supports may be temporarily disconnected to install bearing anchor rods.

FILE NAME * 11-194_STEEL.dgn	USER NAME * ashaw	DESIGNED - A.R.K.	REVISED -	FEHR GRAHAM ENGINEERING & ENVIRONMENTAL ILLINOIS DESIGN FIRM NO. 184-002925	FREEPORT, IL ROCKFORD, IL ROCHELLE, IL SPRINGFIELD, IL MONROE, VT	STRUCTURAL STEEL STRUCTURE NO. 043-3008 SHEET NO. 9 OF 25 SHEETS	C.H.	SECTION	COUNTY	TOTAL SHEETS	SHEET NO.
	PLOT SCALE * #SCALE#	CHECKED - A.L.S.	REVISED -				4	11-00138-00-BR	JODAVIESS	34	14
	PLOT DATE * 3/29/2013	DRAWN - A.D.S.	REVISED -				CONTRACT NO. 85585				
		CHECKED - A.R.K.	REVISED -				ILLINOIS FED. AID PROJECT				