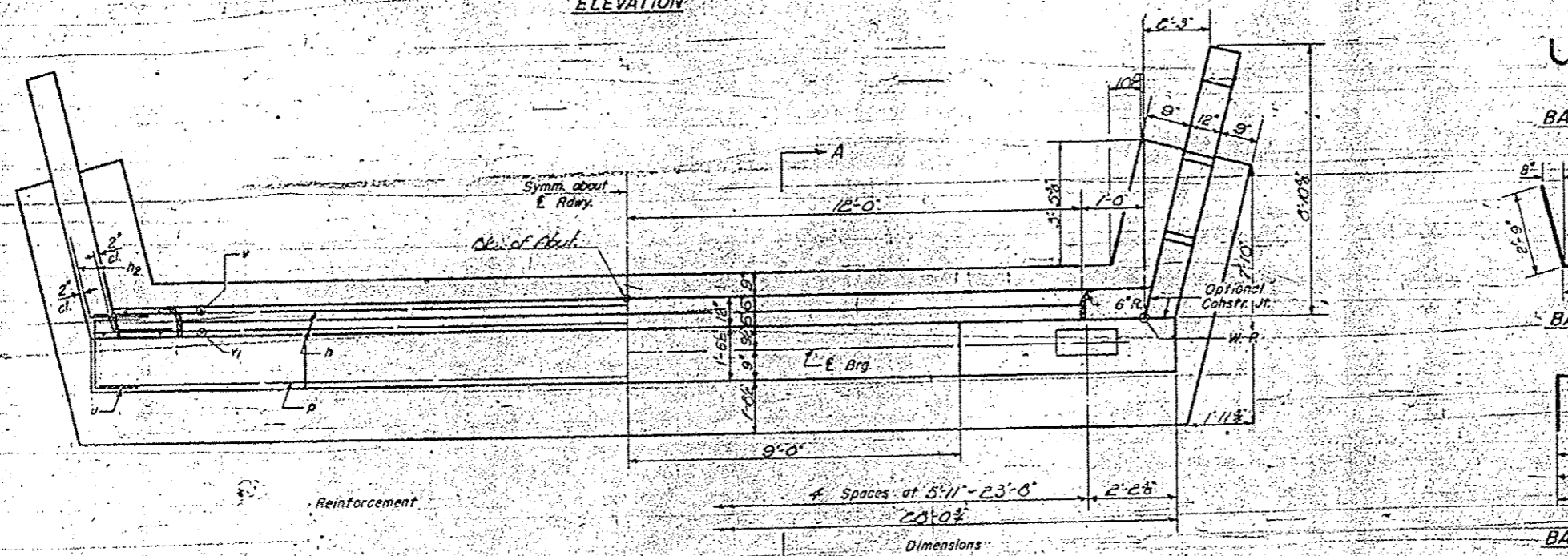


FOR
INFORMATION
ONLY



ABUTMENT BAR LIST

Bar	No.	Size	Length	Shape
h	14	#4	27'-9"	
h ₂	40	#5	3'-9"	L
n	56	#5	7'-7"	□
n ₁	40	#5	4'-0"	□
p	10	#7	27'-9"	
s	38	#4	5'-11"	□
t	52	#5	4'-9"	
t ₁	32	#5	2'-5"	
u	12	#5	5'-2"	□
v	48	#4	2'-6"	
v ₁	64	#4	5'-0"	
w	10	#5	27'-9"	
w ₁	8	#5	7'-6"	

ABUTMENT BILL OF MATERIAL

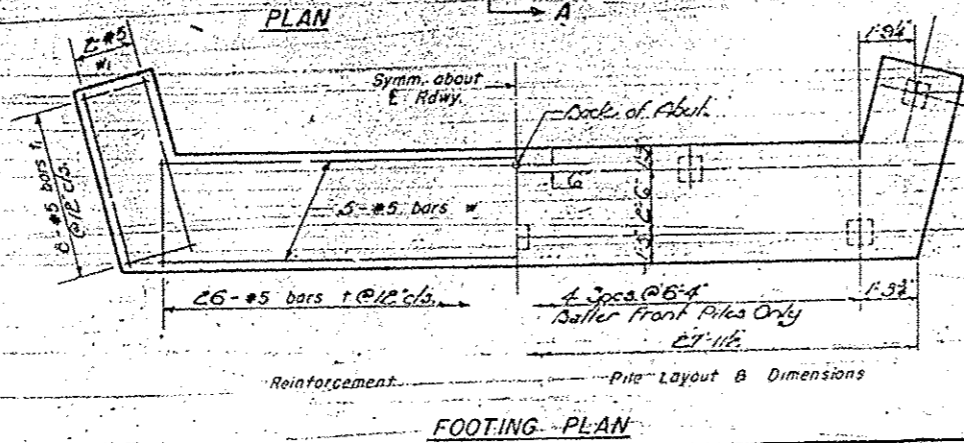
Item	Unit	Quantity
Class X Concrete	Cu. Yds.	57.3
Reinforcement Bars	Lbs.	5350
Concrete Piles	Lin. Ft.	585
Test Piles (Conc.)	Each	1

PILE DATA
Type - Concrete
Capacity - 27 Ton Min.
Est. Length - 45 Feet
No. Req'd - 12 (Including 1 Test Pile)

NOTE:
Piles in the North and South Abutments shall be driven in holes precast through the embankment to the natural ground line, in accordance with Article 60.9(c) of the Standard Specifications.

ABUTMENTS
APPLE RIVER BRIDGE
I.A.S.R.T. 71 - SEC. 76-15
JO DAVIES COUNTY
STA. 109 + 75

DESIGNED: Q.H. Hyman
CHECKED: W.L. Jacobs
DRAWN: W.A. Sausaman
MAY 12 1961
EXAMINED: W.E. Brannan
PASSED: [Signature]
APPROVED: [Signature]



7 Drawn 1-27-60