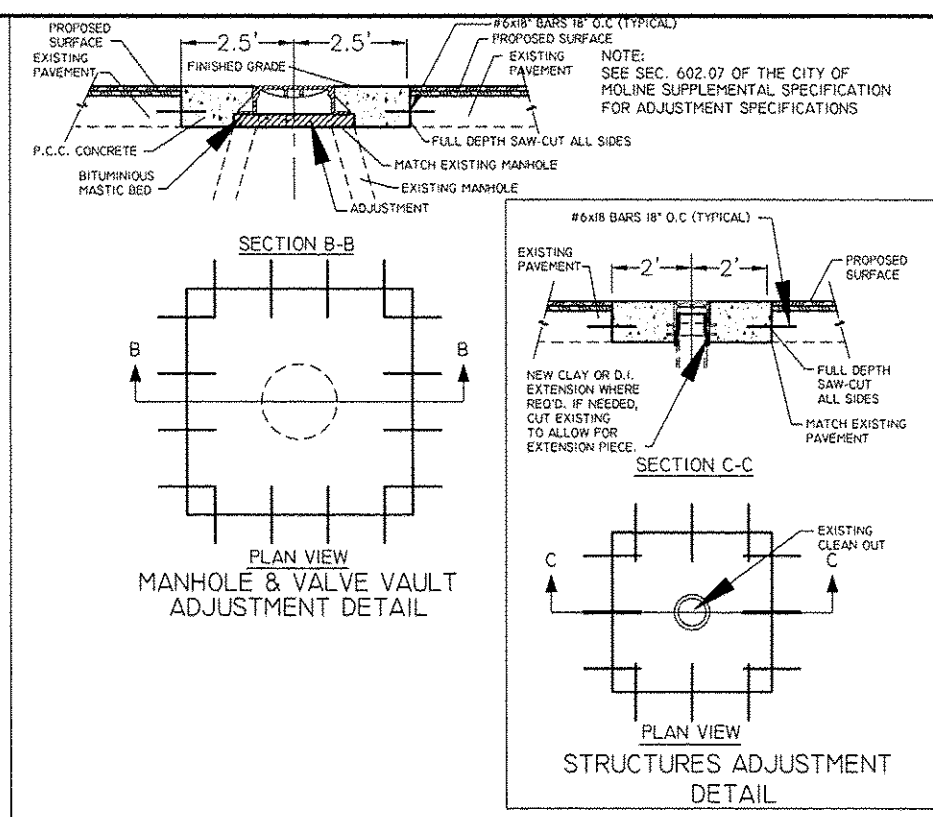


MANHOLE & VALVE VAULT BOX-OUT DETAIL

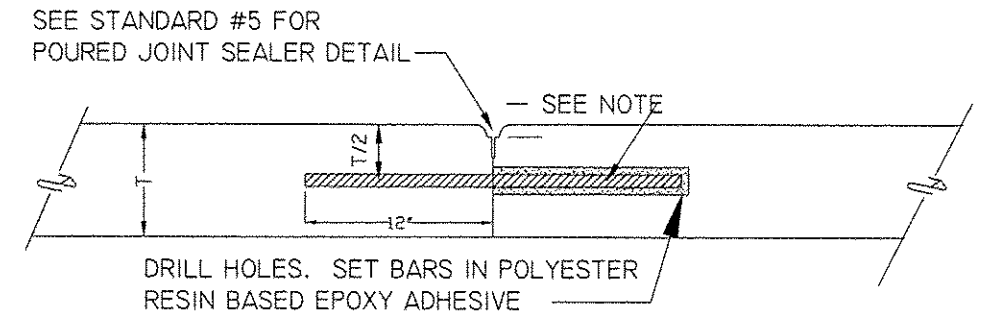
NOTE:
ALL BOXOUTS SHALL BE TIED TO THE MAINLINE PAVEMENT WITH #6 X 18" BARS @ 18" O.C ALL SIDES.
ALL REINFORCING BARS SHALL BE EPOXY COATED.
THIS WORK SHALL MEET THE REQUIREMENTS ARTICLE 442.02 NOTE #1 & ARTICLE 701.17(E)(2)&(3)

MANHOLE & VALVE VAULT BOX OUT DETAIL		
DATE	CITY OF MOLINE STANDARD	#3
12/11		



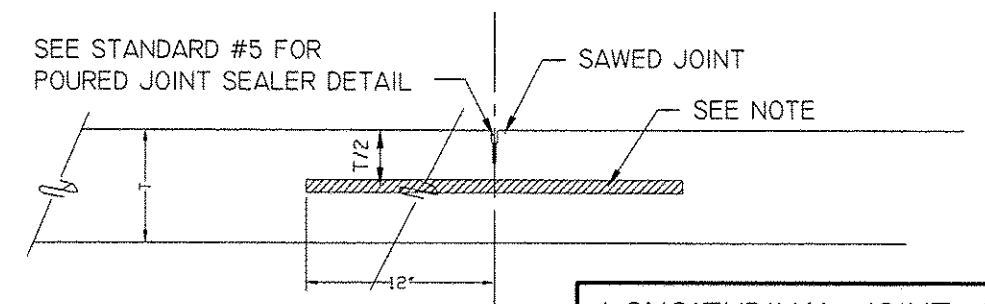
NOTE:
ALL REINFORCING BARS SHALL BE EPOXY COATED
THIS WORK SHALL MEET THE REQUIREMENTS OF ARTICLE 442.02 NOTE #1 & ARTICLE 701.17(E)(2)&(3)

TYPICAL ADJUSTMENT DETAIL		
DATE	CITY OF MOLINE STANDARD	#13
10/11		



BARS SHALL BE EPOXY COATED;
#6 DEFORMED, 24" LG. AT 24" CTRS. FOR LONG CONST. JT.
#6 DEFORMED, 24" LG. AT 18" CTRS. FOR TRANS. CONST. JT.

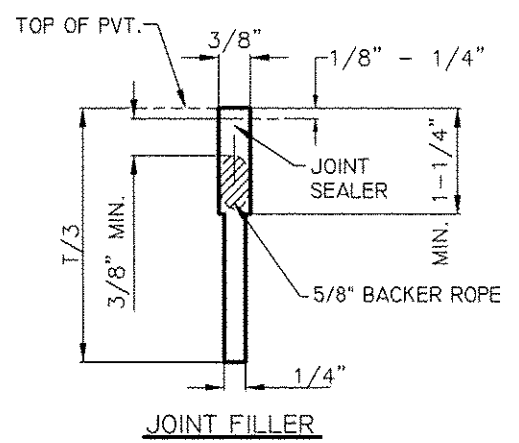
CONSTRUCTION JOINT



BARS SHALL BE EPOXY COATED;
#6 DEFORMED 24" LG. AT 24" CTRS.

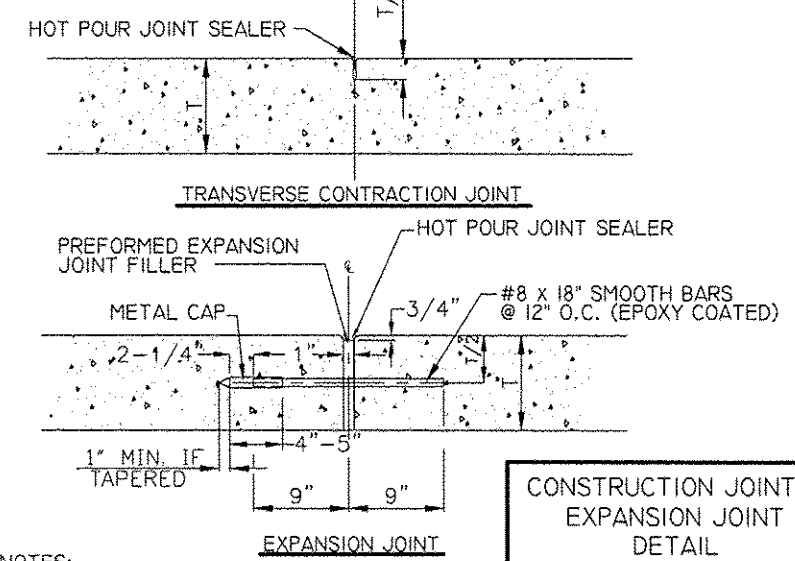
SAWED LONGITUDINAL CONTRACTION JOINT

LONGITUDINAL JOINT & TRANSVERSE JOINT DETAIL		
DATE	CITY OF MOLINE STANDARD	#7
10/11		



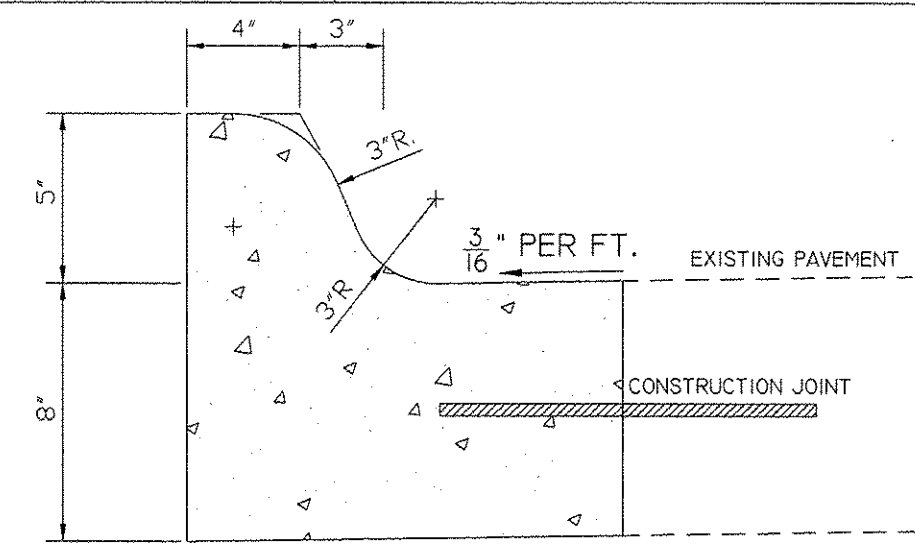
JOINT FILLER

- AFTER SAWING, FLUSH JOINT WITH WATER OR AIR.
- CLEAN BY SAND BLASTING UNTIL SURFACES ARE FREE OF SAWCUTTING FINES
- JUST PRIOR TO INSTALLATION OF BACKER ROPE, BLOW WITH OIL AND WATER FREE COMPRESSED AIR TO ELIMINATE SAND AND WATER.

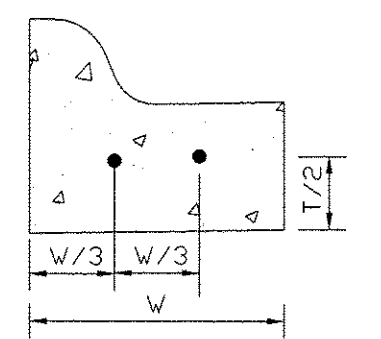


CONSTRUCTION JOINT & EXPANSION JOINT DETAIL		
DATE	CITY OF MOLINE STANDARD	#5
12/05		

NOTES:
HOLES SHALL BE DRILLED IN PREFORMED EXPANSION JOINT FILLER.
NO SLOTS OR GAPS WILL BE ALLOWED.
DOWEL BARS SHALL BE GREASED TO THE SATISFACTION OF THE ENGINEER.



COMBINATION CURB & GUTTER, B6.18 (MODIFIED)



CURB CONSTRUCTION JOINT

#6 x 24" EPOXY COATED DEFORMED BARS DRILLED & EPOXIED 9" INTO EXISTING CURB.

NOTE:
A MINIMUM OF 6" BASE OF CA-6 EXTENDING 1' BEHIND THE BACK OF CURB SHALL BE INCLUDED

CITY OF MOLINE
DEPARTMENT OF PUBLIC WORKS - ENGINEERING DIVISION
3635 4TH AVENUE, MOLINE, IL 61265
(309) 524-2350
CITY ENGINEER - SCOTT HINTON, P.E.

12TH AVENUE OVERLAY
19TH STREET TO 34TH STREET
DETAILS

3-21-13	IDOT COMMENTS
Date	Revision

Date	2-20-12	Sheet	39
Scale	NTS	of	40
Design Engineer	JWC	Project	MFT 254